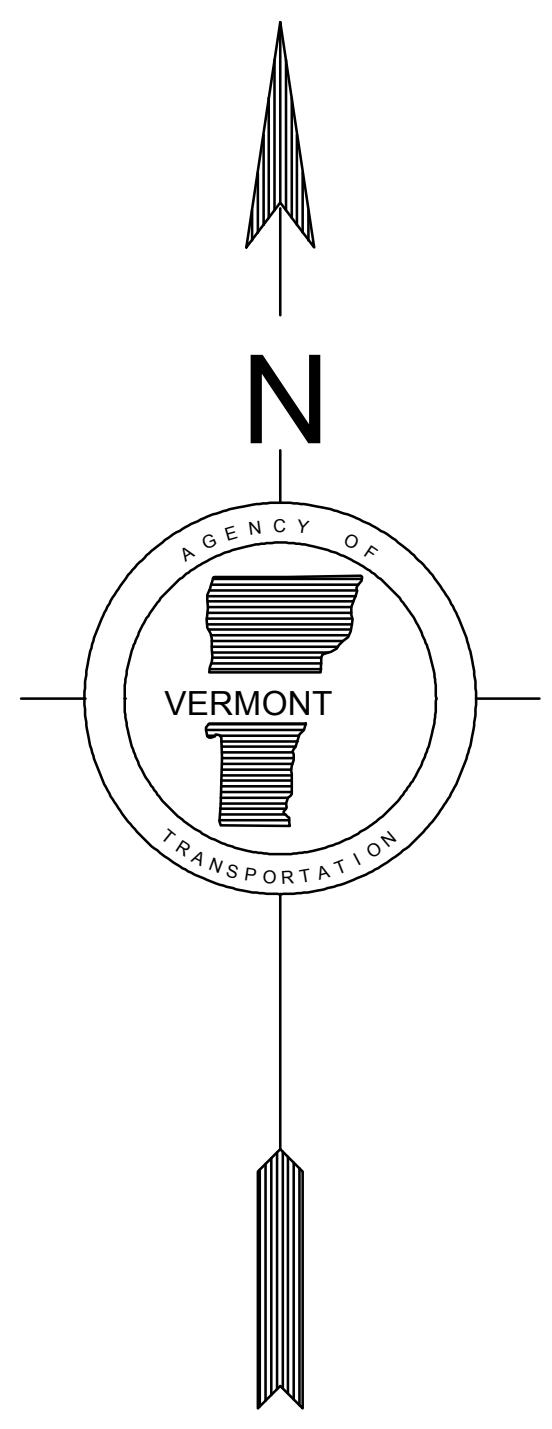
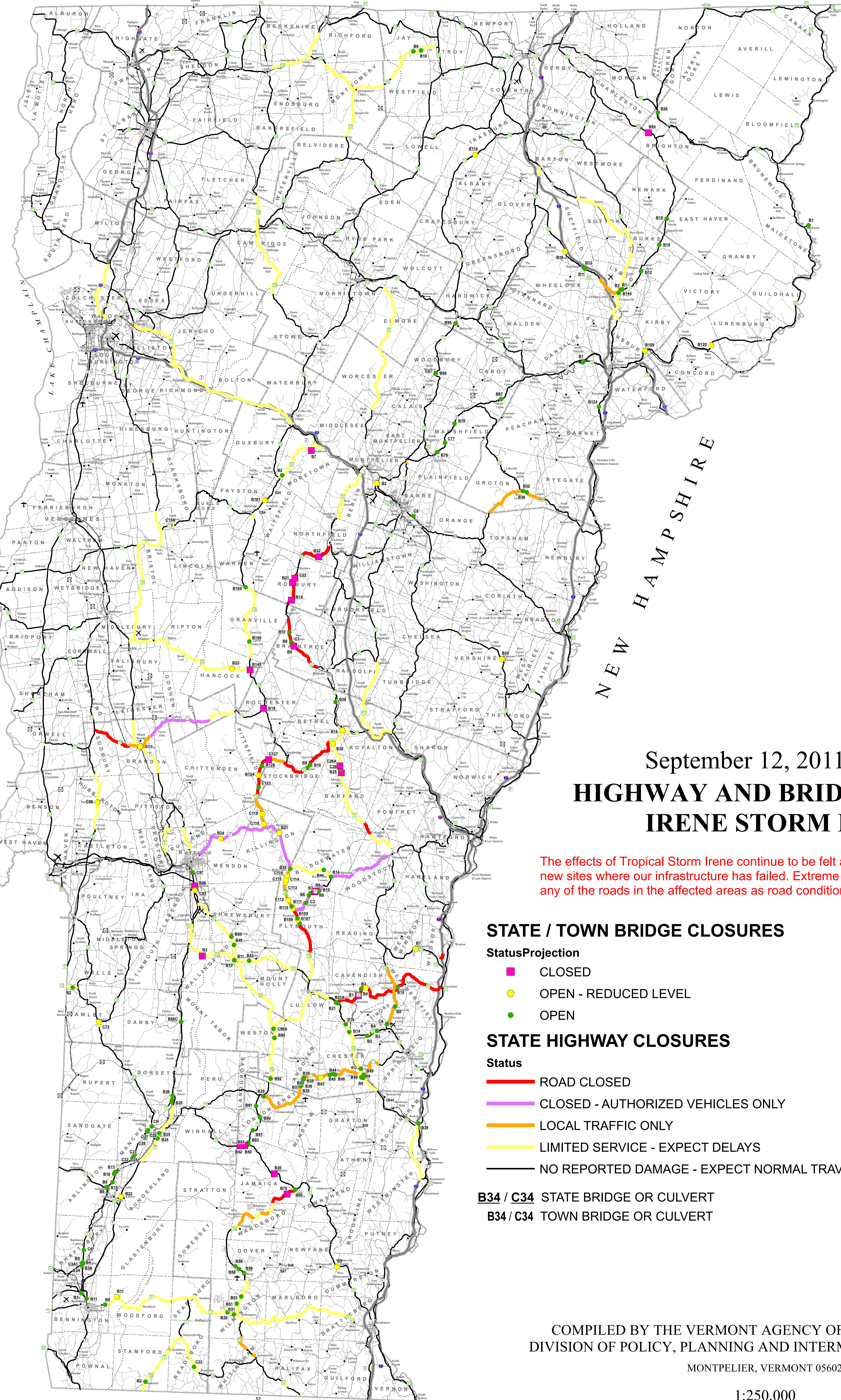


73°30'0"W 73°15'0"W 73°0'0"W 72°45'0"W 72°30'0"W 72°15'0"W 72°0'0"W 71°45'0"W 71°30'0"W 71°15'0"W 71°0'0"W

CANADA



September 12, 2011 - 4:10 PM HIGHWAY AND BRIDGE CLOSURES IRENE STORM DAMAGE

The effects of Tropical Storm Irene continue to be felt around Vermont. Daily there are new sites where our infrastructure has failed. Extreme caution must be used in travelling any of the roads in the affected areas as road conditions continue to change.

STATE / TOWN BRIDGE CLOSURES

- StatusProjection
- CLOSED
 - OPEN - REDUCED LEVEL
 - OPEN

- Public Airports
- × State
 - ✕ Municipal
 - † Private

STATE HIGHWAY CLOSURES

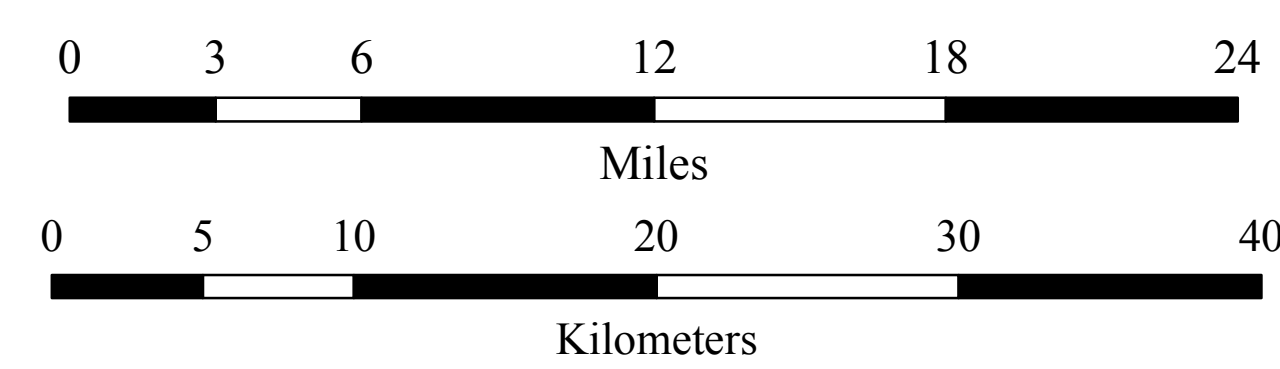
- Status
- ROAD CLOSED
 - CLOSED - AUTHORIZED VEHICLES ONLY
 - LOCAL TRAFFIC ONLY
 - LIMITED SERVICE - EXPECT DELAYS
 - NO REPORTED DAMAGE - EXPECT NORMAL TRAVEL

- Interstate Highways
- U.S. Routes
- State Highways
- Class 1 - 2 Town Highways
- Class 3 Town Highways
- Class 4 Town Highways
- Legal Trails
- Long Trail
- Appalachian Trail
- Railroad
- State Boundary
- County Boundary
- Town Boundary

B34 / C34 STATE BRIDGE OR CULVERT
B34 / C34 TOWN BRIDGE OR CULVERT

COMPILED BY THE VERMONT AGENCY OF TRANSPORTATION
DIVISION OF POLICY, PLANNING AND INTERMODAL DEVELOPMENT
MONTPELIER, VERMONT 05602

1:250,000



MASSACHUSETTS

73°30'0"W 73°15'0"W 73°0'0"W 72°45'0"W 72°30'0"W 72°15'0"W 72°0'0"W 71°45'0"W 71°30'0"W 71°15'0"W 71°0'0"W

For more information regarding this map, please contact the VTTrans Mapping Unit at (802) 828-2600 or at VT Agency of Transportation - Mapping Unit, 1 National Life Drive, Montpelier, VT 05633-5001. This map was funded in part through grants from the Federal Highway Administration, U.S. Department of Transportation. The representation of the authors expressed herein do not necessarily state or reflect those of the U.S. Department of Transportation.