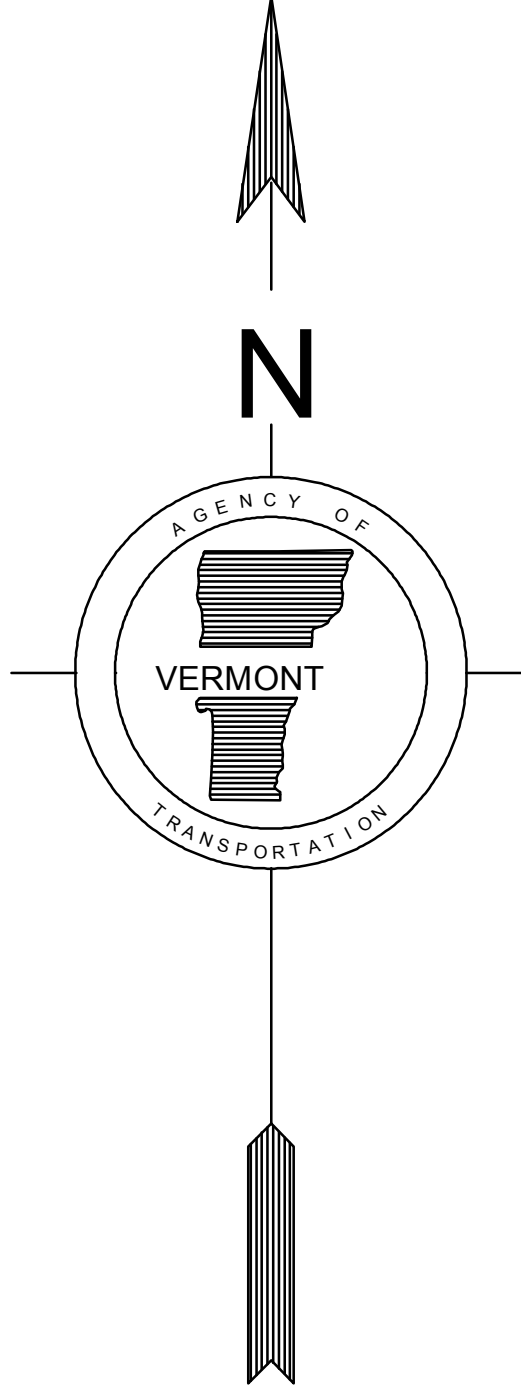
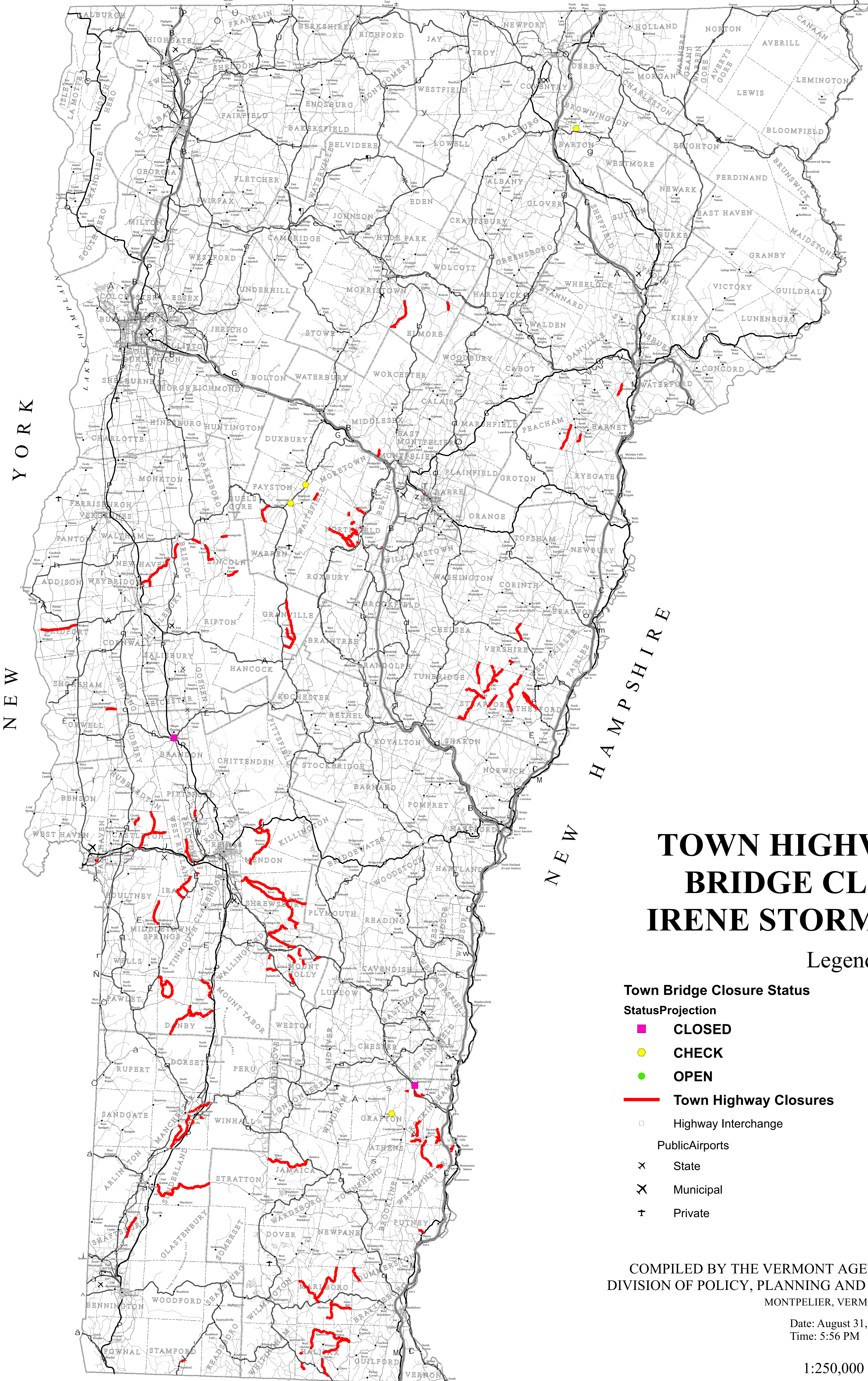


73°30'0"W 73°15'0"W 73°0'0"W 72°45'0"W 72°30'0"W 72°15'0"W 72°0'0"W 71°45'0"W 71°30'0"W 71°15'0"W 71°0'0"W

45°0'0"N 44°45'0"N 44°30'0"N 44°15'0"N 44°0'0"N 43°45'0"N 43°30'0"N 43°15'0"N 43°0'0"N 42°45'0"N 42°30'0"N 42°15'0"N 42°0'0"N

CANADA



TOWN HIGHWAY AND BRIDGE CLOSURES IRENE STORM DAMAGE

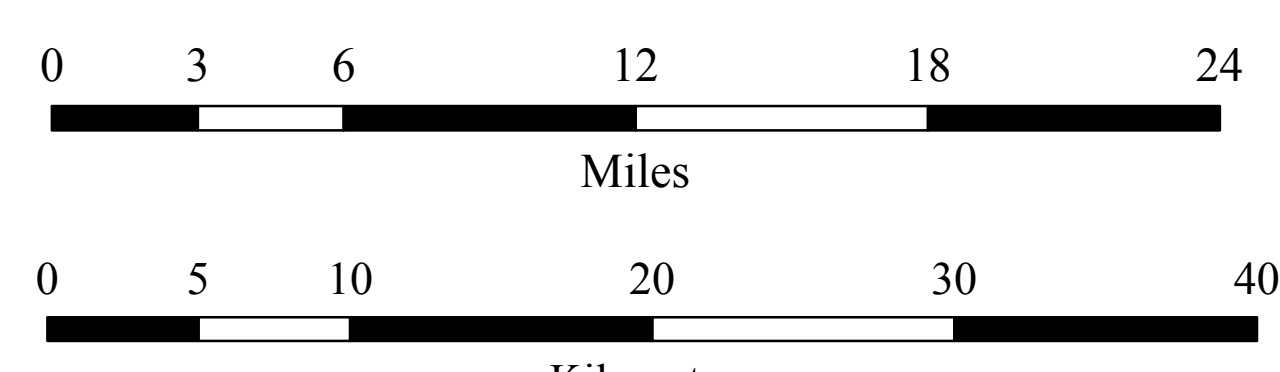
Legend

- | | |
|-----------------------------------|-----------------------------|
| Town Bridge Closure Status | — Interstate Highways |
| StatusProjection | — U.S. Routes |
| ■ CLOSED | — State Highways |
| ● CHECK | — Class 1 - 2 Town Highways |
| ● OPEN | — Class 3 Town Highways |
| — Town Highway Closures | — Class 4 Town Highways |
| □ Highway Interchange | — Legal Trails |
| PublicAirports | — Railroad |
| × State | — State Boundary |
| × Municipal | — County Boundary |
| † Private | — Town Boundary |

COMPILED BY THE VERMONT AGENCY OF TRANSPORTATION
DIVISION OF POLICY, PLANNING AND INTERMODAL DEVELOPMENT
MONTPELIER, VERMONT 05602

Date: August 31, 2011
Time: 5:56 PM

1:250,000



73°30'0"W 73°15'0"W 73°0'0"W 72°45'0"W 72°30'0"W 72°15'0"W 72°0'0"W 71°45'0"W 71°30'0"W 71°15'0"W 71°0'0"W

For more information regarding this map, please contact the VTTrans Mapping Unit at (802) 828-2800 or at VT Agency of Transportation - Mapping Unit, 1 National Life Drive, Montpelier, VT 05633-5001. This map was funded in part through grants from the Federal Highway Administration, U.S. Department of Transportation. The representation of the authors expressed herein do not necessarily state or reflect those of the U.S. Department of Transportation.