

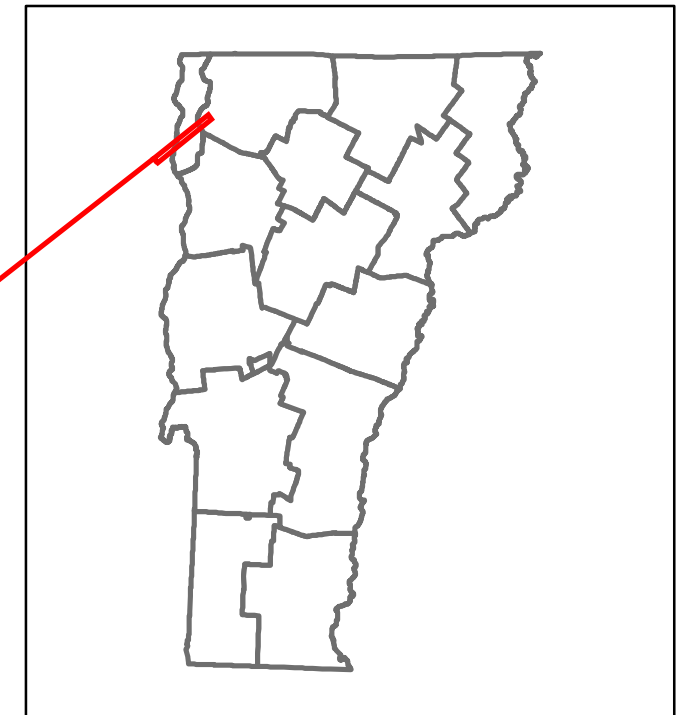


# Route Log and Progress Chart

**DRAFT**

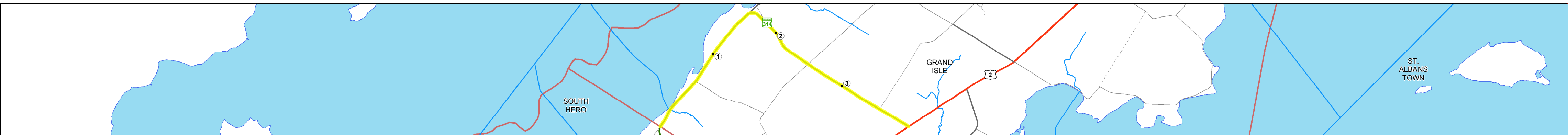
Please Note: Errors and Omissions May Exist.  
Contact the VTrans Mapping Section with questions or concerns.

DISTRICT	TOWN	ROUTE
8	GRAND ISLE	VT-314



**Base Map**

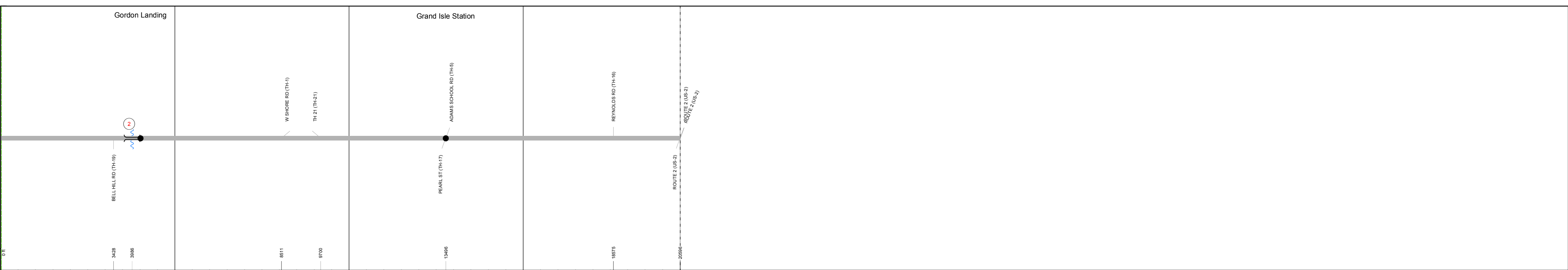
1 in = 0.75 miles



**Stick Diagram**

- Town Center
- Stations (Feet)
- Railroad Crossings
- Primary Structures
- Secondary Structures
- Divided State Highway
- State Highway
- Divided Town Highway
- Town Highway
- Streams (Hydraulic Structure)
- Town Boundary
- Village/UC Boundaries
- District Boundaries
- State/Town Highway Change
- Divided Highway Limits
- Ghost Section Boundary
- Federal Urban Area Limits

Scale: 1 INCH = 2000 FEET



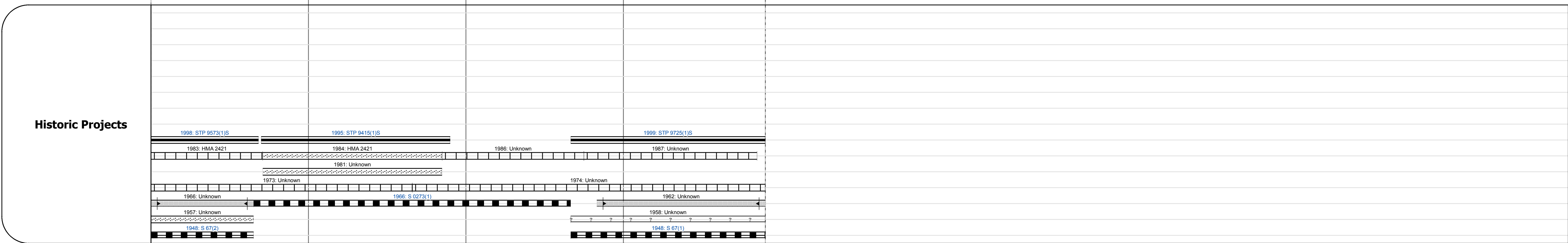
## STRUCTURE DESCRIPTIONS

<p><b>Culvert 2:</b>          Culvert - 1948          Structure No. 300273000207021          Length: 9'          Under Clearance: 6.0'          Facility Carried: VT314          Bridge Type: CONCRETE BOX          Features Intersected: DRY BROOK          Maintenance: State</p>
---

Road Widths	Travellane	Roadway	Lane Count	Base	Subbase
	28	24	26	4 25	2
	12' & 18' Stone	6" Soil Cement	12' Sand		12' & 18' Stone

Curves	3	4	3	3	12	3	6
--------	---	---	---	---	----	---	---

Grades	
--------	--



Maintenance Garage	District 8 - Highgate Garage
--------------------	------------------------------

Speed Zone	45
------------	----

Functional Class	5
------------------	---

National Highway System	
-------------------------	--

Limited Access Highway	
------------------------	--

Traffic Counters	G118
------------------	------

AA DT Counts	2014: 3200, 680, 360, 870	2013: 3100, 680, 350, 870	2012: 3100, 670, 350, 880	2011: 2900, 680, 360, 880	2010: 2800, 690, 360, 890
--------------	---------------------------	---------------------------	---------------------------	---------------------------	---------------------------

Crash Locations	2014: 1	2013: 1	2012: 1	2011: 1	2010: 1
-----------------	---------	---------	---------	---------	---------

<p><b>Historic Projects</b></p> <ul style="list-style-type: none"> <li>Unknown</li> <li>Retreatment</li> <li>Resurface</li> <li>Bituminous Mix</li> <li>Skinny Mix</li> <li>Bituminous Seal</li> <li>Surface Treated Gravel</li> <li>Plant Mix</li> <li>Reclaimed Base and Bituminous Concrete</li> </ul>	<p><b>Functional Class</b></p> <ul style="list-style-type: none"> <li>1 - Interstate System</li> <li>2 - Other Freeways and Expressways</li> <li>3 - Principal Arterial</li> <li>4 - Minor Arterial</li> <li>5 - Major Collector</li> <li>6 - Minor Collector</li> </ul>	<p><b>Curves</b></p> <ul style="list-style-type: none"> <li>Left (segress)</li> <li>Right</li> </ul>	<p><b>Road Widths</b></p> <p>(ft)</p>	<p><b>AA DT</b></p> <p>(count)</p>	<p><b>Mileage by Functional Class By Sheet</b></p> <p>0273 5 - Major collector 3.901</p>	<p><b>Mileage by Town By Sheet</b></p> <p>GRAND ISLE - V314-0702 3.901 of 3.901</p>	<p><b>DISTRICT</b></p> <p>8</p>	<p><b>TOWN</b></p> <p>GRAND ISLE</p>	<p><b>Date:</b> 11/15/16</p>	<p><b>ROUTE</b></p> <p>VT-314</p> <p>ETE mileage: 1.592 to 5.493</p>
<p>Page Total Mileage: 3.901 mi</p>						<p>Page Total Mileage: 3.901 mi</p>				

For More Information Contact - Vermont Agency of Transportation, Policy, Planning and Intermodal Development Division - Mapping Section, 1 National Life Drive, Montpelier, VT 05633-5001 Telephone: 802-828-2600.