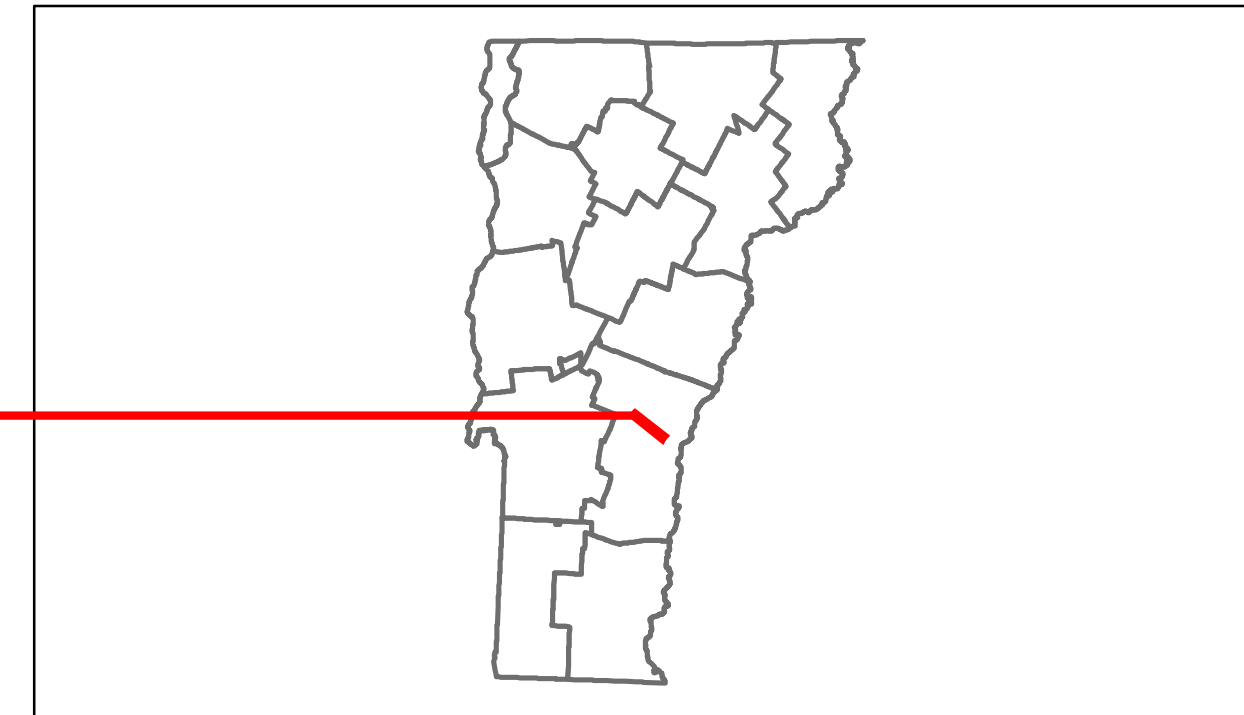




# Route Log Progress Chart

**DRAFT**  
Please Note: Errors and Omissions May Exist.  
Contact the VTrans Mapping Unit with questions or concerns.

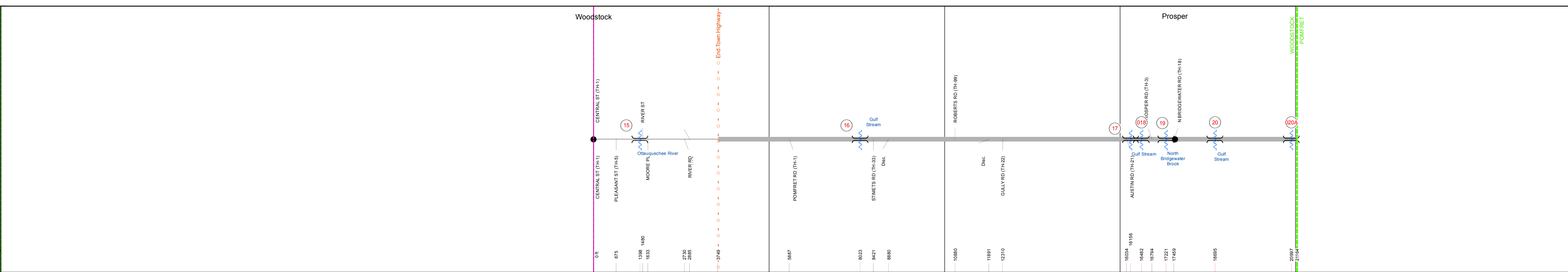
DISTRICT	TOWN	ROUTE
4	WOODSTOCK	VT-12



**Stick Diagram**

- Town Boundary
- Village/UC Boundaries
- District Boundaries
- State/Town Highway Change
- Divided Highway Limits
- Ghost Section Boundary
- FAU Limits
- Streams
- Town Center
- Primary Structures
- Secondary Structures
- Stations (Feet)
- Railroad Crossings
- Divided State Highway
- State Highway
- Divided Class 1 Town Highway
- Class 1 Town Highway

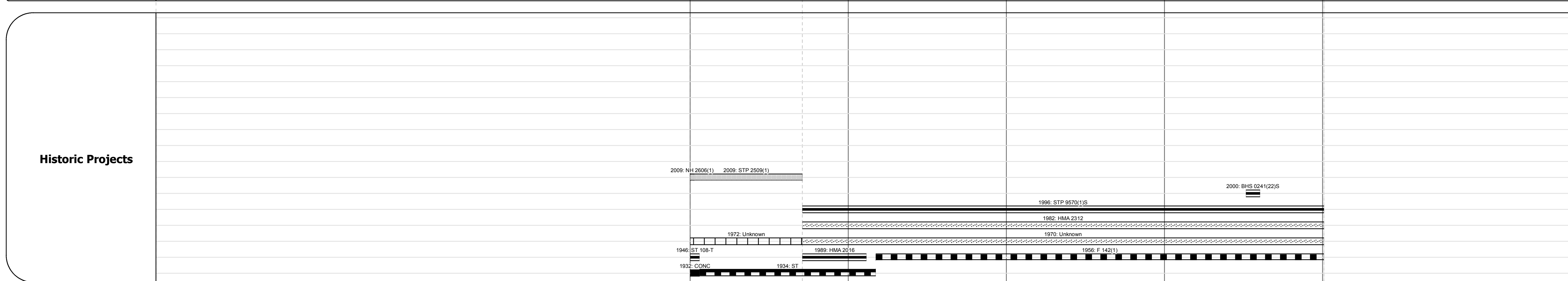
Scale: 1in = 2000 FEET



Road Widths	Travellane	Roadway	Lane Count	Base	Subbase
	20	20	2	26	16
				4" Bit. Conc.	24" Gravel

Curves	3	4	5	5	4	7	3	3
--------	---	---	---	---	---	---	---	---

Grades								
--------	--	--	--	--	--	--	--	--



Maintenance Garage	(Not State Maintained)	District 4 - Royalton Garage
--------------------	------------------------	------------------------------

Traffic Counters	86Y250, 86Y245, 86Y282, 86Y184	86Y138, 86Y318
------------------	--------------------------------	----------------

Functional Class	7 - Rural - Major collector
------------------	-----------------------------

Speed Zone	35
------------	----

Year	Station 1	Station 2	Station 3	Station 4	Station 5
2012	1800 - 3100	3100	2000	1500	
2011	1800 - 3500	3100	2000	1500	
2010	1800 - 3800	3100	2000	1500	
2009	2100 - 3900	3300	1900	1600	
2008	2300 - 3900	3400	1800	1600	

Year	Crash Locations
2012	
2011	
2010	
2009	
2008	

## DESCRIPTION BLOCK

**Bridge 15:**  
Stringer/multi-beam or girder - 1980  
Structure No. 200241001514242  
Length: 112'  
Width: 25.4'  
Facility Carried: VT 00012 ML  
Bridge Type: WELDED PLATE GIRDER  
Features Intersected: OTTAUQUECHEE RIVER  
Surface: Bituminous  
Maintenance/Ownership: Town

**Bridge 16:**  
Stringer/multi-beam or girder - 1956  
Structure No. 200241001614242  
Length: 92'  
Width: 30.2'  
Facility Carried: VT 00012 ML  
Bridge Type: ROLLED BEAM  
Features Intersected: GULF STREAM  
Surface: Bituminous  
Maintenance/Ownership: State

**Bridge 17:**  
Stringer/multi-beam or girder - 1956  
Structure No. 200241001714242  
Length: 97'  
Width: 29.9'  
Facility Carried: VT 00012 ML  
Bridge Type: ROLLED BEAM  
Features Intersected: GULF STREAM  
Surface: Bituminous  
Maintenance/Ownership: State

**Culvert 18:**  
Culvert - 1956  
Structure No. 300241001814241  
Length: 7'  
Under Clearance: 7.0'  
Facility Carried: VT12  
Bridge Type: CGMP  
Features Intersected: BROOK  
Maintenance: State

**Bridge 19:**  
Tee Beam - 1938  
Structure No. 200241001914242  
Length: 49'  
Width: 30.4'  
Facility Carried: VT 00012 ML  
Bridge Type: CONCRETE T-BEAM  
Features Intersected: NO. BRIDGEWATER BROOK  
Surface: Bituminous  
Maintenance/Ownership: State

**Bridge 20:**  
Stringer/multi-beam or girder - 1999  
Structure No. 200241002014242  
Length: 79'  
Width: 30.6'  
Facility Carried: VT 00012 ML  
Bridge Type: WELDED GIRDER  
Features Intersected: GULF STREAM  
Surface: Bituminous  
Maintenance/Ownership: State

**Culvert 20A:**  
Culvert - 1956  
Structure No. 300241020A14241  
Length: 6'  
Under Clearance: 5.5'  
Facility Carried: VT12  
Bridge Type: ACGMP  
Features Intersected: CATTLE PASS  
Maintenance: State

Historic Projects	Functional Class	Curves	Road Widths	AAADT	Mileage by Functional Class By Sheet	Mileage by Town By Sheet	DISTRICT	TOWN	Date: 04/02/14	ROUTE
Retreatment, Resurface, Unknown, Bituminous Mix, Skimmy Mix, Bituminous Seal	1-19	curve left, curve right	(ft)	(count)	0241 7 - Rural - Major collector 4.008	WOODSTOCK - V012-1424 Ghost Section - US-4 (9.648 to 6.269) 4.008 of 4.008 3.379	4	WOODSTOCK	1 of 1 TWN mileage: 0.0 to 4.008	VT-12 ETE mileage: 8.099 to 12.107
					Total Mileage: 4.008 mi		Total Mileage: 4.008 mi			

For More Information Contact - Vermont Agency of Transportation, Policy, Planning and Intermodal Development Division - Mapping Unit, 1 National Life Drive, Montpelier, VT 05633-5001 Telephone: 802-828-2600.