

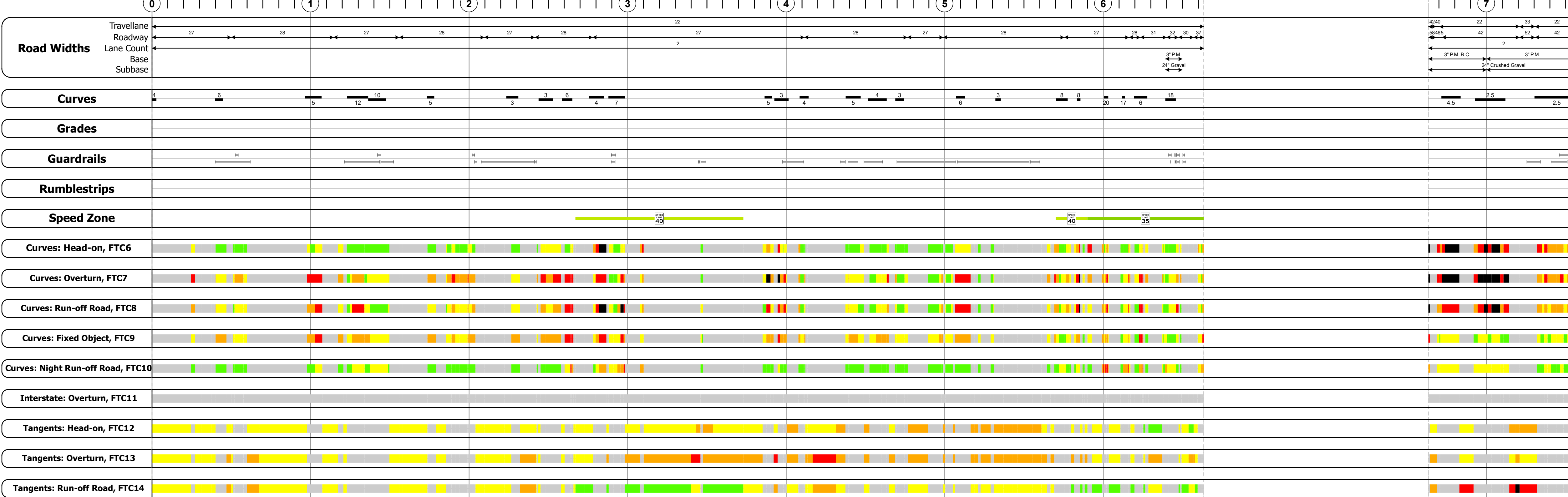
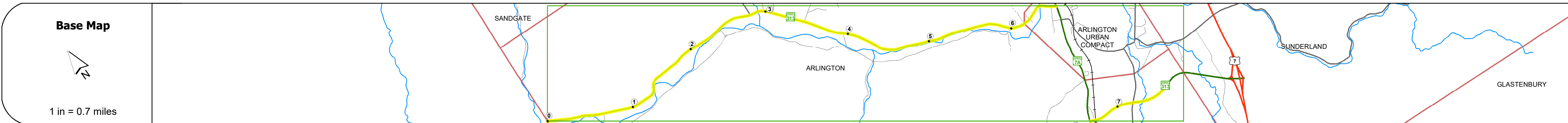
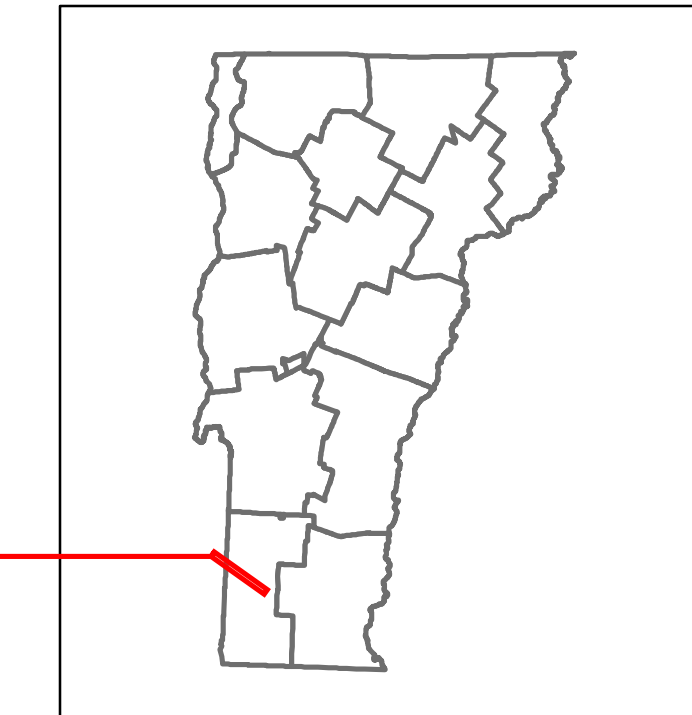


Route Log and Progress Chart

DRAFT

Please Note: Errors and Omissions May Exist.
Contact the VTrans Mapping Section with questions or concerns.

DISTRICT	TOWN	ROUTE
1	ARLINGTON	VT-313



Year	Station 0+00	Station 1+00	Station 2+00	Station 3+00	Station 4+00	Station 5+00	Station 6+00	Station 7+00
2022	1372				2582			2111 2507
2021	1361				2562			2245 3021
2020	1201				2261			1981 2666
2019	1418				2670			2339 3147
2018	1400				2700			2300 2800

STRUCTURE DESCRIPTIONS

- Bridge 1:** Culvert - 1953, Structure No. 300108000102011, Length: 6', Under Clearance: 6.0', Weight Limit: 0, Facility Carried: VT313, Structure Type: ACCGMPP, Features Intersected: BROOK, Inspection Date: 11/2018, Maintenance: State
- Bridge 2:** Culvert - 1953, Structure No. 300108000202011, Length: 9', Under Clearance: 7.0', Weight Limit: 0, Facility Carried: VT313, Structure Type: CGMPPA, Features Intersected: BROOK, Inspection Date: 11/2018, Maintenance: State
- Bridge 4:** Tee Beam - 1925, Structure No. 200108000402012, Length: 32', Height: 100.0', Width: 30.0', Weight Limit: 0, Facility Carried: VT 00313 ML, Structure Type: CONCRETE T-BEAM, Features Intersected: GREEN RIVER, Surface: Bituminous, Inspection Date: 6/2021, Maintenance/Ownership: State
- Bridge 5:** Stringer/multi-beam or girder - 1985, Structure No. 200108000502012, Length: 78', Height: 100.0', Width: 33.0', Weight Limit: 0, Facility Carried: VT 00313 ML, Structure Type: ROLLED BEAM, Features Intersected: BATTEN KILL RIVER, Surface: Bituminous, Inspection Date: 6/2021, Maintenance/Ownership: State
- Bridge 6:** Stringer/multi-beam or girder - 1985, Structure No. 200108000602012, Length: 84', Height: 100.0', Width: 34.0', Weight Limit: 0, Facility Carried: VT 00313 ML, Structure Type: ROLLED BEAM, Features Intersected: BATTEN KILL RIVER, Surface: Bituminous, Inspection Date: 6/2021, Maintenance/Ownership: State
- Bridge 8:** Girder and floorbeam system - 1978, Structure No. 200319000802012, Length: 94', Weight Limit: 0, Facility Carried: RAILROAD, Structure Type: WELD PLOT THRU GIRDER, Features Intersected: VT RR OVER VT 313
- Bridge 9:** Culvert - 1978, Structure No. 200319000902012, Length: 24', Height: 100.0', Weight Limit: 0, Facility Carried: VT 00313 ML, Structure Type: TWIN CELL RC BOX, Features Intersected: WARM BROOK, Inspection Date: 6/2021, Maintenance/Ownership: State
- Bridge 10:** Culvert - 1979, Structure No. 300319001002011, Length: 15', Under Clearance: 6.0', Weight Limit: 0, Facility Carried: VT313, Structure Type: TWIN ACCGMPP, Features Intersected: WARM BROOK, Inspection Date: 11/2018, Maintenance: State

Historic Projects Unknown, Retreatment, Resurface, Bituminous Mix, Skiny Mix, Bituminous Seal	Functional Class 1- Interstate System, 2- Other Freeways and Expressways, 3- Principal Arterial, 4- Minor Arterial, 5- Major Collector, 6- Minor Collector	Crash Locations Fatal, Injury, Property Damage Only, Unknown Crash Type	Mileage by Functional Class By Sheet 319-1 4 - Minor Arterial, 0108 5 - Major Collector, 0.949, 6.634	Mileage by Town By Sheet ARLINGTON - V313-0201, Ghost Section - (VT-7A, MM 3.906 to 2.489), 7.583 of 7.908	DISTRICT 1	TOWN ARLINGTON	Date: 04/10/24	ROUTE VT-313 ETE mileage: 0.0 to 7.583
Page Total Mileage: 7.583 mi				Page Total Mileage: 7.583 mi		1 of 2 TWN mileage: 0.0 to 7.583		