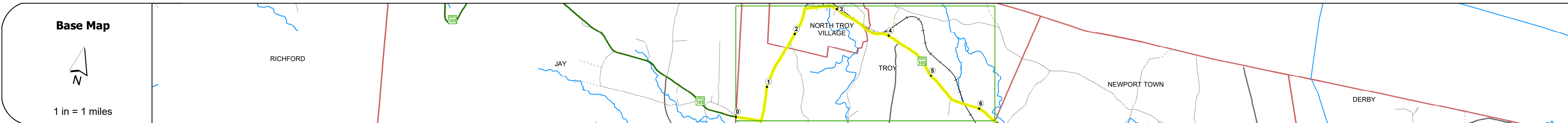
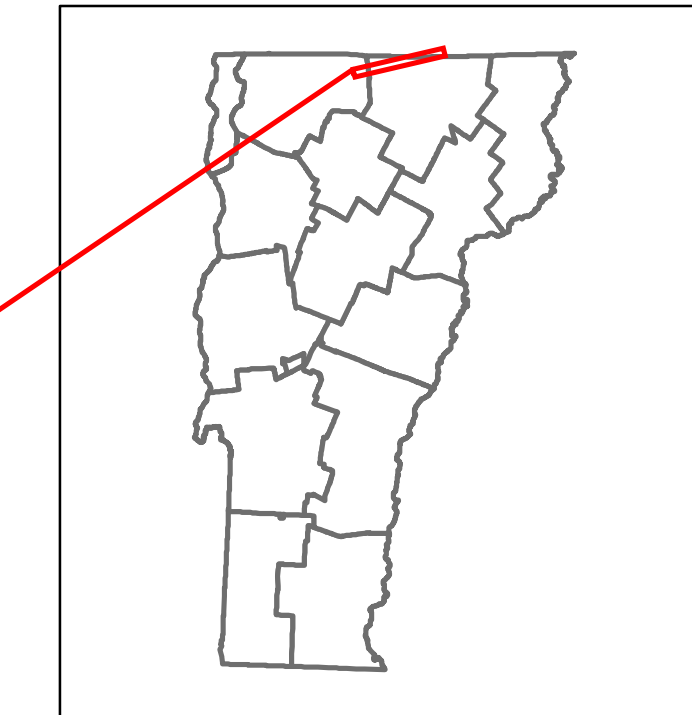
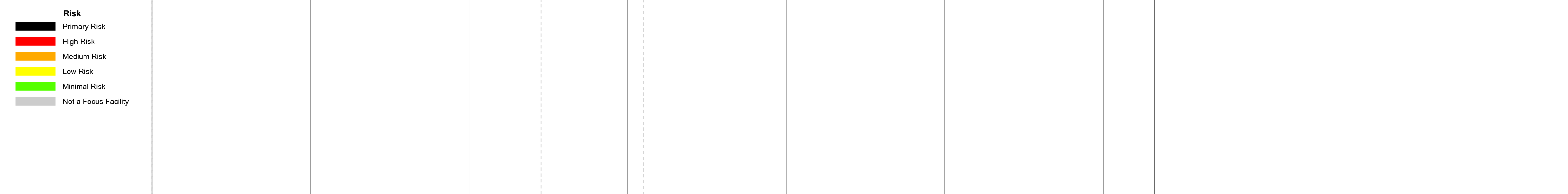
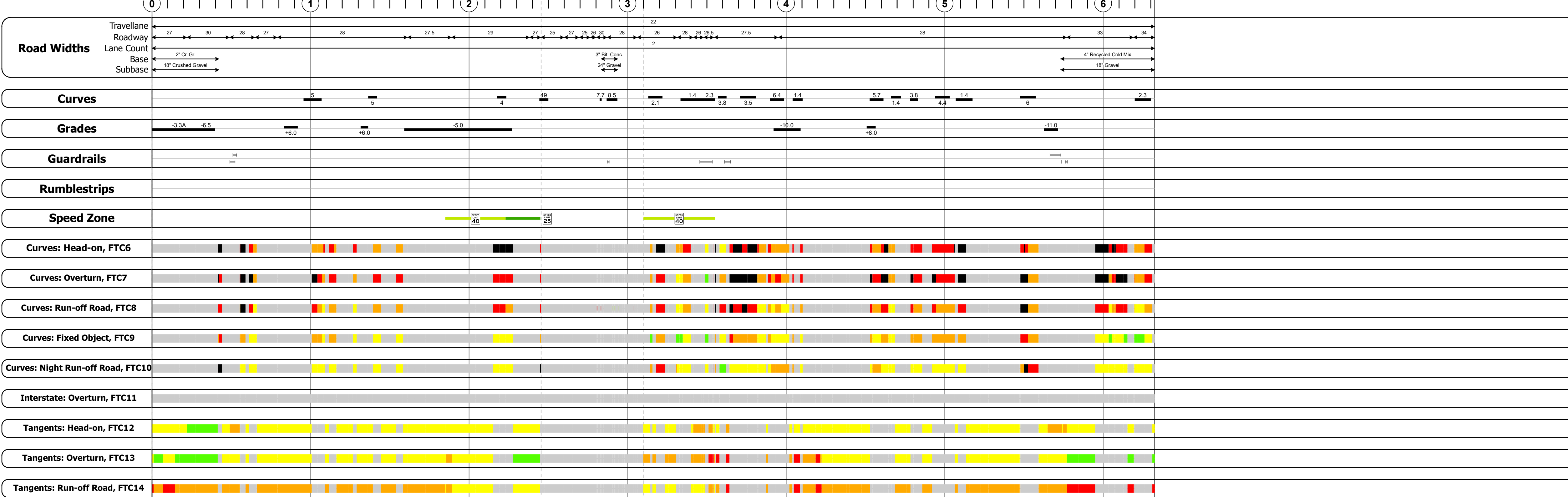


DISTRICT	TOWN	ROUTE
9	TROY	VT-105



### STRUCTURE DESCRIPTIONS

**Bridge 54:**  
Stringer/multi-beam or girder - 1994  
Structure No: 200034005410172  
Length: 162'  
Height: 100.0'  
Width: 32.0'  
Weight Limit: 0  
Facility Carried: VT 00105 ML  
Structure Type: WELDED PLATE GIRDER  
Features Intersected: MISSISQUOI RIVER  
Surface: Bituminous  
Inspection Date: 7/2021  
Maintenance/Ownership: Town



Year	0.0	0.5	1.0	1.5	2.0	2.5	3.0	3.5	4.0	4.5	5.0	5.5	6.0	6.5
2022	579		1269				1338							1827
2021	559		1341				1327							2062
2020	493		1184				1171							1820
2019	582		1398				1382							2149
2018	820		1400		1900		1400			2100				2000

<b>Historic Projects</b> Unknown, Retreatment, Resurface, Bituminous Mix, Skiny Mix, Bituminous Seal Bituminous Concrete, Bituminous Macadam, Cold Plane and Bituminous Concrete, Concrete, Surface Treated Gravel, Plant Mix, Reclaimed Base and Bituminous Concrete	<b>Functional Class</b> 1- Interstate System, 2- Other Freeways and Expressways, 3- Principal Arterial, 4- Minor Arterial, 5- Major Collector, 6- Minor Collector	<b>Curves</b> Left (dogleg), Right (dogleg), Grades (up/down), Road Widths (ft)	<b>Traffic Counters</b> Continuous (CTC), Weigh-In-Motion (WIM), Short-Term, Scheduled, Short-Term, Unscheduled	<b>Crash Locations</b> Fatal, Injury, Property Damage Only, Unknown Crash Type, High Crash Locations (HCL's)	<b>Mileage by Functional Class By Sheet</b> 034-2 4 - Minor Arterial 6.325	<b>Mileage by Town By Sheet</b> TROY - V105-1017 6.325 of 6.325	<b>DISTRICT</b> 9	<b>TOWN</b> TROY	<b>Date:</b> 01/17/24	<b>ROUTE</b> VT-105 ETE mileage: 43.214 to 49.539
<b>Page Total Mileage: 6.325 mi</b>								<b>1 of 1</b> TWN mileage: 0.0 to 6.325	<b>Page Total Mileage: 6.325 mi</b>	