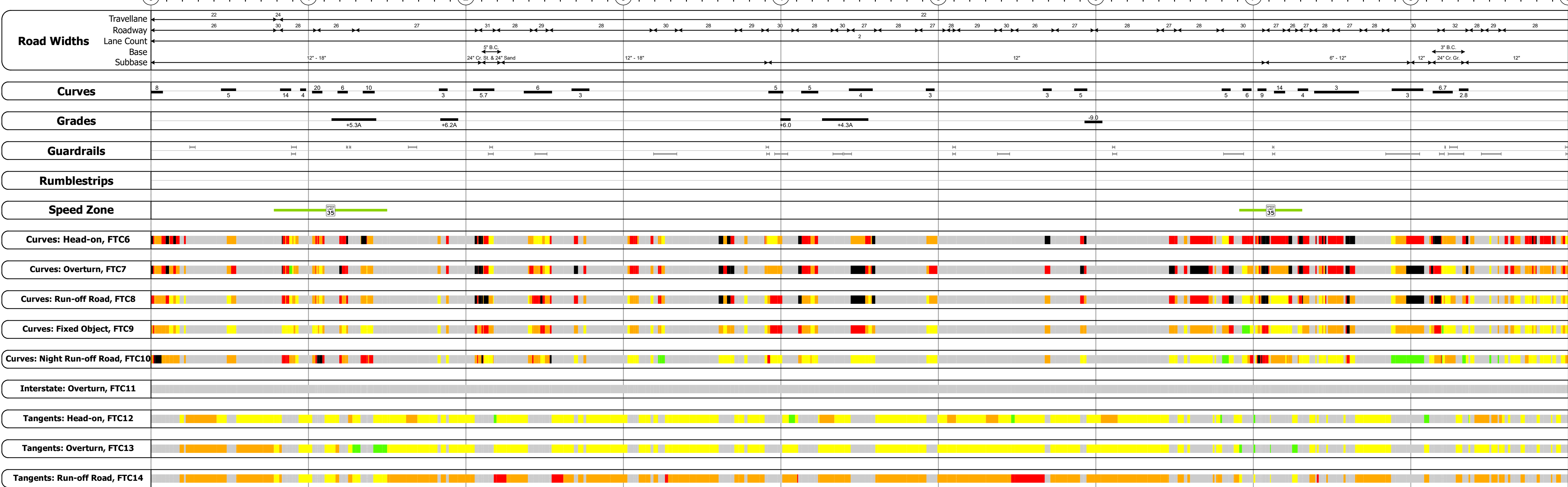
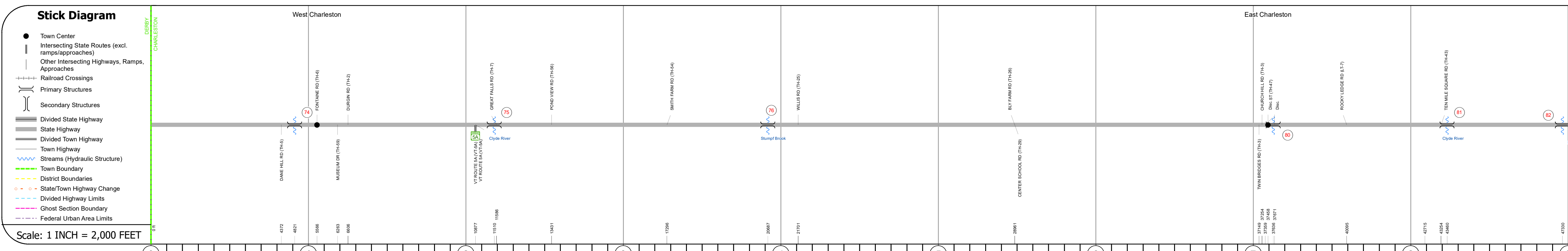
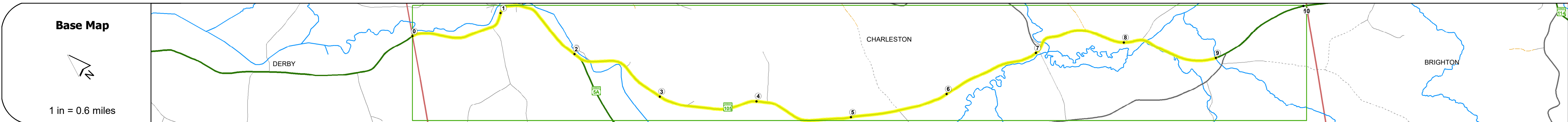
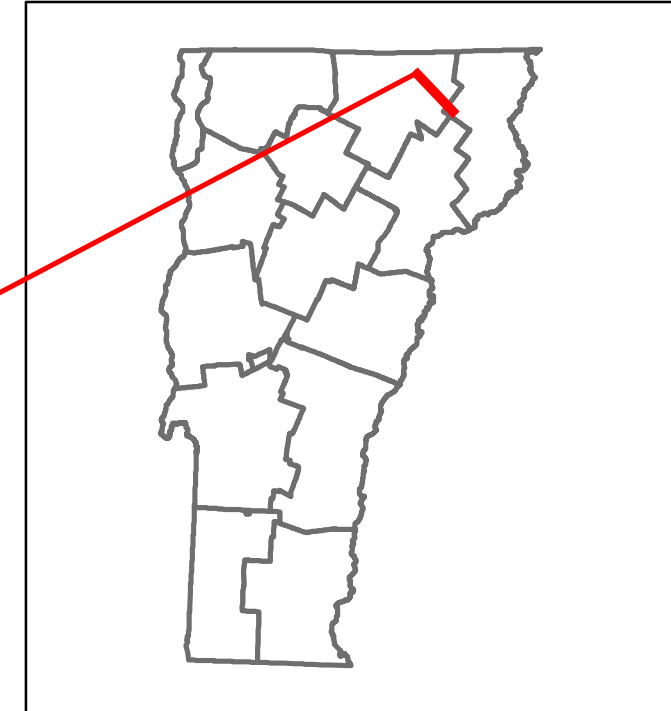


DISTRICT	TOWN	ROUTE
9	CHARLESTON	VT-105



Risk	Primary Risk	High Risk	Medium Risk	Low Risk	Minimal Risk	Not a Focus Facility
2022	2108	1881				1102
2021	2392	1866				1093
2020	2111	1647				965
2019	2492	1945				1139
2018	2100	2000				1200

### STRUCTURE DESCRIPTIONS

**Bridge 74:**  
Slab - 1928  
Structure No. 300034007410041  
Length: 15'  
Width: 36.0'  
Under Clearance: 7.0'  
Weight Limit: 0  
Facility Carried: VT105  
Structure Type: CONCRETE SLAB  
Features Intersected: BROOK  
Surface: Bituminous  
Inspection Date: 11/2022  
Maintenance: State

**Bridge 75:**  
Stringer/multi-beam or girder - 1997  
Structure No. 200034007510042  
Length: 78'  
Height: 100.0'  
Width: 30.0'  
Weight Limit: 0  
Facility Carried: VT 00105 ML  
Structure Type: ROLLED BEAM  
Features Intersected: CLYDE RIVER  
Surface: Bituminous  
Inspection Date: 7/2021  
Maintenance/Ownership: State

**Bridge 76:**  
Culvert - 1940  
Structure No. 300034007610041  
Length: 13'  
Under Clearance: 4.0'  
Weight Limit: 0  
Facility Carried: VT105  
Structure Type: RC BOX  
Features Intersected: STUMPF BROOK  
Inspection Date: 11/2022  
Maintenance: State

**Bridge 80:**  
Slab - 1940  
Structure No. 200034008010042  
Length: 23'  
Height: 100.0'  
Width: 35.0'  
Weight Limit: 0  
Facility Carried: VT 00105 ML  
Structure Type: CONCRETE SLAB  
Features Intersected: BROOK  
Surface: Bituminous  
Inspection Date: 7/2021  
Maintenance/Ownership: State

**Bridge 81:**  
Stringer/multi-beam or girder - 1995  
Structure No. 200034008110042  
Length: 106'  
Height: 100.0'  
Width: 35.0'  
Weight Limit: 0  
Facility Carried: VT 00105 ML  
Structure Type: WELDED GIRDER  
Features Intersected: CLYDE RIVER  
Surface: Bituminous  
Inspection Date: 7/2021  
Maintenance/Ownership: State

**Bridge 82:**  
Culvert - 1938  
Structure No. 300034008210041  
Length: 10'  
Under Clearance: 7.0'  
Weight Limit: 0  
Facility Carried: VT105  
Structure Type: RC BOX  
Features Intersected: BROOK  
Inspection Date: 11/2022  
Maintenance: State

<b>Historic Projects</b> <ul style="list-style-type: none"> <li>Unknown</li> <li>Retreatment</li> <li>Resurface</li> <li>Bituminous Mix</li> <li>Skinny Mix</li> <li>Bituminous Seal</li> </ul>	<b>Functional Class</b> <ul style="list-style-type: none"> <li>1 - Interstate System</li> <li>2 - Other Freeways and Expressways</li> <li>3 - Principal Arterial</li> <li>4 - Minor Arterial</li> <li>5 - Major Collector</li> <li>6 - Minor Collector</li> </ul>	<b>Curves</b> <ul style="list-style-type: none"> <li>Left (dogleg)</li> <li>Right</li> </ul>	<b>Grades</b> <ul style="list-style-type: none"> <li>Left (dogleg) grade up</li> <li>Right (dogleg) grade down</li> </ul>	<b>Traffic Counters</b> <ul style="list-style-type: none"> <li>Continuous (CTC)</li> <li>Weight-In-Motion (WIM)</li> <li>Short-Term, Scheduled</li> <li>Short-Term, Unscheduled</li> </ul>	<b>Crash Locations</b> <ul style="list-style-type: none"> <li>Fatal</li> <li>Injury</li> <li>Property Damage Only</li> <li>Unknown Crash Type</li> </ul>	<b>Mileage by Functional Class By Sheet</b> 034-3 4 - minor Arterial 9.000	<b>Mileage by Town By Sheet</b> CHARLESTON - V105-1004 9.0 of 10.03	<b>DISTRICT</b> 9	<b>TOWN</b> CHARLESTON	<b>Date:</b> 01/17/24	<b>ROUTE</b> VT-105 ETE mileage: 62.51 to 71.51
--	--	---	--	---	---	---	--	----------------------	---------------------------	-----------------------	---