

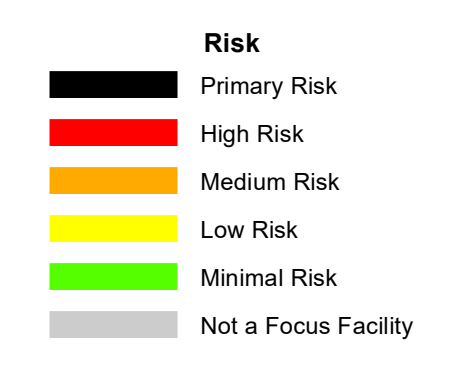
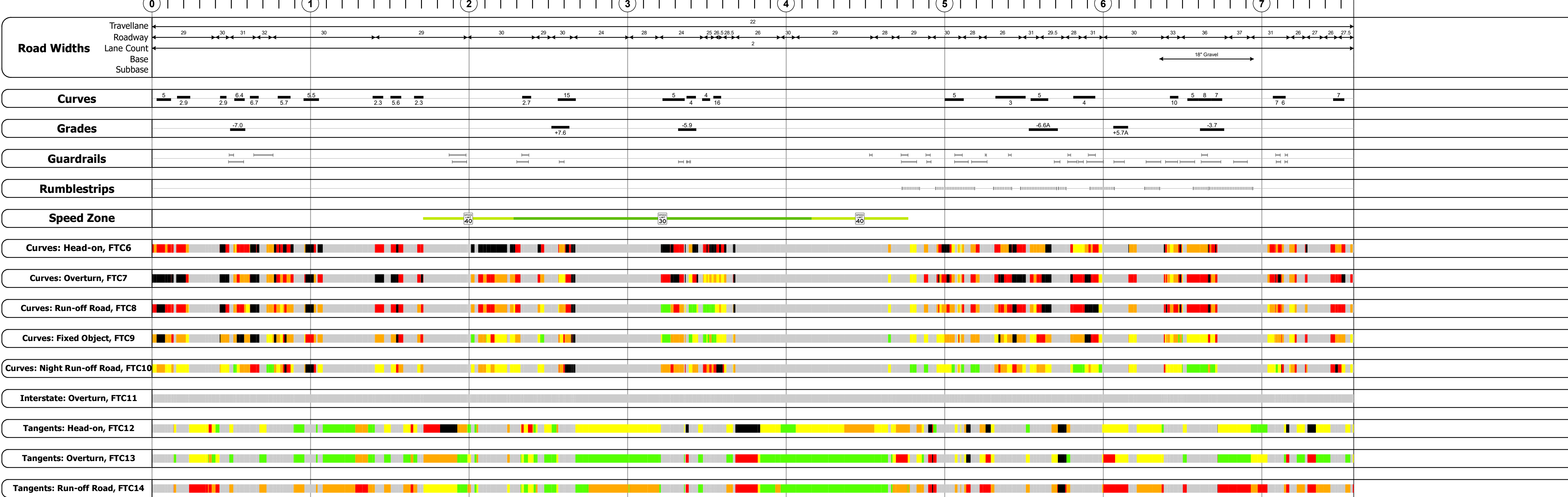
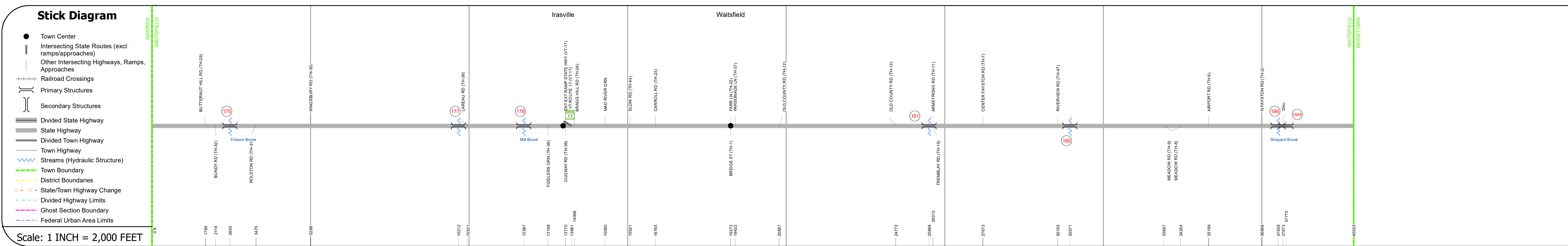
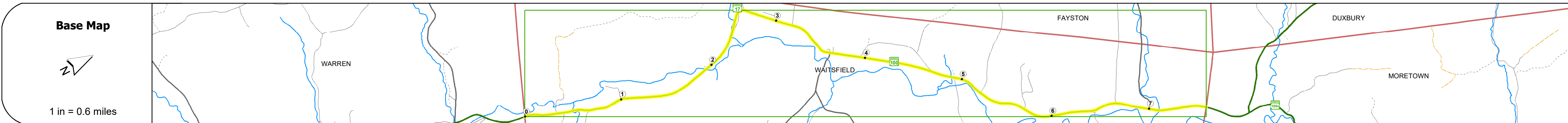
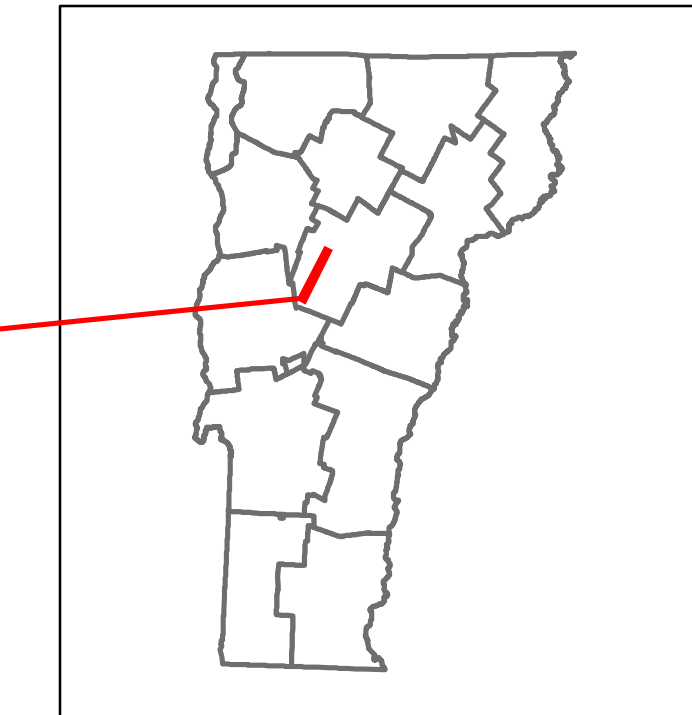


Route Log and Progress Chart

DRAFT

Please Note: Errors and Omissions May Exist.
Contact the VTrans Mapping Section with questions or concerns.

DISTRICT	TOWN	ROUTE
6	WAITSFIELD	VT-100



Year	Station 0-1	Station 1-2	Station 2-3	Station 3-4	Station 4-5	Station 5-6	Station 6-7
2022		3897		4865			6174
2021		5309		6294			6125
2020		4686		5555			5406
2019		5533		6558			6365
2018		5500	7700	6600			6400

STRUCTURE DESCRIPTIONS

Bridge 175:
Culvert - 1971
Structure No. 300013017512161
Length: 12'
Under Clearance: 9.0'
Weight Limit: 0
Facility Carried: VT100
Structure Type: CGMPPA W CONC INVERT
Features Intersected: CHARLES FOLSOM BRK.
Inspection Date: 12/2022
Maintenance: State

Bridge 177:
Stringer/multi-beam or girder - 2016
Structure No. 200013017712162
Length: 180'
Height: 100.0'
Width: 32.0'
Weight Limit: 0
Facility Carried: VT 00100 ML
Structure Type: WELDED PLATE GIRDER
Features Intersected: MAD RIVER
Surface: Bituminous
Inspection Date: 8/2021
Maintenance/Ownership: State

Bridge 178:
Stringer/multi-beam or girder - 1938
Structure No. 200013017812162
Length: 69'
Height: 100.0'
Width: 30.0'
Weight Limit: 0
Facility Carried: VT 00100 ML
Structure Type: ROLLED BEAM
Features Intersected: MILL BROOK
Surface: Bituminous
Inspection Date: 8/2021
Maintenance/Ownership: State

Bridge 181:
Slab - 1940
Structure No. 200013018112162
Length: 25'
Height: 100.0'
Width: 26.0'
Weight Limit: 0
Facility Carried: VT 00100 ML
Structure Type: CONCRETE SLAB
Features Intersected: BROOK
Surface: Bituminous
Inspection Date: 8/2021
Maintenance/Ownership: State

Bridge 185:
Culvert - 1948
Structure No. 300013018512161
Length: 8'
Under Clearance: 6.0'
Weight Limit: 0
Facility Carried: VT100
Structure Type: RC BOX
Features Intersected: BROOK
Surface: Bituminous
Inspection Date: 12/2022
Maintenance: State

Bridge 186:
Stringer/multi-beam or girder - 1938
Structure No. 200013018612162
Length: 84'
Height: 100.0'
Width: 28.0'
Weight Limit: 0
Facility Carried: VT 00100 ML
Structure Type: ROLLED BEAM
Features Intersected: SHEPARD BROOK
Surface: Bituminous
Inspection Date: 8/2021
Maintenance/Ownership: State

Bridge 186A:
Culvert - 2009
Structure No. 300013186A12161
Length: 10'
Under Clearance: 6.0'
Weight Limit: 0
Facility Carried: VT100
Structure Type: SEGMENTAL RC BOX
Features Intersected: CATTLE PASS
Inspection Date: 12/2022
Maintenance: State

Historic Projects <ul style="list-style-type: none"> Unknown Retreatment Resurface Bituminous Mix Skinny Mix Bituminous Seal 	Functional Class <ul style="list-style-type: none"> 1 - Interstate 2 - Other 3 - Principal Arterial 4 - Minor Arterial 5 - Major Collector 6 - Minor Collector 	Crash Locations <ul style="list-style-type: none"> Fatal Injury Property Damage Only Unknown Crash Type 	Mileage by Functional Class By Sheet 013-4 4 - Minor Arterial 7.580	Mileage by Town By Sheet WAITSFIELD - v100-1216 7.58 of 7.58	DISTRICT 6	TOWN WAITSFIELD	Date: 02/15/24	ROUTE VT-100
Speed Zones 25 30 35 40 45 50 55 60 65	Curves Left Right Grades Left Right Road Widths (ft)	Traffic Counters Continuous (CTC) Weigh-In-Motion (WIM) Short-Term, Scheduled Short-Term, Unscheduled	High Crash Locations (HCL's) Sections (& Intersections) 1 - 100 (1 - 10) 101 - 200 (11 - 20) 401 - 800 (41 - 113)	Page Total Mileage: 7.580 mi	Page Total Mileage: 7.58 mi	1 of 1 TWN mileage: 0.0 to 7.58	ETE mileage: 126.905 to 134.485	

For More Information Contact - Vermont Agency of Transportation, Policy, Planning and Intermodal Development Division - Mapping Section, 219 North Main Street, Barre, VT 05641 Telephone: 802-828-2600.