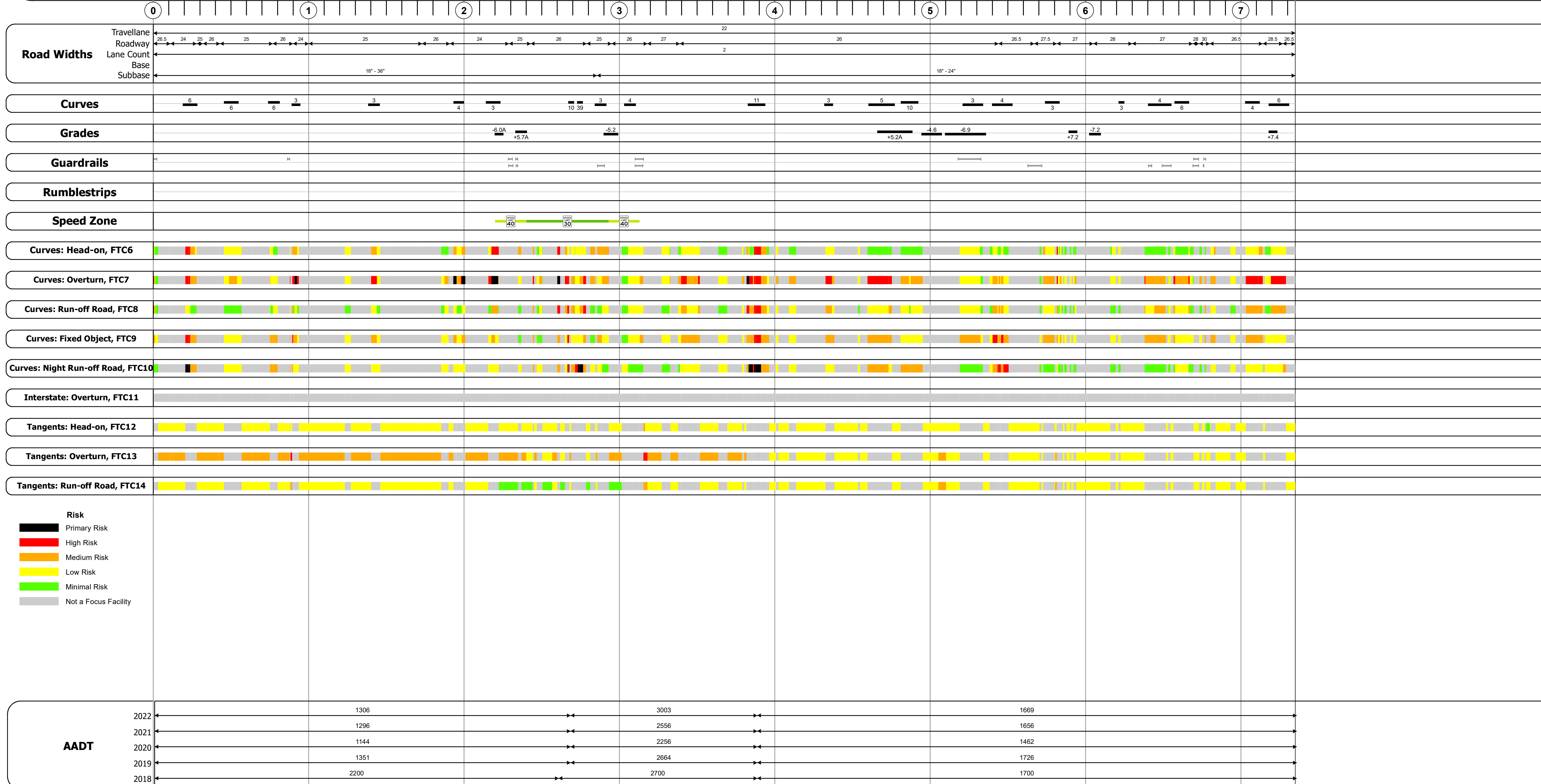
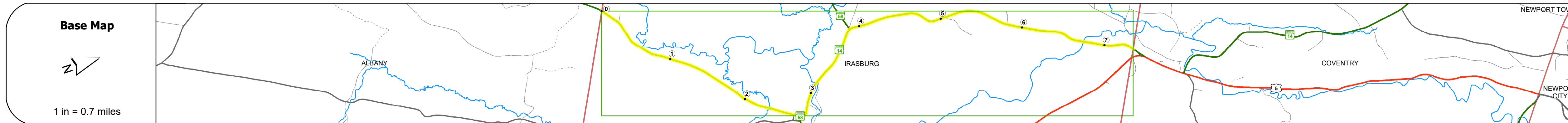
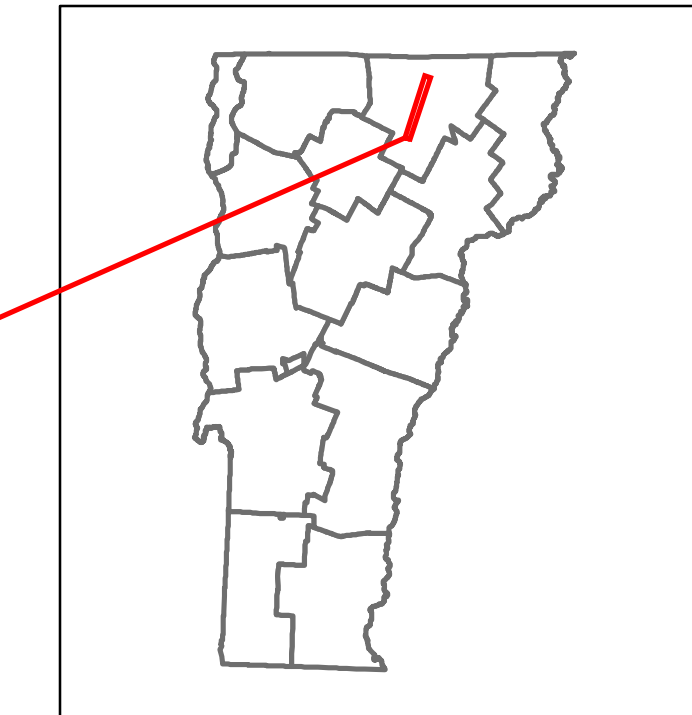


<b>DISTRICT</b>	<b>TOWN</b>	<b>ROUTE</b>
9	IRASBURG	VT-14



<b>Historic Projects</b>	<b>Functional Class</b>	<b>Crash Locations</b>	<b>Mileage by Functional Class By Sheet</b>	<b>Mileage by Town By Sheet</b>
Unknown, Retreatment, Resurface, Bituminous Mix, Skiny Mix, Bituminous Seal	1- Interstate System, 2- Other Freeways and Expressways, 3- Principal Arterial, 4- Minor Arterial, 5- Major Collector, 6- Minor Collector	Fatal, Injury, Property Damage Only, Unknown Crash Type	0251 5 - Major Collector 7.350	IRASBURG - V014-1011 7.35 of 7.35
Surface Treated Gravel, Cold Plane and Bituminous Concrete, Reclaimed Base and Bituminous Concrete, Concrete, Gravel	Speed Zones	High Crash Locations (HCL's)		
			<b>Page Total Mileage: 7.350 mi</b>	<b>Page Total Mileage: 7.35 mi</b>

### STRUCTURE DESCRIPTIONS

**Bridge 120:**  
Culvert - 1953  
Structure No. 300251012010111  
Length: 7'  
Under Clearance: 6.0'  
Weight Limit: 0  
Facility Carried: VT14  
Structure Type: RC PIPE  
Features Intersected: CATTLE PASS  
Inspection Date: 11/2021  
Maintenance: State

**Bridge 122:**  
Culvert - 1953  
Structure No. 300251012210111  
Length: 7'  
Under Clearance: 6.0'  
Weight Limit: 0  
Facility Carried: VT14  
Structure Type: RC PIPE  
Features Intersected: CATTLE PASS  
Inspection Date: 11/2021  
Maintenance: State

**Bridge 123:**  
Stringer/multi-beam or girder - 1938  
Structure No. 200251012310112  
Length: 84'  
Height: 100.0'  
Width: 25.0'  
Weight Limit: 0  
Facility Carried: VT 14 ML  
Structure Type: ROLLED BEAM  
Features Intersected: LORDS CREEK  
Surface: Bituminous  
Inspection Date: 6/2021  
Maintenance/Ownership: State

**Bridge 124:**  
Stringer/multi-beam or girder - 1939  
Structure No. 200251012410112  
Length: 85'  
Height: 100.0'  
Width: 26.0'  
Weight Limit: 0  
Facility Carried: VT 14 ML  
Structure Type: ROLLED BEAM  
Features Intersected: BLACK RIVER  
Surface: Bituminous  
Inspection Date: 6/2021  
Maintenance/Ownership: State

**Bridge 125:**  
Culvert - 1954  
Structure No. 300251012510111  
Length: 7'  
Under Clearance: 6.0'  
Weight Limit: 0  
Facility Carried: VT14  
Structure Type: RC PIPE  
Features Intersected: CATTLE PASS  
Inspection Date: 11/2021  
Maintenance: State

**Bridge 125A:**  
Culvert - 1919  
Structure No. 300251125A10111  
Length: 7'  
Under Clearance: 6.0'  
Weight Limit: 0  
Facility Carried: VT14  
Structure Type: RC PIPE  
Features Intersected: CATTLE PASS  
Inspection Date: 11/2021  
Maintenance: State

**Bridge 125B:**  
Culvert - 1919  
Structure No. 300251125B10111  
Length: 7'  
Under Clearance: 1.0'  
Weight Limit: 0  
Facility Carried: VT14  
Structure Type: RC PIPE  
Features Intersected: CATTLE PASS  
Inspection Date: 11/2021  
Maintenance: State

**Bridge 128:**  
Culvert - 1954  
Structure No. 300251012810111  
Length: 7'  
Under Clearance: 4.0'  
Weight Limit: 0  
Facility Carried: VT 14  
Structure Type: RC PIPE  
Features Intersected: CATTLE PASS  
Inspection Date: 11/2021  
Maintenance: State

**Bridge 129:**  
Stringer/multi-beam or girder - 2001  
Structure No. 200251012910112  
Length: 136'  
Height: 100.0'  
Width: 28.0'  
Weight Limit: 0  
Facility Carried: VT 14 ML  
Structure Type: WELDED PLATE GIRDER  
Features Intersected: BLACK RIVER  
Surface: Bituminous  
Inspection Date: 6/2021  
Maintenance/Ownership: State