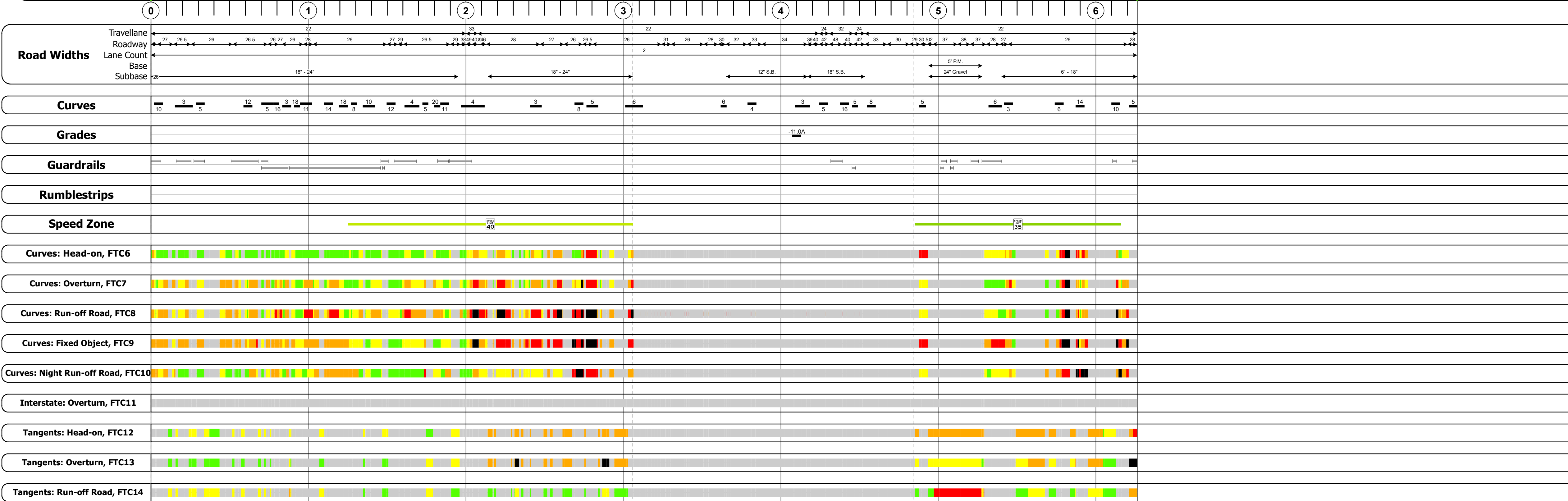
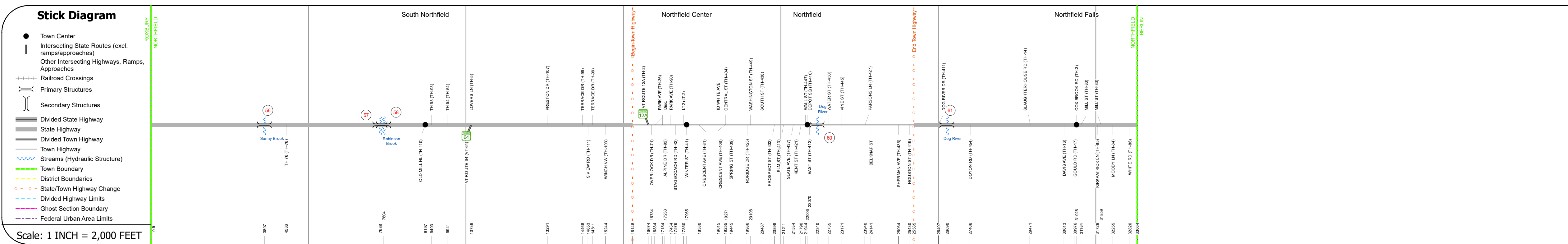
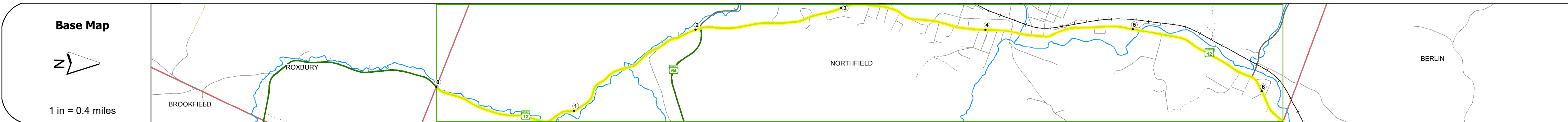
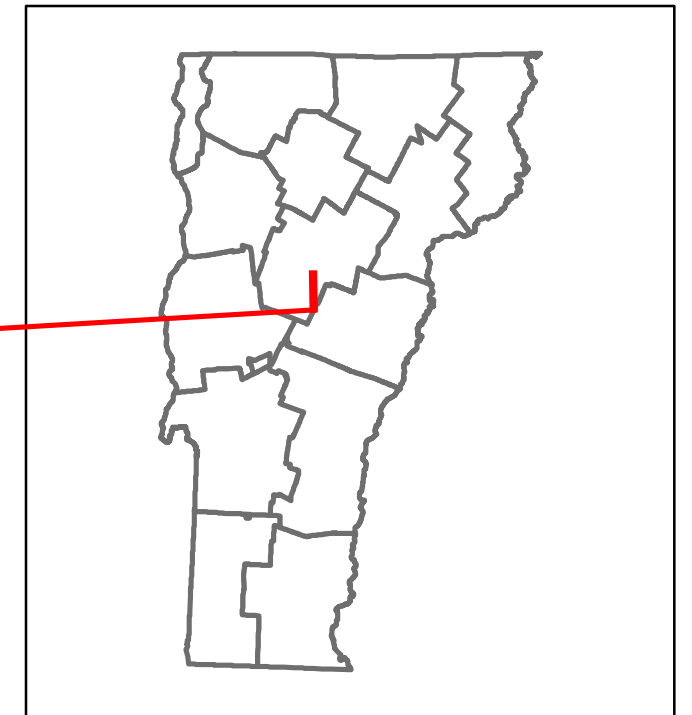


DISTRICT	TOWN	ROUTE
6	NORTHFIELD	VT-12



Risk	Primary Risk	High Risk	Medium Risk	Low Risk	Minimal Risk	Not a Focus Facility
2022	902	2573	4578	5490	4636	4347
2021	895	3171	3171	5446	4041	3050
2020	790	1103	3863	4807	3567	2892
2019	933	1302	4561	5675	4211	3178
2018	930	1100	4000	4900	4200	3700

### STRUCTURE DESCRIPTIONS

**Bridge 56:**  
Slab - 1918  
Structure No. 300241005612131  
Length: 20'  
Under Clearance: 7.0'  
Weight Limit: 0  
Facility Carried: VT12  
Structure Type: CONCRETE SLAB  
Features Intersected: SUNNY BROOK  
Surface: Bituminous  
Inspection Date: 10/2021  
Maintenance: State

**Bridge 57:**  
Slab - 1928  
Structure No. 300241005712131  
Length: 23'  
Width: 26.0'  
Weight Limit: 0  
Facility Carried: VT12  
Structure Type: CONCRETE SLAB  
Features Intersected: SUNNY BROOK  
Surface: Bituminous  
Inspection Date: 10/2021  
Maintenance: State

**Bridge 58:**  
Slab - 1928  
Structure No. 300241005812131  
Length: 23'  
Width: 26.0'  
Weight Limit: 0  
Facility Carried: VT12  
Structure Type: CONCRETE SLAB  
Features Intersected: ROBINSON BROOK  
Surface: Bituminous  
Inspection Date: 10/2021  
Maintenance: State

**Bridge 60:**  
Tee Beam - 1926  
Structure No. 200241006012132  
Length: 111'  
Height: 100.0'  
Width: 51.0'  
Weight Limit: 0  
Facility Carried: VT 12 ML  
Structure Type: 3 SP CONCRETE T-BEAM  
Features Intersected: DOG RIVER  
Surface: Bituminous  
Inspection Date: 4/2023  
Maintenance/Ownership: Town

**Bridge 61:**  
Stringer/multi-beam or girder - 1977  
Structure No. 200241006112132  
Length: 170'  
Height: 100.0'  
Width: 39.0'  
Weight Limit: 0  
Facility Carried: VT 12 ML  
Structure Type: 2 SP CONT ROLLED BM  
Features Intersected: DOG RIVER  
Surface: Bituminous  
Inspection Date: 7/2021  
Maintenance/Ownership: State

<b>Historic Projects</b> <ul style="list-style-type: none"> <li>Unknown</li> <li>Retreatment</li> <li>Resurface</li> <li>Bituminous Mix</li> <li>Skinny Mix</li> <li>Bituminous Seal</li> </ul>	<b>Functional Class</b> <ul style="list-style-type: none"> <li>1 - Interstate System</li> <li>2 - Other Freeways and Expressways</li> <li>3 - Principal Arterial</li> <li>4 - Minor Arterial</li> <li>5 - Major Collector</li> <li>6 - Minor Collector</li> </ul>	<b>Curves</b> <ul style="list-style-type: none"> <li>Left (degrees)</li> <li>Right (degrees)</li> </ul>	<b>Grades</b> <ul style="list-style-type: none"> <li>grade up (percent)</li> <li>grade down (percent)</li> </ul>	<b>Traffic Counters</b> <ul style="list-style-type: none"> <li>Continuous (CTC)</li> <li>Weight-In-Motion (WIM)</li> <li>Short-Term, Scheduled</li> <li>Short-Term, Unscheduled</li> </ul>	<b>Crash Locations</b> <ul style="list-style-type: none"> <li>Fatal</li> <li>Injury</li> <li>Property Damage Only</li> <li>Unknown Crash Type</li> </ul>	<b>Mileage by Functional Class By Sheet</b> 0241 5 - Major Collector 6.262	<b>Mileage by Town By Sheet</b> NORTHFIELD - V012-1213 6.262 of 6.262	<b>DISTRICT</b> 6	<b>TOWN</b> NORTHFIELD	<b>Date:</b> 02/14/24	<b>ROUTE</b> VT-12 ETE mileage: 45.441 to 51.703
--	--	--	---	---	---	---	--	----------------------	---------------------------	-----------------------	--