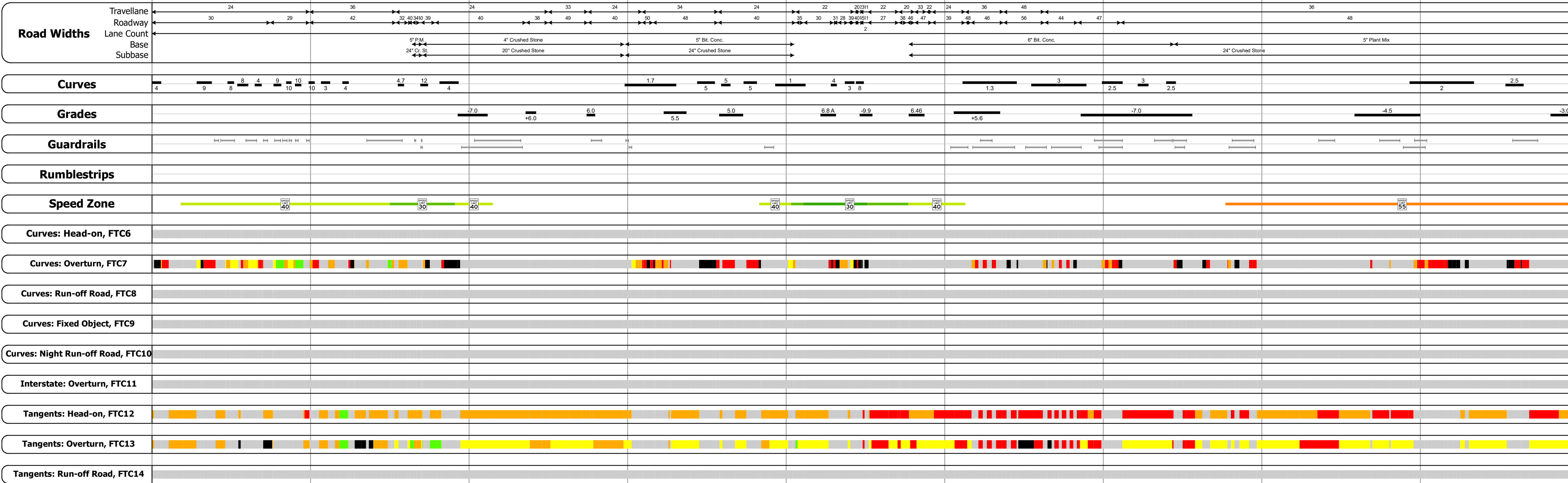
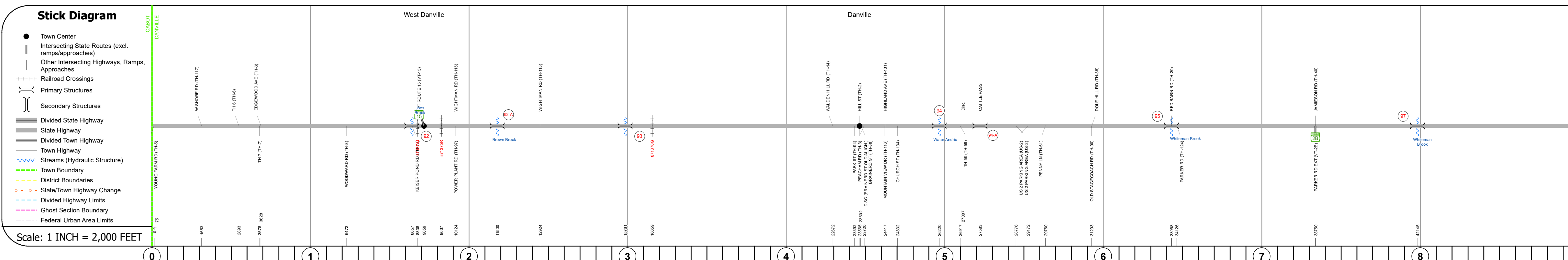
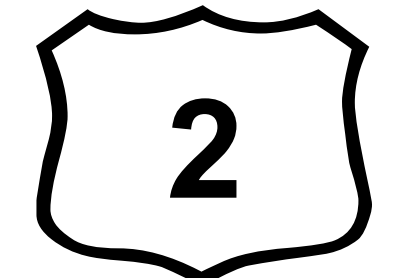
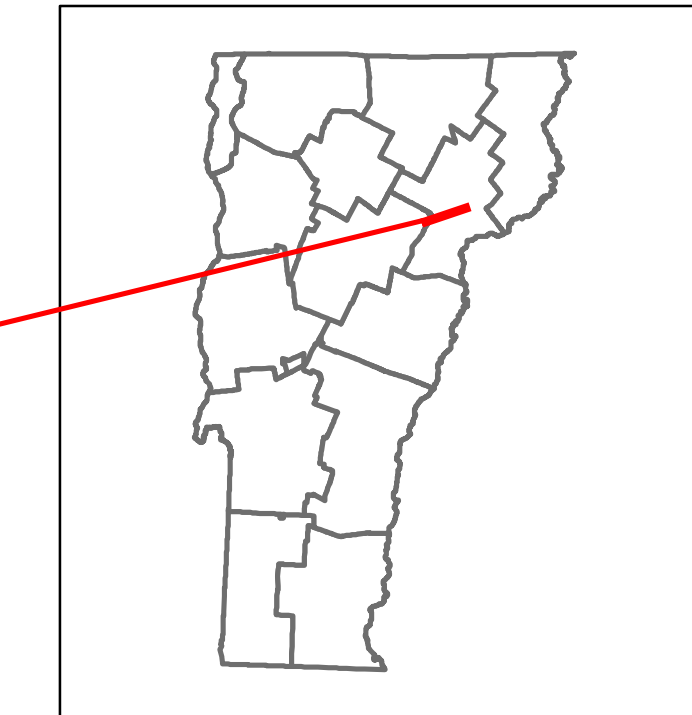


DISTRICT	TOWN	ROUTE
7	DANVILLE	US-2



Risk	Primary Risk	High Risk	Medium Risk	Low Risk	Minimal Risk	Not a Focus Facility
█	█	█	█	█	█	█

Year	Station 0-1	Station 1-2	Station 2-3	Station 3-4	Station 4-5	Station 5-6	Station 6-7	Station 7-8	Station 8-9
2022	4124		7376		7922		7157		8128
2021	4091		7317		7044		7044		8831
2020	3468		6056		6177		6177		7794
2019	4095		7150		7514		7514		9202
2018	4100	4300	5000			7500			7800

STRUCTURE DESCRIPTIONS

Bridge 92:
Stringer/multi-beam or girder - 1934
Structure No. 200028009203032
Length: 74'
Height: 100.0'
Width: 35.0'
Weight Limit: 0
Facility Carried: US 02 ML
Structure Type: ROLLED BEAM
Features Intersected: JOES BROOK
Surface: Bituminous
Inspection Date: 7/2021
Maintenance/Ownership: State

Bridge 92-A:
Culvert - 1960
Structure No. 30002802A03031
Length: 7'
Under Clearance: 7.0'
Weight Limit: 0
Facility Carried: US2
Structure Type: ACCMPP ALUM SLEEVED
Features Intersected: BROOK
Inspection Date: 9/2020
Maintenance: State

Bridge 93:
Culvert - 1958
Structure No. 300028009303031
Length: 7'
Under Clearance: 5.0'
Weight Limit: 0
Facility Carried: US2
Structure Type: CGMPPA
Features Intersected: BROWN BROOK
Inspection Date: 9/2020
Maintenance: State

Bridge 94:
Culvert - 1994
Structure No. 300028009403031
Length: 11'
Under Clearance: 7.0'
Weight Limit: 0
Facility Carried: US2
Structure Type: CGMPPA
Features Intersected: WATER ANDRIC BROOK
Inspection Date: 9/2020
Maintenance: State

Bridge 94-A:
Culvert - 1994
Structure No. 300028094A03031
Length: 12'
Under Clearance: 14.0'
Weight Limit: 0
Facility Carried: US2
Structure Type: RC BOX
Features Intersected: CATTLE PASS
Inspection Date: 9/2020
Maintenance: State

Bridge 95:
Culvert - 1986
Structure No. 300028009503031
Length: 9'
Under Clearance: 8.0'
Weight Limit: 0
Facility Carried: US2
Structure Type: CGMPP
Features Intersected: WHITEMAN BROOK
Inspection Date: 9/2020
Maintenance: State

Bridge 97:
Culvert - 1986
Structure No. 300028009703031
Length: 12'
Under Clearance: 12.0'
Weight Limit: 0
Facility Carried: US2
Structure Type: CGMPP W/ CONC INVERT
Features Intersected: WHITEMAN BROOK
Inspection Date: 9/2020
Maintenance: State

For More Information Contact - Vermont Agency of Transportation, Policy, Planning and Intermodal Development Division - Mapping Section, 219 North Main Street, Barre, VT 05641 Telephone: 802-828-2600.