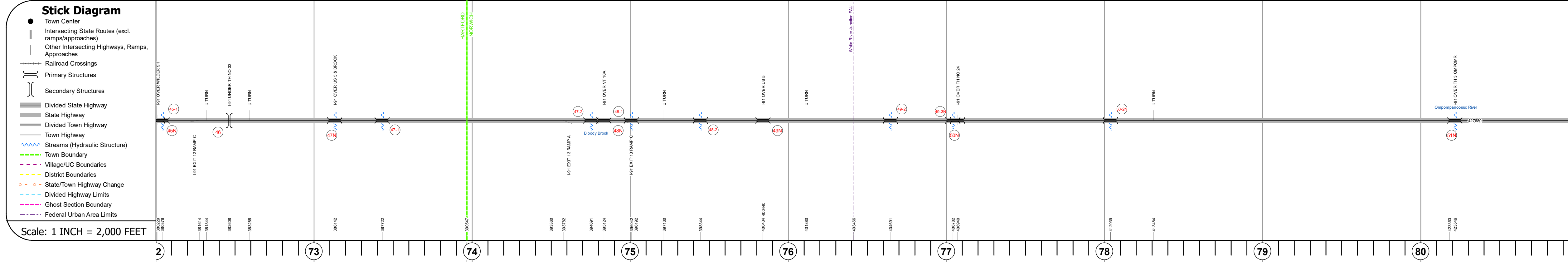
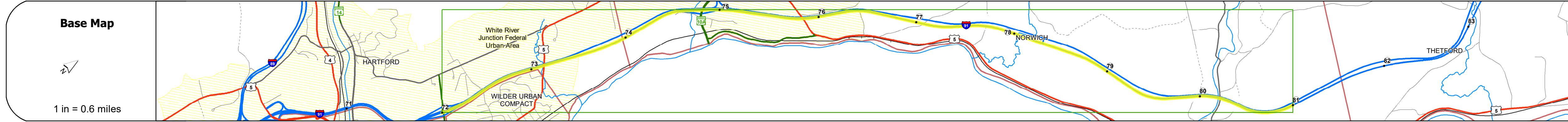
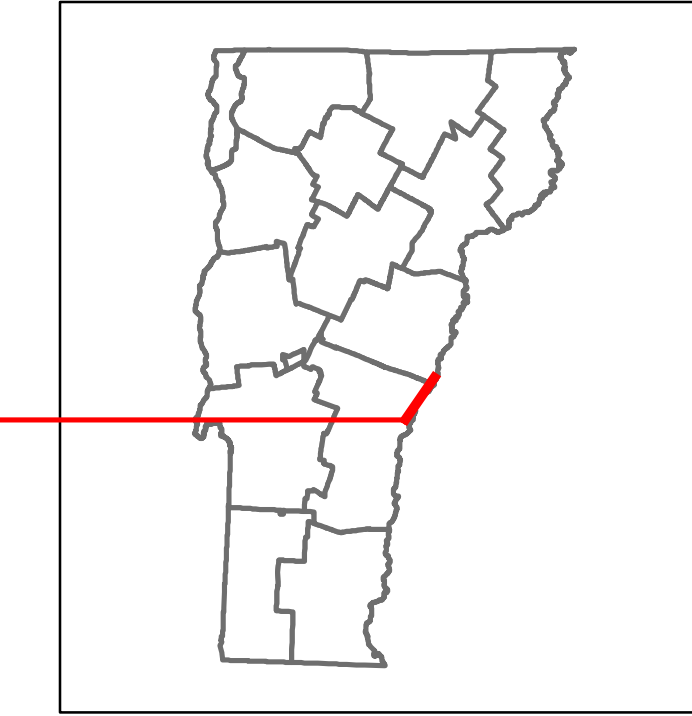


DISTRICT	TOWN	ROUTE
4	HARTFORD, NORWICH	I-91

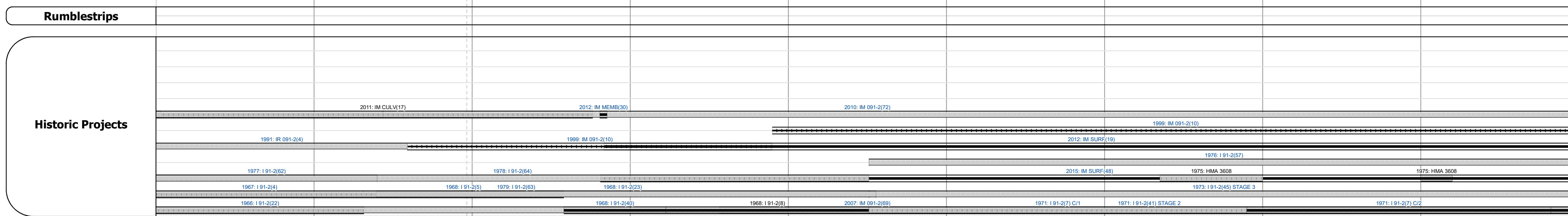


Road Widths	Travel Lane	Roadway Lane Count	Base	Subbase

Curves	Grades

Guardrails

Rumblestrips



Maintenance Garage
District 4 - DMF Maintenance White River Garage
District 4 - DMF Maintenance Theford Garage

Speed Zone
55

Functional Class
1

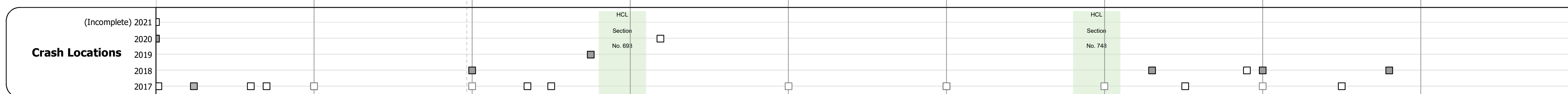
National Highway System
NHS - Interstate

Limited Access Highway
Full

Customer Service Level
Interstate Or Divided Highway

Traffic Counters
Y900
Y902

AADT	2020	2019	2018	2017	2016
1	5741	7655	7981	10641	18600
2				20100	
3				19400	
4					12200
5					12500
6					6346
7					5152
8					5152



STRUCTURE DESCRIPTIONS

Bridge 45N: Stringer/multi-beam or girder - 1967
Structure No. 200091045N14082
Length: 157'
Width: 37.3'
Under Clearance: 16.17'
Facility Carried: I91
Structure Type: 3 SP CONT ROLLED BM
Surface: Bituminous
Maintenance/Ownership: State

Bridge 45-1: Culvert - 1967
Structure No. 30009145-114081
Length: 7'
Under Clearance: 7.5'
Facility Carried: I91
Structure Type: CGMPP
Features Intersected: BROOK
Maintenance: State

Bridge 46: Stringer/multi-beam or girder - 1967
Structure No. 2014080D4614081
Length: 214'
Facility Carried: TR 33
Structure Type: 2 SP WELDED PLT GIR
Features Intersected: I91 UNDER TH NO 33

Bridge 47N: Stringer/multi-beam or girder - 1967
Structure No. 200091047N14082
Length: 197'
Width: 37.3'
Under Clearance: 17.25'
Facility Carried: I91
Structure Type: 3 SP CONT WLD PL GIR
Features Intersected: I91 OVER US 5 + BROOK
Maintenance/Ownership: State

Bridge 47-1: Culvert - 1968
Structure No. 30009147-114081
Length: 7'
Under Clearance: 7.5'
Facility Carried: I91
Structure Type: CGMPP
Features Intersected: BROOK
Maintenance: State

Bridge 47-2: Culvert (Arch) - 1968
Structure No. 20009147-214112
Length: 24'
Facility Carried: I91 ML
Structure Type: RC ARCH
Features Intersected: BLOODY BROOK
Maintenance/Ownership: State

Bridge 48N: Stringer/multi-beam or girder - 1968
Structure No. 200091048N14112
Length: 225'
Width: 37.3'
Under Clearance: 15.5'
Facility Carried: I91 ML
Structure Type: 3 SP CONT WLD PL GIR
Features Intersected: I91 OVER VT 10A
Surface: Bituminous
Maintenance/Ownership: State

Bridge 48-1: Culvert - 1968
Structure No. 30009148-114111
Length: 6'
Under Clearance: 6.0'
Facility Carried: I91
Structure Type: ACCGMPP
Features Intersected: BROOK
Maintenance: State

Bridge 48-2: Culvert - 1968
Structure No. 30009148-214111
Length: 6'
Under Clearance: 6.0'
Facility Carried: I91
Structure Type: ACCGMPP
Features Intersected: BROOK
Maintenance: State

Bridge 49N: Stringer/multi-beam or girder - 1968
Structure No. 200091049N14112
Length: 137'
Width: 37.3'
Under Clearance: 15.75'
Facility Carried: I91 ML
Structure Type: WELDED PLATE GIRDER
Features Intersected: I91 OVER US 5
Surface: Bituminous
Maintenance/Ownership: State

Bridge 49-2: Culvert - 1971
Structure No. 30009149-214111
Length: 6'
Under Clearance: 6.5'
Facility Carried: I91
Structure Type: CGMPP
Features Intersected: BROOK
Maintenance: State

Bridge 49-3N: Culvert - 1971
Structure No. 300091493N14111
Length: 6'
Under Clearance: 6.5'
Facility Carried: I91
Structure Type: CGMPP
Features Intersected: BROOK
Maintenance: State

Bridge 50N: Culvert - 1970
Structure No. 200091050N14112
Length: 21'
Under Clearance: 13.92'
Facility Carried: I91 ML
Structure Type: RC BOX
Features Intersected: I91 OVER TH NO 24
Maintenance/Ownership: State

Bridge 50-2N: Culvert - 1971
Structure No. 300091502N14111
Length: 9'
Under Clearance: 10.0'
Facility Carried: I91
Structure Type: CGMPP
Features Intersected: BROOK
Maintenance: State

Bridge 51N: Stringer/multi-beam or girder - 1970
Structure No. 200091051N14112
Length: 250'
Width: 38.4'
Under Clearance: 14.5'
Facility Carried: I91 ML
Structure Type: 2 SPAN WLD PL GIRDER
Features Intersected: I91 OVER TH 3 OMPOMR
Surface: Bituminous
Maintenance/Ownership: State

<p>Historic Projects</p> <ul style="list-style-type: none"> Unknown Retreatment Resurface Bituminous Mix Skinny Mix Bituminous Seal <p>Surface Treated</p> <ul style="list-style-type: none"> Gravel Cold Plane and Reclaimed Base and Bituminous Concrete <p>Speed Zones</p> <p>Indicated plans available - http://vtransmap01.ad.state.vt.us/rp/dpr/DIwebstore/</p>	<p>Functional Class</p> <ul style="list-style-type: none"> 1 - Interstate 2 - Other 3 - Principal Arterial 4 - Minor Arterial 5 - Major Collector 6 - Minor Collector <p>Curves</p> <ul style="list-style-type: none"> Left Right <p>Grades</p> <ul style="list-style-type: none"> grade up grade down <p>Road Widths</p> <p>(ft)</p>	<p>Traffic Counters</p> <ul style="list-style-type: none"> Continuous (CTC) Weight-In-Motion (WIM) Short-Term, Scheduled Short-Term, Unscheduled <p>Crash Locations</p> <p>High Crash Locations (HCL's)</p> <p>Sections (& Intersections)</p> <p>HCL No. 1 - 100 (1 - 10)</p> <p>HCL No. 201 - 300 (21 - 30)</p> <p>HCL No. 401 - 500 (41 - 50)</p> <p>HCL No. 601 - 800 (61 - 80)</p> <p>HCL No. 901 - 1000 (91 - 100)</p>	<p>Mileage by Functional Class By Sheet</p> <p>91-2 1 - Interstate 9.000</p>	<p>Mileage by Town By Sheet</p> <p>ETE - I091-0000 9.0 of 177.432</p>	<p>DISTRICT</p> <p>4</p>	<p>TOWN</p> <p>HARTFORD, NORWICH</p>	<p>Date: 11/22/21</p> <p>9 of 20</p> <p>TWN mileage: 72.0 to 81.0</p>	<p>ROUTE</p> <p>I-91</p> <p>ETE mileage: 72.0 to 81.0</p>
---	---	---	---	--	---------------------------------	---	--	--