

TOWN HWY. NO.	LENGTH IN MILES CLASS 3	LENGTH IN MILES CLASS 4
5	3.81	
7	2.96	
8	0.40	
9	1.32	
10	0.46	
11	1.29	
12	2.33	
13	3.22	
14	1.28	
15	0.38	(1.31)
16	0.66	(0.60)
17	2.38	
18	0.80	
20	0.50	
21		(0.70)
22	1.94	
23	1.45	
24	0.14	
25	0.83	
26	0.10	
27	0.15	
28	0.15	
29	0.51	
30	0.30	
32	0.44	
33	0.15	
34	0.24	
35	3.03	
36	2.36	
37	0.68	(1.31)
38	3.57	(0.07)
39		(0.70)
41	0.71	
42	1.05	
43	0.41	(0.49)
44	0.18	
45	0.80	
46	0.65	(1.30)
46		(0.18)
47	2.33	
48	1.19	
49	2.40	
50	0.10	
51	0.42	(0.44)
52	0.20	(0.06)
53	0.20	(0.59)
54	0.31	(1.21)
55	0.28	(0.14)
<b>TOTAL</b>	<b>55.79</b>	<b>9.76</b>

\* This portion of town highway is Class 3, but is functionally Class 4

**MILEAGE SUMMARY**

CLASS	LENGTH IN MILES
CLASS 2	15.410
CLASS 3	55.790
<b>TOTAL CLASS 3</b>	<b>55.790</b>
<b>TOTAL TOWN</b>	<b>71.200</b>

STATE HIGHWAY	LENGTH IN MILES
VT-14	9.121
VT-107	2.530
VT-110	2.320
<b>TOTAL STATE HIGHWAY</b>	<b>13.971</b>
<b>TOTAL STATE</b>	<b>13.971</b>

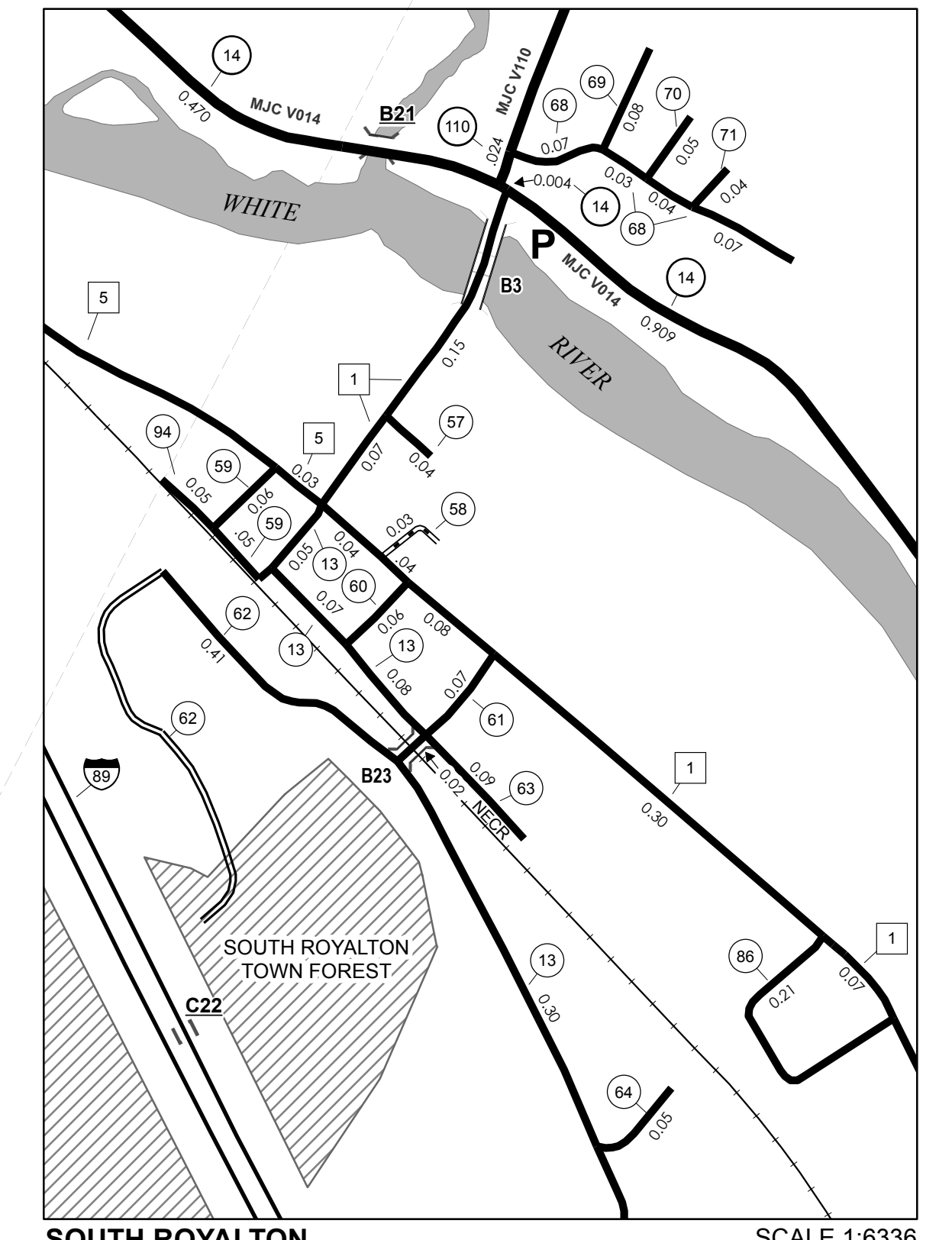
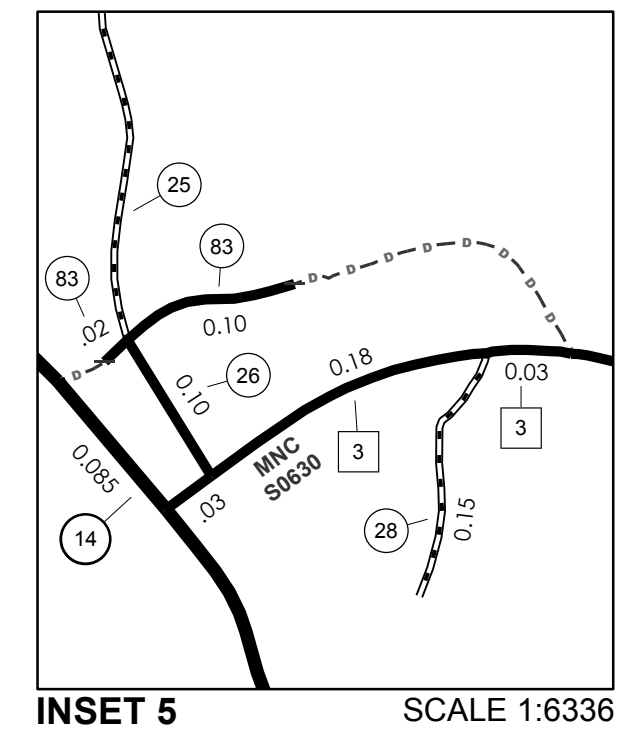
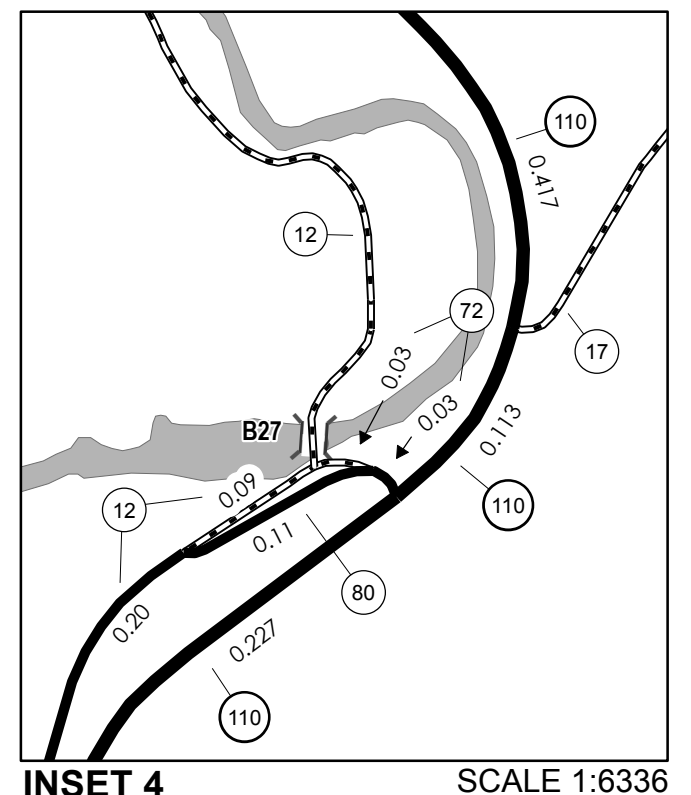
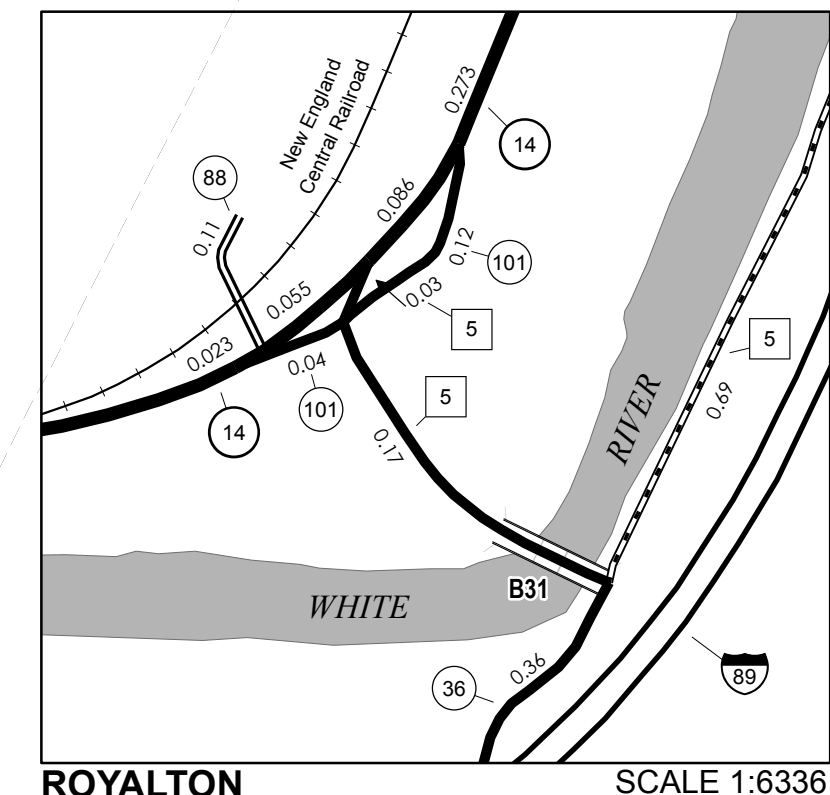
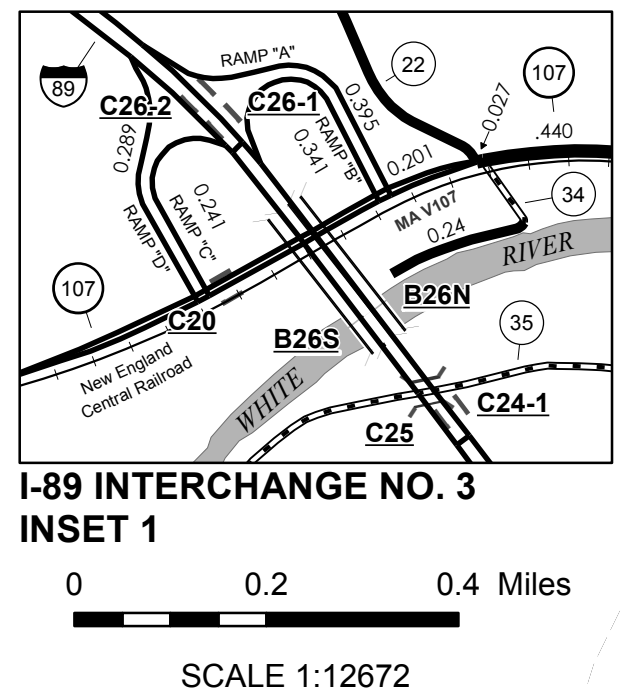
  

INTERSTATE	LENGTH IN MILES
I-89	7.720
<b>TOTAL INTERSTATE</b>	<b>7.720</b>

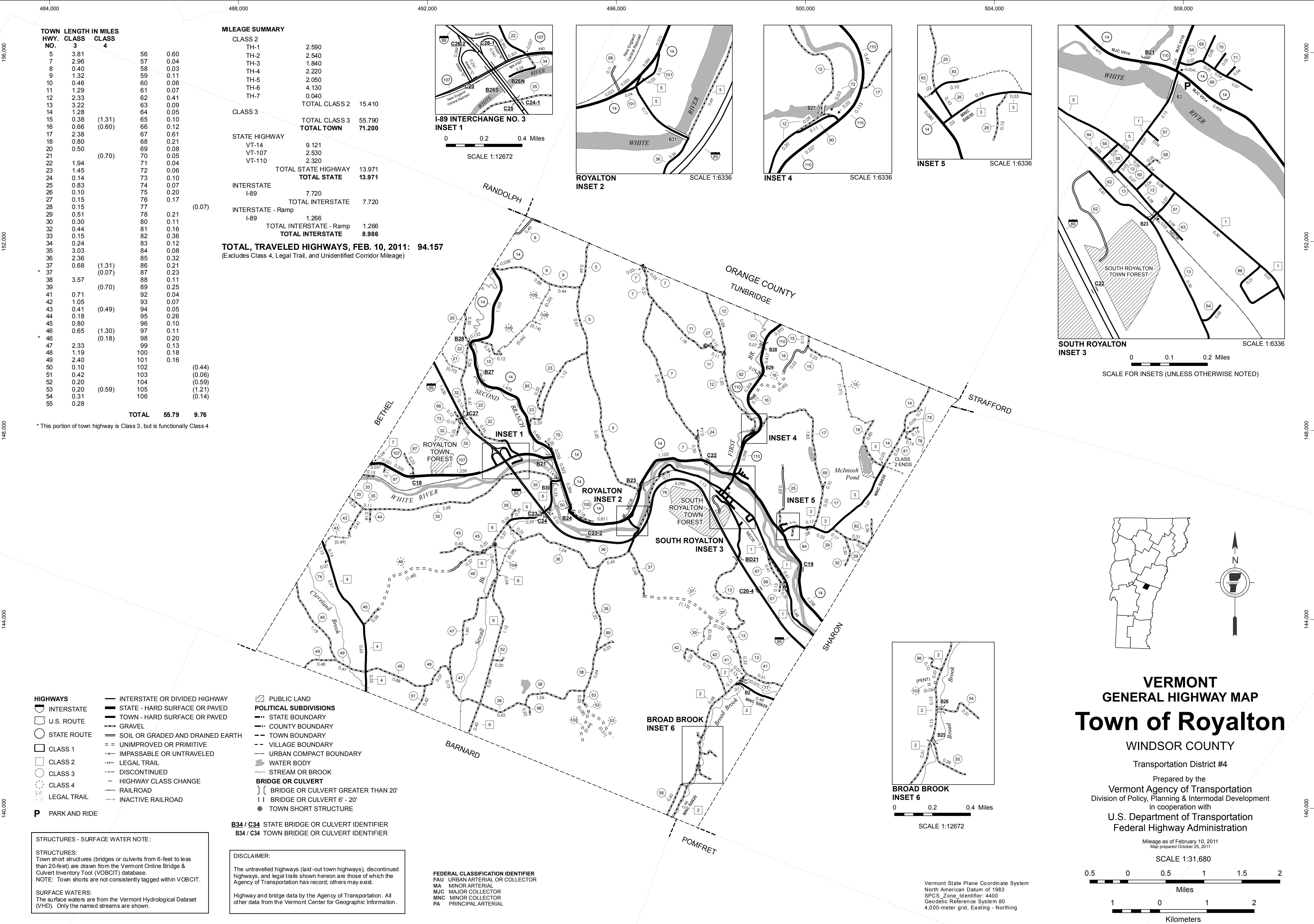
  

INTERSTATE - Ramp	LENGTH IN MILES
I-89	1.266
<b>TOTAL INTERSTATE - Ramp</b>	<b>1.266</b>
<b>TOTAL INTERSTATE</b>	<b>8.986</b>

**TOTAL, TRAVELED HIGHWAYS, FEB. 10, 2011: 94.157**  
(Excludes Class 4, Legal Trail, and Unidentified Corridor Mileage)



SCALE FOR INSETS (UNLESS OTHERWISE NOTED)



- HIGHWAYS**
- INTERSTATE OR DIVIDED HIGHWAY
  - STATE - HARD SURFACE OR PAVED
  - TOWN - HARD SURFACE OR PAVED
  - GRAVEL
  - SOIL OR GRADED AND DRAINED EARTH
  - UNIMPROVED OR PRIMITIVE
  - IMPASSABLE OR UNTRAVELED
  - LEGAL TRAIL
  - DISCONTINUED
  - HIGHWAY CLASS CHANGE
  - RAILROAD
  - INACTIVE RAILROAD
- P** PARK AND RIDE

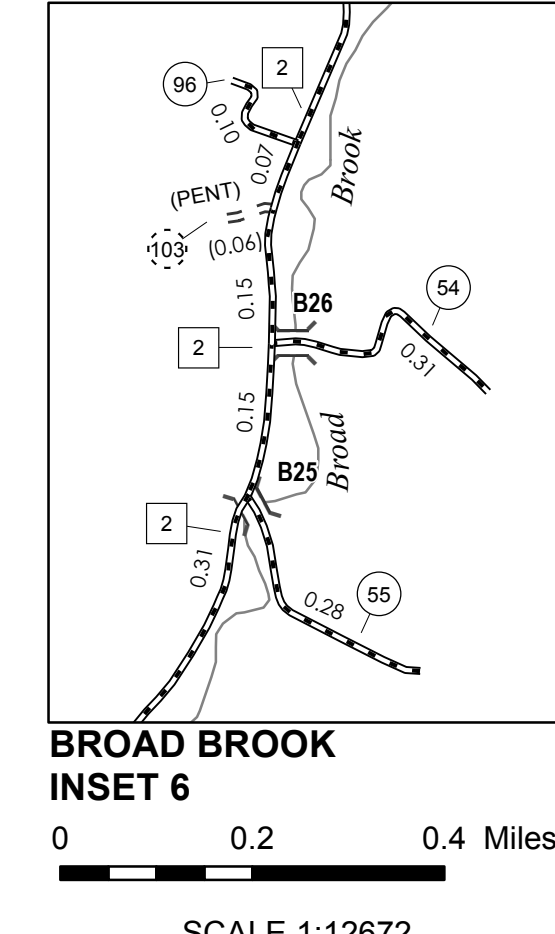
- POLITICAL SUBDIVISIONS**
- STATE BOUNDARY
  - COUNTY BOUNDARY
  - TOWN BOUNDARY
  - VILLAGE BOUNDARY
  - URBAN COMPACT BOUNDARY
  - WATER BODY
  - STREAM OR BROOK
- BRIDGE OR CULVERT**
- BRIDGE OR CULVERT GREATER THAN 20'
  - BRIDGE OR CULVERT 6' - 20'
  - TOWN SHORT STRUCTURE

**B34 / C34** STATE BRIDGE OR CULVERT IDENTIFIER  
**B34 / C34** TOWN BRIDGE OR CULVERT IDENTIFIER

**DISCLAIMER:**  
The untraveled highways (laid-out town highways), discontinued highways, and legal trails shown hereon are those of which the Agency of Transportation has record; others may exist.  
Highway and bridge data by the Agency of Transportation. All other data from the Vermont Center for Geographic Information.

**FEDERAL CLASSIFICATION IDENTIFIER**  
FAU URBAN ARTERIAL OR COLLECTOR  
MA MINOR ARTERIAL  
MJC MAJOR COLLECTOR  
MNC MINOR COLLECTOR  
PA PRINCIPAL ARTERIAL

**STRUCTURES - SURFACE WATER NOTE:**  
**STRUCTURES:**  
Town short structures (bridges or culverts from 6-feet to less than 20-feet) are drawn from the Vermont Online Bridge & Culvert Inventory Tool (VOBCIT) database.  
NOTE: Town shorts are not consistently tagged within VOBCIT.  
**SURFACE WATERS:**  
The surface waters are from the Vermont Hydrological Dataset (VHD). Only the named streams are shown.



**VERMONT GENERAL HIGHWAY MAP**  
**Town of Royalton**  
WINDSOR COUNTY  
Transportation District #4

Prepared by the  
Vermont Agency of Transportation  
Division of Policy, Planning & Intermodal Development  
in cooperation with  
U.S. Department of Transportation  
Federal Highway Administration

Mileage as of February 10, 2011  
Map prepared October 25, 2011

SCALE 1:31,680

0.5 0 0.5 1 1.5 2 Miles  
1 0 1 2 Kilometers

Vermont State Plane Coordinate System  
North American Datum of 1983  
SPCS\_Zone\_Identifier: 4400  
Geodetic Reference System 80  
4,000-meter grid, Easting - Northing