

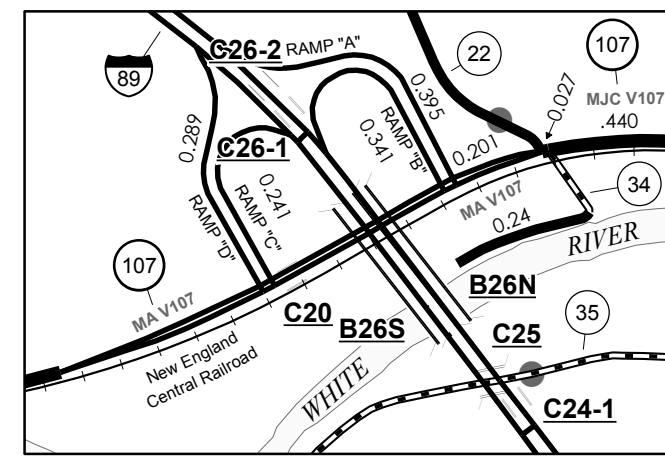
TOWN LENGTH IN MILES	HWY. CLASS	CLASS	NO.	3	4
5	3.81		55	0.28	
7	2.96		56	0.60	
8	0.40		57	0.04	
9	1.32		58	0.03	
10	0.46		59	0.11	
11	1.29		60	0.06	
12	2.33		61	0.07	
13	3.22		62	0.41	
14	1.28		63	0.09	
15	0.38	(1.31)	64	0.05	
16	0.66	(0.60)	65	0.10	
17	2.38		66	0.12	
18	0.80		67	0.61	
20	0.50		68	0.21	
21		(0.70)	69	0.08	
22	1.94		70	0.05	
23	1.45		71	0.04	
24	0.14		72	0.06	
25	0.83		73	0.10	
26	0.10		74	0.07	
27	0.15		75	0.20	
28	0.15		76	0.17	
29	0.51		77		(0.07)
30	0.30		78	0.21	
32	0.44		80	0.11	
33	0.15		81	0.16	
34	0.24		82	0.36	
35	3.03		83	0.12	
36	2.36		84	0.08	
37	0.68	(1.31)	85	0.32	
37		(0.07)	86	0.21	
38	3.57		87	0.23	
39		(0.70)	88	0.11	
41	0.71		89	0.25	
42	1.05		92	0.04	
43	0.41	(0.49)	93	0.07	
44	0.18		94	0.05	
45	0.80		95	0.26	
46	0.65	(1.30)	96	0.10	
46		(0.18)	97	0.11	
47	2.33		98	0.20	
48	1.19		99	0.13	
49	2.40		100	0.18	
50	0.10		101	0.16	
51	0.42		102		(0.44)
52	0.20		103		(0.06)
53	0.20	(0.59)	104		(0.59)
54	0.31		105		(1.21)
<b>TOTAL</b>				<b>55.79</b>	<b>9.62</b>

\* This portion of town highway is Class 3, but is functionally Class 4

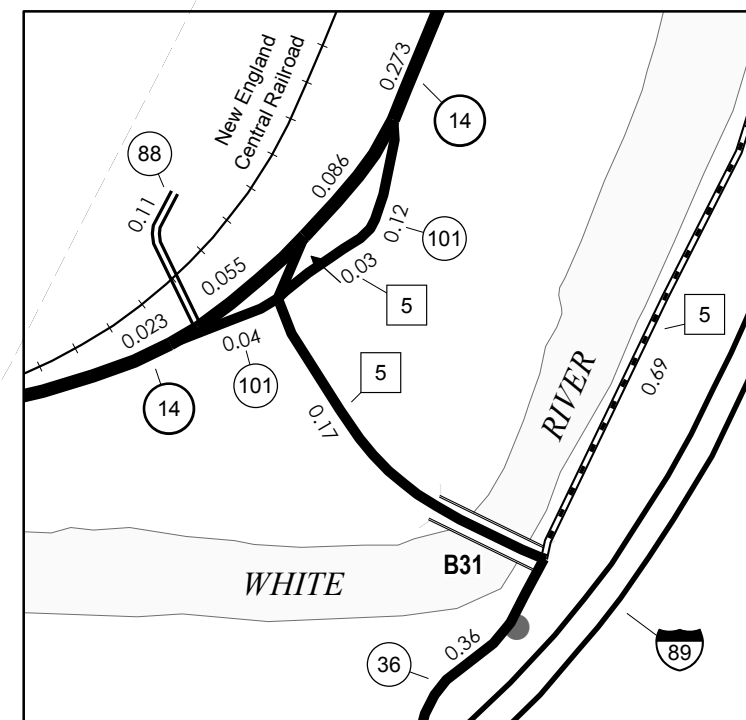
**MILEAGE SUMMARY**

<b>CLASS 2</b>			
TH-1	2,590		
TH-2	2,540		
TH-3	1,840		
TH-4	2,220		
TH-5	2,050		
TH-6	4,130		
TH-7	0,040		
	<b>TOTAL CLASS 2</b>	<b>15,410</b>	
<b>CLASS 3</b>			
	<b>TOTAL CLASS 3</b>	<b>55,790</b>	
	<b>TOTAL TOWN</b>	<b>71,200</b>	
<b>STATE HIGHWAY</b>			
VT-14	9,121		
VT-107	2,530		
VT-110	2,320		
	<b>TOTAL STATE HIGHWAY</b>	<b>13,971</b>	
	<b>TOTAL STATE</b>	<b>13,971</b>	
<b>INTERSTATE</b>			
I-89	7,720		
	<b>TOTAL INTERSTATE</b>	<b>7,720</b>	
<b>INTERSTATE - Ramp</b>			
I-89	1,266		
	<b>TOTAL INTERSTATE - Ramp</b>	<b>1,266</b>	
	<b>TOTAL INTERSTATE</b>	<b>8,986</b>	

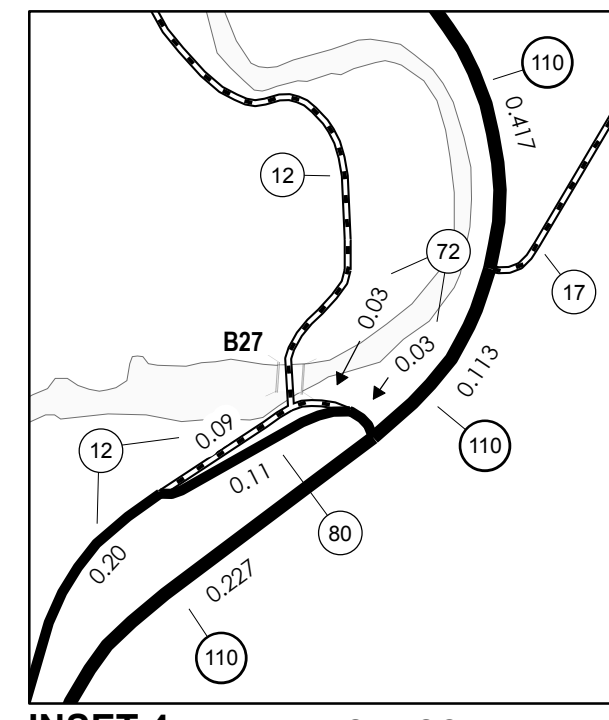
**TOTAL, TRAVELED HIGHWAYS, FEB. 10, 2010: 94.157**  
(Excludes Class 4 and Legal Trail Mileage)



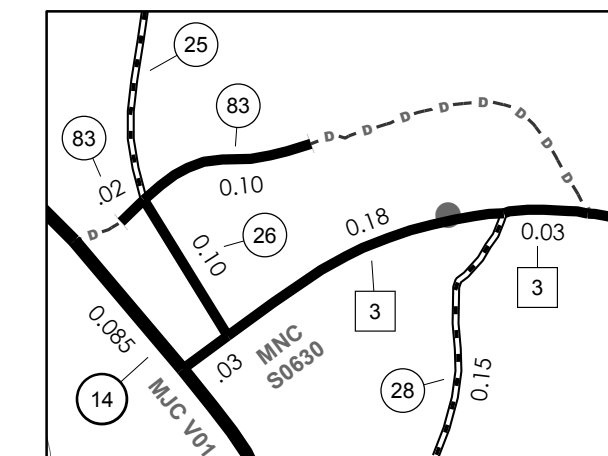
**I-89 INTERCHANGE NO. 3**  
**INSET 1**  
0 0.2 0.4 Miles  
INSET SCALE 1:12672



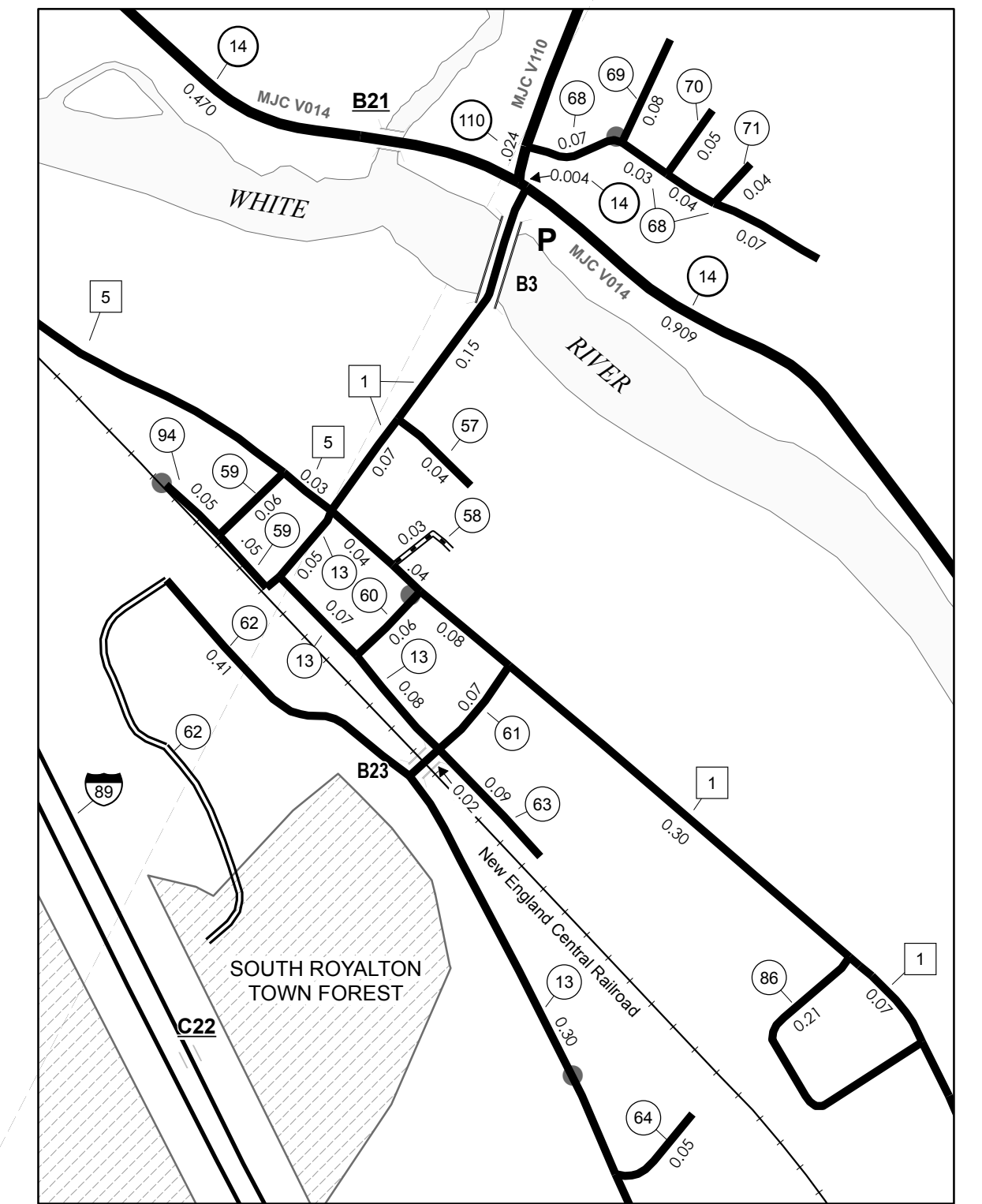
**ROYALTON**  
**INSET 2**  
INSET SCALE 1:6336



**INSET 4**  
INSET SCALE 1:6336

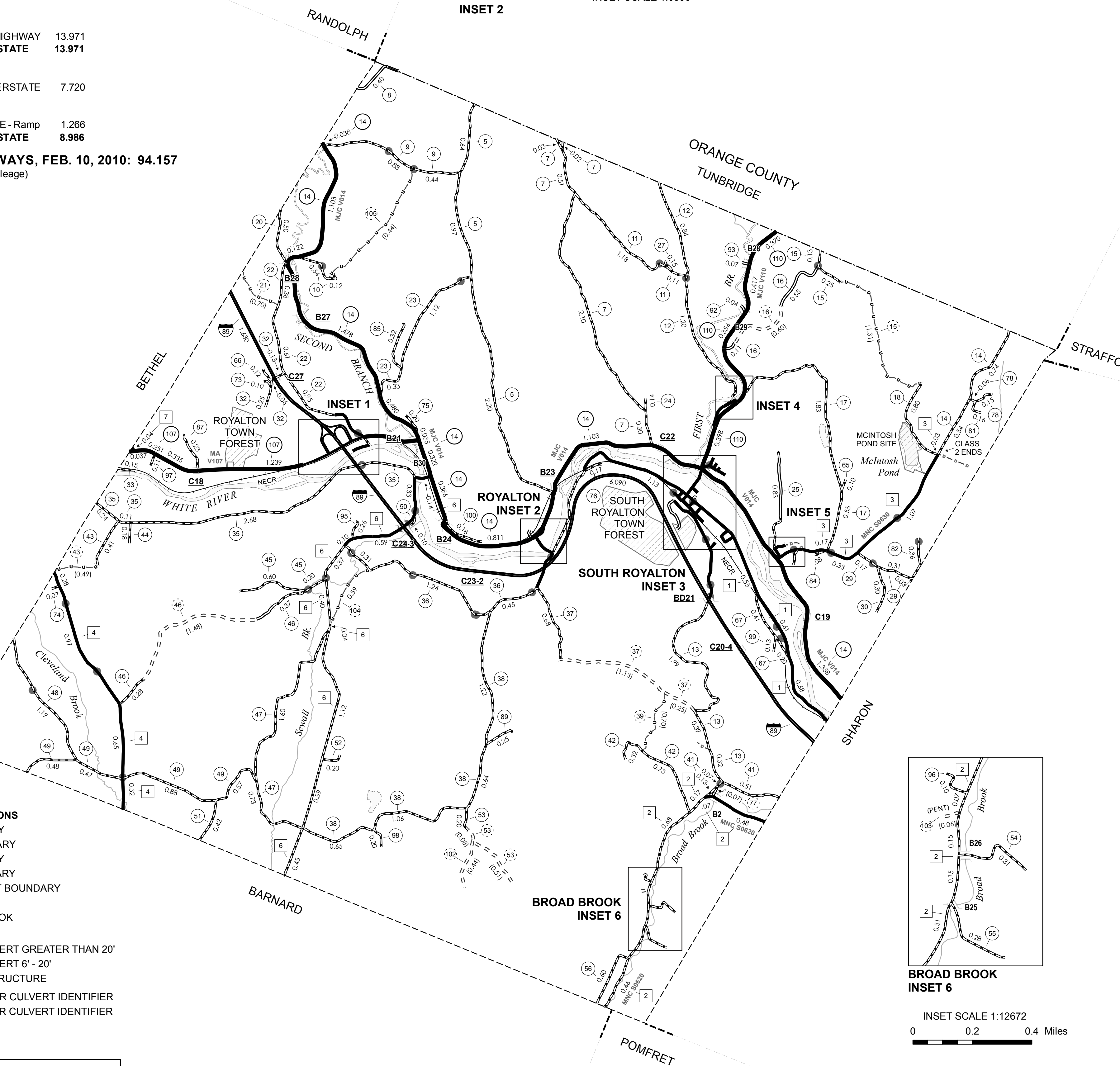


**INSET 5**  
INSET SCALE 1:6336

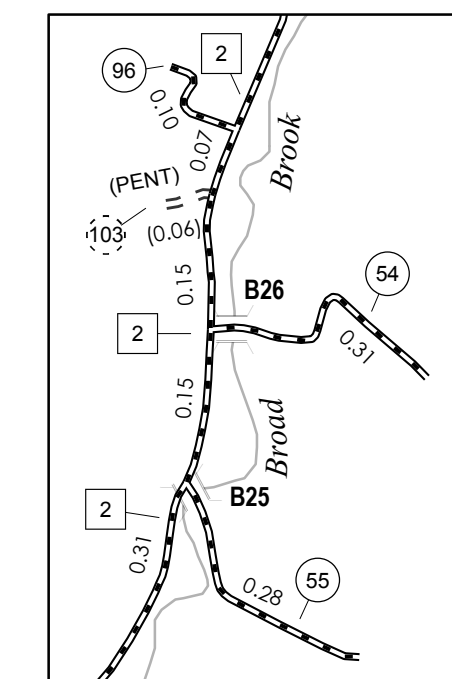


**SOUTH ROYALTON**  
**INSET 3**  
INSET SCALE 1:6336

0 0.1 0.2 Miles  
SCALE FOR INSETS 1:6336 (UNLESS OTHERWISE NOTED)



- HIGHWAYS**
- INTERSTATE OR DIVIDED HIGHWAY
  - STATE - HARD SURFACE OR PAVED
  - TOWN - HARD SURFACE OR PAVED
  - GRAVEL
  - SOIL OR GRADED AND DRAINED EARTH
  - UNIMPROVED OR PRIMITIVE
  - IMPASSABLE OR UNTRAVELED
  - LEGAL TRAIL
  - DISCONTINUED
  - HIGHWAY CLASS CHANGE
  - RAILROAD
- POLITICAL SUBDIVISIONS**
- STATE BOUNDARY
  - COUNTY BOUNDARY
  - TOWN BOUNDARY
  - VILLAGE BOUNDARY
  - URBAN COMPACT BOUNDARY
  - WATER BODIES
  - STREAM OR BROOK
- BRIDGE OR CULVERT**
- BRIDGE OR CULVERT GREATER THAN 20'
  - BRIDGE OR CULVERT 6' - 20'
  - TOWN SHORT STRUCTURE
- STRUCTURES - SURFACE WATER NOTE:**
- STRUCTURES:**  
Town short structures (bridges or culverts from 6-feet to less than 20-feet) are drawn from the Vermont Online Bridge & Culvert Inventory Tool (VOBCIT) database.  
NOTE: Town shorts are not consistently tagged within VOBCIT.
- SURFACE WATERS:**  
The surface waters are from the Vermont Hydrological Dataset (VHD). Only the named streams are shown.
- DISCLAIMER:**  
The untraveled highways (laid-out town highways), discontinued highways, and legal trails shown hereon are those of which the Agency of Transportation has record; others may exist.  
Highway and bridge data by the Agency of Transportation. All other data from the Vermont Center for Geographic Information.
- FEDERAL CLASSIFICATION IDENTIFIER**
- FAU URBAN ARTERIAL OR COLLECTOR
  - MA MINOR ARTERIAL
  - MJC MAJOR COLLECTOR
  - MNC MINOR COLLECTOR
  - PA PRINCIPAL ARTERIAL
- B34 / C34 STATE BRIDGE OR CULVERT IDENTIFIER**  
**B34 / C34 TOWN BRIDGE OR CULVERT IDENTIFIER**



**BROAD BROOK**  
**INSET 6**

0 0.2 0.4 Miles  
INSET SCALE 1:12672

**VERMONT**  
**GENERAL HIGHWAY MAP**  
**Town of Royalton**

WINDSOR COUNTY  
Transportation District #4  
Prepared by the  
Vermont Agency of Transportation  
Division of Planning, Outreach  
and Community Affairs  
in cooperation with  
U.S. Department of Transportation  
Federal Highway Administration

Mileage as of February 10, 2010  
Map prepared June 30, 2010  
SCALE 1:31,680  
0.5 0 0.5 1 1.5 2  
Miles  
1 0 1 2  
Kilometers

Vermont State Plane Coordinate System  
North American Datum of 1983  
SPCS\_Zone\_Identifier: 4400  
Geodetic Reference System 80  
4,000-meter grid, Easting - Northing