

TOWN HWY. No.	LENGTH IN MILES "NOT UP TO STANDARD"	LEGAL TRAIL No.	LENGTH IN MILES LEGAL TRAIL
23	(0.36)	1	(0.23)
TOTAL	0.36	2	(0.22)
		3	(0.06)
		TOTAL	0.51

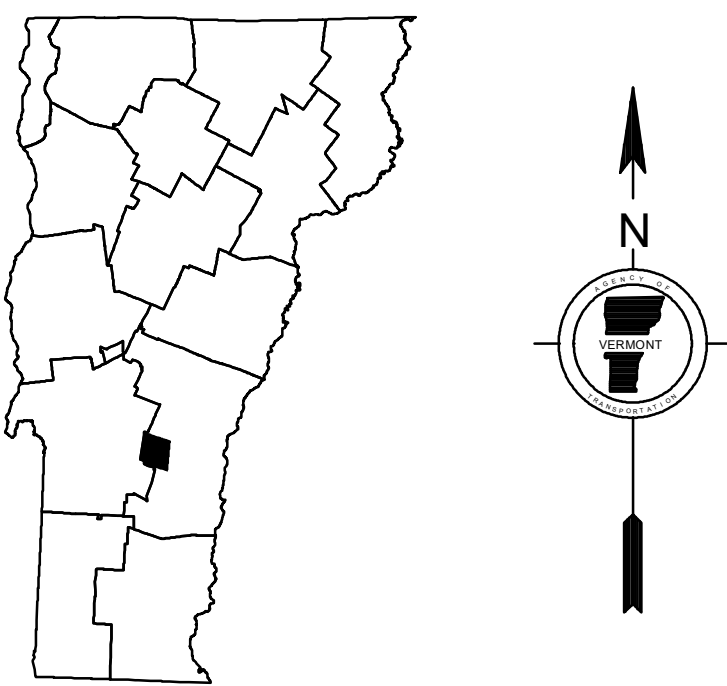
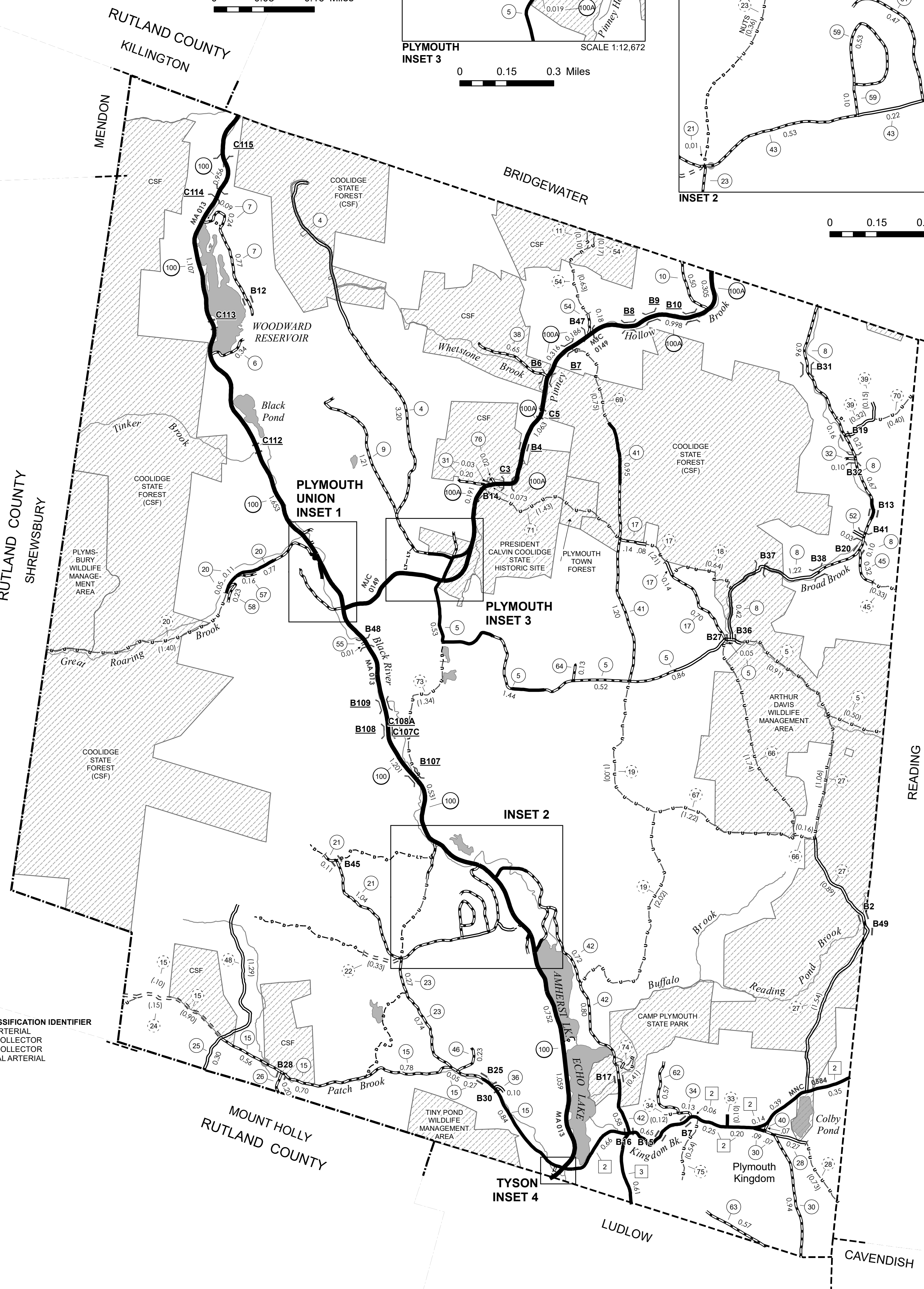
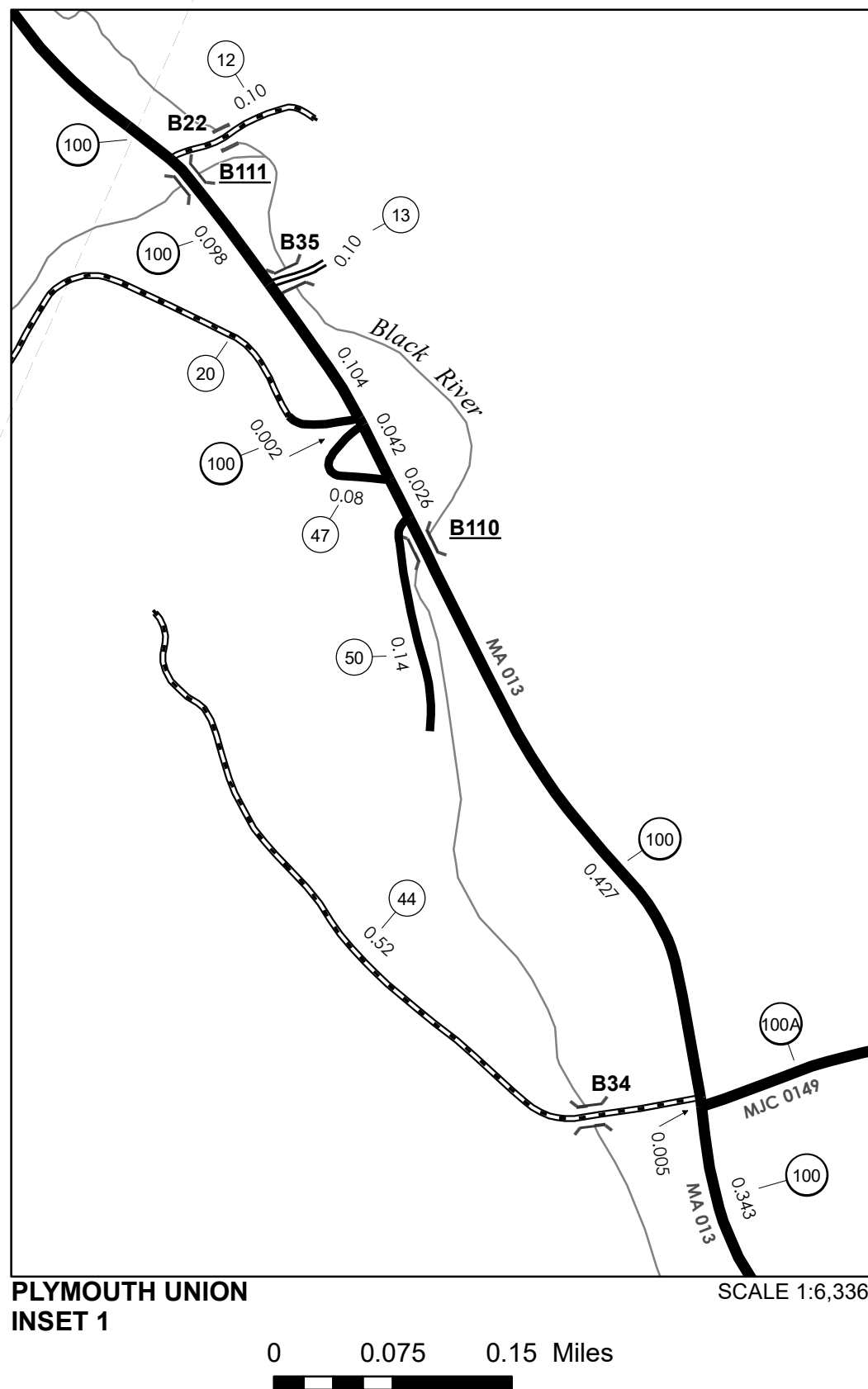
* The sections of the town highways listed above are legally Class 3, but have been

TOTAL, TRAVELED HIGHWAYS, FEB. 10, 2025: 55.098
(Excludes Class 4 and Legal Trail Mileage)

- B34 / C34** STATE BRIDGE OR CULVERT IDENTIFIER
B34 / C34 TOWN BRIDGE OR CULVERT IDENTIFIER

Highway and bridge data by the Agency of Transportation. Town short structures drawn from the VTCULVERTS (formerly VOBCIT) online database. All other data from the Vermont Open Geodata Portal. Only named streams shown.

Vermont State Plane Coordinate System
North American Datum of 1983
SPCS_Zone_Identifier: 4400
Geodetic Reference System 80
4,000-meter grid, Easting - Northing



WINDSOR COUNTY

Transportation District #3

Prepared by the
Vermont Agency of Transportation
 Division of Policy, Planning and Intermodal Development
 in cooperation with
U.S. Department of Transportation
Federal Highway Administration

Mileage as of February 10, 2025
Map prepared September 18, 2025

SCALE 1:31,680

