

TOWN HWY. No.	LENGTH IN MILES CLASS 3	LENGTH IN MILES CLASS 4
5	5.70	
6	0.19	
7	0.58	
8	1.14	(0.70)
11	0.54	(0.48)
12	0.59	
13	0.15	(0.59)
14	1.84	(0.06)
15		(0.15)
17		(1.11)
18	0.50	(0.47)
19		(0.14)
20	0.30	
21	0.10	
22	0.07	
23	1.09	
24	0.95	(0.25)
25	0.27	
26	1.83	(1.58)
27	0.30	
28	1.45	
29	1.35	
30	0.42	
31	0.26	
32	0.23	(1.93)
33	1.43	
36	0.33	
37	2.23	
38	0.75	
39	1.98	
40	0.05	
43		(1.65)
44	0.20	(0.83)
45		(0.70)
46		(0.60)
47	3.09	(1.60)
48	0.08	(3.32)
49	0.09	
50	0.33	(0.96)
51	0.40	
52		(1.70)
54		(0.16)
55		(0.10)
56	2.56	(1.17)
57	1.10	(0.53)
58		(0.38)
60		(1.21)
61	2.65	
62	1.65	
63	1.25	
64	1.00	
66		(0.08)
68	0.32	(0.03)
70	0.19	
72	0.37	
73		(1.05)
74	0.24	
75	0.34	(0.22)
79	0.24	
80		(0.03)
81	0.07	
85		(0.74)
86		(1.24)
87		(1.16)
88		(0.84)
89		(1.22)
90		(1.17)
93		(2.68)
94		(0.97)
95		(1.34)
96		(0.51)
97		(0.26)
98		(0.66)
99		(0.57)
101		(1.25)
102		(0.55)
103		(0.38)
104		(1.25)
105		(0.88)
106		(0.24)
107		(0.61)
108		(0.37)
<b>TOTAL</b>	<b>42.59</b>	<b>42.67</b>

**MILEAGE SUMMARY**

CLASS 2	LENGTH	TOTAL CLASS 2
TH-1	3.940	
TH-2	6.140	
TH-3	3.950	
TH-4	1.610	
<b>TOTAL CLASS 2</b>		<b>15.640</b>

CLASS 3	LENGTH	TOTAL CLASS 3
STATE HIGHWAY VT-12	9.615	
<b>TOTAL CLASS 3</b>		<b>42.59</b>

STATE HIGHWAY	LENGTH	TOTAL STATE HIGHWAY
VT-12	9.615	
<b>TOTAL STATE HIGHWAY</b>		<b>9.615</b>

**TOTAL, TRAVELED HIGHWAYS, FEB. 10, 2019: 67.845**  
(Excludes Class 4 and Legal Trail Mileage)

TOWN HWY. No.	LENGTH IN MILES "NOT UP TO STANDARD"
8	(0.16)
9	(0.06)
30	(0.15)
49	(0.22)
<b>TOTAL</b>	<b>0.59</b>

\* The sections of the town highways listed above are legally Class 3, but have been deemed "Not Up To Standard" and are functionally Class 4 Town Highways

LEGAL TRAIL No.	LENGTH IN MILES LEGAL TRAIL
1	(0.01)
2	(0.16)
3	(0.43)
4	(1.85)
<b>TOTAL</b>	<b>2.45</b>

**HIGHWAYS**

- INTERSTATE
- U.S. ROUTE
- STATE ROUTE
- CLASS 1
- CLASS 2
- CLASS 3
- CLASS 4
- LEGAL TRAIL
- PARK AND RIDE

**INTERSTATE OR DIVIDED HIGHWAY**

**STATE - HARD SURFACE OR PAVED**

**TOWN - HARD SURFACE OR PAVED**

**GRAVEL**

**SOIL OR GRADED AND DRAINED EARTH**

**UNIMPROVED OR PRIMITIVE**

**IMPASSABLE OR UNTRAVELED**

**LEGAL TRAIL**

**DISCONTINUED**

**HIGHWAY CLASS CHANGE**

**RAILROAD**

**INACTIVE RAILROAD**

**PUBLIC LAND - NATIONAL FOREST**

**PUBLIC LAND - STATE/MUNICIPAL**

**NFR NATIONAL FOREST ROAD**

**SFH STATE FOREST HIGHWAY**

**POLITICAL SUBDIVISIONS**

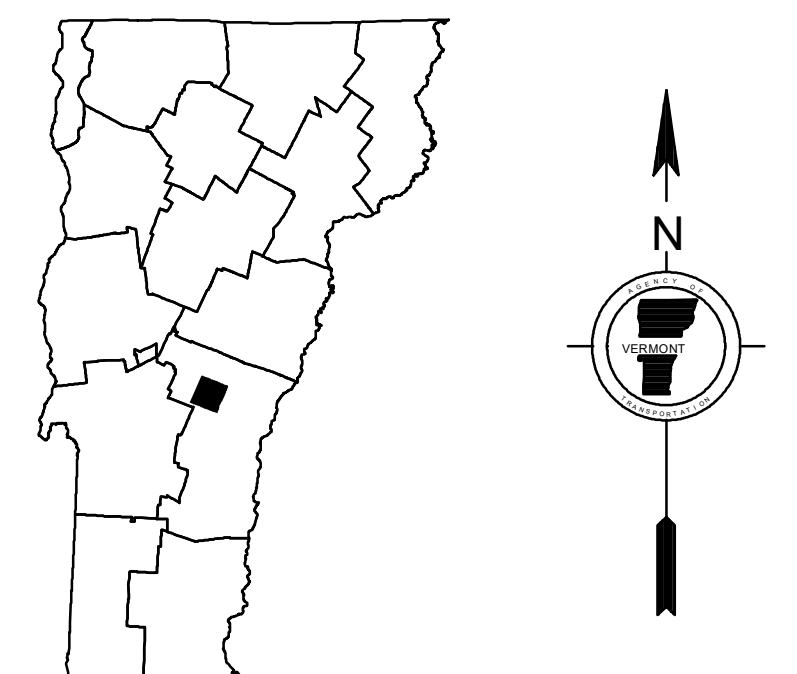
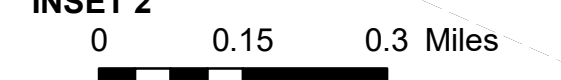
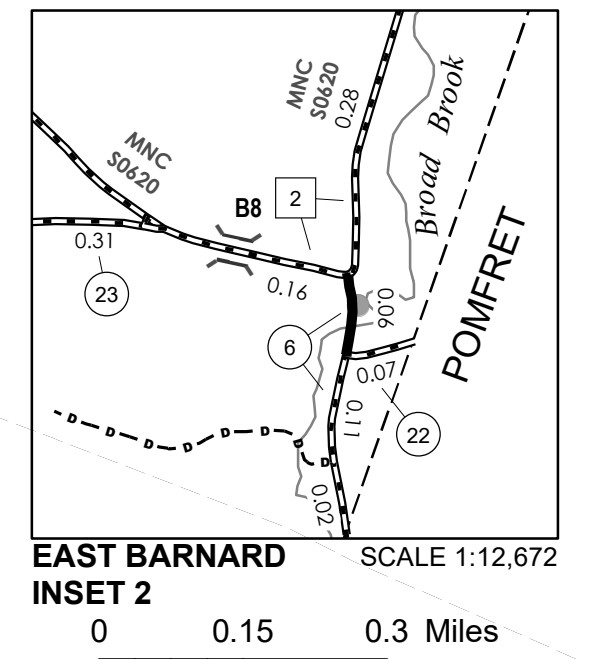
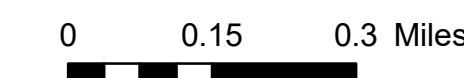
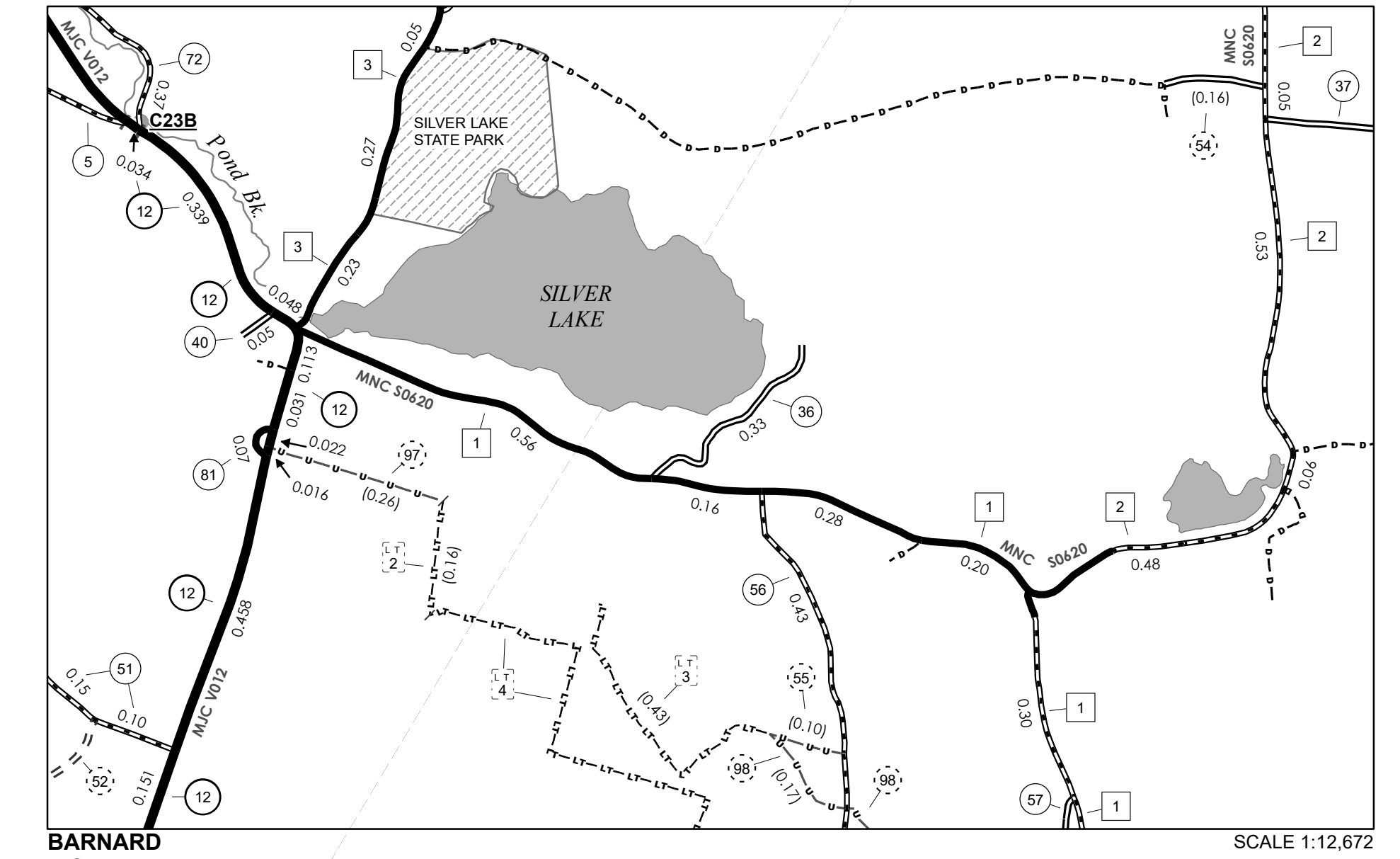
- STATE BOUNDARY
- COUNTY BOUNDARY
- TOWN BOUNDARY
- VILLAGE BOUNDARY
- URBAN COMPACT BOUNDARY
- WATER BODY
- STREAM OR BROOK

**BRIDGE OR CULVERT**

- BRIDGE OR CULVERT > 20'
- BRIDGE OR CULVERT 6' - 20'
- BIKE PATH STRUCTURE
- VT CULVERTS BRIDGE
- VT CULVERTS CULVERT > 6'
- B34 / C34 STATE BRIDGE OR CULVERT IDENTIFIER
- B34 / C34 TOWN BRIDGE OR CULVERT IDENTIFIER

**FEDERAL CLASSIFICATION IDENTIFIER**

- MA MINOR ARTERIAL
- MJC MAJOR COLLECTOR
- MNC MINOR COLLECTOR
- PA PRINCIPAL ARTERIAL

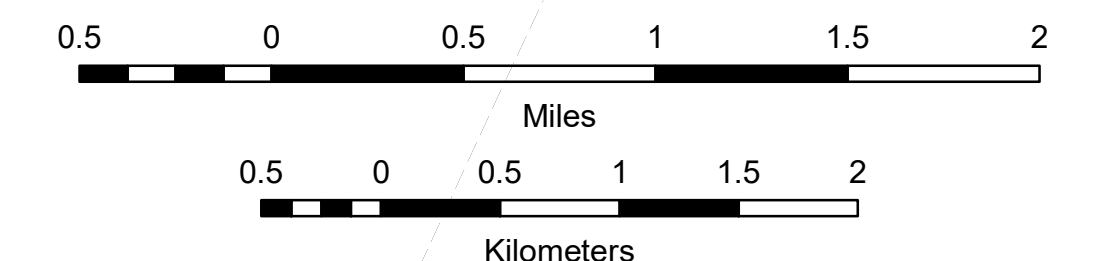


**VERMONT GENERAL HIGHWAY MAP**  
**Town of Barnard**  
WINDSOR COUNTY  
Transportation District #4

Prepared by the  
Vermont Agency of Transportation  
Division of Policy, Planning and Intermodal Development  
in cooperation with  
U.S. Department of Transportation  
Federal Highway Administration

Mileage as of February 10, 2019  
Map prepared April 26, 2019

SCALE 1:31,680



**DISCLAIMER:**  
The untraveled highways (laid-out town highways), discontinued highways, and legal trails herein are those of which the Agency of Transportation has record; others may exist.  
Highway and bridge data by the Agency of Transportation. Town short structures drawn from the VT CULVERTS (formerly VOBCT) online database. All other data from the Vermont Open Geodata Portal. Only named streams shown.