

TOWN HWY. NO.	LENGTH IN MILES CLASS 3	LENGTH IN MILES CLASS 4	TOTAL	FUNCTIONAL CLASS
6	0.10		0.10	(0.09)
8	1.73		1.73	
9	2.06		2.06	
11	0.32	(0.30)	0.62	
12			0.28	
13	1.17		1.17	(0.35)
14	0.18		0.18	
15	0.34		0.34	
16	0.21		0.21	
17	2.78		2.78	(1.18)
18	1.48		1.48	
19	1.27	(0.35)	1.62	
20	0.39		0.39	
21	0.04		0.04	(0.62)
22	0.15		0.15	
23		(0.16)	0.16	
24	0.08		0.08	
25	0.42		0.42	
26	0.25		0.25	
27	0.85	(1.15)	2.00	
28	0.91	(0.09)	1.00	
29	0.56		0.56	
30	0.24		0.24	
31	0.14	(0.24)	0.38	
32	0.31		0.31	
33	0.96	(0.64)	1.60	
35	0.47		0.47	
36	3.51		3.51	
37	0.82		0.82	
38	0.35		0.35	
39	1.41		1.41	
<b>TOTAL</b>			<b>40.01</b>	<b>5.17</b>

\* This portion of town highway is Class 3, but is functionally Class 4

**MILEAGE SUMMARY**

CLASS 2		
TH-1	2.550	
TH-2	3.200	
TH-3	0.340	
TH-4	0.490	
TH-5	2.590	
TH-6	3.020	
TOTAL CLASS 2	12.190	
CLASS 3		
TOTAL CLASS 3	40.010	
TOTAL TOWN	52.200	
STATE HIGHWAY		
VT-11	7.556	
VT-100	7.646	
TOTAL STATE HIGHWAY	15.202	
TOTAL STATE	15.202	

TOTAL, TRAVELED HIGHWAYS, FEB. 10, 2008: 67.402  
(Excludes Class 4 and Legal Trail Mileage)

**HIGHWAYS**

- INTERSTATE
- U.S. ROUTE
- STATE ROUTE
- CLASS 1
- CLASS 2
- CLASS 3
- CLASS 4
- LEGAL TRAIL
- INTERSTATE OR DIVIDED HIGHWAY
- STATE - HARD SURFACE OR PAVED
- TOWN - HARD SURFACE OR PAVED
- GRAVEL
- SOIL OR GRADED AND DRAINED EARTH
- UNIMPROVED OR PRIMITIVE
- IMPASSABLE OR UNTRAVELED
- LEGAL TRAIL
- DISCONTINUED
- HIGHWAY CLASS CHANGE
- RAILROAD

**PUBLIC LAND**

**POLITICAL SUBDIVISIONS**

- STATE BOUNDARY
- COUNTY BOUNDARY
- TOWN BOUNDARY
- VILLAGE BOUNDARY
- URBAN COMPACT BOUNDARY
- OPEN WATER
- STREAM OR BROOK
- BRIDGE OR CULVERT
- BRIDGE OR CULVERT GREATER THAN 20'
- BRIDGE OR CULVERT 6' - 20'
- B34 / C34 STATE BRIDGE OR CULVERT IDENTIFIER
- B34 / C34 TOWN BRIDGE OR CULVERT IDENTIFIER

**FEDERAL CLASSIFICATION IDENTIFIER**

- FAU URBAN ARTERIAL OR COLLECTOR
- MA MINOR ARTERIAL
- MJC MAJOR COLLECTOR
- MNC MINOR COLLECTOR
- PA PRINCIPAL ARTERIAL

**DISCLAIMER:**

The untraveled highways (laid-out town highways), discontinued highways, and legal trails shown hereon are those of which the Agency of Transportation has record; others may exist.

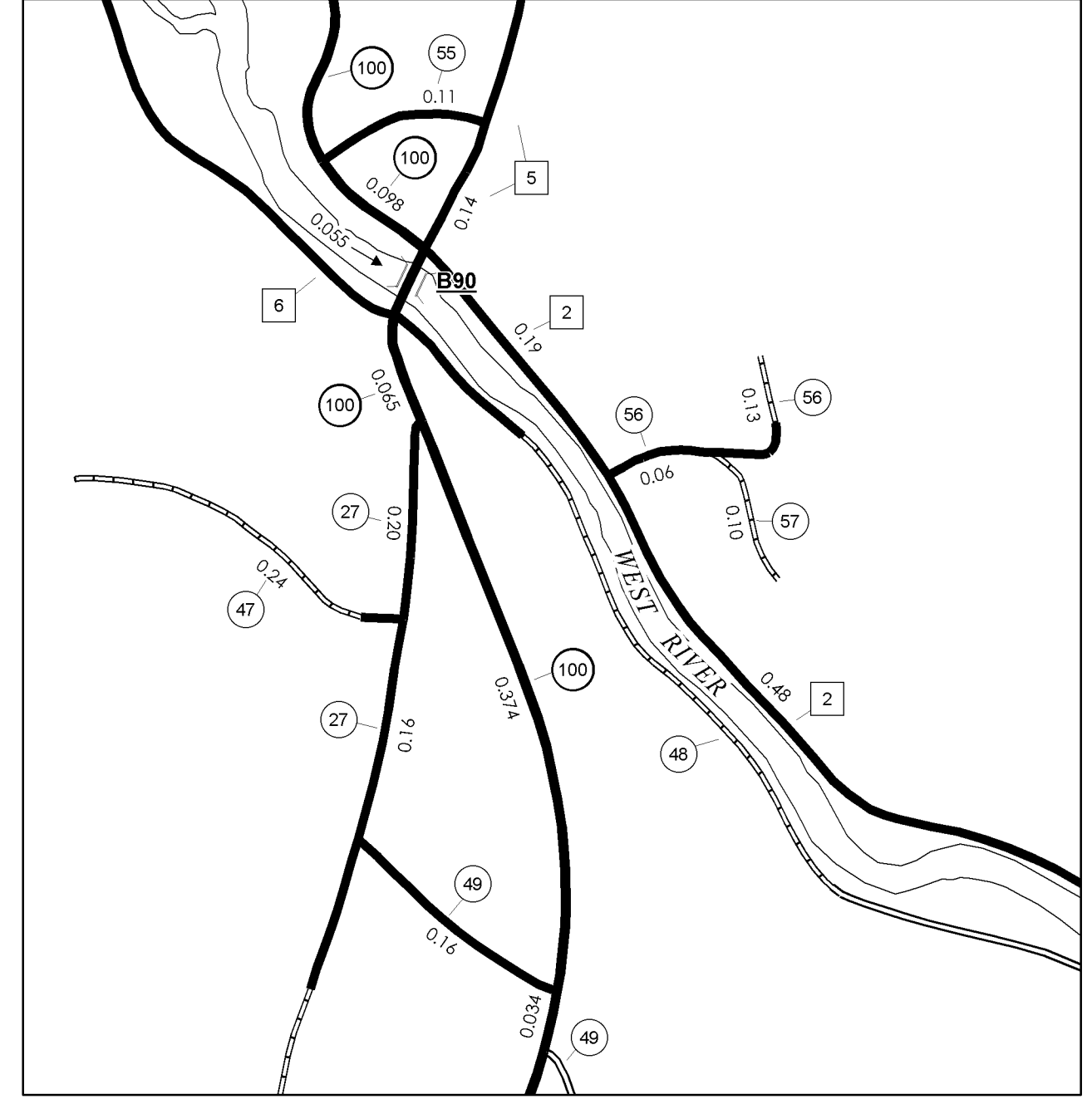
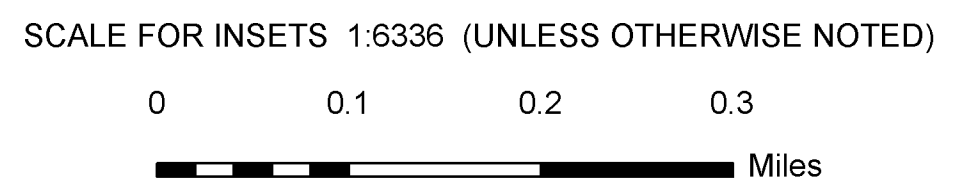
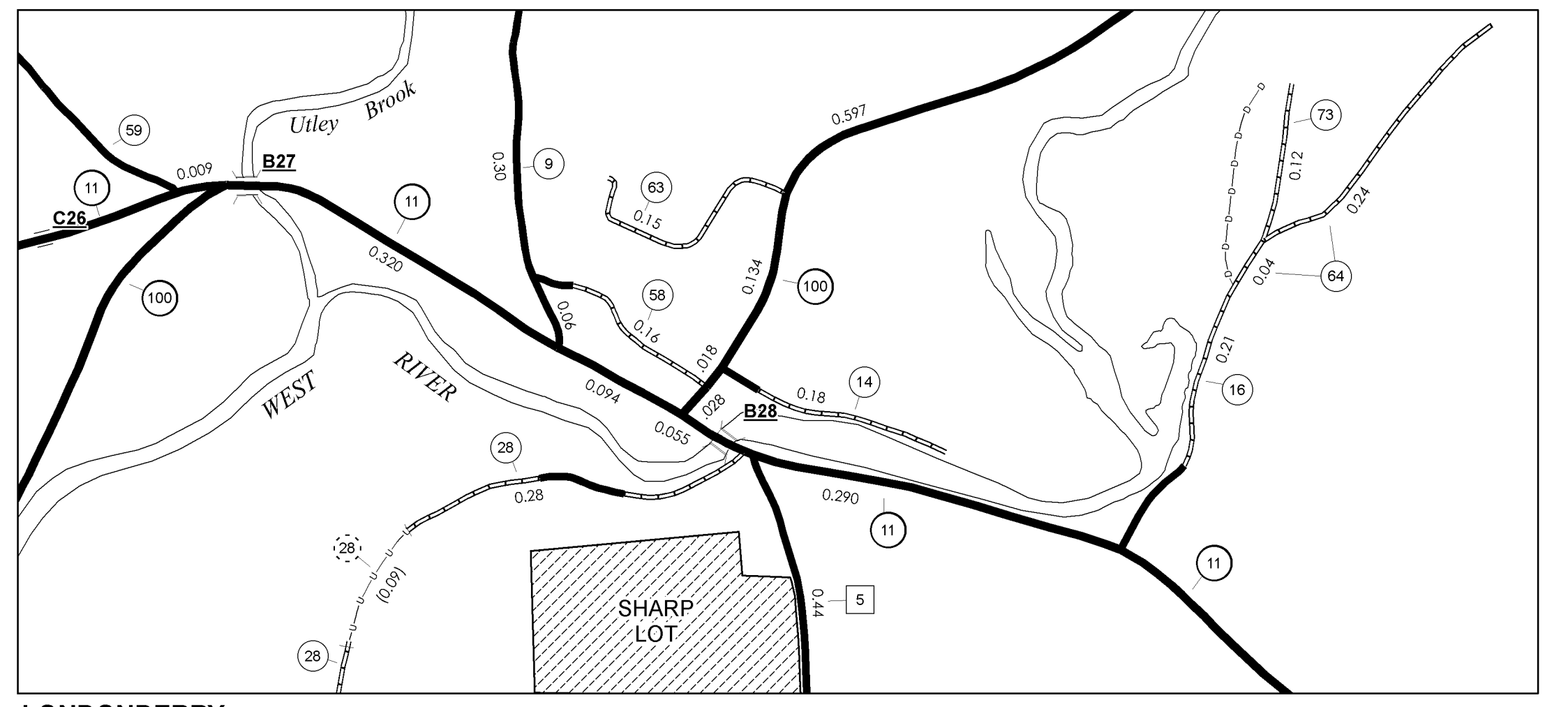
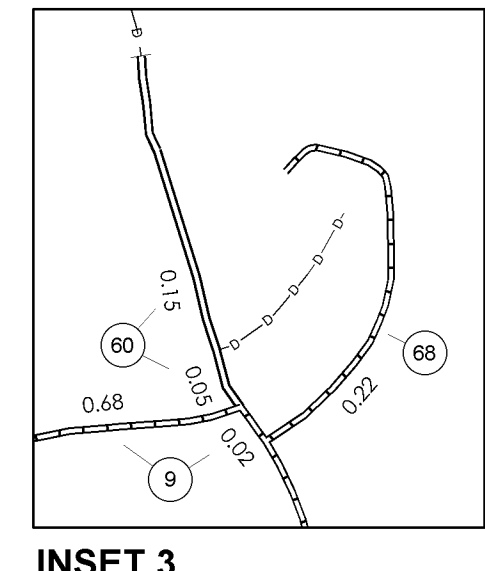
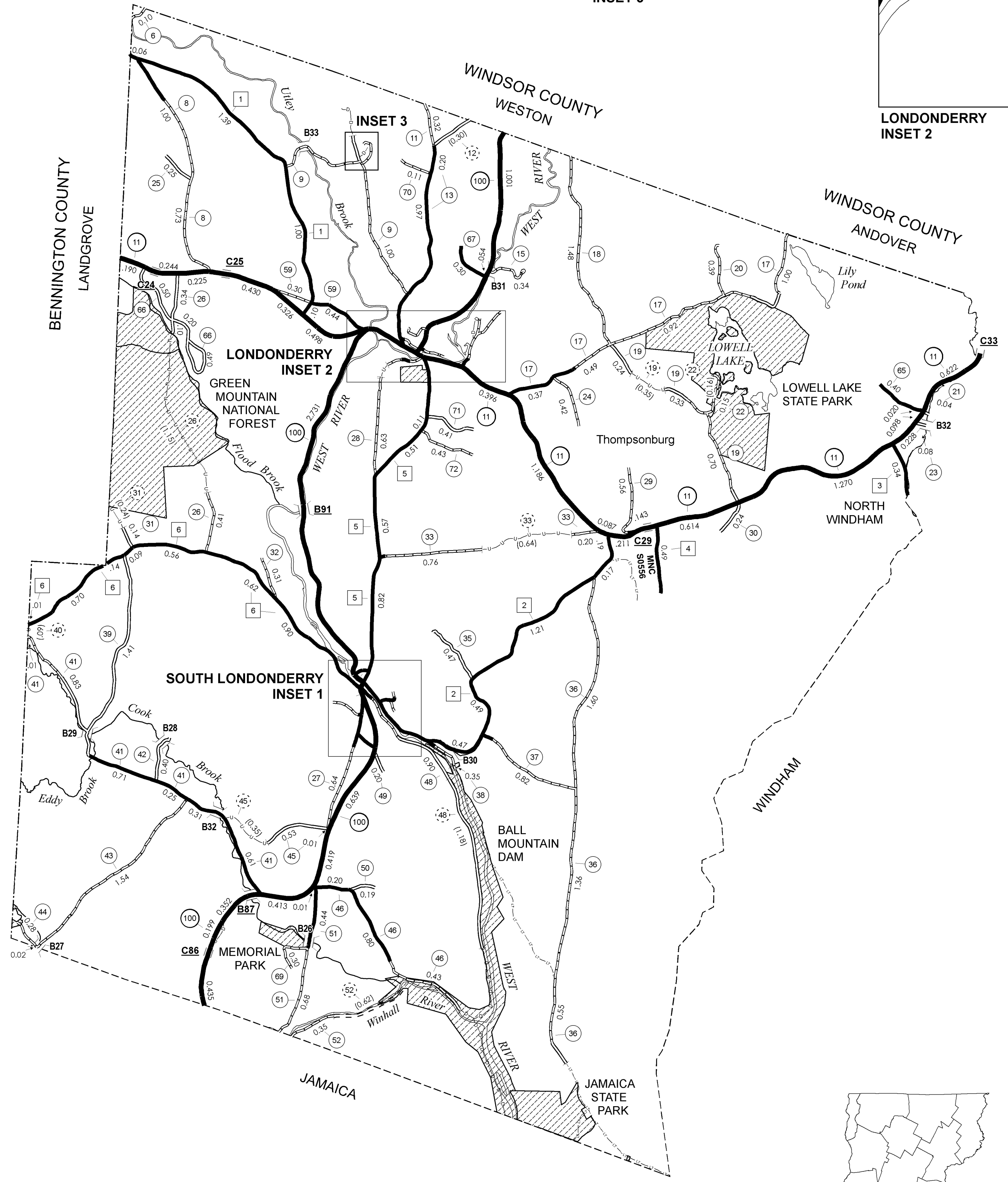
Highway and bridge data by the Agency of Transportation, Policy & Planning Division. All other data from the Vermont Center for Geographic Information.

**STRUCTURES - SURFACE WATER NOTE:**

Town short structures (bridges or culverts from 6-feet to less than 20-feet) were not represented due to inconsistencies in the data.

The surface waters are from the Vermont Hydrological Dataset (VHD). Only the named streams are shown.

Vermont State Plane Coordinate System  
North American Datum of 1983  
SPCS\_Zone\_Identifier: 4400  
Geodetic Reference System 80  
4,000-meter grid, Easting - Northing



SOUTH LONDONDERRY INSET 1

**VERMONT**  
**GENERAL HIGHWAY MAP**  
**Town of Londonderry**  
WINDHAM COUNTY

Transportation District #2

Prepared by the  
Vermont Agency of Transportation  
Policy & Planning Division  
in cooperation with  
U.S. Department of Transportation  
Federal Highway Administration

Mileage as of: Feb. 10, 2008  
Map generated: October, 2008

SCALE: 1:31680

