

TOWN HWY. No.	LENGTH IN MILES CLASS 3	CLASS 4	TOWN HWY. No.	LENGTH IN MILES CLASS 3	CLASS 4
6	0.05		49	0.16	
7	0.34		50	0.58	
8	3.37		51	0.06	
9	1.80		52	0.25	
10	0.15		53	0.25	
11	0.29		54	0.05	
12	0.33		55	0.22	
13	0.29		56	0.24	
14	0.72	(0.66)	57	0.74	
15	3.83		58	0.31	
16	0.75		59	0.08	
17	0.91		60	0.36	
18	0.54		65	0.97	
19	3.34		66	0.73	
20	0.32		67	0.85	
21	0.95		68	0.75	
22	1.07		69	0.35	
23	1.56		70	0.51	
24	0.60		71	0.71	
25	1.02		72	0.05	
26	1.37		73	0.20	
27	1.02		75	0.12	
28	1.77		76	0.18	
29		(0.85)	77	0.71	
30	0.45		78	0.41	
31	1.56		79	0.77	
33	0.15		81	0.20	
34	0.22		82	0.17	
35	0.06		83	0.22	
38	0.06		84	0.04	
39	0.40	(0.10)	85	0.08	
41	0.40		86	0.03	
42	2.91		87	0.24	
43	0.65		88	0.53	
44	0.28		89	0.20	
45	0.64		90	0.66	
46	0.17		91	0.23	
47	0.37		92		(0.51)
48	0.17		TOTAL	48.09	2.12

TOWN HWY. No.	LENGTH IN MILES "NOT UP TO STANDARD"	LEGAL TRAIL No.	LENGTH IN MILES LEGAL TRAIL
15	(0.53)	2	(0.29)
TOTAL	0.53	3	(0.50)
		4	(2.00)
		5	(2.22)
		6	(1.00)
		7	(0.33)
		8	(0.72)
		9	(0.72)
		10	(0.59)
		11	(0.32)
		12	(1.42)
		13	(0.08)
		14	(0.03)
		15	(0.59)
		16	(0.50)
TOTAL		TOTAL	11.71

MILEAGE SUMMARY

CLASS 2	LENGTH IN MILES	CLASS 3	LENGTH IN MILES
TH-1	4.370		
TH-2	2.000		
TH-3	1.540		
TH-4	1.380		
TH-5	1.090		
TOTAL CLASS 2	10.380		
CLASS 3		48.09	
TOTAL CLASS 3		48.09	
TOTAL TOWN		58.470	
STATE HIGHWAY VT-100	5.547		
TOTAL STATE HIGHWAY	5.547		
TOTAL STATE	5.547		

TOTAL, TRAVELED HIGHWAYS, FEB. 10, 2015: 64.017
 (Excludes Class 4, Legal Trail, and Unidentified Corridor Mileage)

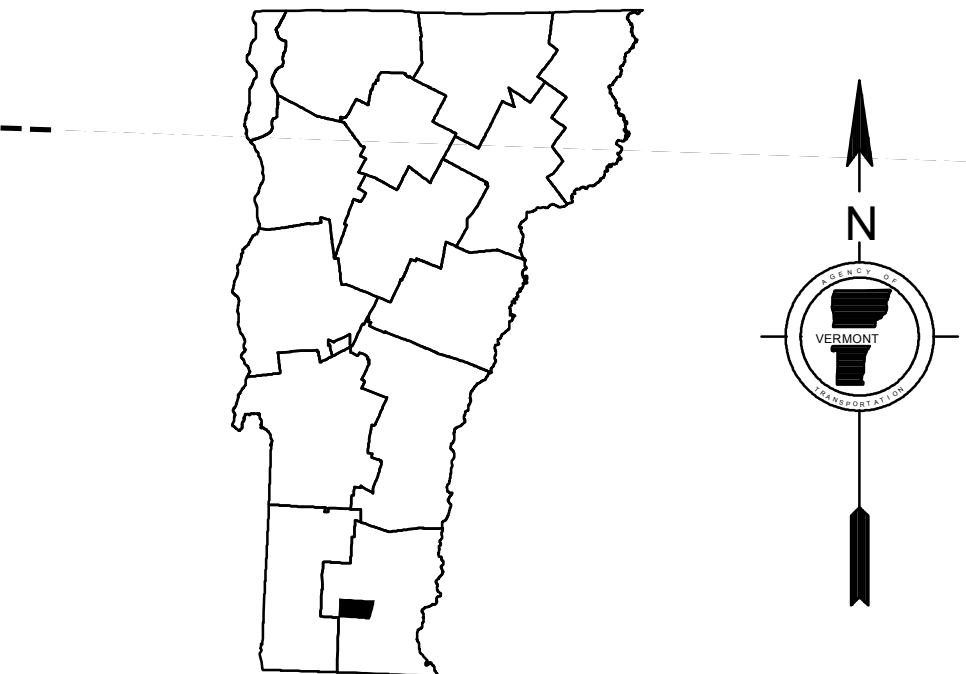
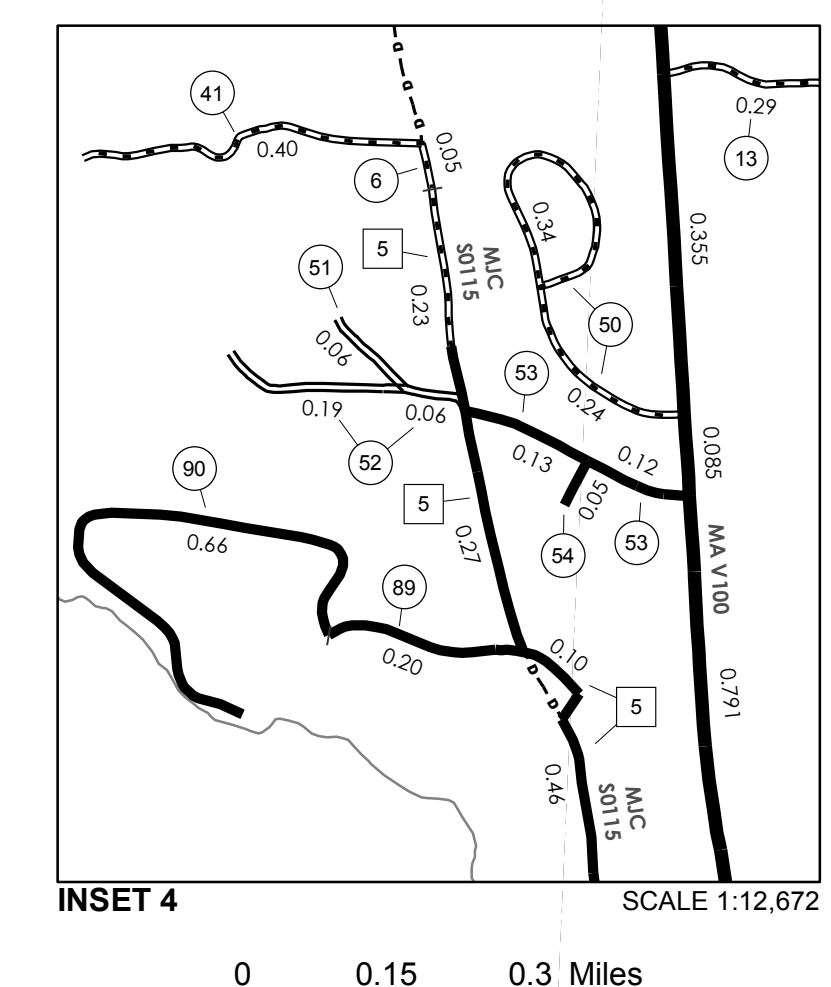
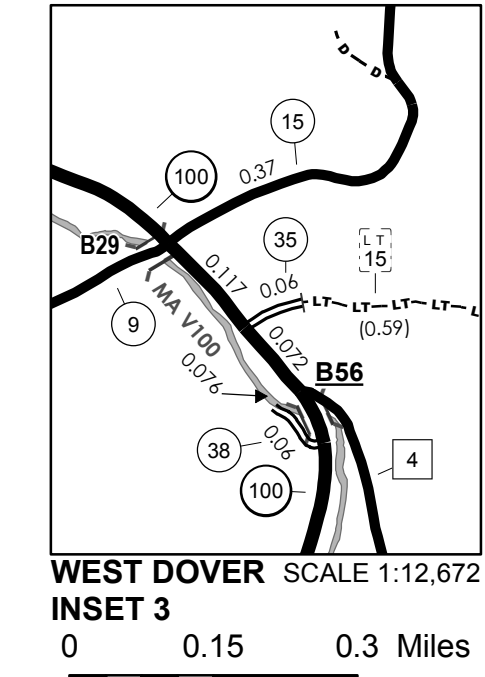
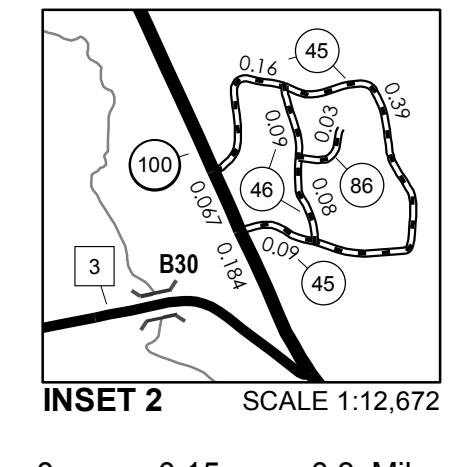
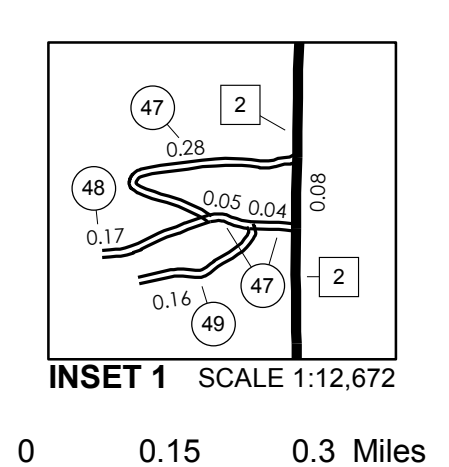
- HIGHWAYS**
- INTERSTATE
 - U.S. ROUTE
 - STATE ROUTE
 - CLASS 1
 - CLASS 2
 - CLASS 3
 - CLASS 4
 - LEGAL TRAIL
 - INTERSTATE OR DIVIDED HIGHWAY
 - STATE - HARD SURFACE OR PAVED
 - TOWN - HARD SURFACE OR PAVED
 - GRAVEL
 - SOIL OR GRADED AND DRAINED EARTH
 - UNIMPROVED OR PRIMITIVE
 - IMPASSABLE OR UNTRAVELED
 - LEGAL TRAIL
 - DISCONTINUED
 - HIGHWAY CLASS CHANGE
 - RAILROAD
 - INACTIVE RAILROAD
 - NFR NATIONAL FOREST ROAD
 - SFH STATE FOREST HIGHWAY
 - P PARK AND RIDE

- POLITICAL SUBDIVISIONS**
- STATE BOUNDARY
 - COUNTY BOUNDARY
 - TOWN BOUNDARY
 - VILLAGE BOUNDARY
 - URBAN COMPACT BOUNDARY
 - WATER BODY
 - STREAM OR BROOK
- BRIDGE OR CULVERT**
- BRIDGE OR CULVERT > 20'
 - BRIDGE OR CULVERT 6' - 20'
 - VOCBIT BRIDGE
 - VOCBIT CULVERT > 6'
- FEDERAL CLASSIFICATION IDENTIFIER**
- FAU URBAN ARTERIAL OR COLLECTOR
 - MA MINOR ARTERIAL
 - MJC MAJOR COLLECTOR
 - MNC MINOR COLLECTOR
 - PA PRINCIPAL ARTERIAL
- B34 / C34 STATE BRIDGE OR CULVERT IDENTIFIER**
B34 / C34 TOWN BRIDGE OR CULVERT IDENTIFIER

DISCLAIMER:
 The untraveled highways (laid-out town highways), discontinued highways, and legal trails hereon are those of which the Agency of Transportation has record; others may exist.

Highway and bridge data by the Agency of Transportation. Town short structures are drawn from the Vermont Online Bridge & Culvert Inventory Tool (VOBCIT) database. All other data from the Vermont Center for Geographic Information. Only named streams are shown.

Vermont State Plane Coordinate System
 North American Datum of 1983
 SPCS_Zone_Identifier: 4400
 Geodetic Reference System 80
 4,000-meter grid, Easting - Northing



VERMONT GENERAL HIGHWAY MAP
Town of Dover

WINDHAM COUNTY
 Transportation District #1
 Prepared by the Vermont Agency of Transportation
 Division of Policy, Planning and Intermodal Development
 in cooperation with
 U.S. Department of Transportation
 Federal Highway Administration

