

TOWN HWY. No.	LENGTH IN MILES CLASS 3	CLASS 4	TOWN HWY. No.	LENGTH IN MILES CLASS 3	CLASS 4
6	0.05		49	0.16	
7	0.34		50	0.58	
8	3.37		51	0.06	
9	1.80		52	0.25	
10	0.15		53	0.25	
11	0.29		54	0.05	
12	0.33		55	0.22	
13	0.29		56	0.24	
14	0.72	(0.66)	57	0.74	
15	3.83		58	0.31	
16	0.75		59	0.08	
17	0.91		60	0.36	
18	0.54		65	0.97	
19	3.34		66	0.73	
20	0.32		67	0.85	
21	0.95		68	0.75	
22	1.07		69	0.35	
23	1.56		70	0.51	
24	0.60		71	0.71	
25	1.02		72	0.05	
26	1.37		73	0.20	
27	1.02		75	0.12	
28	1.77		76	0.18	
29		(0.85)	77	0.71	
30	0.45		78	0.41	
31	1.56		79	0.77	
33	0.15		81	0.20	
34	0.22		82	0.17	
35	0.06		83	0.22	
38	0.06		84	0.04	
39	0.40	(0.10)	85	0.08	
41	0.40		86	0.03	
42	2.91		87	0.24	
43	0.65		88	0.53	
44	0.28		89	0.20	
45	0.64		90	0.66	
46	0.17		91	0.23	
47	0.37		92		(0.51)
48	0.17		<b>TOTAL</b>	<b>48.09</b>	<b>2.12</b>

TOWN HWY. No.	LENGTH IN MILES "NOT UP TO STANDARD"	LEGAL TRAIL No.	LENGTH IN MILES LEGAL TRAIL
15	(0.53)	2	(0.29)
		3	(0.50)
		4	(2.00)
		5	(2.22)
		6	(1.00)
		7	(0.33)
		8	(0.72)
		9	(0.72)
		10	(0.59)
		11	(0.32)
		12	(1.42)
<b>TOTAL</b>	<b>0.53</b>	<b>TOTAL</b>	<b>10.51</b>

**MILEAGE SUMMARY**

CLASS 2	LENGTH IN MILES	CLASS 3	LENGTH IN MILES
TH-1	4.370		
TH-2	2.000		
TH-3	1.540		
TH-4	1.380		
TH-5	1.090		
<b>TOTAL CLASS 2</b>	<b>10.380</b>		
		<b>TOTAL CLASS 3</b>	<b>48.09</b>
		<b>TOTAL TOWN</b>	<b>58.470</b>
STATE HIGHWAY VT-100	5.547		
<b>TOTAL STATE HIGHWAY</b>	<b>5.547</b>		
<b>TOTAL STATE</b>	<b>5.547</b>		

**TOTAL, TRAVELED HIGHWAYS, FEB. 10, 2014: 64.017**  
 (Excludes Class 4, Legal Trail, and Unidentified Corridor Mileage)

- HIGHWAYS**
- INTERSTATE
  - U.S. ROUTE
  - STATE ROUTE
  - CLASS 1
  - CLASS 2
  - CLASS 3
  - CLASS 4
  - LEGAL TRAIL
  - INTERSTATE OR DIVIDED HIGHWAY
  - STATE - HARD SURFACE OR PAVED
  - TOWN - HARD SURFACE OR PAVED
  - GRAVEL
  - SOIL OR GRADED AND DRAINED EARTH
  - UNIMPROVED OR PRIMITIVE
  - IMPASSABLE OR UNTRAVELED
  - LEGAL TRAIL
  - DISCONTINUED
  - HIGHWAY CLASS CHANGE
  - RAILROAD
  - INACTIVE RAILROAD
  - NFR NATIONAL FOREST ROAD
  - SFH STATE FOREST HIGHWAY
  - P PARK AND RIDE

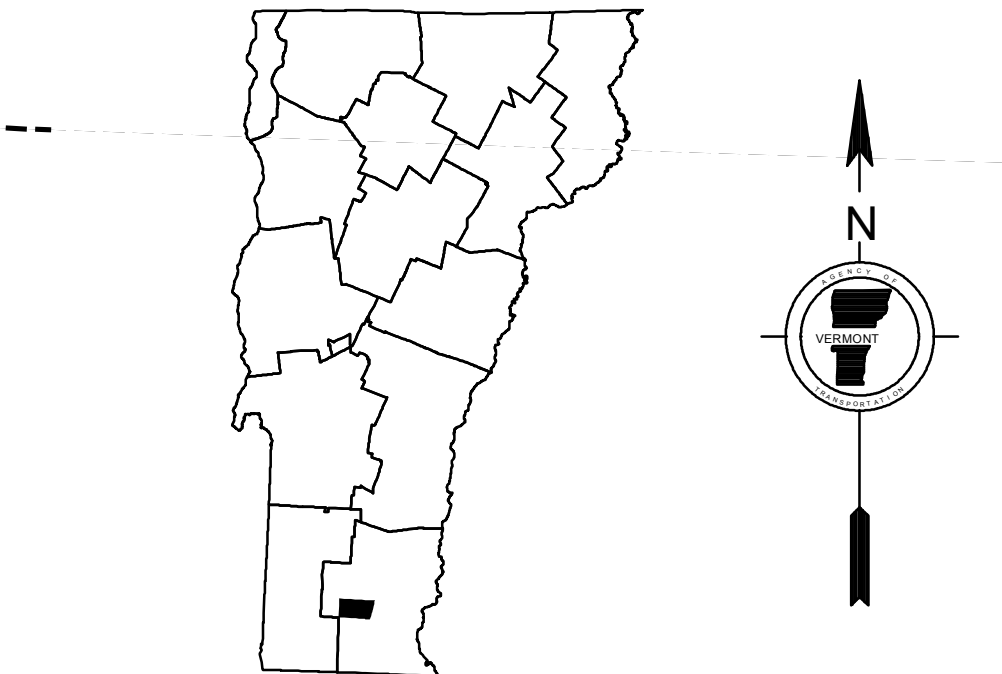
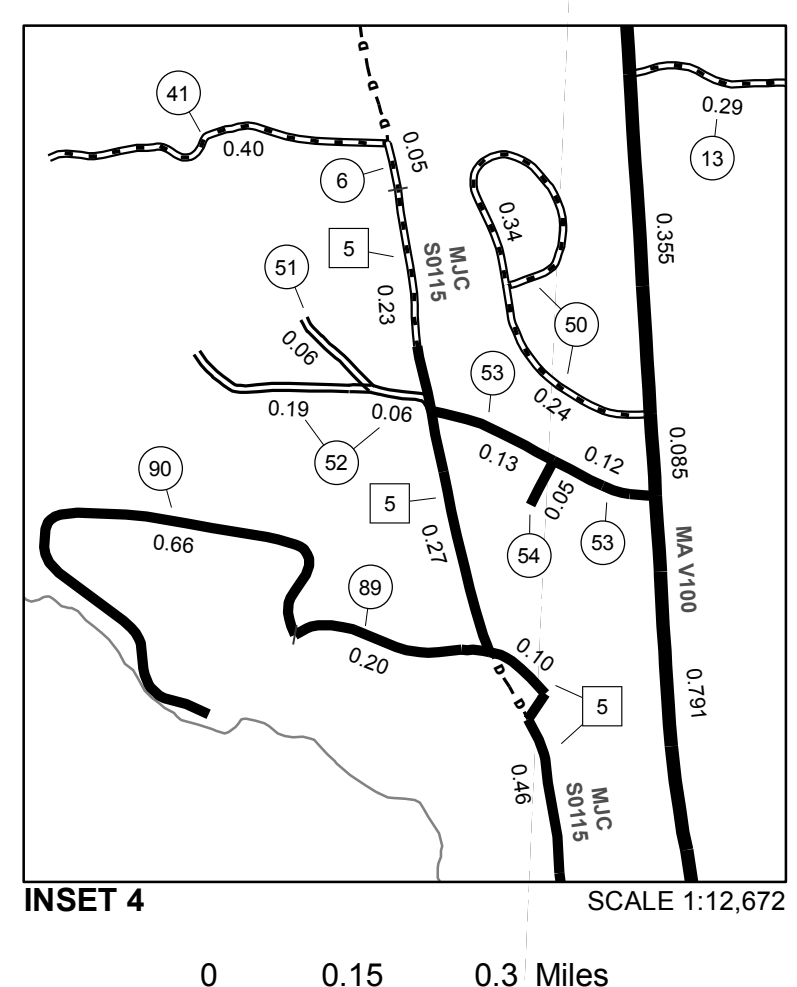
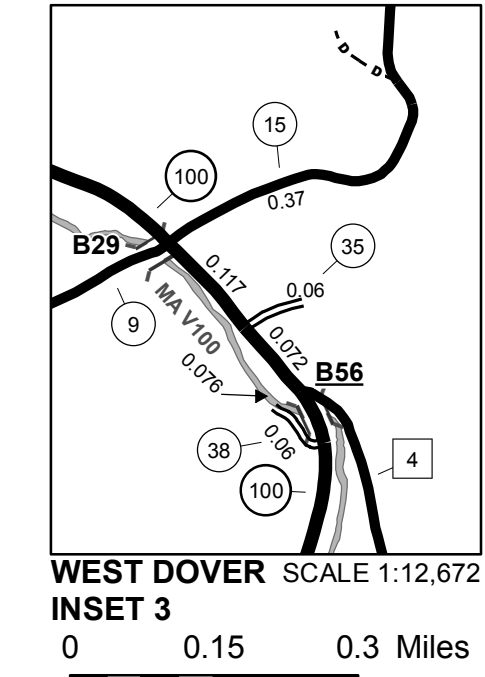
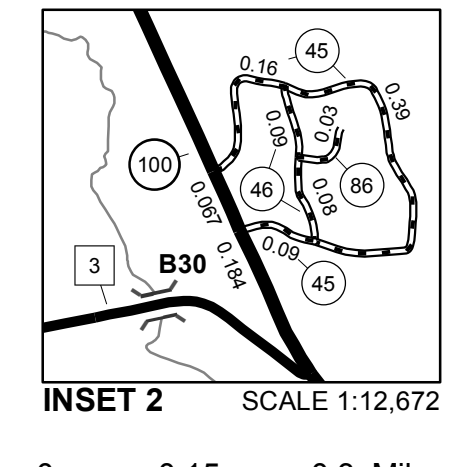
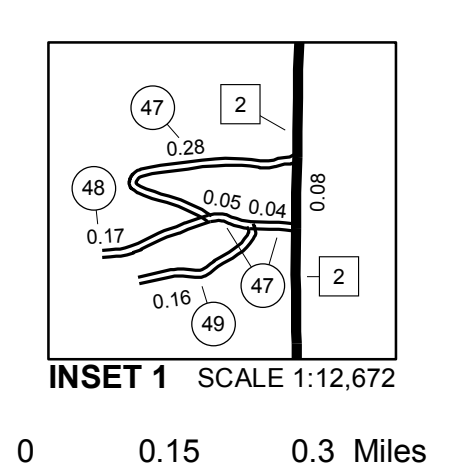
- POLITICAL SUBDIVISIONS**
- STATE BOUNDARY
  - COUNTY BOUNDARY
  - TOWN BOUNDARY
  - VILLAGE BOUNDARY
  - URBAN COMPACT BOUNDARY
  - WATER BODY
  - STREAM OR BROOK
  - BRIDGE OR CULVERT**
  - BRIDGE OR CULVERT > 20'
  - BRIDGE OR CULVERT 6' - 20'
  - VOBCIT BRIDGE
  - VOBCIT CULVERT > 6'
  - B34 / C34 STATE BRIDGE OR CULVERT IDENTIFIER**
  - B34 / C34 TOWN BRIDGE OR CULVERT IDENTIFIER**

- FEDERAL CLASSIFICATION IDENTIFIER**
- FAU URBAN ARTERIAL OR COLLECTOR
  - MA MINOR ARTERIAL
  - MJC MAJOR COLLECTOR
  - MNC MINOR COLLECTOR
  - PA PRINCIPAL ARTERIAL

**DISCLAIMER:**  
 The untraveled highways (laid-out town highways), discontinued highways, and legal trails hereon are those of which the Agency of Transportation has record; others may exist.

Highway and bridge data by the Agency of Transportation. Town short structures are drawn from the Vermont Online Bridge & Culvert Inventory Tool (VOBCIT) database. All other data from the Vermont Center for Geographic Information. Only named streams are shown.

Vermont State Plane Coordinate System  
 North American Datum of 1983  
 SPCS\_Zone\_Identifier: 4400  
 Geodetic Reference System 80  
 4,000-meter grid, Easting - Northing



**VERMONT GENERAL HIGHWAY MAP**  
**Town of Dover**  
 WINDHAM COUNTY  
 Transportation District #1  
 Prepared by the Vermont Agency of Transportation  
 Division of Policy, Planning and Intermodal Development  
 in cooperation with  
 U.S. Department of Transportation  
 Federal Highway Administration

