

TOWN HWY. NO.	LENGTH IN MILES CLASS 3	CLASS 4	60	0.35
7	1.16	(0.39)	61	1.86
8	10.63		62	
9	1.24	(0.16)	63	0.16
10	0.20		64	0.20
12	0.06		65	0.25
13	0.35		66	0.40
14	0.07	(0.73)	67	0.06
15		(0.12)	68	0.20
16	0.59	(0.42)	69	0.20
17	0.20		70	0.20
18	1.97		71	0.18
19	0.10	(0.15)	72	0.87
20	0.60	(0.40)	73	1.37
21	0.10		74	0.50
23	0.54	(1.06)	75	3.85
24	0.77	(0.60)	76	0.05
25	3.60		77	0.38
26	0.40		78	
27	0.25	(0.20)	79	0.55
28	0.40		80	0.05
29	0.70		81	0.05
30		(0.20)	83	0.22
31	0.81		84	0.04
32	2.31		85	0.10
33	0.40		86	0.07
34	0.30		87	0.15
35	0.10		88	0.08
36	0.08		89	0.10
37	0.04		90	0.03
38	0.15		92	0.09
39		(0.20)	93	0.05
40		(0.20)	94	0.10
41	0.14		95	0.05
42	0.11		96	0.17
43	0.32	(0.60)	97	
44	0.30		98	0.06
45	0.82	(0.58)	99	0.18
46	0.35	(1.20)	100	0.27
47	0.62		101	0.07
48	0.10		102	0.11
49	0.25		103	0.21
50	0.03	(0.37)	104	0.32
51	1.10		105	0.05
52	0.50		106	0.16
53	2.10		107	0.16
54	0.03		108	0.04
55	0.10		109	0.34
56	1.42	(0.13)	110	0.77
57	3.12		111	0.09
58	1.84		112	0.10
59	0.25			
TOTAL	57.53	8.30		

MILEAGE SUMMARY

CLASS 1	0.508		
TH-1	0.401		
TH-2			
TOTAL CLASS 1	0.909		
CLASS 2	1.350		
TH-3	2.810		
TH-4	0.650		
TH-5			
TOTAL CLASS 2	4.810		
CLASS 3	57.530		
TOTAL CLASS 3	57.530		
TOTAL TOWN	63.249		
STATE HIGHWAY			
VT-12	3.919		
VT-12A	4.075		
VT-64	2.547		
TOTAL STATE HIGHWAY	10.541		
TOTAL STATE	10.541		

TOTAL, TRAVELED HIGHWAYS, FEB. 10, 2010: 73.790
(Excludes Class 4 and Legal Trail Mileage)

LEGAL TRAIL LENGTH IN MILES

1	(0.40)
2	(0.08)
3	(0.07)
4	(0.14)
TOTAL	0.69

- HIGHWAYS**
- INTERSTATE
 - U.S. ROUTE
 - STATE ROUTE
 - CLASS 1
 - CLASS 2
 - CLASS 3
 - CLASS 4
 - LEGAL TRAIL
 - INTERSTATE OR DIVIDED HIGHWAY
 - STATE - HARD SURFACE OR PAVED
 - TOWN - HARD SURFACE OR PAVED
 - GRAVEL
 - SOIL OR GRADED AND DRAINED EARTH
 - UNIMPROVED OR PRIMITIVE
 - IMPASSABLE OR UNTRAVELED
 - LEGAL TRAIL
 - DISCONTINUED
 - HIGHWAY CLASS CHANGE
 - RAILROAD
- POLITICAL SUBDIVISIONS**
- STATE BOUNDARY
 - COUNTY BOUNDARY
 - TOWN BOUNDARY
 - VILLAGE BOUNDARY
 - URBAN COMPACT BOUNDARY
 - WATER BODIES
 - STREAM OR BROOK
 - BRIDGE OR CULVERT
 - BRIDGE OR CULVERT GREATER THAN 20'
 - BRIDGE OR CULVERT 6' - 20'
 - TOWN SHORT STRUCTURE
- B34 / C34 STATE BRIDGE OR CULVERT IDENTIFIER**
B34 / C34 TOWN BRIDGE OR CULVERT IDENTIFIER
- FEDERAL CLASSIFICATION IDENTIFIER**
- FAU URBAN ARTERIAL OR COLLECTOR
 - MA MINOR ARTERIAL
 - MJC MAJOR COLLECTOR
 - MNC MINOR COLLECTOR
 - PA PRINCIPAL ARTERIAL

STRUCTURES - SURFACE WATER NOTE:

STRUCTURES:
Town short structures (bridges or culverts from 4-feet to less than 20-feet) are drawn from the Vermont Online Bridge & Culvert Inventory Tool (VOBCIT) database.
NOTE: Town shorts are not consistently tagged within VOBCIT.

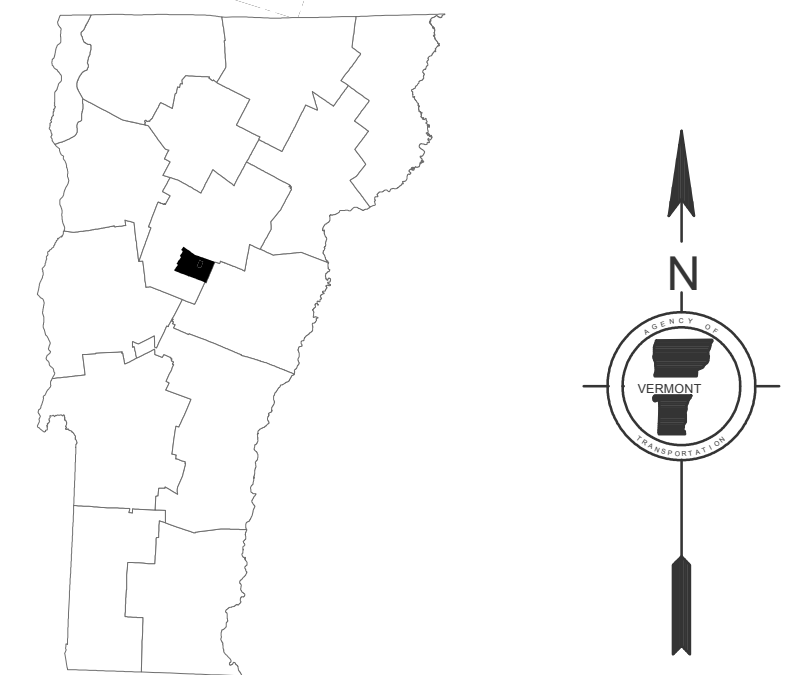
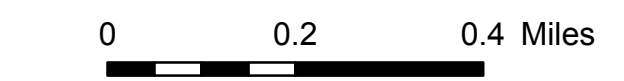
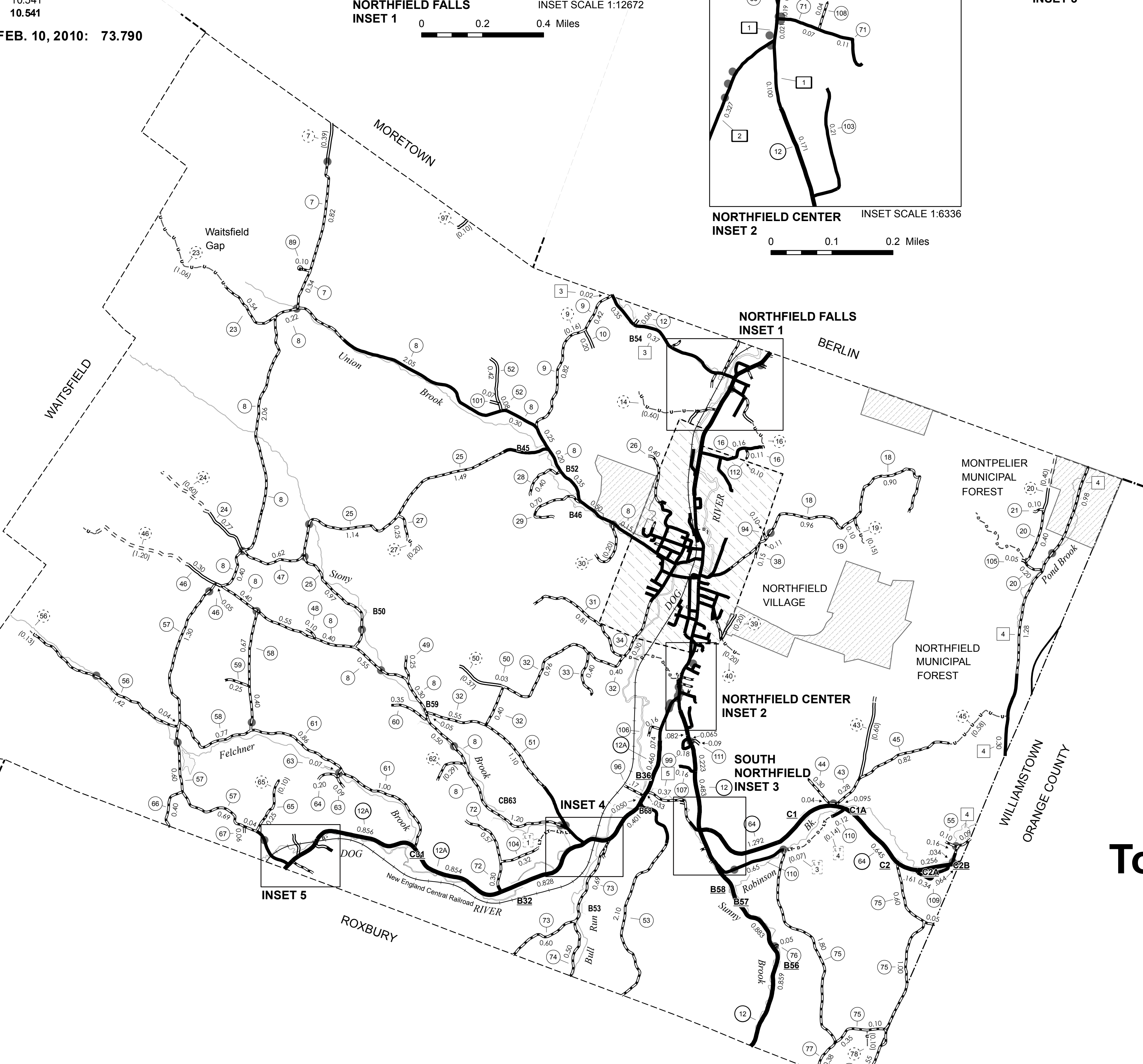
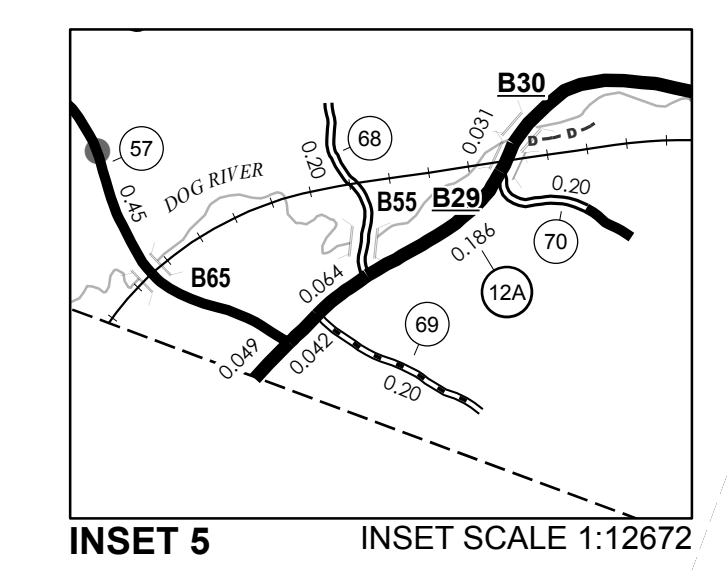
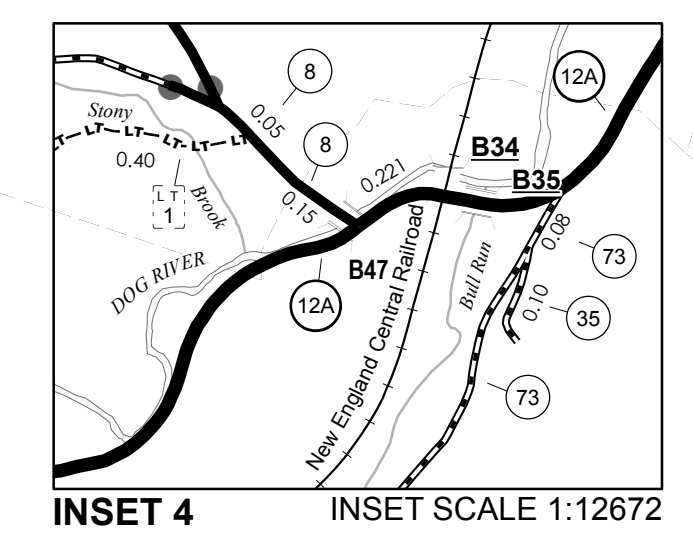
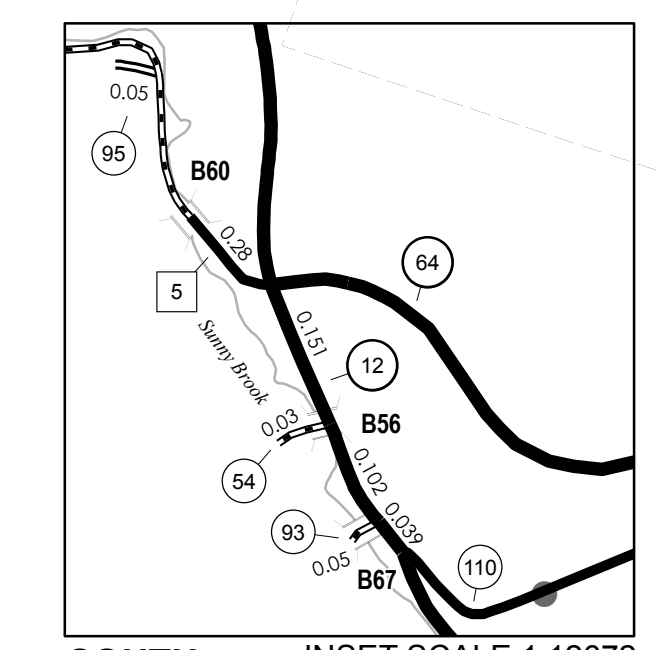
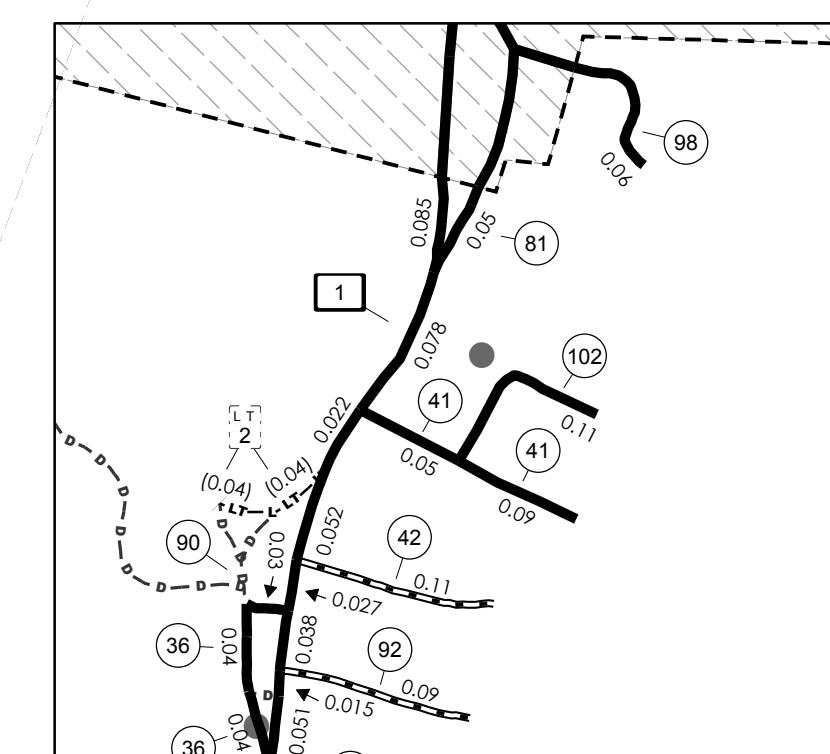
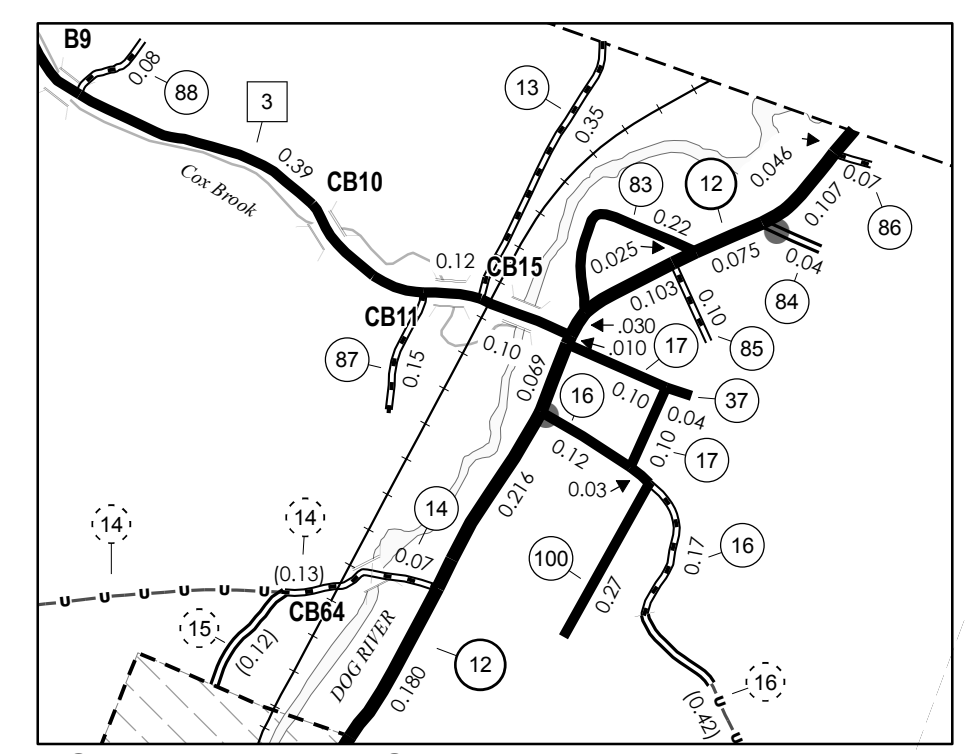
The surface waters are from the Vermont Hydrological Dataset (VHD). Only the named streams are shown.

DISCLAIMER:

The untraveled highways (laid-out town highways), discontinued highways, and legal trails shown herein are those of which the Agency of Transportation has record; others may exist.

Highway and bridge data by the Agency of Transportation. All other data from the Vermont Center for Geographic Information.

Vermont State Plane Coordinate System
North American Datum of 1983
SPCS Zone Identifier: 4400
Geodetic Reference System 80
4,000-meter grid, Easting - Northing



VERMONT GENERAL HIGHWAY MAP
Town of Northfield

WASHINGTON COUNTY

Transportation District #6

Prepared by the
Vermont Agency of Transportation
Division of Planning, Outreach
and Community Affairs
in cooperation with
U.S. Department of Transportation
Federal Highway Administration

Mileage as of February 10, 2010
Map prepared April 22, 2010

SCALE 1:31,680

