

TOWN HWY. No.	CLASS	LENGTH IN MILES	TOWN HWY. No.	CLASS	LENGTH IN MILES	TOWN HWY. No.	CLASS	LENGTH IN MILES
8	3	0.14	83	3	0.24	156	3	0.43
9	3	1.58	84	3	0.24	157	3	0.04
10	3	0.35	85	3	0.10	158	3	0.04
13	3	0.14	86	3	0.14	160	3	0.10
14	3	0.10	87	3	0.03	161	3	0.08
15	3	0.87	88	3	0.13	162	3	0.21
16	3	1.00	89	3	0.13	163	3	0.47
17	3	0.13	90	3	0.12	164	3	0.16
18	3	0.05	91	3	0.15	167	3	0.07
19	3	0.05	92	3	0.15	168	3	0.12
20	3	1.22	93	3	0.08	169	3	0.11
21	3	1.51	94	3	0.15	170	3	0.19
22	3	2.26	95	3	0.07	171	3	0.58
23	3	0.27	96	3	0.04	172	3	0.07
25	3	0.35	97	3	0.09	174	3	0.48
26	3	0.44	100	3	0.16	174	3	0.17
27	3	1.95	101	3	0.16	175	3	0.13
28	3	3.60	102	3	0.08	176	3	0.26
29	3	0.10	103	3	0.07	177	3	0.26
30	3	3.22	104	3	0.03	178	3	0.19
31	3	1.06	105	3	0.09	179	3	0.11
32	3	0.35	106	3	0.13	180	3	0.09
33	3	0.16	107	3	0.06	181	3	0.22
34	3	0.30	108	3	0.06	182	3	0.21
35	3	0.34	109	3	0.05	183	3	0.32
36	3	1.75	110	3	0.04	184	3	0.65
37	3	0.30	111	3	0.07	185	3	0.06
38	3	1.77	112	3	0.05	186	3	0.53
39	3	1.05	113	3	0.06	187	3	0.18
40	3	0.80	114	3	0.05	188	3	0.08
41	3	0.21	115	3	0.06	189	3	0.23
42	3	0.08	116	3	0.05	190	3	0.22
43	3	4.20	117	3	0.06	192	3	0.04
44	3	0.37	118	3	0.03	193	3	0.19
45	3	1.07	119	3	0.10	194	3	0.10
46	3	0.67	120	3	0.10	195	3	0.42
48	3	0.33	121	3	0.30	196	3	0.06
49	3	0.45	122	3	0.04	197	3	0.35
50	3	0.95	123	3	0.05	198	3	0.11
51	3	0.40	124	3	0.08	199	3	0.19
52	3	0.16	125	3	0.47	200	3	0.27
53	3	0.91	127	3	0.03	201	3	0.10
54	3	0.35	128	3	0.22	202	3	0.61
55	3	1.99	129	3	0.26	203	3	0.23
56	3	0.60	130	3	0.07	204	3	0.41
57	3	2.00	131	3	0.11	205	3	0.09
60	3	1.16	133	3	0.51	207	3	0.53
61	3	1.00	134	3	0.26	208	3	0.36
62	3	0.45	135	3	0.26	209	3	0.13
63	3	0.40	136	3	0.23	210	3	0.23
64	3	0.10	137	3	0.07	211	3	0.60
65	3	0.10	138	3	0.19	212	3	0.13
66	3	0.13	139	3	0.33	213	3	0.10
67	3	0.05	140	3	0.18	214	3	0.09
68	3	0.10	141	3	0.24	215	3	0.13
69	3	0.09	142	3	0.11	216	3	0.22
70	3	0.16	143	3	0.22	217	3	0.12
71	3	0.30	144	3	0.26	218	3	0.25
73	3	1.70	145	3	0.13	219	3	0.17
74	3	0.16	146	3	0.16	220	3	0.16
75	3	0.14	147	3	0.40	221	3	0.35
76	3	0.07	148	3	0.18	222	3	0.43
77	3	0.10	149	3	0.25	223	3	0.21
78	3	0.07	151	3	0.09	224	3	0.04
79	3	0.06	152	3	0.16	225	3	0.04
80	3	0.42	153	3	0.27	226	3	0.18
81	3	0.10	154	3	0.15	227	3	0.06
82	3	0.15	155	3	0.30	228	3	0.14
		TOTAL	73.68		4.51			

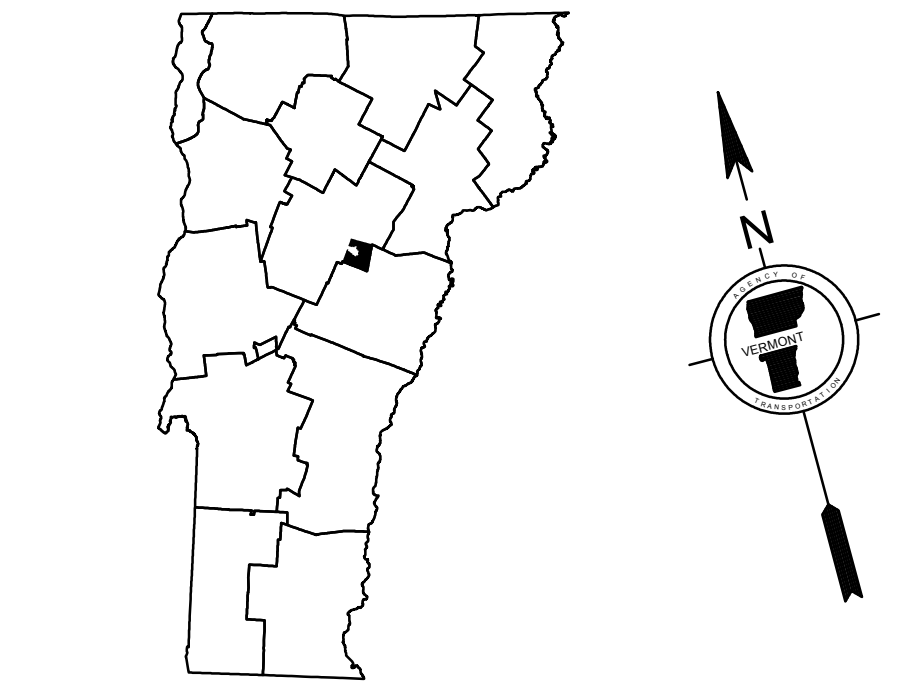
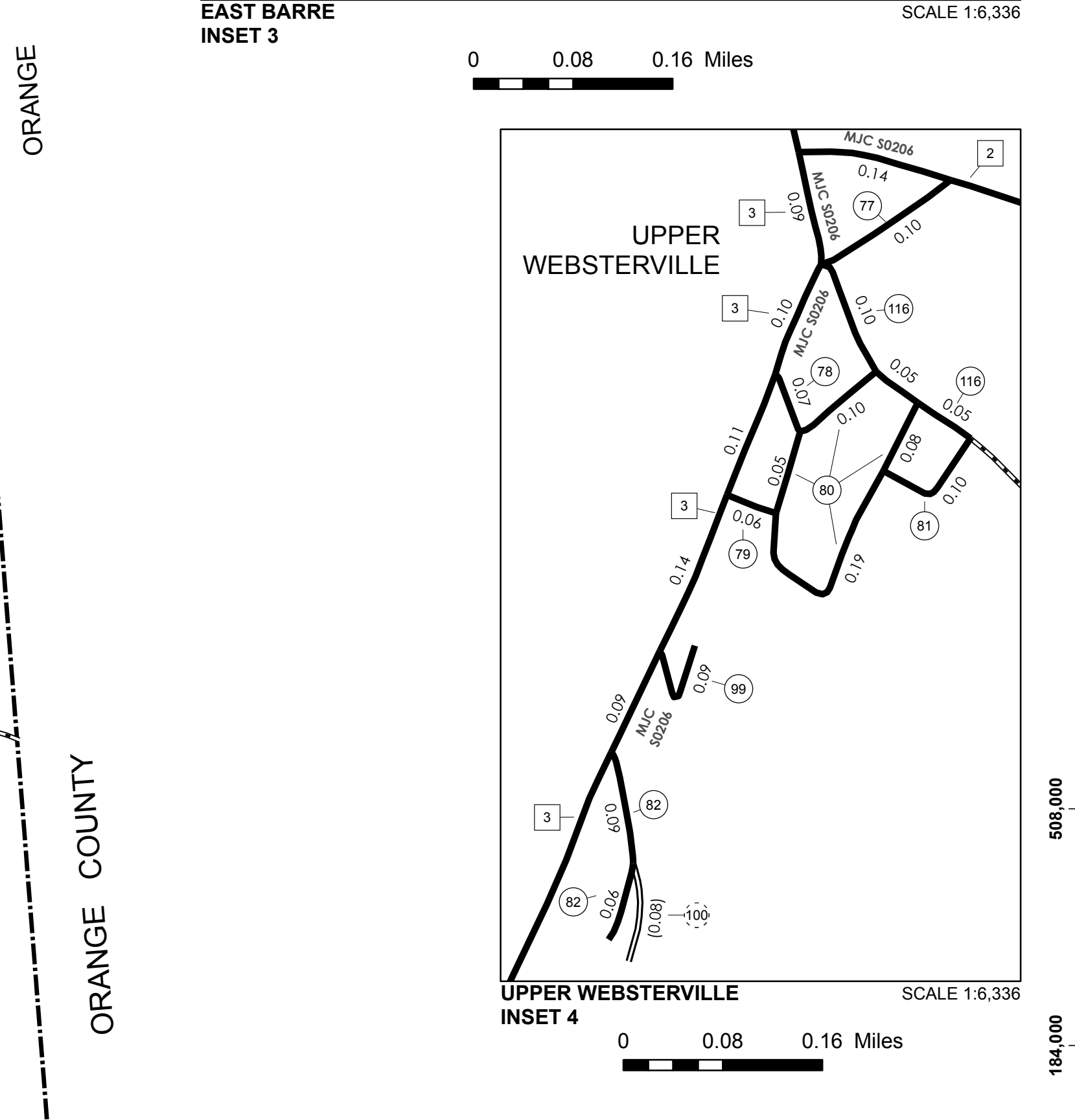
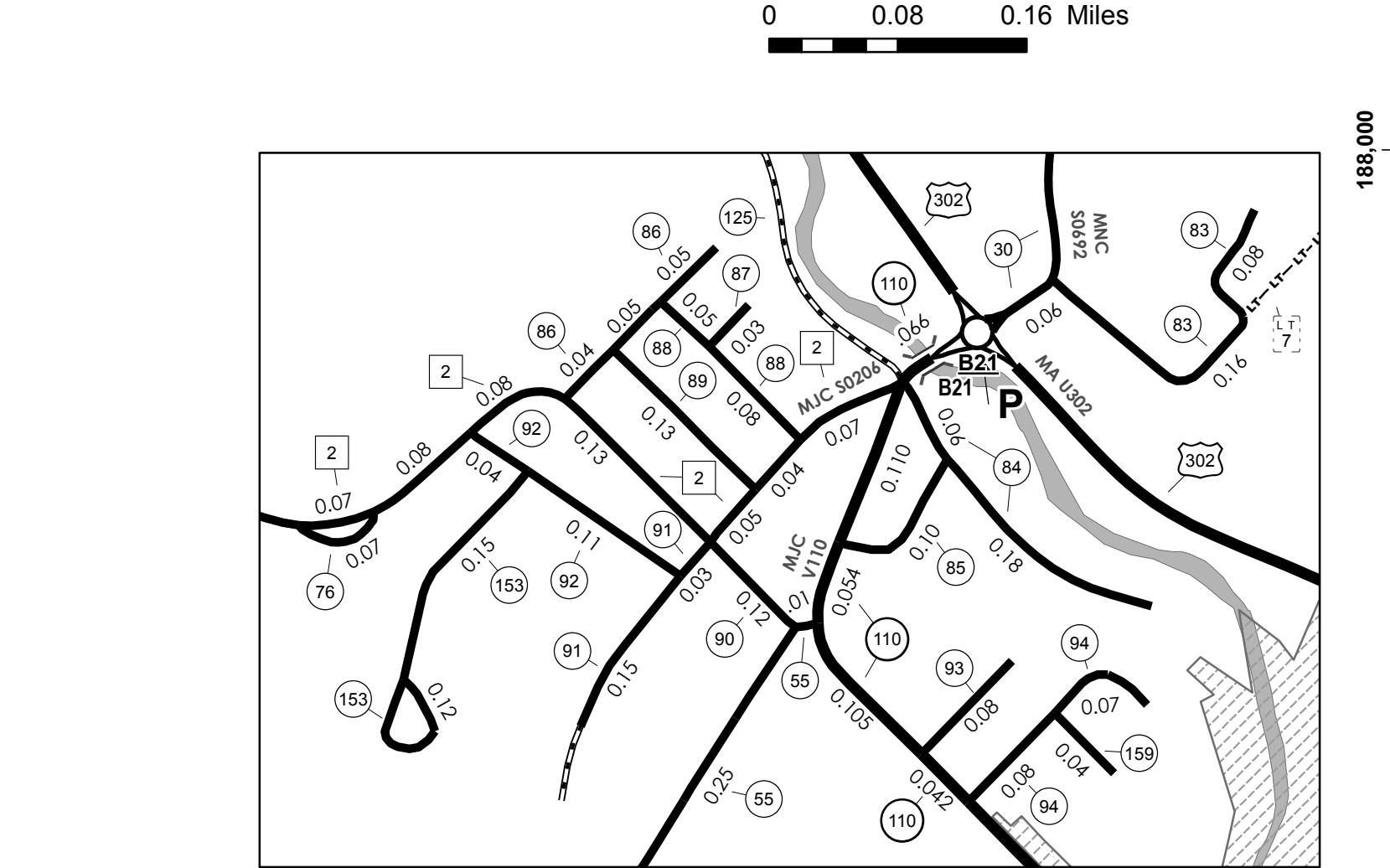
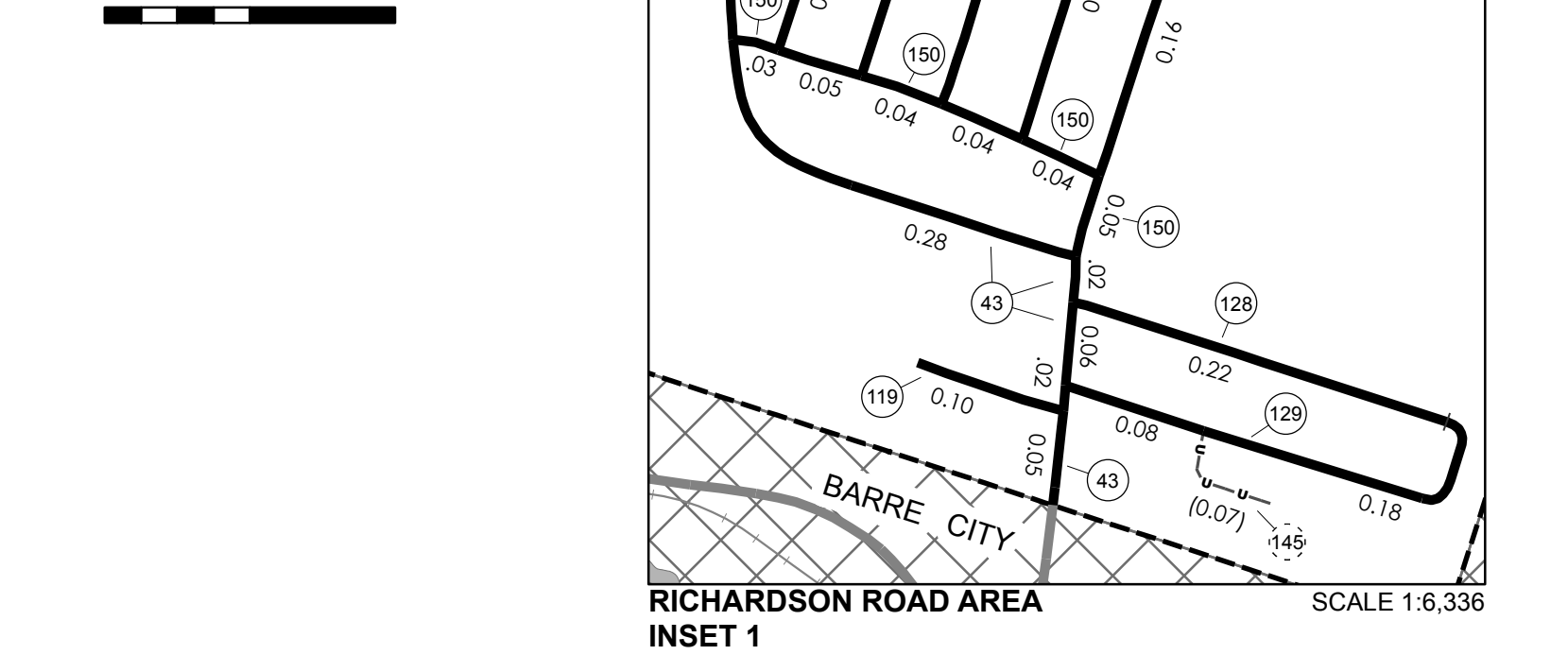
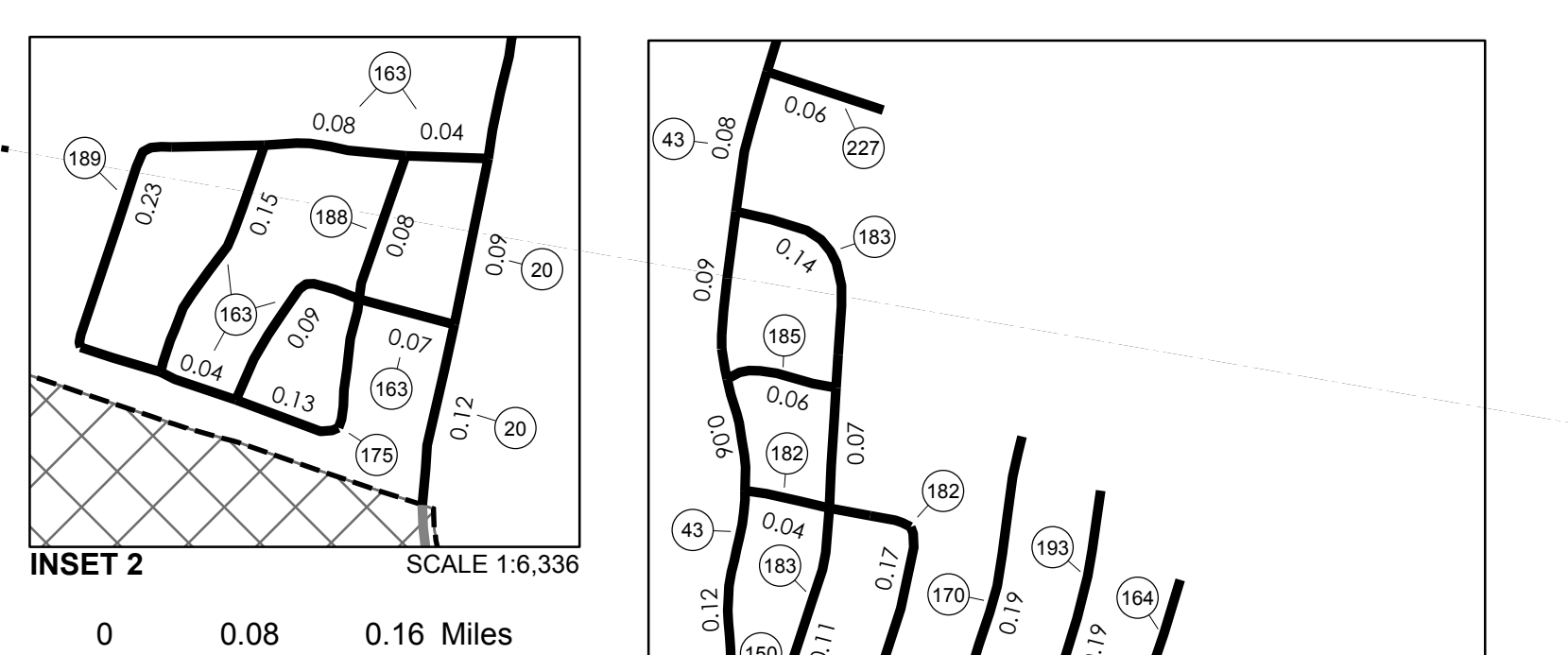
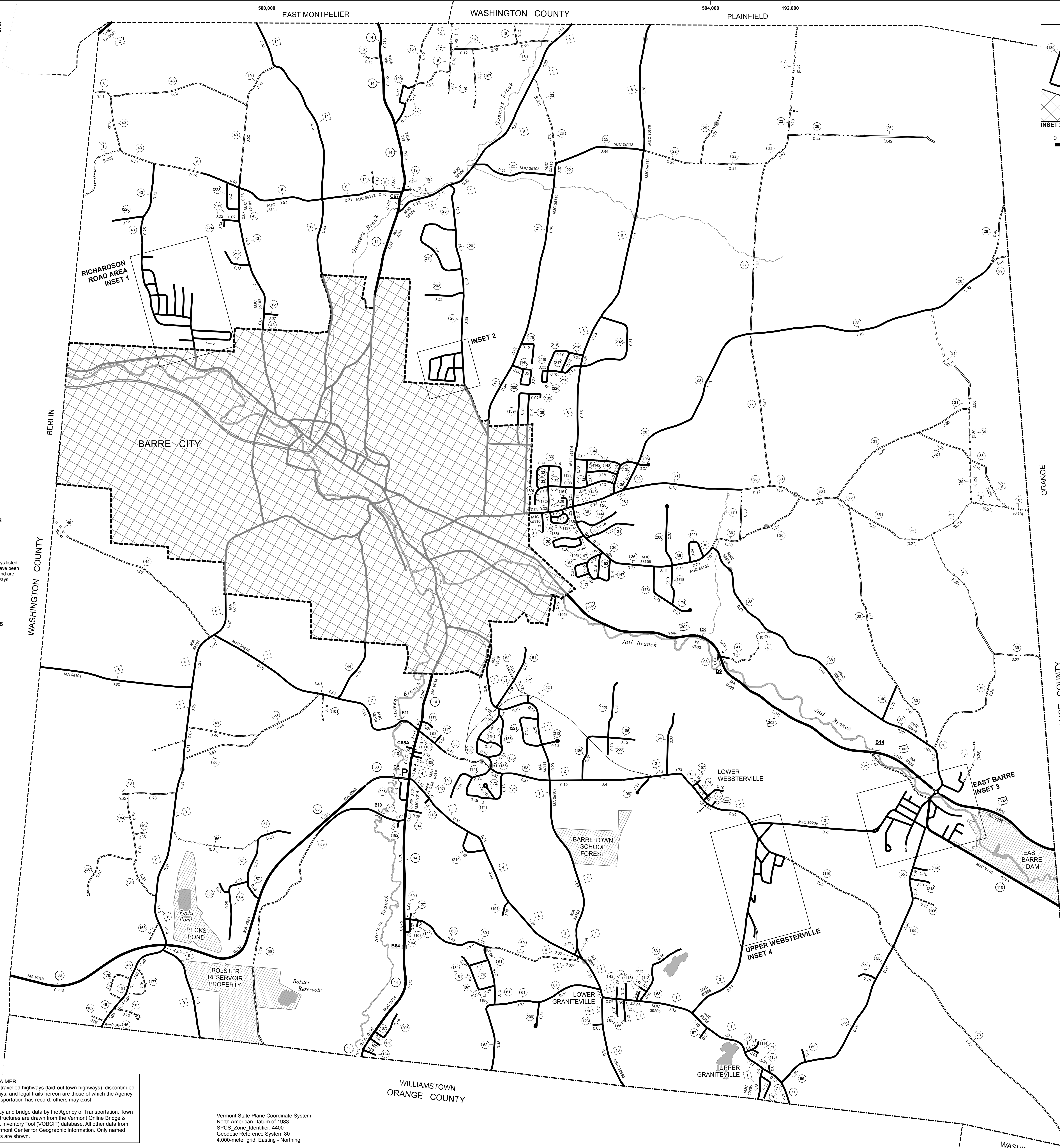
CLASS	LENGTH IN MILES	TOTAL CLASS	CLASS	LENGTH IN MILES	TOTAL CLASS
CLASS 2	21.560		CLASS 3	73.68	
CLASS 3	73.68		TOTAL TOWN	95.240	
STATE HIGHWAY	4.033		LEGAL TRAIL	1.84	
VT-14	2.910		LEGAL TRAIL	1.84	
VT-63	1.123				
VT-110	1.131				
TOTAL STATE HIGHWAY	8.074				
US HIGHWAY	0.085				
US-2	0.085				
US-302	3.413				
TOTAL US HIGHWAY	3.498				
US HIGHWAY - Ramps	0.021				
TOTAL US HIGHWAY - Ramps	0.021				
TOTAL STATE	11.593				
TOTAL, TRAVELED HIGHWAYS, FEB. 10, 2016: 106.833					
<i>(Excludes Class 4 and Legal Trail Mileage)</i>					

- HIGHWAYS**
 - INTERSTATE
 - U.S. ROUTE
 - STATE ROUTE
 - CLASS 1
 - CLASS 2
 - CLASS 3
 - CLASS 4
 - LEGAL TRAIL
 - GRAVEL
 - SOIL OR GRADED AND DRAINED EARTH
 - UNIMPROVED OR PRIMITIVE
 - IMPASSABLE OR UNTRAVELED
 - LEGAL TRAIL
 - DISCONTINUED
 - HIGHWAY CLASS CHANGE
 - RAILROAD
 - INACTIVE RAILROAD
 - PUBLIC LAND - GREEN MOUNTAIN NATIONAL FOREST
 - PUBLIC LAND - STATE/MUNICIPAL
- POLITICAL SUBDIVISIONS**
 - STATE BOUNDARY
 - COUNTY BOUNDARY
 - TOWN BOUNDARY
 - VILLAGE BOUNDARY
 - URBAN COMPACT BOUNDARY
 - WATER BODY
 - STREAM OR BROOK
- BRIDGE OR CULVERT**
 - BRIDGE OR CULVERT > 20'
 - BRIDGE OR CULVERT 6' - 20'
 - VOCBIT BRIDGE
 - VOCBIT CULVERT > 6'
 - B34 / C34 STATE BRIDGE OR CULVERT IDENTIFIER
 - B4 / C4 TOWN BRIDGE OR CULVERT IDENTIFIER
 - NFR NATIONAL FOREST ROAD
 - SHF STATE FOREST HIGHWAY
 - PAK AND RIDG
- FEDERAL CLASSIFICATION IDENTIFIER**
 - FAU URBAN ARTERIAL OR COLLECTOR
 - MA MINOR ARTERIAL
 - MJC MAJOR COLLECTOR
 - MNC MINOR COLLECTOR
 - PA PRINCIPAL ARTERIAL

DISCLAIMER:
The untraveled highways (laid-out town highways), discontinued highways, and legal trails herein are those of which the Agency of Transportation has record; others may exist.

Highway and bridge data by the Agency of Transportation. Town short structures are drawn from the Vermont Online Bridge & Culvert Inventory Tool (VOBCIT) database. All other data from the Vermont Center for Geographic Information. Only named streams are shown.

Vermont State Plane Coordinate System
North American Datum of 1983
SPCS_Zone_Identifier: 4400
Geodetic Reference System 80
4,000-meter grid, Easting - Northing



VERMONT
GENERAL HIGHWAY MAP
Town of Barre
WASHINGTON COUNTY
Transportation District #7
Prepared by the
Vermont Agency of Transportation
Division of Policy, Planning and Intermodal Development
in cooperation with
U.S. Department of Transportation
Federal Highway Administration
Map prepared July 21, 2016
SCALE 1:12,672
0 0.15 0.3 0.45 0.6 Miles
0.2 0.4 0.6 0.8 Kilometers