

TOWN HWY. No.	CLASS	LENGTH IN MILES	TOWN HWY. No.	CLASS	LENGTH IN MILES	TOWN HWY. No.	CLASS	LENGTH IN MILES
8	3	0.14	83	3	0.24	156	3	0.43
9	4	1.58	84	3	0.24	157	3	0.04
10	4	0.35	85	3	0.10	158	3	0.04
13	4	0.14	86	3	0.14	160	3	0.10
14	4	0.10	87	3	0.03	161	3	0.08
15	4	0.87	88	3	0.13	162	3	0.21
16	4	1.00	89	3	0.13	163	3	0.47
17	4	0.13	90	3	0.12	164	3	0.16
18	4	0.05	91	3	0.07	167	3	0.18
19	4	0.05	92	3	0.15	168	3	0.12
20	4	1.22	93	3	0.08	169	3	0.11
21	4	1.51	94	3	0.15	170	3	0.19
22	4	2.28	95	3	0.07	171	3	0.58
23	4	0.27	96	3	0.04	172	3	0.09
24	4	0.35	97	3	0.09	173	3	0.48
26	4	0.44	100	3	0.16	174	3	0.17
27	4	1.95	101	3	0.16	175	3	0.13
28	4	3.60	102	3	0.08	176	3	0.26
29	4	0.10	103	3	0.07	177	3	0.26
30	4	3.22	104	3	0.03	178	3	0.19
31	4	1.06	105	3	0.09	179	3	0.11
32	4	0.35	106	3	0.13	180	3	0.09
33	4	0.16	107	3	0.06	181	3	0.22
34	4	0.30	108	3	0.06	182	3	0.21
35	4	0.34	109	3	0.05	183	3	0.32
36	4	1.75	110	3	0.04	184	3	0.65
37	4	0.30	111	3	0.07	185	3	0.06
38	4	1.77	112	3	0.05	186	3	0.53
39	4	1.05	113	3	0.06	187	3	0.18
40	4	0.80	114	3	0.05	188	3	0.08
41	4	0.21	115	3	0.06	189	3	0.23
42	4	0.08	116	3	0.05	190	3	0.22
43	4	4.20	117	3	0.06	192	3	0.04
44	4	0.37	118	3	0.03	193	3	0.19
45	4	0.67	119	3	0.10	194	3	0.10
46	4	0.53	120	3	0.10	195	3	0.42
48	4	0.33	121	3	0.30	196	3	0.06
49	4	0.45	122	3	0.04	197	3	0.35
50	4	0.95	123	3	0.05	198	3	0.11
51	4	0.40	124	3	0.08	199	3	0.19
52	4	0.16	125	3	0.47	200	3	0.27
53	4	0.91	127	3	0.03	201	3	0.10
54	4	0.35	128	3	0.22	202	3	0.61
55	4	1.99	129	3	0.20	203	3	0.23
56	4	0.60	130	3	0.07	204	3	0.41
57	4	2.00	131	3	0.11	205	3	0.09
60	4	1.16	133	3	0.51	207	3	0.53
61	4	1.00	134	3	0.26	208	3	0.36
62	4	0.45	135	3	0.26	209	3	0.13
63	4	0.40	136	3	0.23	210	3	0.23
64	4	0.10	137	3	0.07	211	3	0.60
65	4	0.10	138	3	0.19	212	3	0.13
66	4	0.13	139	3	0.33	213	3	0.10
67	4	0.05	140	3	0.16	214	3	0.09
68	4	0.10	141	3	0.24	215	3	0.13
69	4	0.09	142	3	0.11	216	3	0.22
70	4	0.16	143	3	0.22	217	3	0.12
71	4	0.30	144	3	0.26	218	3	0.25
73	4	1.70	145	3	0.13	219	3	0.17
74	4	0.16	146	3	0.16	220	3	0.16
75	4	0.14	147	3	0.40	221	3	0.35
76	4	0.07	148	3	0.18	222	3	0.43
77	4	0.10	149	3	0.25	223	3	0.21
78	4	0.07	151	3	0.09	224	3	0.04
79	4	0.06	152	3	0.16	225	3	0.04
80	4	0.42	153	3	0.27	226	3	0.18
81	4	0.10	154	3	0.15	227	3	0.06
82	4	0.15	155	3	0.30	228	3	0.14
		TOTAL	73.62	CLASS 4	4.51			

MILEAGE SUMMARY CLASS 2	TOWN HWY. No.	LENGTH IN MILES "NOT UP TO STANDARD"
TH-1	3.850	
TH-2	2.860	(0.09)
TH-3	1.270	(0.04)
TH-4	1.590	
TH-5	1.590	
TH-6	1.510	
TH-7	1.450	
TH-8	3.320	
TH-9	2.150	
TH-10	0.540	
TH-12	1.640	
TOTAL CLASS 2	21.560	
TOTAL CLASS 3	73.62	
TOTAL TOWN	95.180	

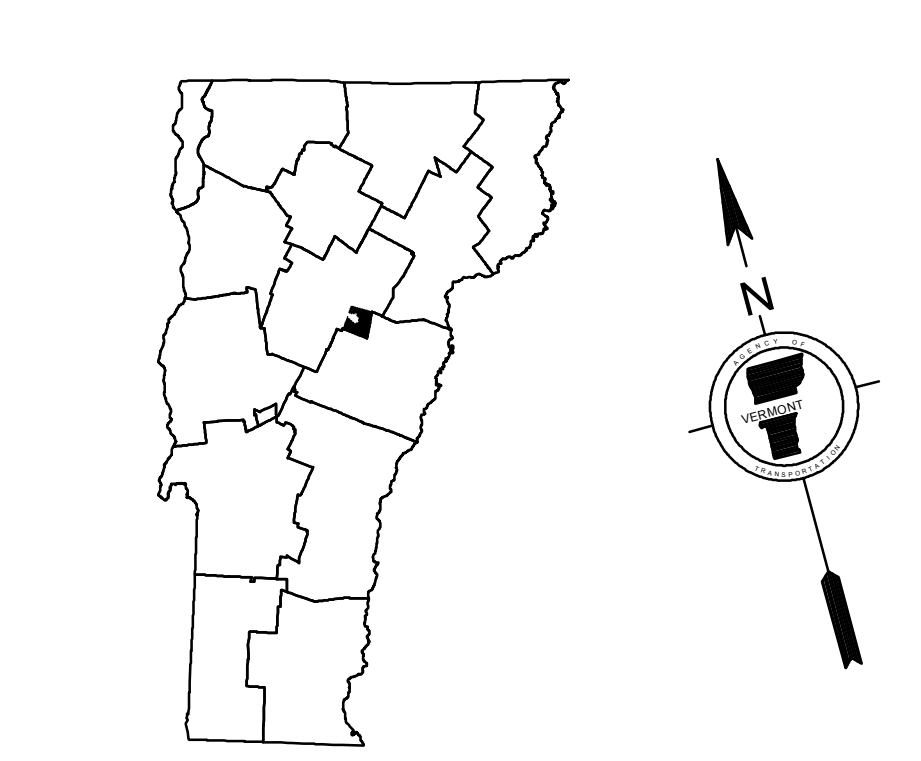
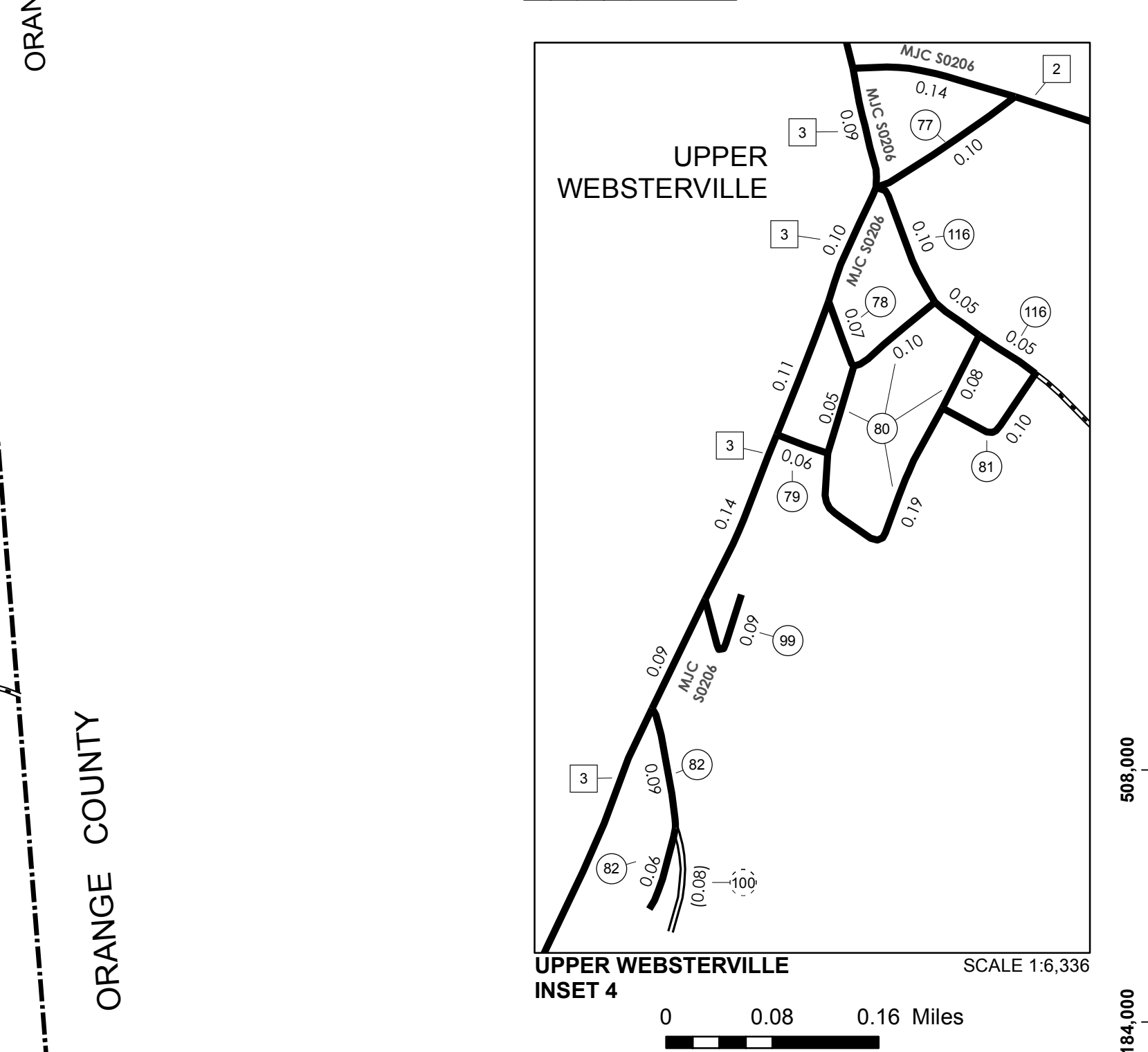
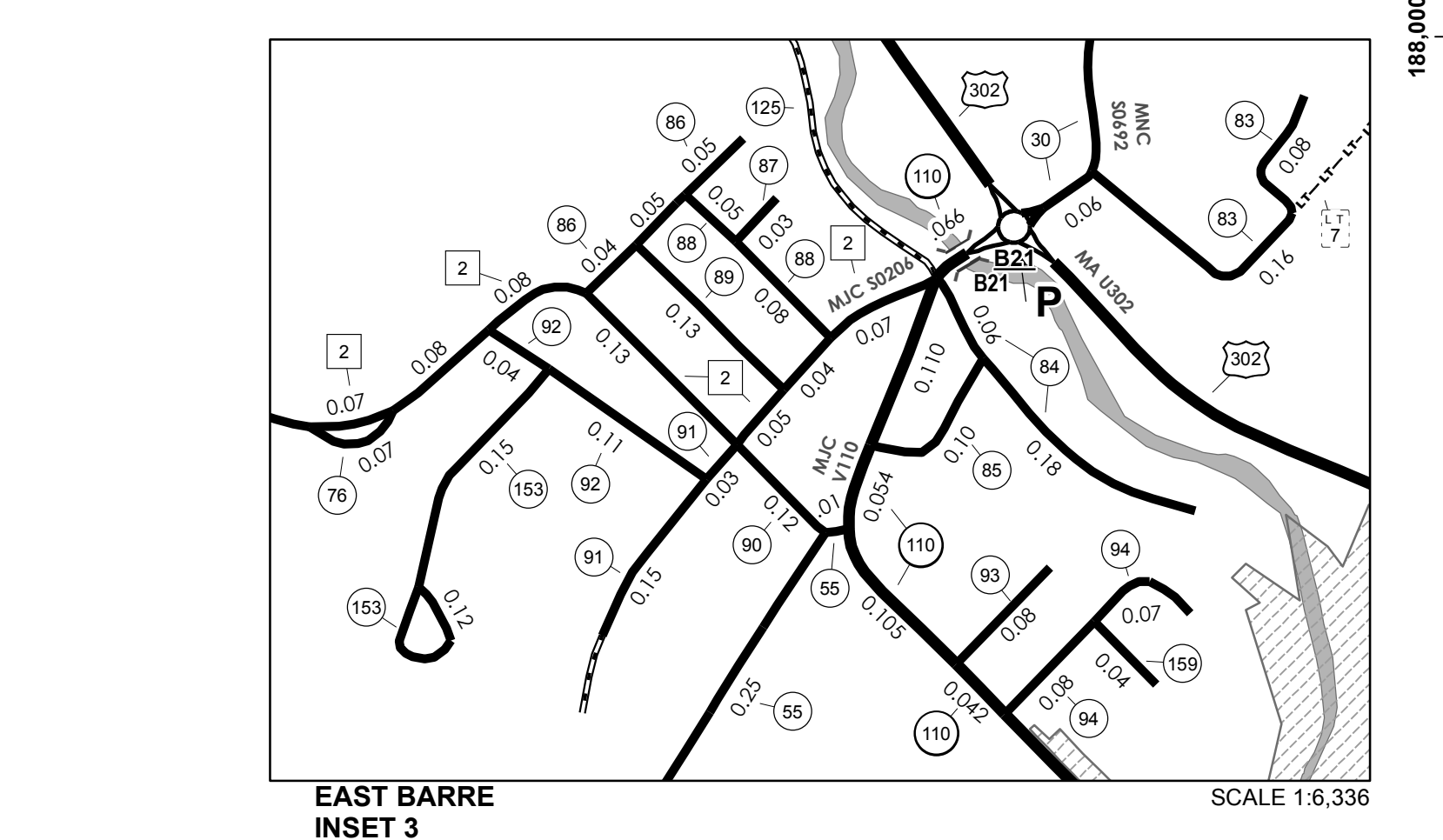
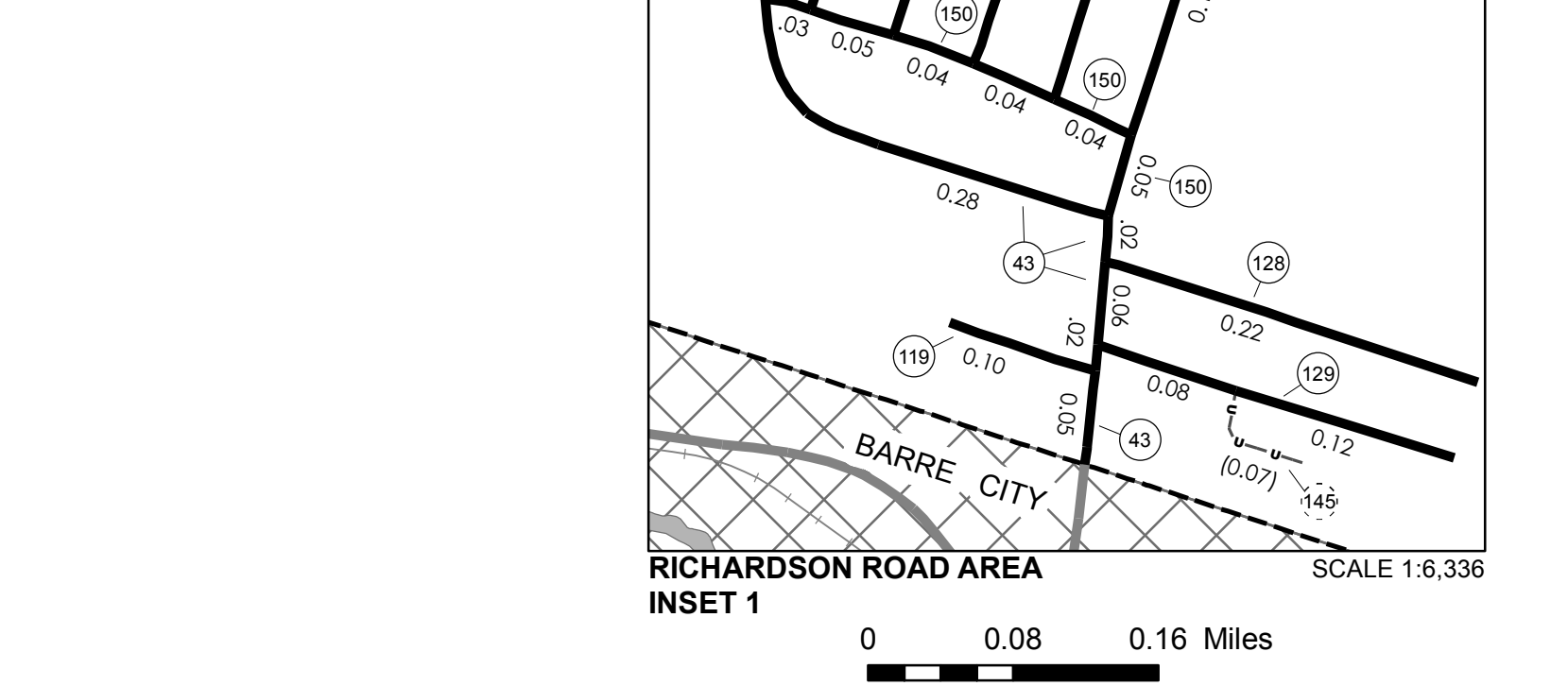
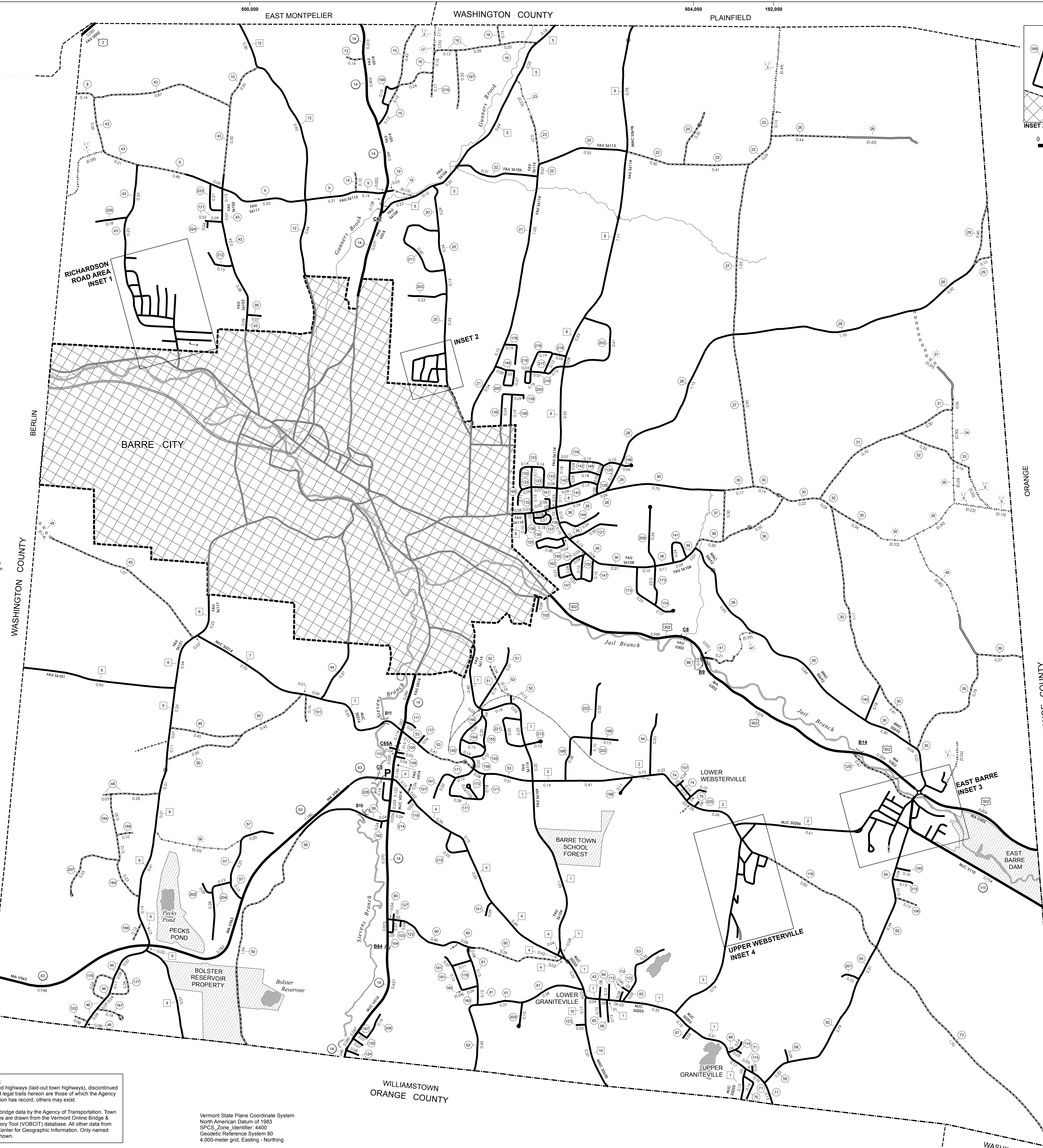
The sections of the town highways listed above are legally Class 3, but have been deemed "Not Up to Standard" and are functionally Class 4 Town Highways.

LEGAL TRAIL	LENGTH IN MILES LEGAL TRAIL
1	(0.38)
2	(0.11)
3	(0.49)
5	(0.38)
6	(0.22)
7	(0.26)
TOTAL	1.84

STATE HIGHWAY	LENGTH IN MILES
VT-14	4.033
VT-63	2.910
VT-110	1.131
TOTAL STATE HIGHWAY	8.074
US HIGHWAY	0.085
US-302	3.413
TOTAL US HIGHWAY	3.498
US HIGHWAY - Ramps	0.021
TOTAL US HIGHWAY - Ramps	0.021
TOTAL STATE	11.593

TOTAL, TRAVELED HIGHWAYS, FEB. 10, 2015: 106.773
(Excludes Class 4, Legal Trail, and Undeveloped Corridor Mileage)

- HIGHWAYS**
 - INTERSTATE
 - U.S. ROUTE
 - STATE ROUTE
 - CLASS 1
 - CLASS 2
 - CLASS 3
 - CLASS 4
 - LEGAL TRAIL
 - GRAVEL
 - SOIL OR GRADED AND DRAINED EARTH
 - UNIMPROVED OR PRIMITIVE
 - IMPASSABLE OR UNTRAVELED
 - LEGAL TRAIL
 - DISCONTINUED
 - HIGHWAY CLASS CHANGE
 - RAILROAD
 - INACTIVE RAILROAD
 - PUBLIC LAND - GREEN MOUNTAIN NATIONAL FOREST
 - PUBLIC LAND - STATE/MUNICIPAL
- POLITICAL SUBDIVISIONS**
 - STATE BOUNDARY
 - COUNTY BOUNDARY
 - TOWN BOUNDARY
 - VILLAGE BOUNDARY
 - URBAN COMPACT BOUNDARY
 - WATER BODY
 - STREAM OR BROOK
- BRIDGE OR CULVERT**
 - BRIDGE OR CULVERT > 20'
 - BRIDGE OR CULVERT 6' - 20'
 - VOBCIT BRIDGE
 - VOBCIT CULVERT > 6'
 - B34 / C34 STATE BRIDGE OR CULVERT IDENTIFIER
 - B34 / C34 TOWN BRIDGE OR CULVERT IDENTIFIER
 - NFR NATIONAL FOREST ROAD
 - SFH STATE FOREST HIGHWAY
 - PARK AND RECREATION
- FEDERAL CLASSIFICATION IDENTIFIER**
 - FAU URBAN ARTERIAL OR COLLECTOR
 - MA MINOR ARTERIAL
 - MJC MAJOR COLLECTOR
 - MNC MINOR COLLECTOR
 - PA PRINCIPAL ARTERIAL



VERMONT
GENERAL HIGHWAY MAP
Town of Barre
WASHINGTON COUNTY
Transportation District #6
Prepared by the
Vermont Agency of Transportation
Division of Policy, Planning and Intermodal Development
in cooperation with
U.S. Department of Transportation
Federal Highway Administration
Map as of February 10, 2015
Map prepared June 16, 2015
SCALE 1:12,672
0 0.15 0.3 0.45 0.6 Miles
0.2 0 0.2 0.4 0.6 0.8 Kilometers