

| TOWN HWY. NO. | LENGTH IN MILES CLASS 3 | LENGTH IN MILES CLASS 4 | TOWN HWY. NO. | LENGTH IN MILES CLASS 3 | LENGTH IN MILES CLASS 4 | TOWN HWY. NO. | LENGTH IN MILES CLASS 3 | LENGTH IN MILES CLASS 4 |
|---------------|-------------------------|-------------------------|---------------|-------------------------|-------------------------|---------------|-------------------------|-------------------------|
| 8 | 0.14 | | 83 | 0.24 | | 159 | 0.04 | |
| 9 | 1.58 | | 84 | 0.24 | | 160 | 0.10 | |
| 10 | 0.35 | | 85 | 0.10 | | 161 | 0.08 | |
| 13 | 0.14 | | 86 | 0.14 | | 162 | 0.21 | |
| 14 | 0.10 | | 87 | 0.03 | | 163 | 0.47 | |
| 15 | 0.67 | | 88 | 0.13 | | 164 | 0.16 | |
| 16 | 1.00 | | 89 | 0.13 | | 167 | 0.07 | |
| 17 | 0.13 | (0.05) | 90 | 0.12 | | 168 | 0.12 | |
| 18 | 0.13 | | 91 | 0.18 | | 169 | 0.11 | |
| 19 | 0.05 | (0.15) | 92 | 0.15 | | 170 | 0.19 | |
| 20 | 2.22 | | 93 | 0.08 | | 171 | 0.58 | |
| 21 | 1.51 | | 94 | 0.15 | | 172 | 0.09 | |
| 22 | 2.26 | | 95 | 0.07 | | 173 | 0.48 | |
| 23 | 0.27 | (0.23) | 98 | 0.04 | | 174 | 0.17 | |
| 25 | 0.35 | | 99 | 0.09 | | 175 | 0.13 | |
| 26 | 0.44 | (0.33) | 100 | | (0.08) | 176 | 0.26 | |
| 27 | 1.95 | | 101 | 0.16 | | 177 | 0.26 | |
| 28 | 3.60 | | 102 | 0.08 | | 178 | 0.19 | |
| 29 | 0.10 | | 103 | 0.07 | | 179 | 0.11 | |
| 30 | 3.22 | | 104 | 0.03 | | 180 | 0.09 | |
| 31 | 1.06 | (0.59) | 105 | 0.09 | | 180 | | (0.04) |
| 32 | 0.35 | | 106 | 0.13 | | 181 | 0.22 | |
| 33 | 0.16 | (0.38) | 107 | 0.06 | | 182 | 0.21 | |
| 34 | 0.34 | (0.30) | 108 | 0.06 | | 183 | 0.32 | |
| 35 | 0.70 | (0.77) | 109 | 0.05 | | 184 | 0.65 | |
| 36 | 1.75 | | 110 | 0.04 | | 185 | 0.06 | |
| 37 | 0.30 | | 111 | 0.07 | | 186 | 0.53 | |
| 38 | 1.77 | | 112 | 0.05 | (0.04) | 187 | 0.18 | |
| 39 | 1.05 | | 113 | 0.08 | | 188 | 0.08 | |
| 40 | | (0.80) | 114 | 0.05 | | 189 | 0.23 | |
| 41 | 0.21 | (0.29) | 115 | 0.06 | | 191 | 0.22 | |
| 42 | 0.08 | | 116 | 1.05 | | 192 | 0.04 | |
| 43 | 4.20 | | 117 | 0.06 | | 193 | 0.19 | |
| 44 | 0.37 | | 118 | 0.03 | | 194 | 0.10 | |
| 45 | 0.07 | (0.14) | 119 | 0.10 | | 195 | 0.42 | |
| 46 | 0.67 | | 120 | 0.10 | | 196 | 0.06 | |
| 48 | 0.33 | | 121 | 0.30 | | 197 | 0.35 | |
| 49 | 0.45 | | 122 | 0.04 | | 198 | 0.11 | |
| 50 | 0.95 | | 123 | 0.05 | | 199 | 0.19 | |
| 51 | 0.40 | | 124 | 0.08 | | 200 | 0.27 | |
| 52 | 0.16 | (0.12) | 125 | 0.47 | | 201 | 0.10 | |
| 53 | 0.91 | | 126 | 0.07 | | 202 | 0.61 | |
| 54 | 0.35 | | 127 | 0.03 | | 203 | 0.23 | |
| 55 | 1.99 | (0.55) | 128 | 0.11 | | 204 | 0.41 | |
| 57 | 0.60 | | 129 | 0.20 | | 205 | 0.09 | |
| 59 | 2.00 | | 130 | 0.07 | | 206 | 0.16 | |
| 60 | 1.16 | | 131 | 0.11 | | 207 | 0.53 | |
| 61 | 1.00 | | 132 | 0.26 | | 208 | 0.36 | |
| 62 | 0.45 | | 133 | 0.51 | | 209 | 0.13 | |
| 63 | 0.40 | | 134 | 0.26 | | 210 | 0.23 | |
| 64 | 0.10 | | 135 | 0.26 | | 211 | 0.60 | |
| 65 | 0.10 | | 136 | 0.23 | | 212 | 0.13 | |
| 66 | 0.13 | | 137 | 0.07 | | 213 | 0.10 | |
| 67 | 0.05 | | 138 | 0.19 | | 214 | 0.09 | |
| 68 | 0.10 | | 139 | 0.33 | | 215 | 0.13 | |
| 69 | 0.09 | | 140 | 0.18 | | 216 | 0.22 | |
| 70 | 0.16 | | 141 | 0.24 | | 217 | 0.12 | |
| 71 | 0.30 | | 142 | 0.11 | | 218 | 0.25 | |
| 73 | 1.70 | | 143 | 0.22 | | 219 | 0.17 | |
| 74 | 0.16 | | 144 | 0.26 | | 220 | 0.16 | |
| 75 | 0.14 | | 145 | | (0.07) | 221 | 0.35 | |
| 76 | 0.07 | | 146 | 0.13 | | 222 | 0.43 | |
| 77 | 0.10 | | 147 | 0.40 | | 223 | 0.21 | |
| 78 | 0.07 | | 148 | 0.18 | | 224 | 0.04 | |
| 79 | 0.05 | | 149 | 0.25 | | 225 | 0.04 | |
| 80 | 0.42 | | 150 | 0.09 | | 226 | 0.18 | |
| 81 | 0.10 | | 151 | 0.09 | | 227 | 0.06 | |
| 82 | 0.15 | | 152 | 0.27 | | 228 | 0.14 | |
| | | | 153 | 0.15 | | | | |
| | | | 154 | 0.15 | | | | |
| | | | 155 | 0.30 | | | | |
| | | | 156 | 0.43 | | | | |
| | | | 157 | 0.04 | | | | |

TOTAL 73.58 5.02
 * This portion of town highway is Class 3, but is functionally Class 4

| CLASS | TRAIL NO. | LENGTH IN MILES |
|---------------------|-----------|-----------------|
| CLASS 2 | | |
| TH-1 | 3 | 850 |
| TH-2 | 1 | 270 |
| TH-3 | 1 | 1,270 |
| TH-4 | 1 | 1,590 |
| TH-5 | 1 | 1,580 |
| TH-6 | 1 | 1,510 |
| TH-7 | 1 | 1,450 |
| TH-8 | 1 | 3,320 |
| TH-9 | 1 | 2,150 |
| TH-10 | 1 | 0,540 |
| TH-12 | 1 | 1,640 |
| TOTAL CLASS 2 | | 21,560 |
| CLASS 3 | | |
| TOTAL CLASS 3 | | 73,580 |
| TOTAL TOWN | | 95,140 |
| STATE HIGHWAY | | |
| VT-14 | 4 | 0,033 |
| VT-63 | 2 | 2,910 |
| VT-110 | 1 | 1,131 |
| TOTAL STATE HIGHWAY | | 8,074 |
| US HIGHWAY | | |
| US-2 | 0 | 0,085 |
| US-302 | 3 | 3,434 |
| TOTAL US HIGHWAY | | 3,519 |
| TOTAL STATE | | 11,593 |

TOTAL, TRAVELED HIGHWAYS, FEB. 10, 2011: 106,733
 (Excludes Class 4, Legal Trail, and Undeveloped Corridor Mileage)

- HIGHWAYS**
 - INTERSTATE
 - U.S. ROUTE
 - STATE ROUTE
 - CLASS 1
 - CLASS 2
 - CLASS 3
 - CLASS 4
 - LEGAL TRAIL
 - INTERSTATE OR DIVIDED HIGHWAY
 - STATE - HARD SURFACE OR PAVED
 - TOWN - HARD SURFACE OR PAVED
 - GRAVEL
 - SOIL OR GRADED AND DRAINED EARTH
 - UNIMPROVED OR PRIMITIVE
 - IMPASSABLE OR UNTRAVELED
 - LEGAL TRAIL
 - DISCONTINUED
 - HIGHWAY CLASS CHANGE
 - RAILROAD
 - INACTIVE RAILROAD
 - PARK AND RIDE
- PUBLIC LAND**
- POLITICAL SUBDIVISIONS**
 - STATE BOUNDARY
 - COUNTY BOUNDARY
 - TOWN BOUNDARY
 - VILLAGE BOUNDARY
 - URBAN COMPACT BOUNDARY
- WATER BODY**
 - STREAM OR BROOK
- BRIDGE OR CULVERT**
 - BRIDGE OR CULVERT GREATER THAN 20'
 - BRIDGE OR CULVERT 6' - 20'
 - TOWN SHORT STRUCTURE
 - B34 / C34 STATE BRIDGE OR CULVERT IDENTIFIER
 - B34 / C34 TOWN BRIDGE OR CULVERT IDENTIFIER
- FEDERAL CLASSIFICATION IDENTIFIER**
 - FAU - URBAN ARTERIAL OR COLLECTOR
 - MA - MINOR ARTERIAL
 - MJC - MAJOR COLLECTOR
 - MNC - MINOR COLLECTOR
 - PA - PRINCIPAL ARTERIAL

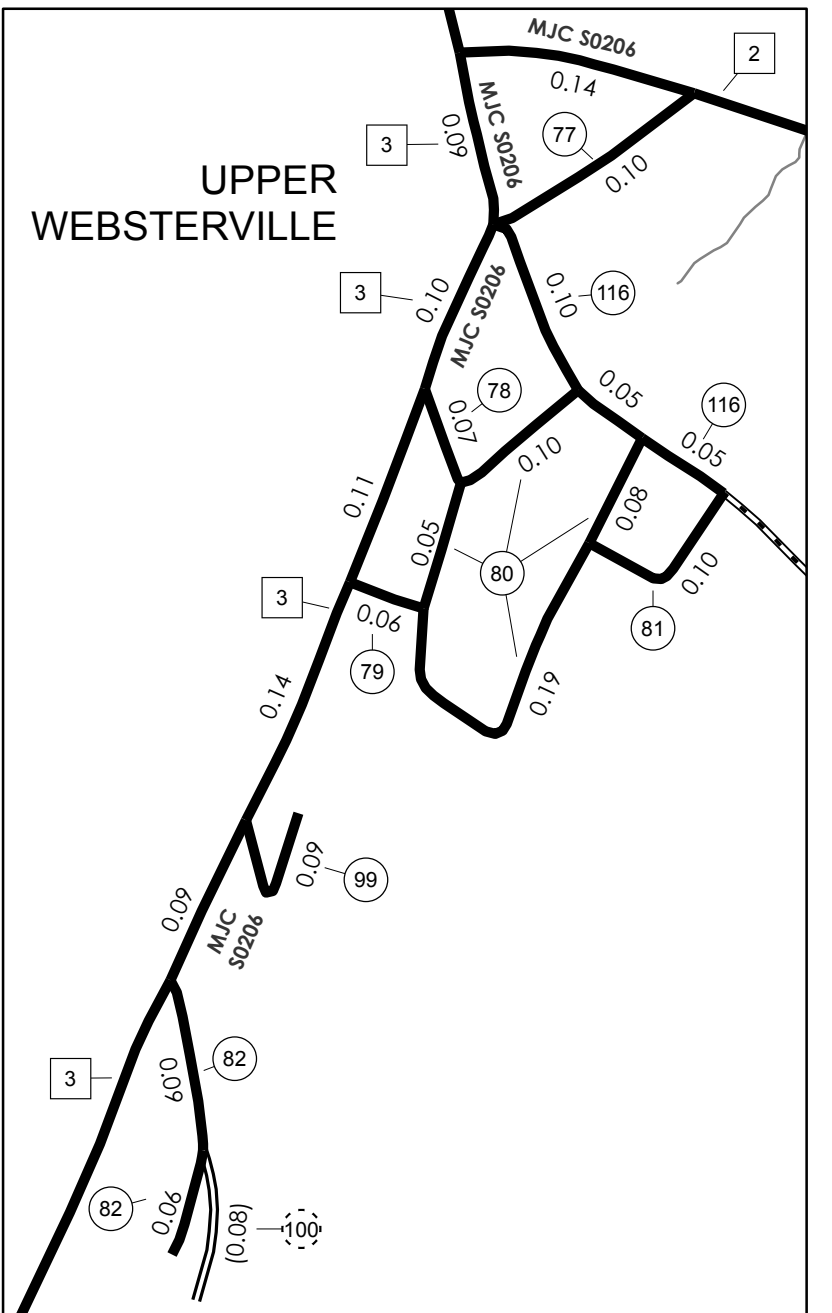
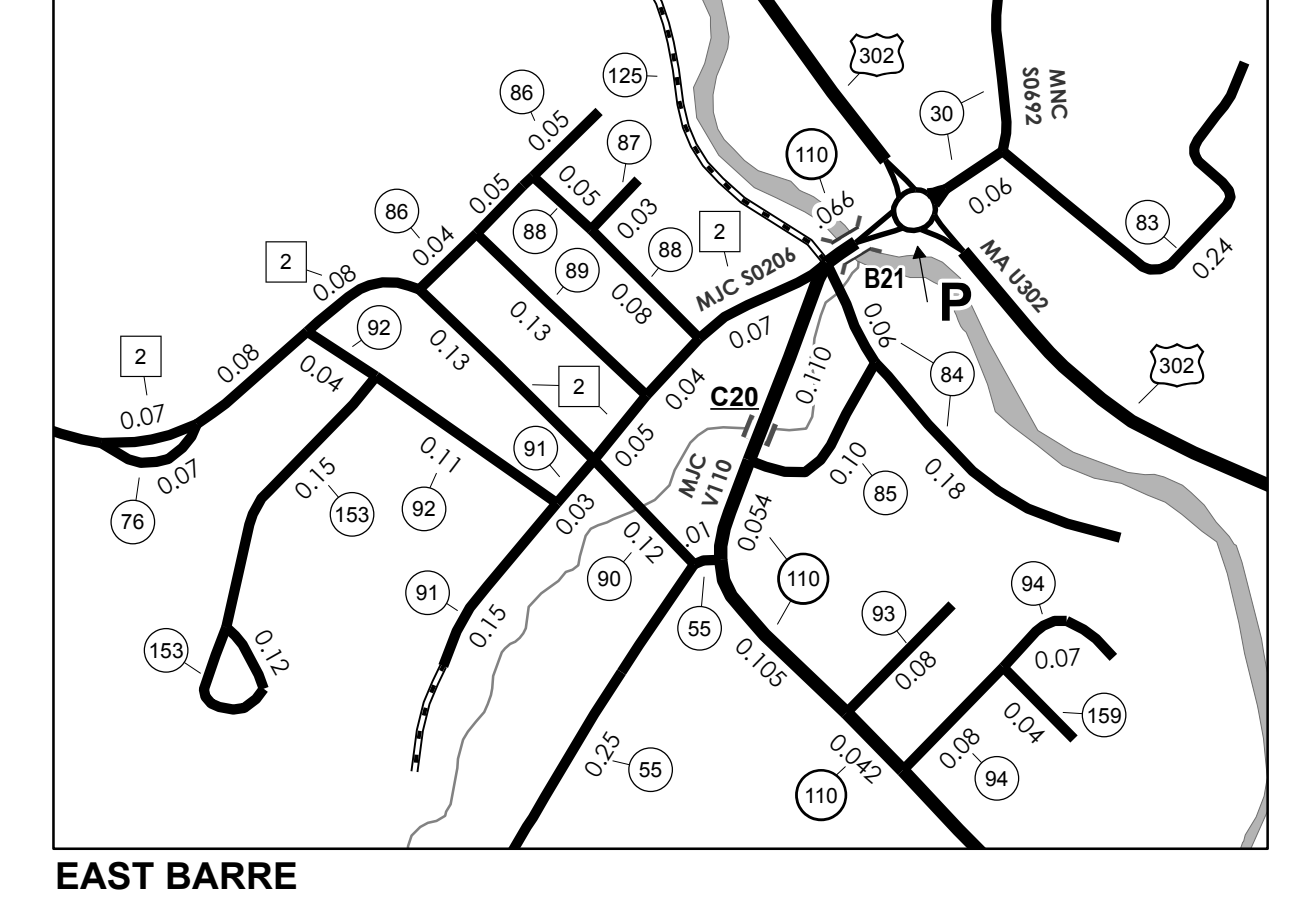
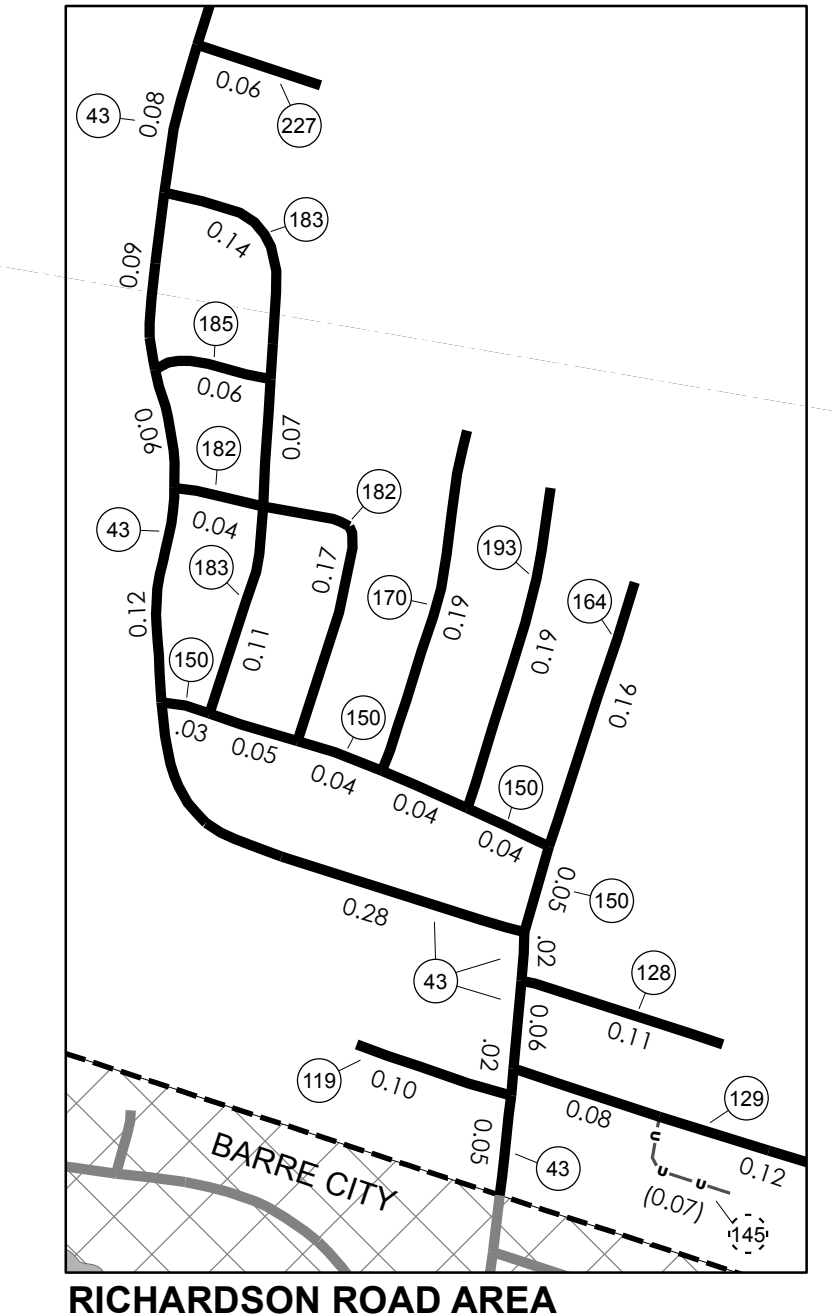
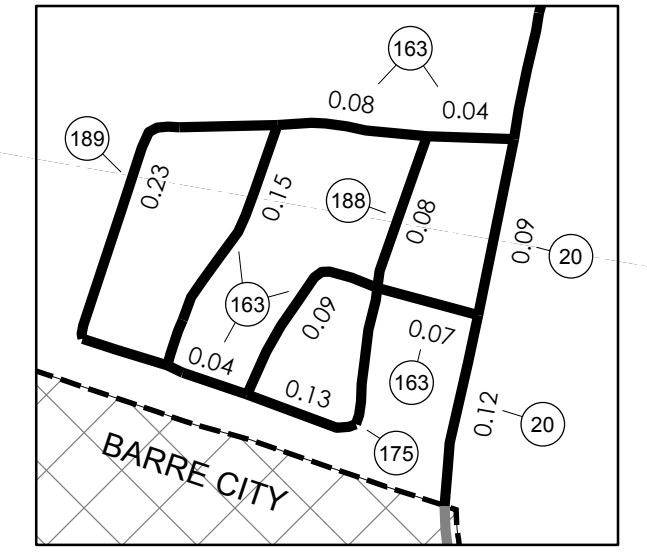
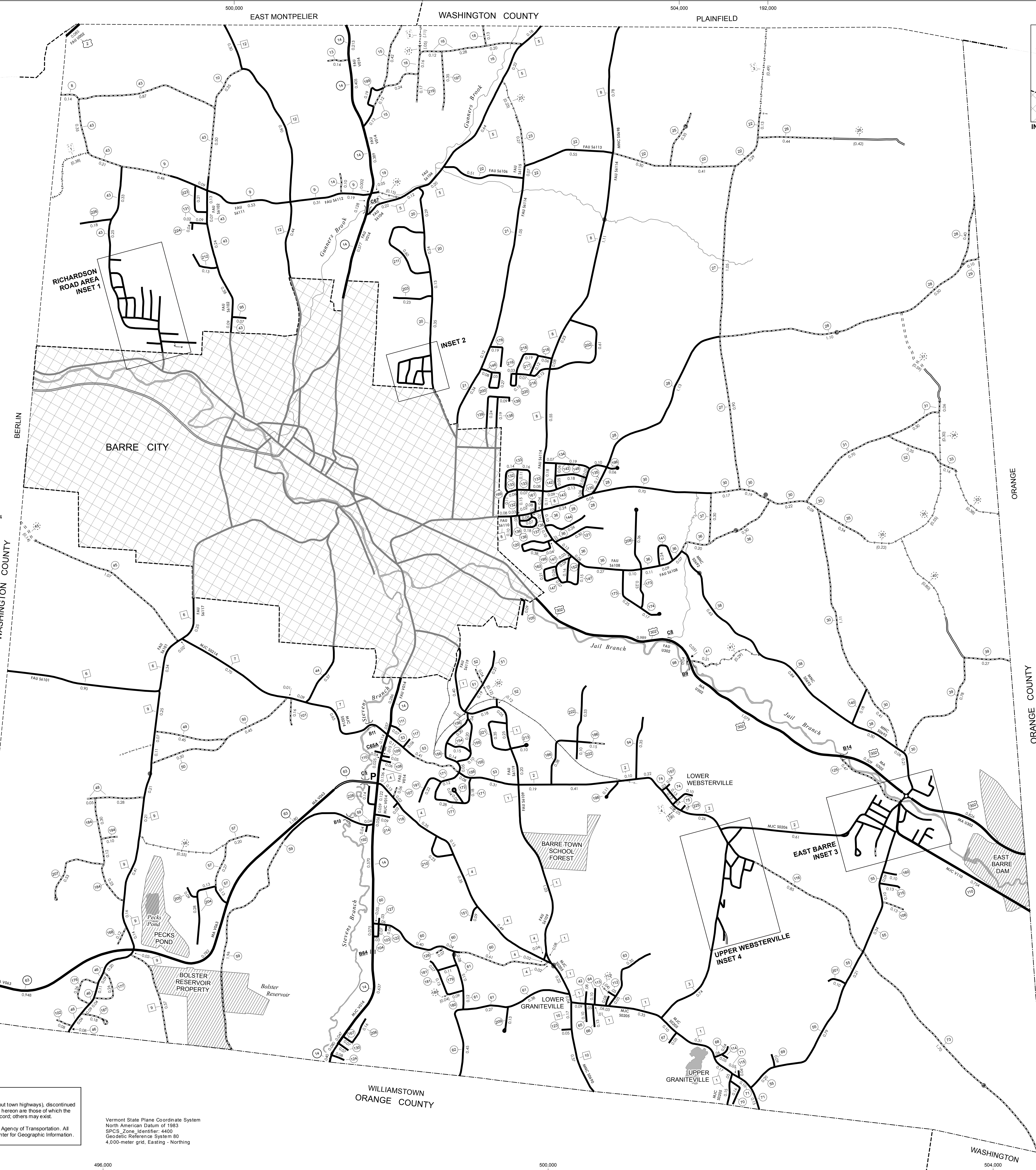
STRUCTURES - SURFACE WATER NOTE:
 Town short structures (bridges or culverts from 6-feet to less than 20-feet) are drawn from the Vermont Online Bridge & Culvert Inventory Tool (VOBCIT) database.
 NOTE: Town shorts are not consistently tagged within VOBCIT.

SURFACE WATERS:
 The surface waters are from the Vermont Hydrological Dataset (VHD). Only the named streams are shown.

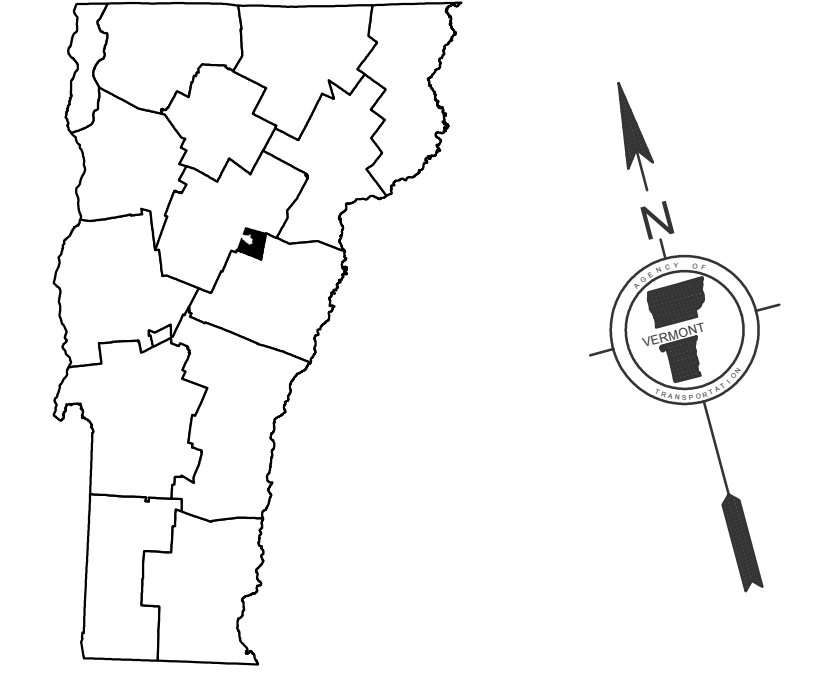
DISCLAIMER:
 The untraveled highways (laid-out town highways), discontinued highways, and legal trails shown hereon are those of which the Agency of Transportation has record information.

Highway and bridge data by the Agency of Transportation. All other data from the Vermont Center for Geographic Information.

Vermont State Plane Coordinate System
 North American Datum of 1983
 SPCS Zone Identifier: 4400
 Geographic Reference System: 83
 4,000-meter grid, Easting - Northing



SCALE FOR INSETS 1:6336
 0 0.1 0.2 Miles



VERMONT GENERAL HIGHWAY MAP
Town of Barre
 WASHINGTON COUNTY

Transportation District #6
 Prepared by the Vermont Agency of Transportation
 Division of Policy, Planning & Intermodal Development
 in cooperation with
 U.S. Department of Transportation
 Federal Highway Administration

Mileage as of February 10, 2011
 Map prepared October 26, 2011
 SCALE 1:12,672
 0.2 0 0.2 0.4 0.6 0.8 Miles
 0.4 0 0.4 0.8 Kilometers