

TOWN HWY. NO.	CLASS 3	CLASS 4	TOWN HWY. NO.	CLASS 3	CLASS 4	TOWN HWY. NO.	CLASS 3	CLASS 4
8	0.140		83	0.240		159	0.040	
9	1.580		84	0.240		160	0.100	
10	0.350		85	0.100		161	0.080	
13	0.140		86	0.140		162	0.210	
14	0.100		87	0.030		163	0.470	
15	0.670		88	0.130		164	0.160	
16	1.000		89	0.130		167	0.070	
17		(0.050)	90	0.120		168	0.120	
18	0.130		91	0.180		169	0.110	
19	0.050	(0.150)	92	0.150		170	0.190	
20	1.220		93	0.080		171	0.580	
21	1.510		94	0.150		172	0.090	
22	2.290		95	0.070		173	0.480	
23	0.270	(0.280)	98	0.040		174	0.170	
25	0.350		99	0.090		175	0.130	
26	0.440	(0.370)	100		(0.080)	176	0.260	
27	1.950	(0.090)	101	0.160		177	0.260	
28	3.600		102	0.080		178	0.190	
29	0.100		103	0.070		179	0.110	
30	3.210		104	0.030		180	0.090	(0.040)
31	1.060	(0.640)	105	0.090		181	0.220	
32	0.350		106	0.130		182	0.210	
33	0.160	(0.380)	107	0.060		183	0.320	
34		(0.280)	108	0.060		183	0.320	
35	0.340	(0.860)	109	0.050		184	0.650	
36	1.750		110	0.040		185	0.060	
37	0.300		111	0.070	(0.040)	186	0.530	
38	1.770		112	0.050		187	0.160	
39	1.050		113	0.080		188	0.080	
40		(0.550)	114	0.050		189	0.230	
41	0.210	(0.290)	115	0.060		191	0.220	
42	0.080		116	1.050		192	0.040	
43	4.200		117	0.060		193	0.190	
44	0.370		118	0.030		194	0.100	
45	1.070	(0.050)	119	0.100		195	0.420	
46	0.670		120	0.100		196	0.060	
47		(0.200)	121	0.300		197	0.350	
48	0.330		122	0.040		198	0.110	
49	0.450		123	0.050		199	0.190	
50	0.950		124	0.080		200	0.270	
51	0.400		125	0.470		201	0.100	
52	0.160	(0.120)	126	0.070		202	0.610	
53	0.910		127	0.030		203	0.230	
54	0.350		128	0.110		204	0.410	
55	1.950	(0.450)	129	0.200		205	0.090	
56	0.600		130	0.070		206	0.160	
57	2.000		131	0.110		207	0.530	
58	1.160		132	0.260		208	0.360	
59	0.450		133	0.510		209	0.130	
60	1.000		134	0.260		210	0.230	
61	0.450		135	0.260		211	0.600	
62	0.450		136	0.230		212	0.130	
63	0.400		137	0.070		213	0.100	
64	0.100		138	0.190		214	0.090	
65	0.100		139	0.330		215	0.130	
66	0.130		140	0.180		216	0.220	
67	0.050		141	0.240		217	0.120	
68	0.100		142	0.110		218	0.250	
69	0.090		143	0.220		219	0.170	
70	0.160		144	0.260	(0.070)	220	0.160	
71	0.300		145			221	0.350	
73	1.700		146	0.130		222	0.310	
74	0.160		147	0.400		223	0.210	
75	0.140		148	0.180		224	0.040	
76	0.070		150	0.250		225	0.040	
77	0.070		151	0.090		226	0.180	
78	0.070		152	0.160		227	0.060	
79	0.060		153	0.270				
80	0.420		154	0.150				
81	0.100		155	0.300				
82	0.150		156	0.430				
			157	0.040				

TOTAL 73.310 4.920
 * This portion of town highway is Class 3, but is functionally Class 4

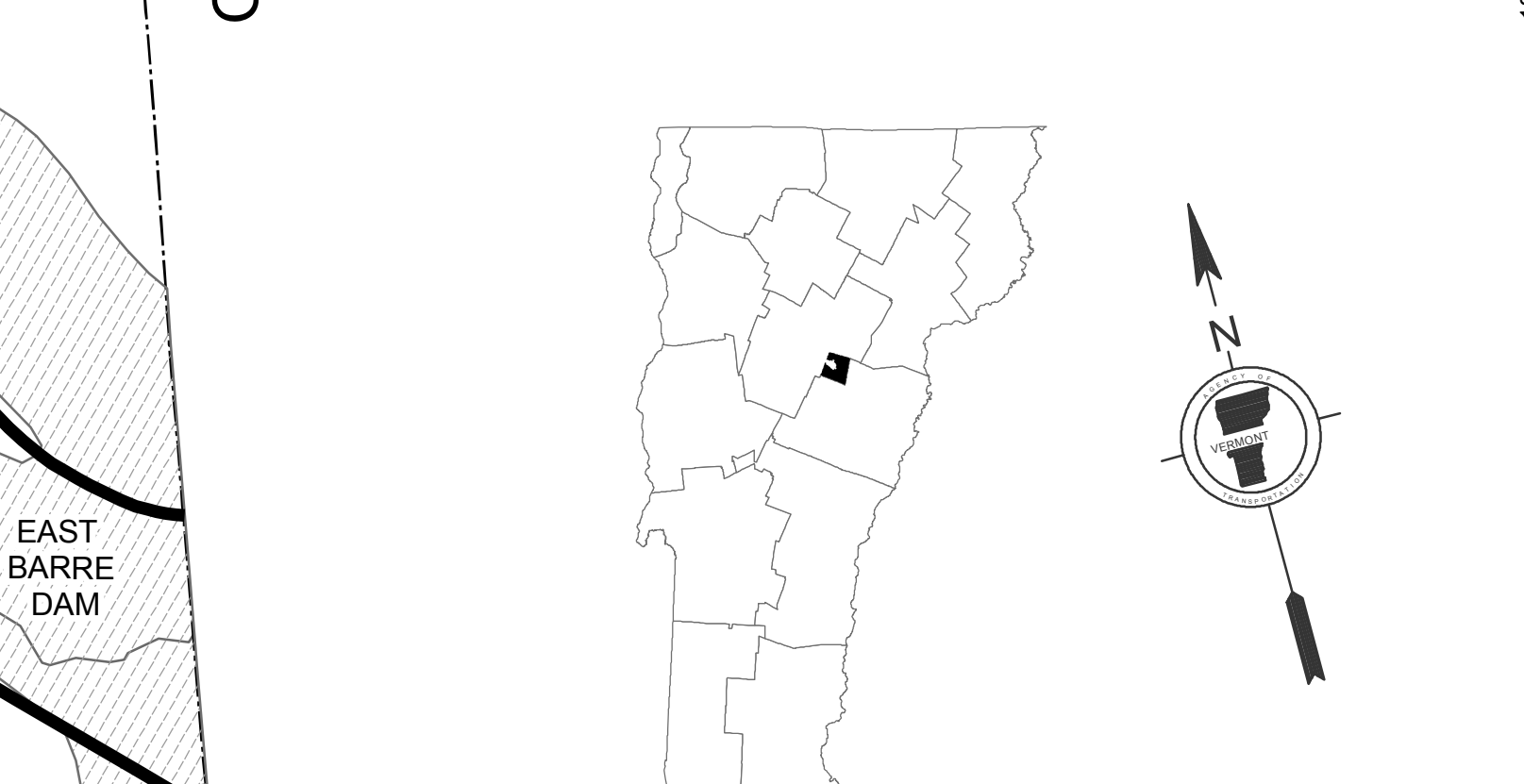
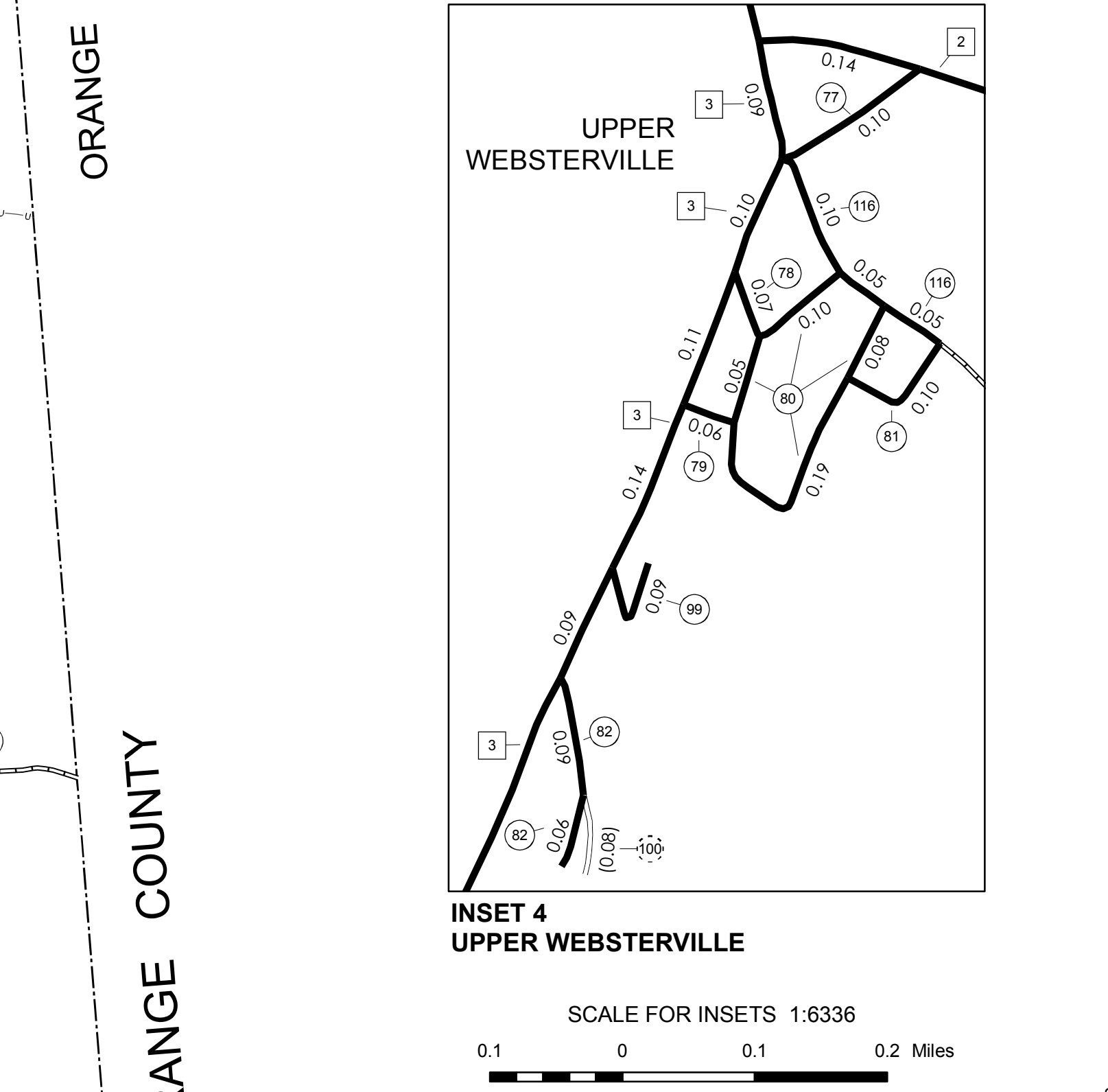
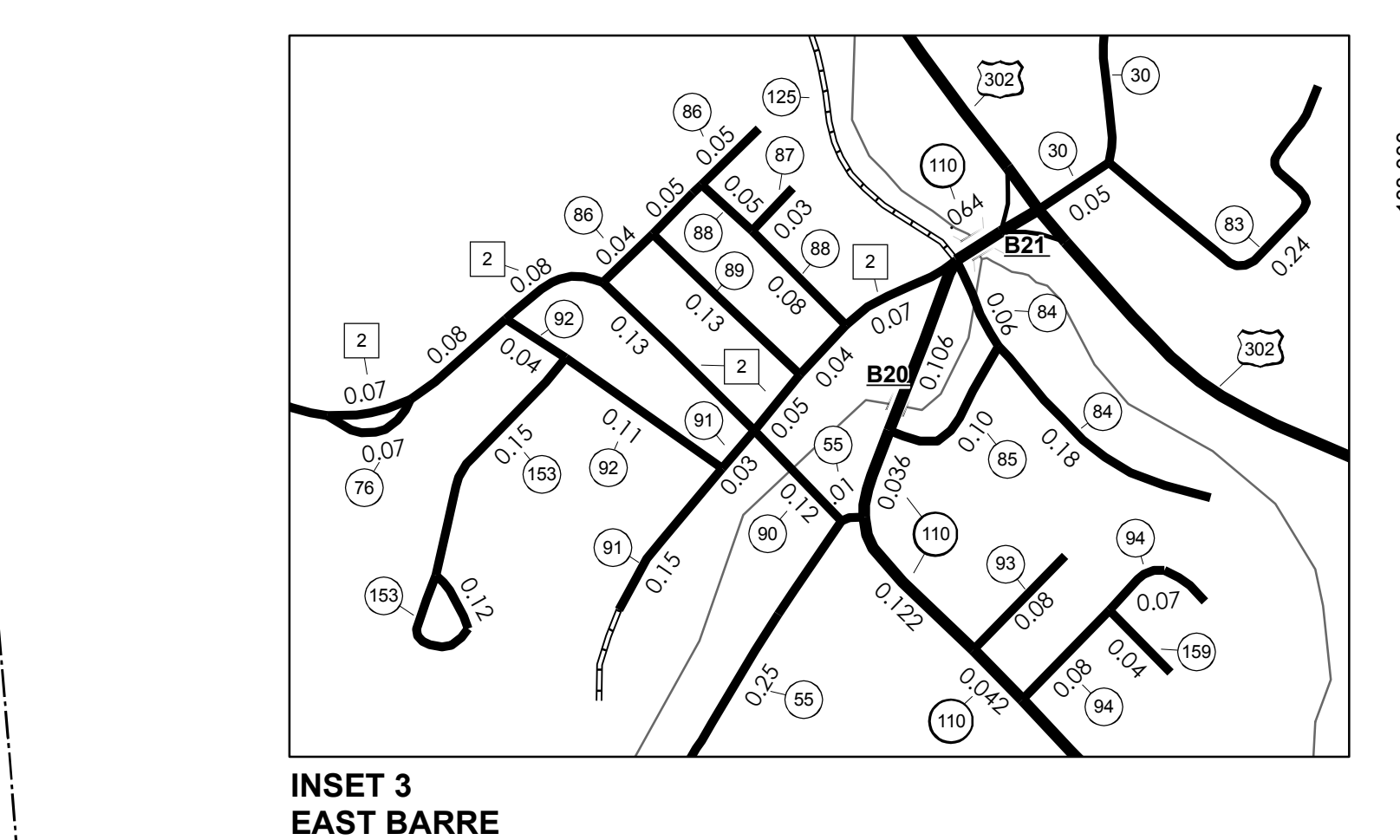
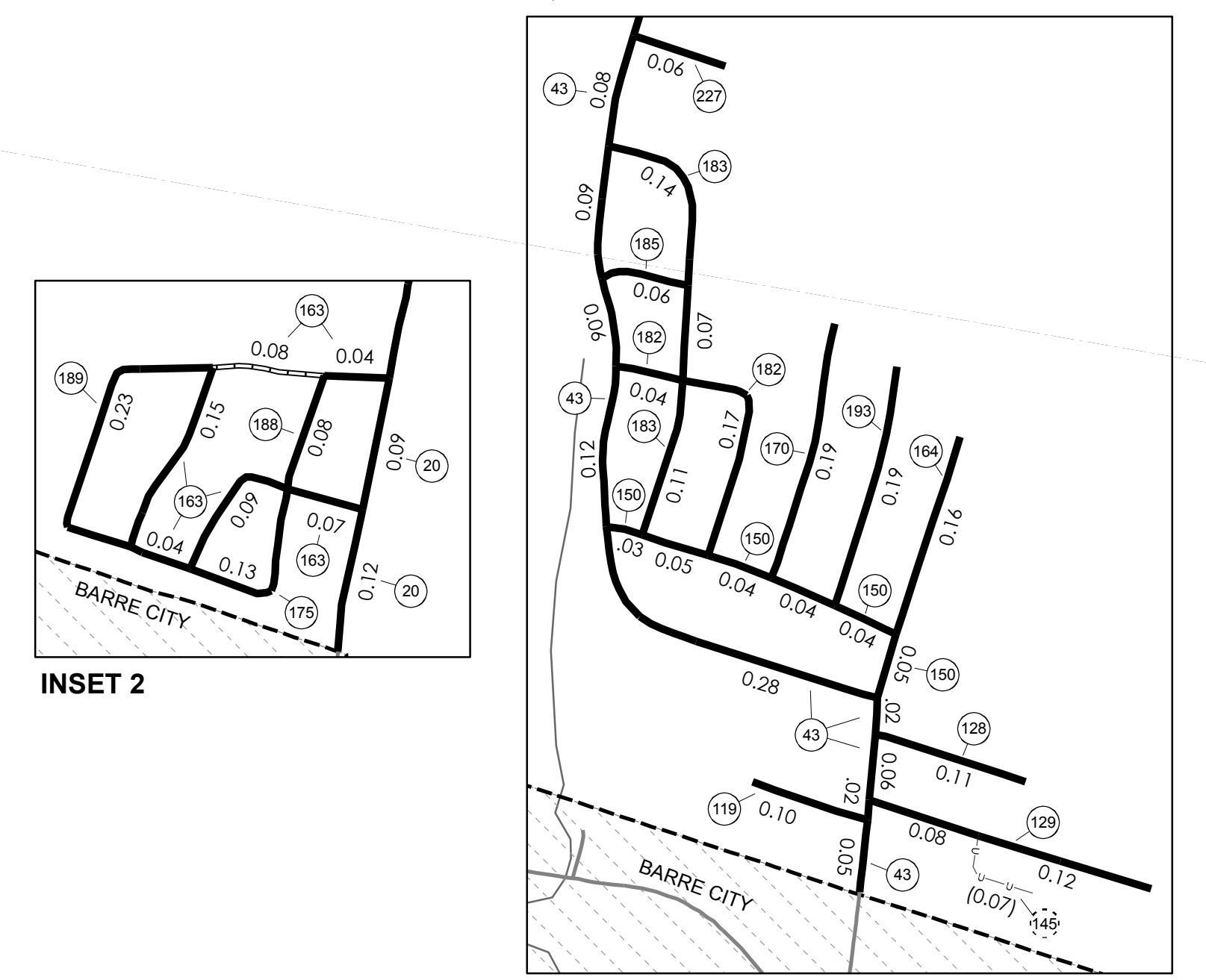
MILEAGE SUMMARY

CLASS	TH-1	TH-2	TH-3	TH-4	TH-5	TH-6	TH-7	TH-8	TH-9	TH-10	TH-12
CLASS 2	3.850	2.660	1.270	1.590	1.580	1.510	1.450	3.320	2.150	0.540	1.640
TOTAL CLASS 2	21.560										
CLASS 3	73.310										
TOTAL CLASS 3	73.310										
TOTAL TOWN	94.870										
STATE HIGHWAY	VT-14	4.033									
	VT-63	2.910									
	VT-110	1.124									
TOTAL STATE HIGHWAY	8.067										
US HIGHWAY	US-2	0.085									
	US-302	3.330									
TOTAL US HIGHWAY	3.415										
TOTAL STATE	11.482										

TOTAL, TRAVELED HIGHWAYS, FEB. 10, 2007: 106.352
 (Excludes Class 4 and Legal Trail Mileage)

- HIGHWAYS**
- INTERSTATE
 - U.S. ROUTE
 - STATE ROUTE
 - CLASS 1
 - CLASS 2
 - CLASS 3
 - CLASS 4
 - INTERSTATE OR DIVIDED HIGHWAY
 - STATE - HARD SURFACE OR PAVED
 - TOWN - HARD SURFACE OR PAVED
 - GRAVEL
 - SOIL OR GRADED AND DRAINED EARTH
 - UNIMPROVED OR PRIMITIVE
 - IMPASSABLE OR UNTRAVELED
 - LEGAL TRAIL
 - DISCONTINUED
 - HIGHWAY CLASS CHANGE
 - RAILROAD
- PUBLIC LAND**
- POLITICAL SUBDIVISIONS
 - STATE BOUNDARY
 - COUNTY BOUNDARY
 - TOWN BOUNDARY
 - VILLAGE BOUNDARY
 - URBAN COMPACT
 - OPEN WATER
 - SWAMP
 - STREAM OR BROOK
 - BRIDGE OR CULVERT
 - BRIDGE OR CULVERT GREATER THAN 20'
 - BRIDGE OR CULVERT 6' - 20'
- BRIDGE IDENTIFIERS**
- B34 STATE BRIDGE IDENTIFIER
 - B34 TOWN BRIDGE IDENTIFIER
- FEDERAL CLASSIFICATION IDENTIFIER**
- FAU URBAN ARTERIAL OR COLLECTOR
 - MA MINOR ARTERIAL
 - MJC MAJOR COLLECTOR
 - MNC MINOR COLLECTOR
 - PA PRINCIPAL ARTERIAL

DISCLAIMER:
 The untraveled highways (laid-out town highways), discontinued highways, and legal trails shown hereon are those of which the Agency of Transportation has record; others may exist.
 Highway and bridge data by the Agency of Transportation, Policy & Planning Division. All other data from the Vermont Center for Geographic Information.



VERMONT GENERAL HIGHWAY MAP
Town of Barre
 WASHINGTON COUNTY
 Transportation District #6

Prepared by the Vermont Agency of Transportation Policy & Planning Division in cooperation with U.S. Department of Transportation Federal Highway Administration

Mileage as of: Feb. 10, 2007
 Map generated: October, 2007

SCALE: 1:12672

0.2 0 0.2 0.4 0.6 Miles
 1 0 1 Kilometers