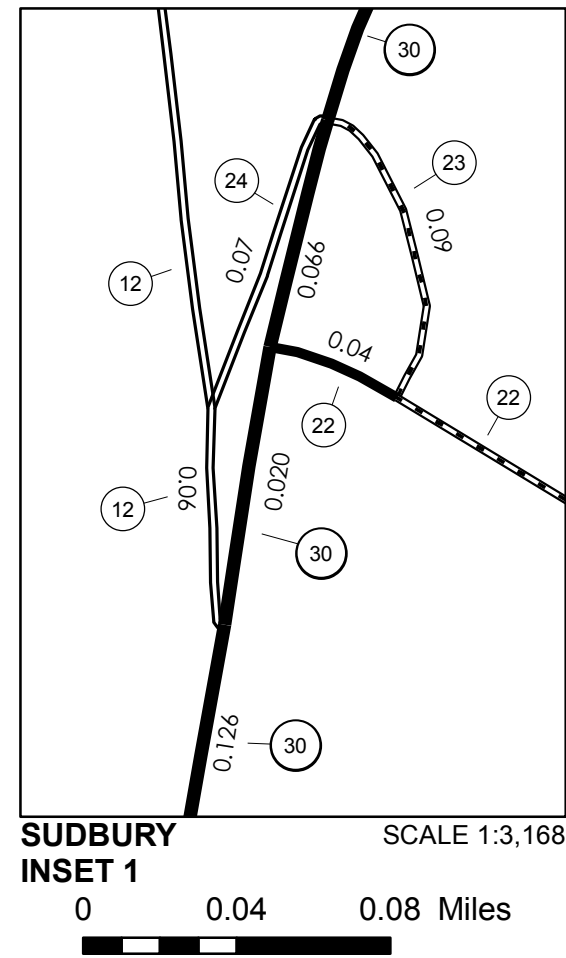


TOWN HWY. No.	LENGTH IN MILES CLASS 3	CLASS 4
5	2.65	
6	0.90	
7	0.75	
8	1.36	
9	0.08	(0.07)
10	0.55	
11	0.38	
12	0.70	
13	1.80	(1.05)
14		(0.60)
15	0.25	
17	0.19	(0.88)
18	0.65	
19	0.75	
20	0.46	
21	0.37	
22	2.30	
23	0.09	
24	0.07	
TOTAL	14.20	2.60

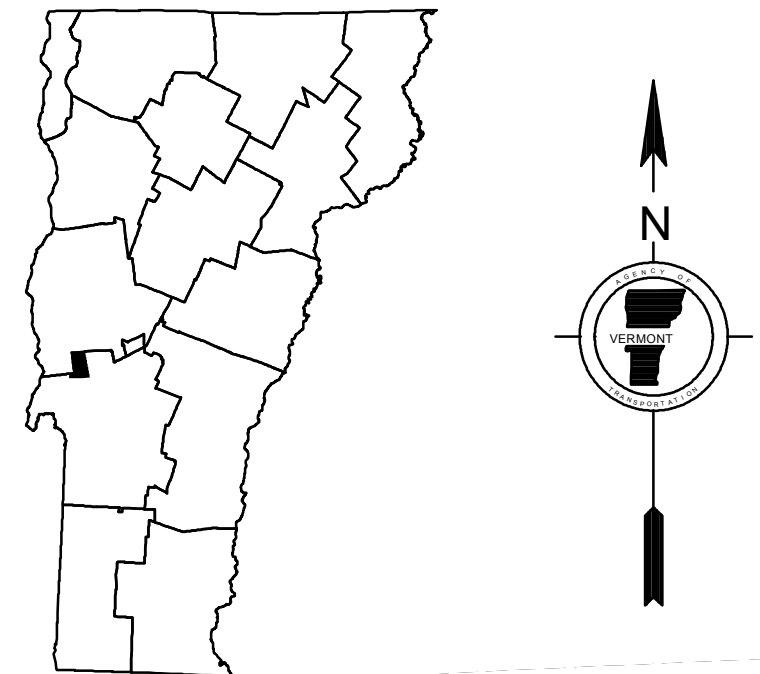
MILEAGE SUMMARY

CLASS	LENGTH	TOTAL
CLASS 2		
TH-1	4.280	
TH-2	1.750	
TH-3	0.400	
TH-4	1.300	
TOTAL CLASS 2		7.730
CLASS 3		
TOTAL CLASS 3		14.20
TOTAL TOWN		21.930
STATE HIGHWAY		
VT-30	6.393	
VT-73	3.194	
TOTAL STATE HIGHWAY		9.587
TOTAL STATE		9.587

TOTAL, TRAVELED HIGHWAYS, FEB. 10, 2015: 31.517
 (Excludes Class 4, Legal Trail, and Unidentified Corridor Mileage)



SUDBURY INSET 1 SCALE 1:3,168
 0 0.04 0.08 Miles



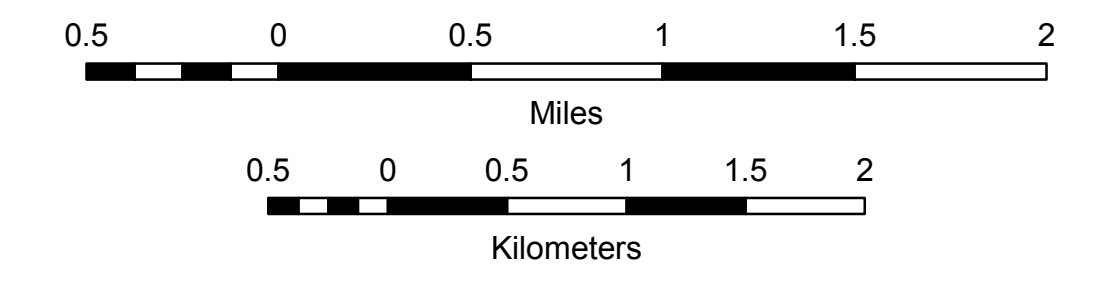
VERMONT
GENERAL HIGHWAY MAP
Town of Sudbury

RUTLAND COUNTY
 Transportation District #3

Prepared by the
Vermont Agency of Transportation
 Division of Policy, Planning and Intermodal Development
 in cooperation with
U.S. Department of Transportation
 Federal Highway Administration

Mileage as of February 10, 2015
 Map prepared June 09, 2015

SCALE 1:31,680



- HIGHWAYS**
- INTERSTATE
 - U.S. ROUTE
 - STATE ROUTE
 - CLASS 1
 - CLASS 2
 - CLASS 3
 - CLASS 4
 - LEGAL TRAIL
 - INTERSTATE OR DIVIDED HIGHWAY
 - STATE - HARD SURFACE OR PAVED
 - TOWN - HARD SURFACE OR PAVED
 - GRAVEL
 - SOIL OR GRADED AND DRAINED EARTH
 - UNIMPROVED OR PRIMITIVE
 - IMPASSABLE OR UNTRAVELED
 - LEGAL TRAIL
 - DISCONTINUED
 - HIGHWAY CLASS CHANGE
 - RAILROAD
 - INACTIVE RAILROAD
 - NATIONAL FOREST ROAD
 - STATE FOREST HIGHWAY
 - PARK AND RIDE
- POLITICAL SUBDIVISIONS**
- STATE BOUNDARY
 - COUNTY BOUNDARY
 - TOWN BOUNDARY
 - VILLAGE BOUNDARY
 - URBAN COMPACT BOUNDARY
 - WATER BODY
 - STREAM OR BROOK
- BRIDGE OR CULVERT**
- BRIDGE OR CULVERT > 20'
 - BRIDGE OR CULVERT 6' - 20'
 - VOBCIT BRIDGE
 - VOBCIT CULVERT > 6'
 - STATE BRIDGE OR CULVERT IDENTIFIER
 - TOWN BRIDGE OR CULVERT IDENTIFIER
- FEDERAL CLASSIFICATION IDENTIFIER**
- FAU URBAN ARTERIAL OR COLLECTOR
 - MA MINOR ARTERIAL
 - MJC MAJOR COLLECTOR
 - MNC MINOR COLLECTOR
 - PA PRINCIPAL ARTERIAL
- PUBLIC LAND - GREEN MOUNTAIN NATIONAL FOREST**
- PUBLIC LAND - STATE/MUNICIPAL**

DISCLAIMER:
 The untraveled highways (laid-out town highways), discontinued highways, and legal trails herein are those of which the Agency of Transportation has record; others may exist.

Highway and bridge data by the Agency of Transportation. Town short structures are drawn from the Vermont Online Bridge & Culvert Inventory Tool (VOBCIT) database. All other data from the Vermont Center for Geographic Information. Only named streams are shown.

Vermont State Plane Coordinate System
 North American Datum of 1983
 SPCS_Zone_Identifier: 4400
 Geodetic Reference System 80
 4,000-meter grid, Easting - Northing