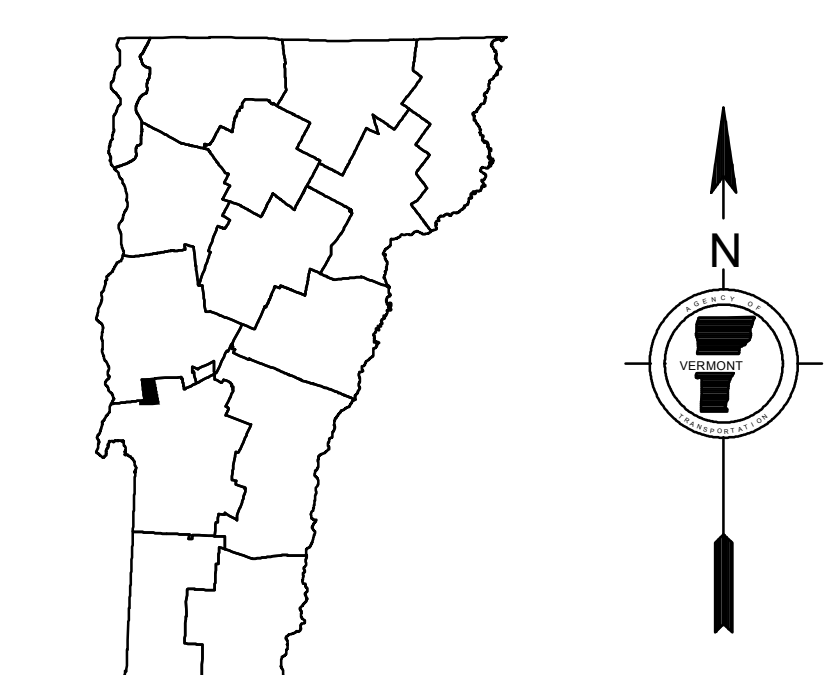
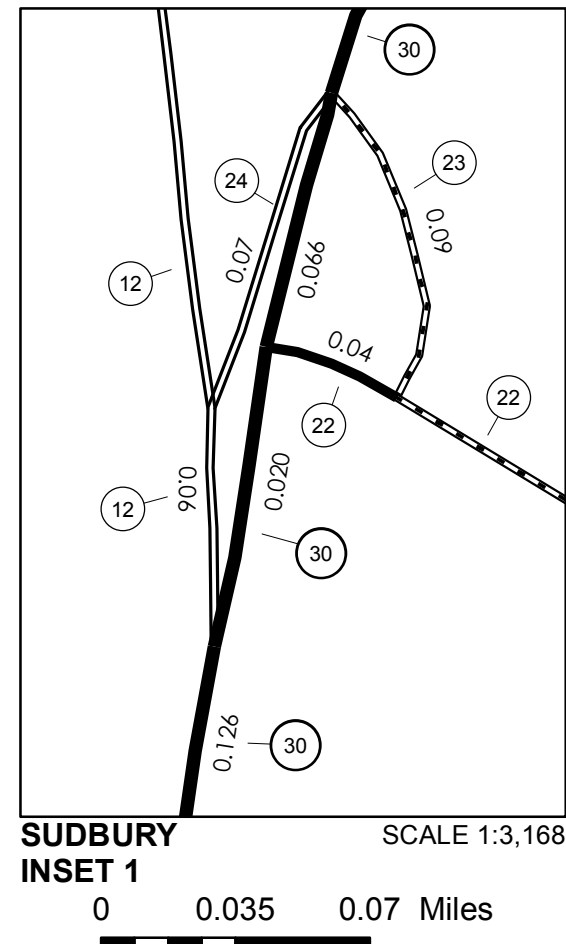


TOWN HWY. No.	LENGTH IN MILES CLASS 3	CLASS 4
5	2.65	
6	0.80	
7	0.75	
8	1.36	
9	0.08	(0.07)
10	0.55	
11	0.38	
12	0.70	
13	1.80	(1.05)
14		(0.60)
15	0.25	
17	0.19	(0.88)
18	0.65	
19	0.75	
20	0.46	
21	0.37	
22	2.30	
23	0.09	
24	0.07	
TOTAL	14.20	2.60

MILEAGE SUMMARY

CLASS	LENGTH	TOTAL
CLASS 2		
TH-1	4.280	
TH-2	1.750	
TH-3	0.400	
TH-4	1.300	
TOTAL CLASS 2		7.730
CLASS 3		
TOTAL CLASS 3		14.20
TOTAL TOWN		21.930
STATE HIGHWAY		
VT-30	6.393	
VT-73	3.194	
TOTAL STATE HIGHWAY		9.587
TOTAL STATE		9.587

TOTAL, TRAVELED HIGHWAYS, FEB. 10, 2013: 31.517
 (Excludes Class 4, Legal Trail, and Unidentified Corridor Mileage)



VERMONT GENERAL HIGHWAY MAP Town of Sudbury

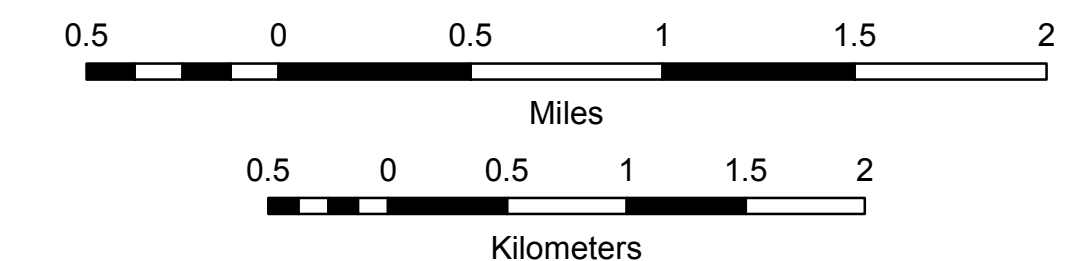
RUTLAND COUNTY

Transportation District #3

Prepared by the
Vermont Agency of Transportation
Division of Policy, Planning and Intermodal Development
in cooperation with
U.S. Department of Transportation
Federal Highway Administration

Mileage as of February 10, 2013
Map prepared October 15, 2013

SCALE 1:31,680



- HIGHWAYS**
- INTERSTATE
- U.S. ROUTE
- STATE ROUTE
- CLASS 1
- CLASS 2
- CLASS 3
- CLASS 4
- LEGAL TRAIL
- INTERSTATE OR DIVIDED HIGHWAY
- STATE - HARD SURFACE OR PAVED
- TOWN - HARD SURFACE OR PAVED
- GRAVEL
- SOIL OR GRADED AND DRAINED EARTH
- UNIMPROVED OR PRIMITIVE
- IMPASSABLE OR UNTRAVELED
- LEGAL TRAIL
- DISCONTINUED
- HIGHWAY CLASS CHANGE
- RAILROAD
- INACTIVE RAILROAD
- NATIONAL FOREST ROAD
- STATE FOREST HIGHWAY
- PARK AND RIDE
- PUBLIC LAND - GREEN MOUNTAIN NATIONAL FOREST
- PUBLIC LAND - STATE/MUNICIPAL
- POLITICAL SUBDIVISIONS**
- STATE BOUNDARY
- COUNTY BOUNDARY
- TOWN BOUNDARY
- VILLAGE BOUNDARY
- URBAN COMPACT BOUNDARY
- WATER BODY
- STREAM OR BROOK
- BRIDGE OR CULVERT**
- BRIDGE OR CULVERT GREATER THAN 20'
- BRIDGE OR CULVERT 6' - 20'
- STATE BRIDGE OR CULVERT IDENTIFIER
- TOWN BRIDGE OR CULVERT IDENTIFIER

DISCLAIMER:
The untraveled highways (laid-out town highways), discontinued highways, and legal trails hereon are those of which the Agency of Transportation has record; others may exist.
Highway and bridge data by the Agency of Transportation. All other data from the Vermont Center for Geographic Information. Only named streams are shown.

Vermont State Plane Coordinate System
North American Datum of 1983
SPCS_Zone_Identifier: 4400
Geodetic Reference System 80
4,000-meter grid, Easting - Northing