

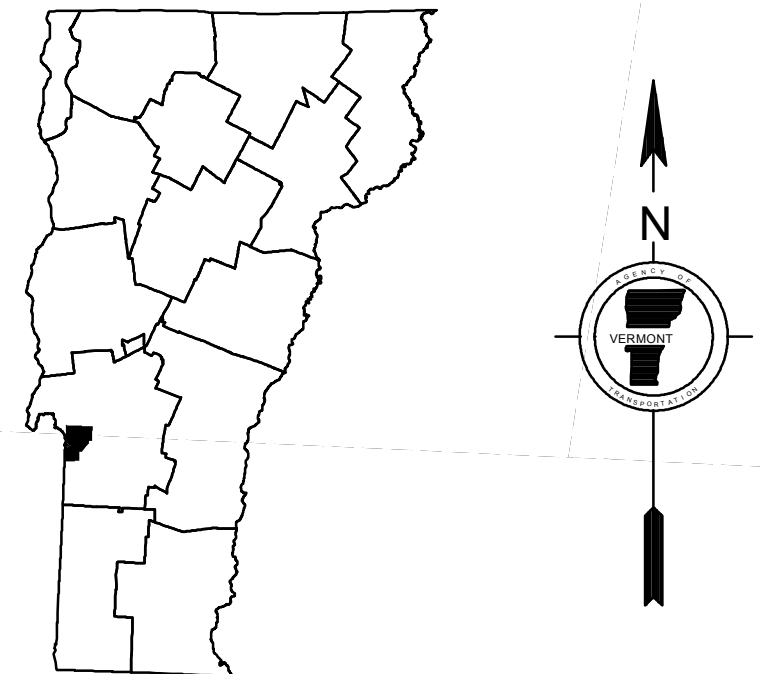
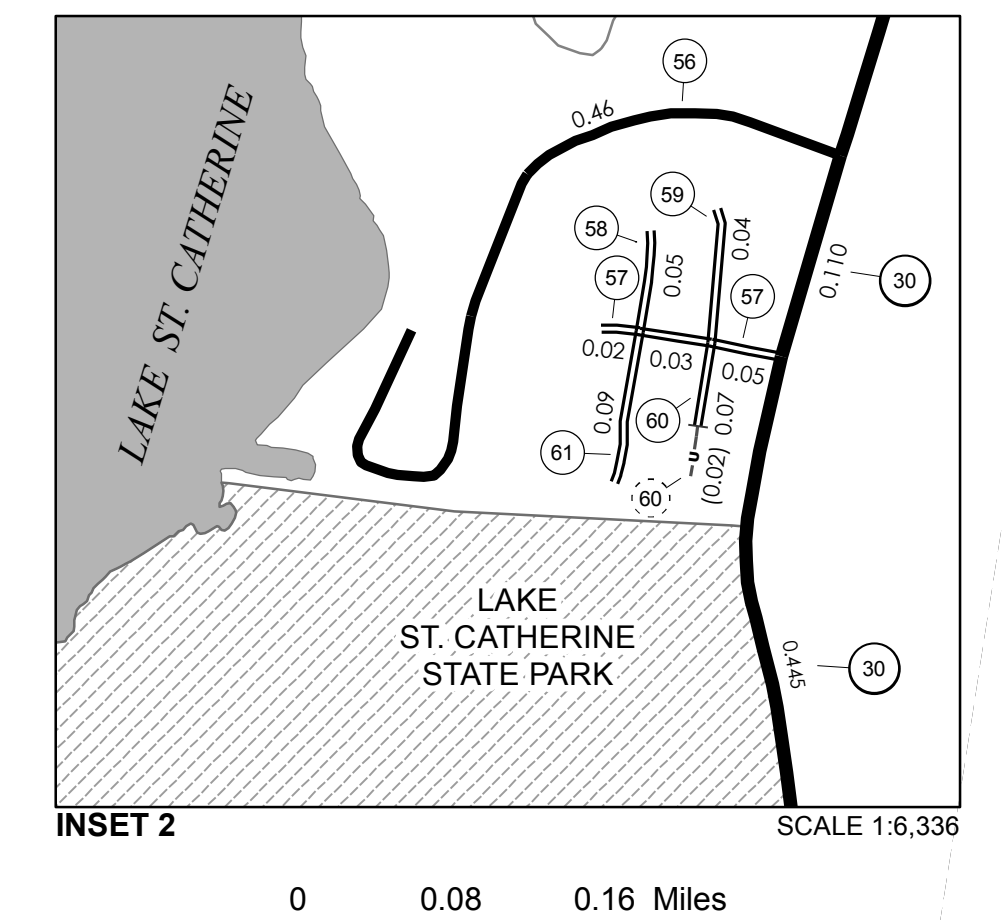
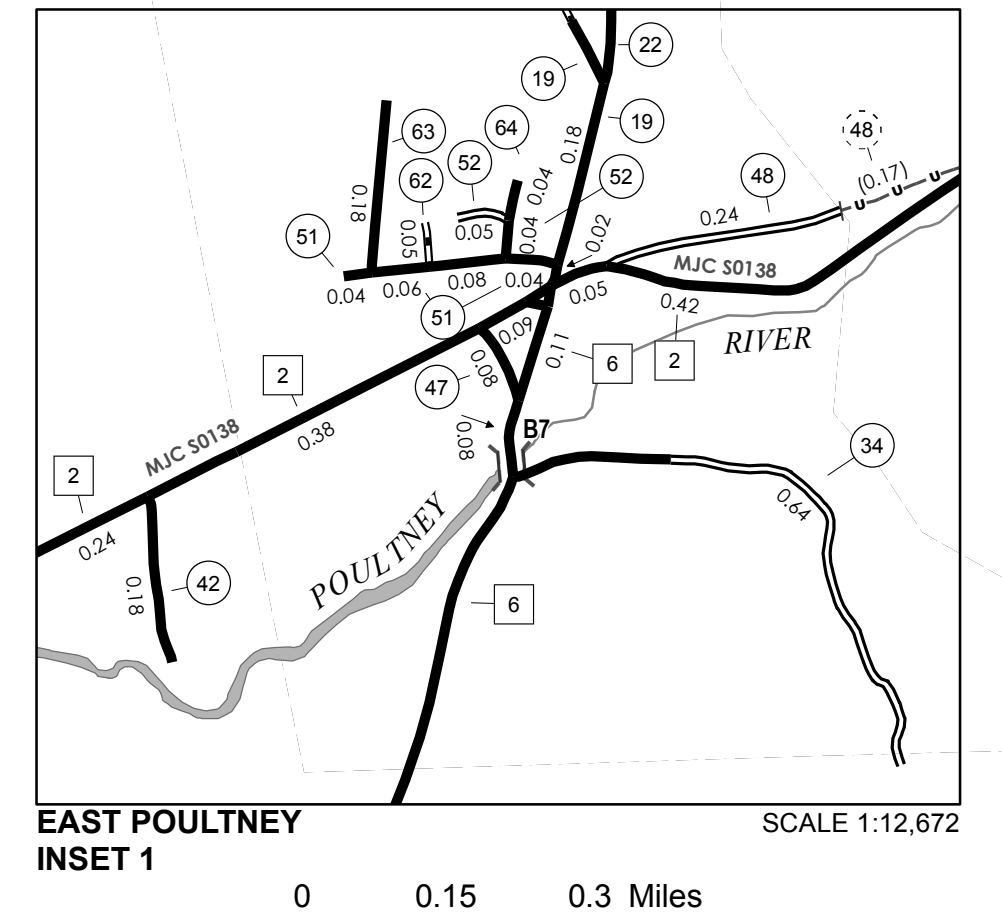
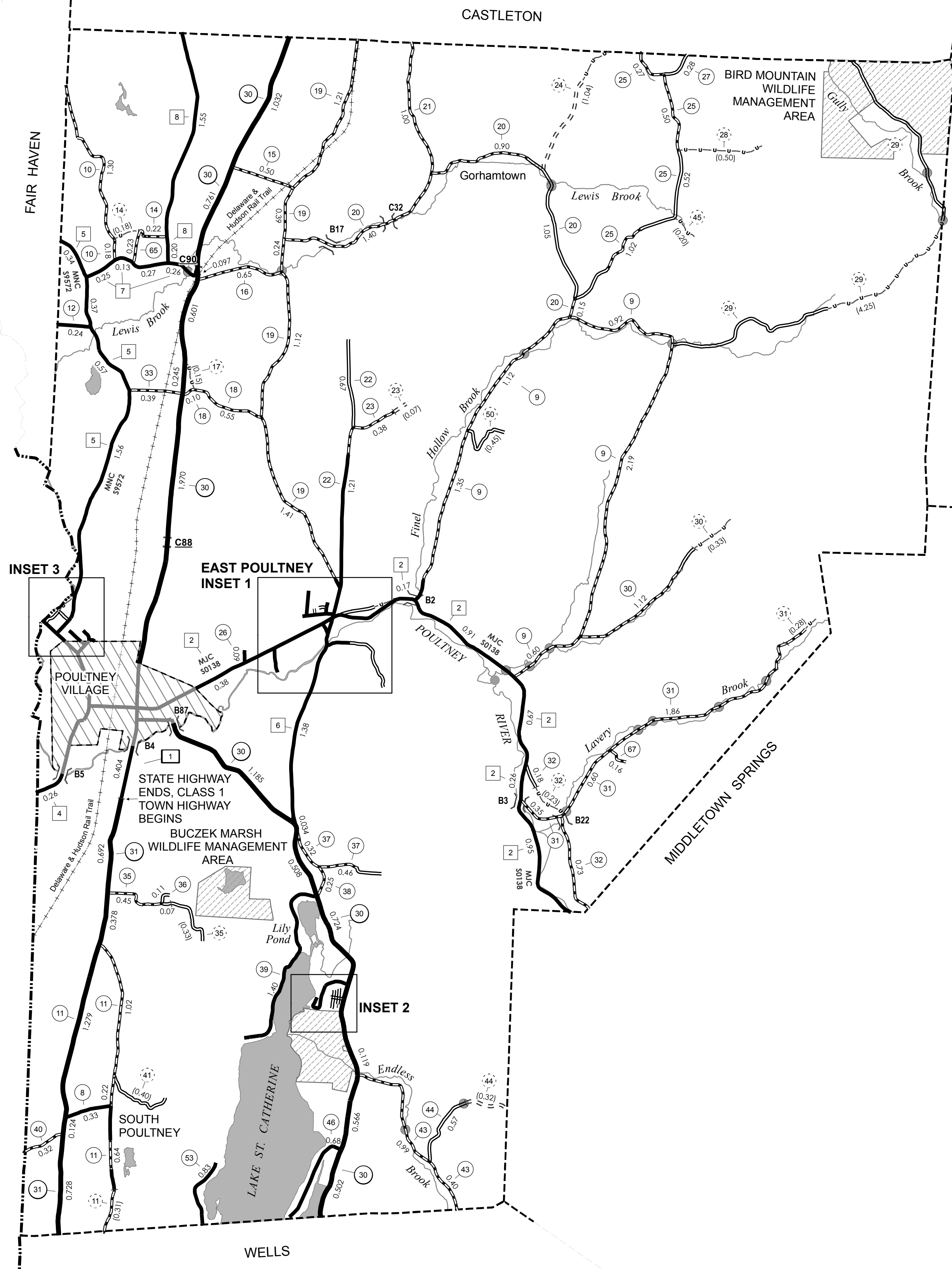
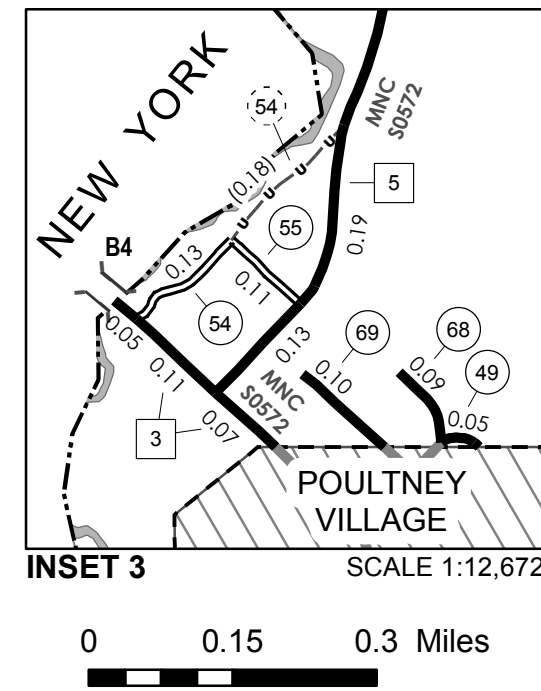
TOWN HWY. No.	LENGTH IN MILES CLASS 3	LENGTH IN MILES CLASS 4	TOWN HWY. No.	LENGTH IN MILES CLASS 3	LENGTH IN MILES CLASS 4
8	0.33		39	1.40	
9	6.18		40	0.32	
10	1.48		41		(0.40)
11	1.88		42	0.18	
12	0.24		43	1.39	
14	0.22	(0.06)	44	0.57	
15	0.50		45		(0.20)
16	0.65		46	0.68	
17		(0.15)	47	0.08	
18	0.65		48	0.24	(0.17)
19	4.57		49	0.05	
20	3.50		50		(0.45)
21	1.00		51	0.22	
22	1.88		52	0.09	
23	0.38	(0.07)	53	0.83	
24		(1.04)	54	0.13	
25	2.31		55	0.11	
26	0.09		56	0.46	
27	0.28		57	0.10	
28		(0.50)	58	0.05	
29	1.12	(0.33)	59	0.04	
30	2.81		60	0.07	(0.02)
31	0.91	(0.23)	61	0.09	
32	0.39		62	0.05	
33	0.64		63	0.18	
34	0.52	(0.33)	64	0.04	
35	0.11		65	0.23	
36	0.78		67	0.16	
37	0.25		68	0.09	
38			69	0.10	
TOTAL			41.62	5.71	

TOWN HWY. No.	LENGTH IN MILES "NOT UP TO STANDARD"
11	(0.31)
14	(0.12)
29	(2.49)
31	(0.28)
44	(0.32)
54	(0.18)
TOTAL	3.70

* The sections of the town highways listed above are legally Class 3, but have been deemed "Not Up To Standard" and are functionally Class 4 Town Highways

MILEAGE SUMMARY		
CLASS 1		
TH-1	0.404	
TOTAL CLASS 1	0.404	
CLASS 2		
TH-2	4.520	
TH-3	0.230	
TH-4	0.260	
TH-5	3.160	
TH-6	1.570	
TH-7	0.910	
TH-8	1.750	
TOTAL CLASS 2	12.400	
CLASS 3		
TOTAL CLASS 3	41.62	
TOTAL TOWN	54.424	
STATE HIGHWAY		
VT-30	8.899	
VT-31	3.201	
TOTAL STATE HIGHWAY	12.100	
TOTAL STATE	12.100	

TOTAL, TRAVELED HIGHWAYS, FEB. 10, 2015: 66.524
(Excludes Class 4, Legal Trail, and Unidentified Corridor Mileage)



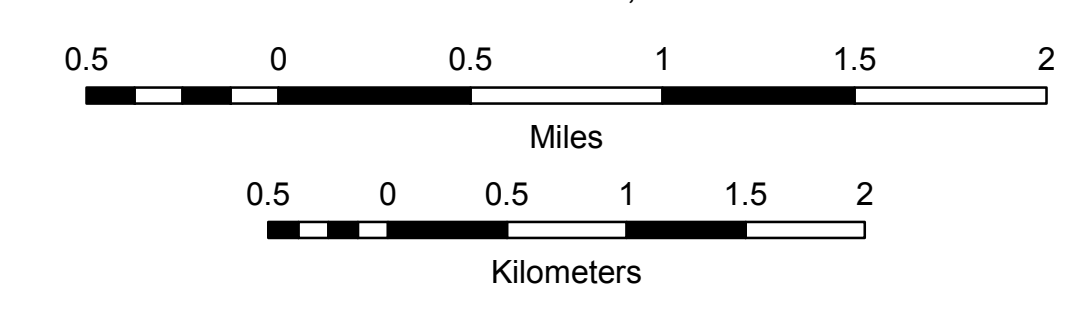
VERMONT GENERAL HIGHWAY MAP

Town of Poultney

RUTLAND COUNTY
Transportation District #3

Prepared by the
Vermont Agency of Transportation
Division of Policy, Planning and Intermodal Development
in cooperation with
U.S. Department of Transportation
Federal Highway Administration

Mileage as of February 10, 2015
Map prepared June 09, 2015
SCALE 1:31,680



- HIGHWAYS**
 - INTERSTATE OR DIVIDED HIGHWAY
 - STATE - HARD SURFACE OR PAVED
 - TOWN - HARD SURFACE OR PAVED
 - GRAVEL
 - SOIL OR GRADED AND DRAINED EARTH
 - UNIMPROVED OR PRIMITIVE
 - IMPASSABLE OR UNTRAVELED
 - LEGAL TRAIL
 - DISCONTINUED
 - HIGHWAY CLASS CHANGE
 - RAILROAD
 - INACTIVE RAILROAD
 - NFR NATIONAL FOREST ROAD
 - SFH STATE FOREST HIGHWAY
 - P PARK AND RIDE
- PUBLIC LAND - GREEN MOUNTAIN NATIONAL FOREST**
- PUBLIC LAND - STATE/MUNICIPAL**
- POLITICAL SUBDIVISIONS**
 - STATE BOUNDARY
 - COUNTY BOUNDARY
 - TOWN BOUNDARY
 - VILLAGE BOUNDARY
 - URBAN COMPACT BOUNDARY
 - WATER BODY
 - STREAM OR BROOK
- BRIDGE OR CULVERT**
 - BRIDGE OR CULVERT > 20'
 - BRIDGE OR CULVERT 6' - 20'
 - VOBCIT BRIDGE
 - VOBCIT CULVERT > 6'
- BRIDGE OR CULVERT IDENTIFIER**
 - B34 / C34 STATE BRIDGE OR CULVERT IDENTIFIER
 - B34 / C34 TOWN BRIDGE OR CULVERT IDENTIFIER
- FEDERAL CLASSIFICATION IDENTIFIER**
 - FAU URBAN ARTERIAL OR COLLECTOR
 - MA MINOR ARTERIAL
 - MJC MAJOR COLLECTOR
 - MNC MINOR COLLECTOR
 - PA PRINCIPAL ARTERIAL

DISCLAIMER:
The untraveled highways (laid-out town highways), discontinued highways, and legal trails hereon are those of which the Agency of Transportation has record; others may exist.

Highway and bridge data by the Agency of Transportation. Town short structures are drawn from the Vermont Online Bridge & Culvert Inventory Tool (VOBCIT) database. All other data from the Vermont Center for Geographic Information. Only named streams are shown.

Vermont State Plane Coordinate System
North American Datum of 1983
SPCS_Zone_Identifier: 4400
Geodetic Reference System 80
4,000-meter grid, Easting - Northing