

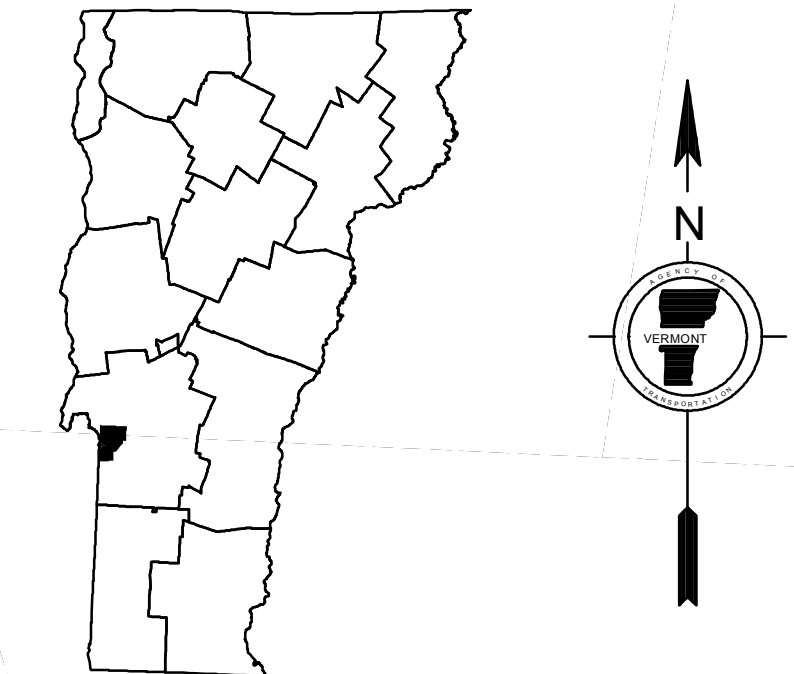
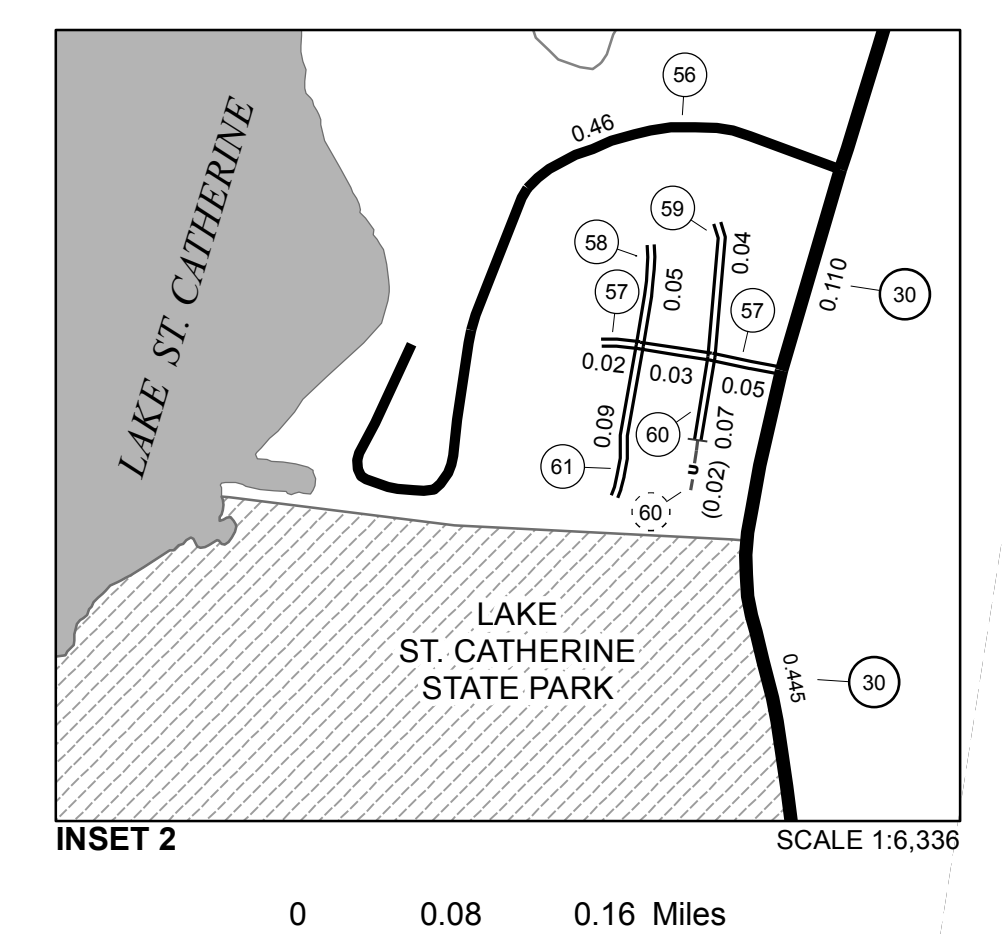
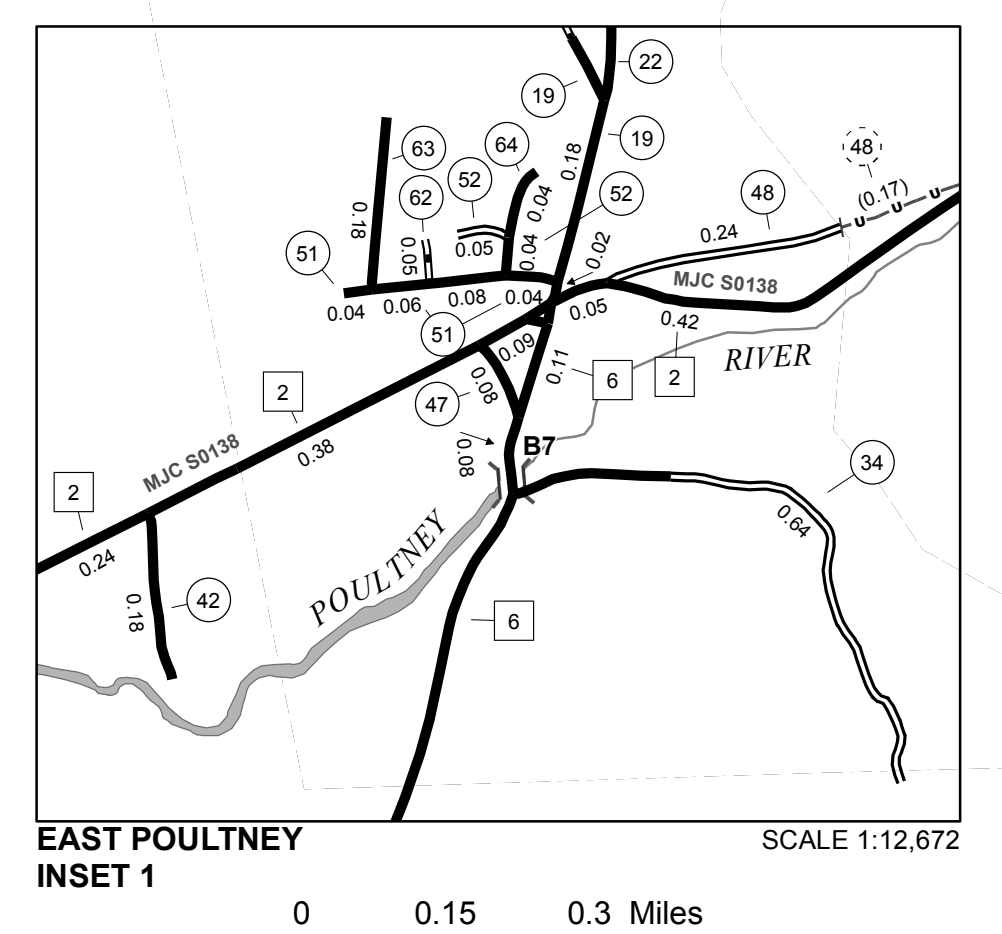
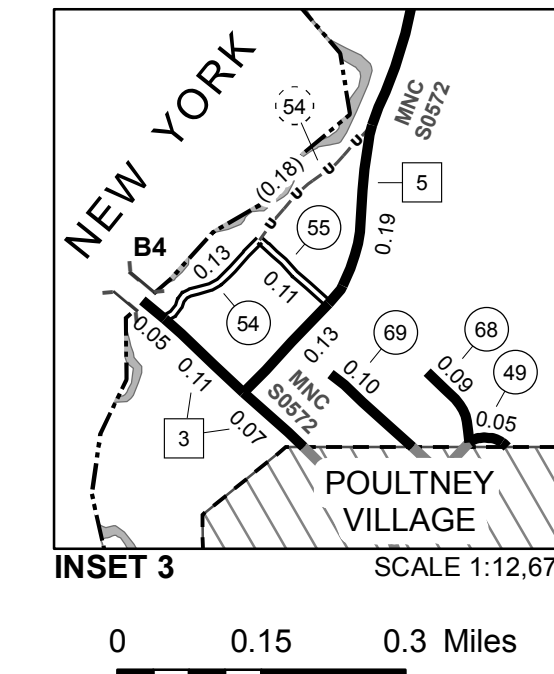
TOWN HWY. No.	LENGTH IN MILES CLASS 3	LENGTH IN MILES CLASS 4	TOWN HWY. No.	LENGTH IN MILES CLASS 3	LENGTH IN MILES CLASS 4
8	0.33		39	1.40	
9	6.18		40	0.32	
10	1.48		41		(0.40)
11	1.88		42	0.18	
12	0.24		43	1.39	
14	0.22	(0.06)	44	0.57	
15	0.50		45		(0.20)
16	0.65		46	0.68	
17		(0.15)	47	0.08	
18	0.65		48	0.24	(0.17)
19	4.57		49	0.05	
20	3.50		50		(0.45)
21	1.00		51	0.22	
22	1.88		52	0.09	
23	0.38	(0.07)	53	0.83	
24		(1.04)	54	0.13	
25	2.31		55	0.11	
26	0.09		56	0.46	
27	0.28		57	0.10	
28		(0.50)	58	0.05	
29	1.12	(0.33)	59	0.04	
30	2.81		60	0.07	(0.02)
31	0.91	(0.23)	61	0.09	
32	0.39		62	0.05	
33	0.64		63	0.18	
34	0.52	(0.33)	64	0.04	
35	0.11		65	0.23	
36	0.78		67	0.16	
37	0.25		68	0.09	
38			69	0.10	
<b>TOTAL</b>			<b>41.62</b>	<b>5.71</b>	

TOWN HWY. No.	LENGTH IN MILES "NOT UP TO STANDARD"
11	(0.31)
14	(0.12)
29	(2.49)
31	(0.28)
44	(0.32)
54	(0.18)
<b>TOTAL</b>	<b>3.70</b>

\* The sections of the town highways listed above are legally Class 3, but have been deemed "Not Up To Standard" and are functionally Class 4 Town Highways

MILEAGE SUMMARY		
CLASS 1		
TH-1	0.404	
TOTAL CLASS 1		0.404
CLASS 2		
TH-2	4.520	
TH-3	0.230	
TH-4	0.260	
TH-5	3.160	
TH-6	1.570	
TH-7	0.910	
TH-8	1.750	
TOTAL CLASS 2		12.400
CLASS 3		
TOTAL CLASS 3		41.62
TOTAL TOWN		54.424
STATE HIGHWAY		
VT-30	8.899	
VT-31	3.201	
TOTAL STATE HIGHWAY		12.100
TOTAL STATE		12.100

**TOTAL, TRAVELED HIGHWAYS, FEB. 10, 2014: 66.524**  
(Excludes Class 4, Legal Trail, and Unidentified Corridor Mileage)



**VERMONT**  
**GENERAL HIGHWAY MAP**  
**Town of Poultney**  
 RUTLAND COUNTY  
 Transportation District #3  
 Prepared by the  
 Vermont Agency of Transportation  
 Division of Policy, Planning and Intermodal Development  
 in cooperation with  
 U.S. Department of Transportation  
 Federal Highway Administration  
 Mileage as of February 10, 2014  
 Map prepared October 06, 2014  
 SCALE 1:31,680  
 0.5 0 0.5 1 1.5 2  
 Miles  
 0.5 0 0.5 1 1.5 2  
 Kilometers

**DISCLAIMER:**  
The untraveled highways (laid-out town highways), discontinued highways, and legal trails herein are those of which the Agency of Transportation has record; others may exist.

Highway and bridge data by the Agency of Transportation. Town short structures are drawn from the Vermont Online Bridge & Culvert Inventory Tool (VOBCIT) database. All other data from the Vermont Center for Geographic Information. Only named streams are shown.

Vermont State Plane Coordinate System  
North American Datum of 1983  
SPCS\_Zone\_Identifier: 4400  
Geodetic Reference System 80  
4,000-meter grid, Easting - Northing