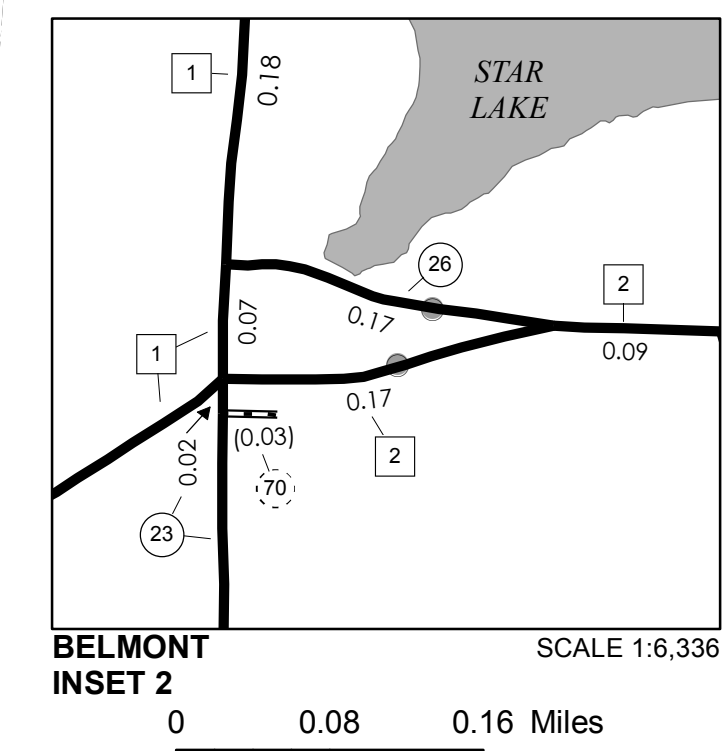
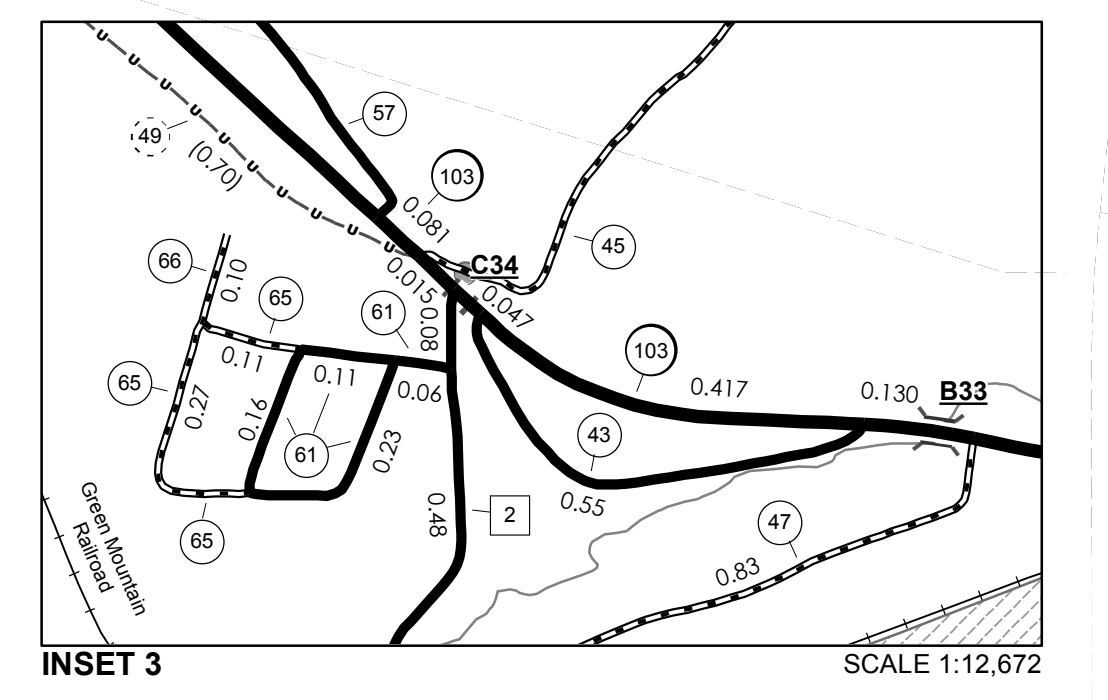
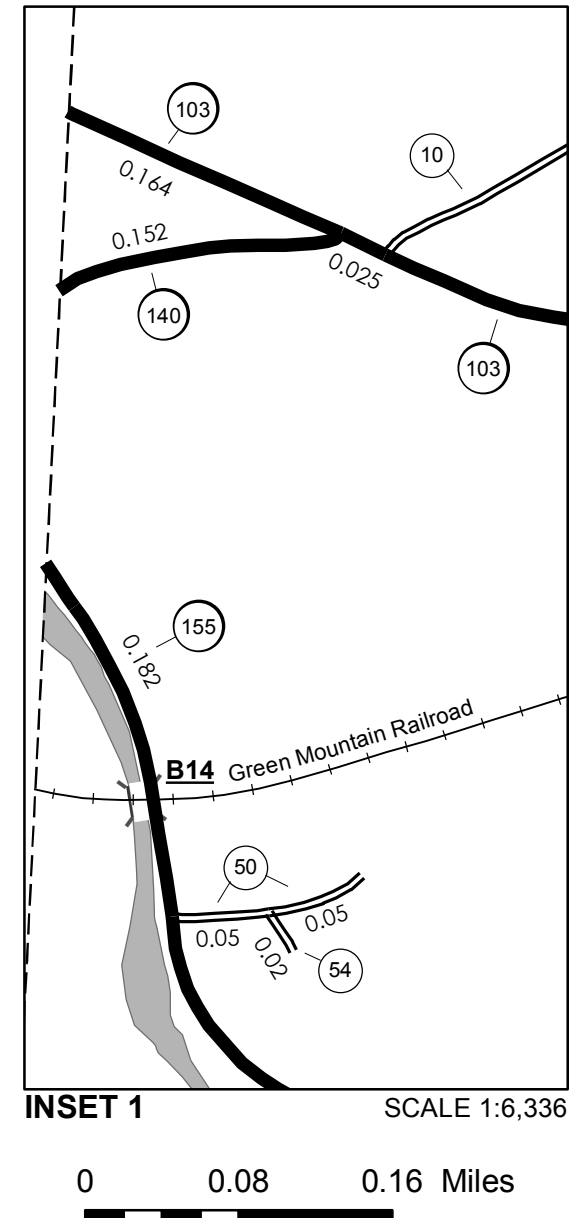


TOWN HWY. No.	LENGTH IN MILES CLASS 3	LENGTH IN MILES CLASS 4	TOWN HWY. No.	LENGTH IN MILES CLASS 3	LENGTH IN MILES CLASS 4	TOWN HWY. No.	LENGTH IN MILES CLASS 3	LENGTH IN MILES CLASS 4
4	3.62		27	1.79		50	0.10	
5	2.23		28	0.20		52	0.04	
6	1.51		29	0.34	(0.26)	53	0.02	
7	0.04		30	1.74		54	0.02	
8	0.70		31	0.16	(0.09)	55	0.17	
9	0.17		32	0.16	(1.54)	56	0.17	
10	1.67	(1.00)	33	0.17		57	0.83	
11	0.70	(1.22)	34	1.11		58	0.22	
12	1.27		35	0.32		59		(0.35)
13	0.53		36	0.25	(1.57)	60	0.20	
14	0.40	(0.50)	37	1.52	(0.33)	61	0.56	
15	0.81	(0.50)	38	0.21		62	0.31	
16	0.70		39		(0.60)	63	0.04	
17	2.35	(0.81)	40	1.39	(0.16)	64	0.15	
18	1.05		41	0.07		65	0.38	
19	0.75	(0.45)	42	1.86		66	0.10	
20	1.30	(0.42)	43	0.55		67	0.11	
21	0.49		44	1.93		68	0.60	
22	1.00		45	2.79		69	0.13	
23	1.70		46	0.70		70		(0.03)
24	1.62	(0.65)	47	0.83		71		(0.06)
25	0.35	(0.03)	48	0.16		<b>TOTAL</b>	<b>47.53</b>	<b>11.27</b>
26	0.17		49		(0.70)			

**MILEAGE SUMMARY**

CLASS 2		
TH-1	6.790	
TH-2	3.830	
<b>TOTAL CLASS 2</b>		10.610
CLASS 3		
<b>TOTAL CLASS 3</b>		47.53
<b>TOTAL TOWN</b>		<b>58.140</b>
STATE HIGHWAY		
VT-103	7.683	
VT-140	0.152	
VT-155	7.603	
<b>TOTAL STATE HIGHWAY</b>		15.438
<b>TOTAL STATE</b>		<b>15.438</b>
<b>TOTAL, TRAVELED HIGHWAYS, FEB. 10, 2014:</b>		<b>73.578</b>

(Excludes Class 4, Legal Trail, and Undefined Corridor Mileage)



TOWN HWY. No.	LENGTH IN MILES "NOT UP TO STANDARD"
25	(0.12)
29	(0.18)
60	(0.21)
<b>TOTAL</b>	<b>0.51</b>

\*The sections of the town highways listed above are legally Class 3, but have been deemed "Not Up To Standard" and are functionally Class 4 Town Highways

- HIGHWAYS**
- INTERSTATE
  - U.S. ROUTE
  - STATE ROUTE
  - CLASS 1
  - CLASS 2
  - CLASS 3
  - CLASS 4
  - LEGAL TRAIL
  - INTERSTATE OR DIVIDED HIGHWAY
  - STATE - HARD SURFACE OR PAVED
  - TOWN - HARD SURFACE OR PAVED
  - GRAVEL
  - SOIL OR GRADED AND DRAINED EARTH
  - UNIMPROVED OR PRIMITIVE
  - IMPASSABLE OR UNTRAVELED
  - LEGAL TRAIL
  - DISCONTINUED
  - HIGHWAY CLASS CHANGE
  - RAILROAD
  - INACTIVE RAILROAD
  - NFR NATIONAL FOREST ROAD
  - SFH STATE FOREST HIGHWAY
  - P PARK AND RIDE
- POLITICAL SUBDIVISIONS**
- STATE BOUNDARY
  - COUNTY BOUNDARY
  - TOWN BOUNDARY
  - VILLAGE BOUNDARY
  - URBAN COMPACT BOUNDARY
  - WATER BODY
  - STREAM OR BROOK
- BRIDGE OR CULVERT**
- BRIDGE OR CULVERT > 20'
  - BRIDGE OR CULVERT 6' - 20'
  - VOBCIT BRIDGE
  - VOBCIT CULVERT > 6'
  - STATE BRIDGE OR CULVERT IDENTIFIER
  - TOWN BRIDGE OR CULVERT IDENTIFIER
- PUBLIC LAND - GREEN MOUNTAIN NATIONAL FOREST**
- PUBLIC LAND - STATE/MUNICIPAL**
- FEDERAL CLASSIFICATION IDENTIFIER**
- FAU URBAN ARTERIAL OR COLLECTOR
  - MA MINOR ARTERIAL
  - MJC MAJOR COLLECTOR
  - MNC MINOR COLLECTOR
  - PA PRINCIPAL ARTERIAL

**DISCLAIMER:**  
The untraveled highways (laid-out town highways), discontinued highways, and legal trails hereon are those of which the Agency of Transportation has record; others may exist.

Highway and bridge data by the Agency of Transportation. Town short structures are drawn from the Vermont Online Bridge & Culvert Inventory Tool (VOBCIT) database. All other data from the Vermont Center for Geographic Information. Only named streams are shown.

Vermont State Plane Coordinate System  
North American Datum of 1983  
SPCS\_Zone\_Identifier: 4400  
Geodetic Reference System 80  
4,000-meter grid, Easting - Northing

**VERMONT**  
**GENERAL HIGHWAY MAP**  
**Town of Mount Holly**

RUTLAND COUNTY  
Transportation District #3  
Prepared by the  
Vermont Agency of Transportation  
Division of Policy, Planning and Intermodal Development  
in cooperation with  
U.S. Department of Transportation  
Federal Highway Administration

