

TOWN HWY. NO.	CLASS 3	CLASS 4	MILES	(%)
4	3.62		37	1.52 (0.33)
5	2.23		38	0.21 (0.60)
6	1.51		39	
7	0.04		40	1.39 (0.16)
8	0.70		41	0.07
9	0.17		42	1.86
10	1.67 (1.00)		43	0.55
11	0.70 (1.22)		44	1.93
12	1.27		45	2.79
13	0.53		46	0.70
14	0.40 (0.50)		47	0.83
15	0.81 (0.50)		48	0.16
16	0.70		49	
17	2.35 (0.81)		50	0.10 (0.70)
18	1.05		51	0.09
19	0.75 (0.45)		52	0.04
20	1.30 (0.42)		53	0.02
21	0.49		54	0.02
22	1.00		55	0.17
23	1.70		56	0.17
24	1.62 (0.65)		57	0.83
25	0.35 (0.03)		58	0.22
26	0.17		59	
27	1.79		60	0.20 (0.35)
28	0.20		61	0.56 (0.21)
29	0.34 (0.26)		62	0.31
30	0.18		63	0.04
31	1.74		64	0.15
32	0.16 (0.09)		65	0.38
33	0.16 (1.54)		66	0.10
34	0.17		67	0.11
35	1.11		68	0.60
36	0.32		69	0.13
	0.25 (1.57)		70	
TOTAL			47.62	11.72

* This portion of town highway is Class 3, but is functionally Class 4

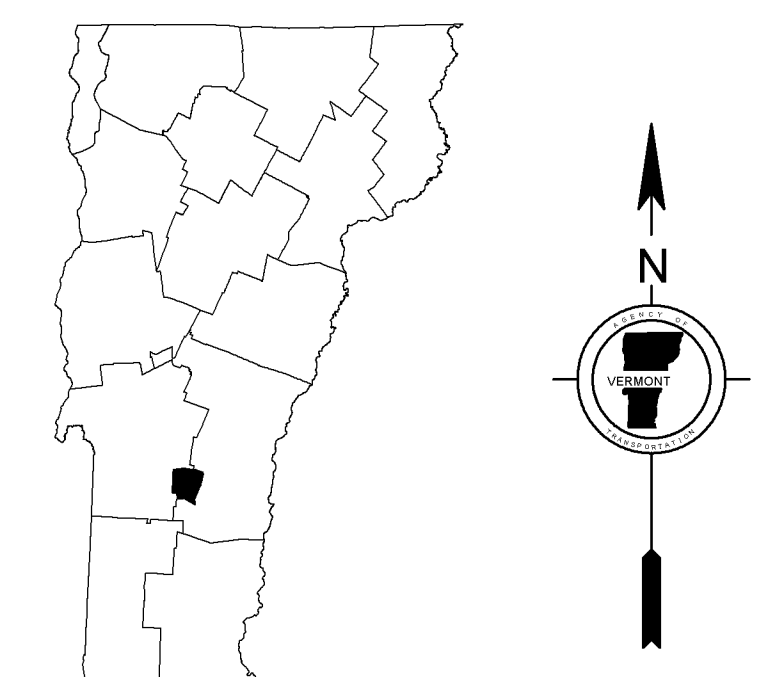
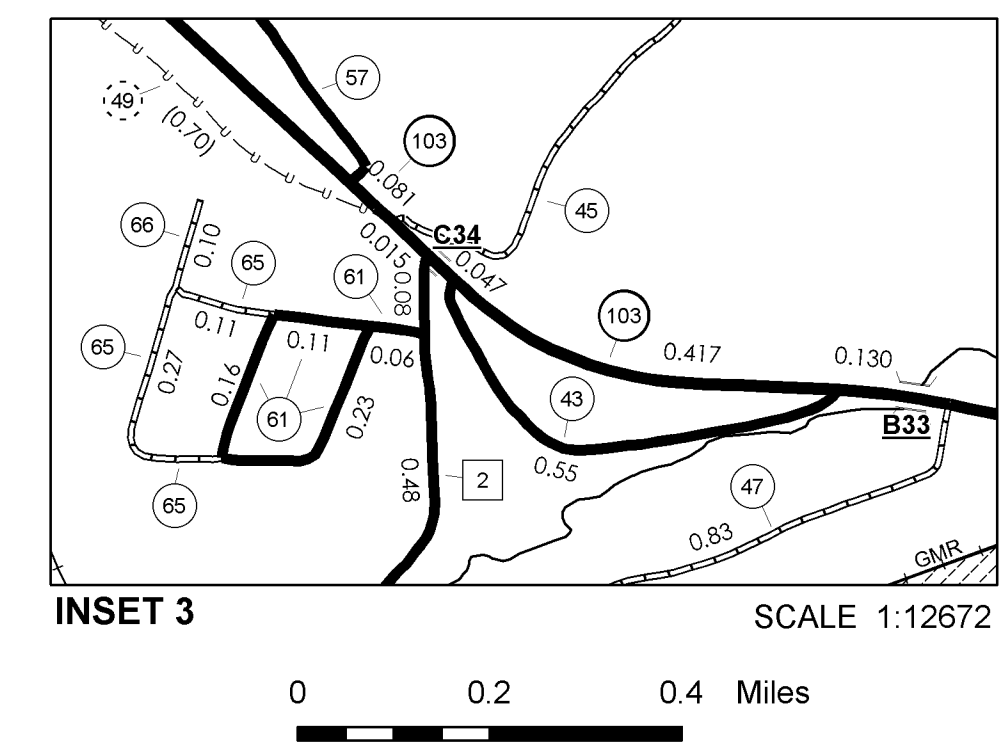
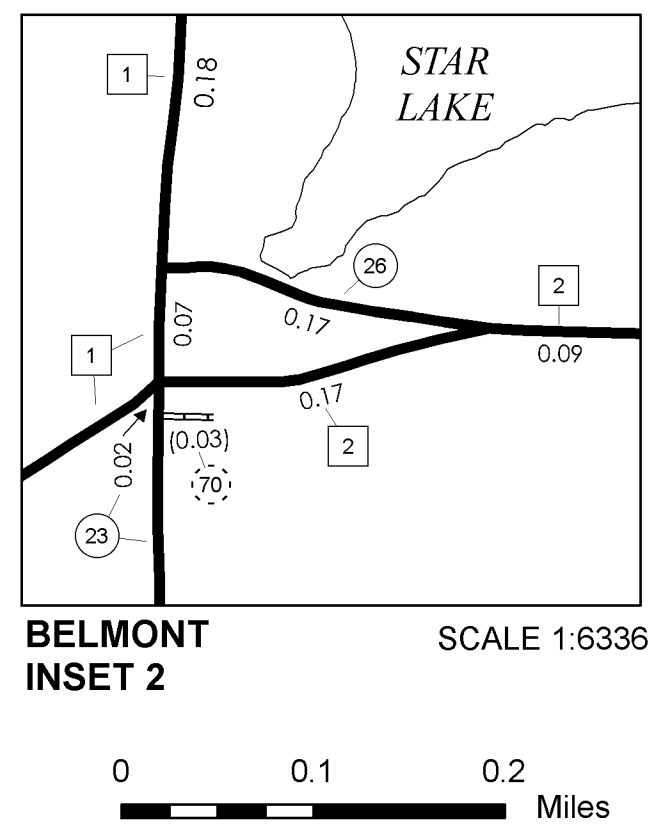
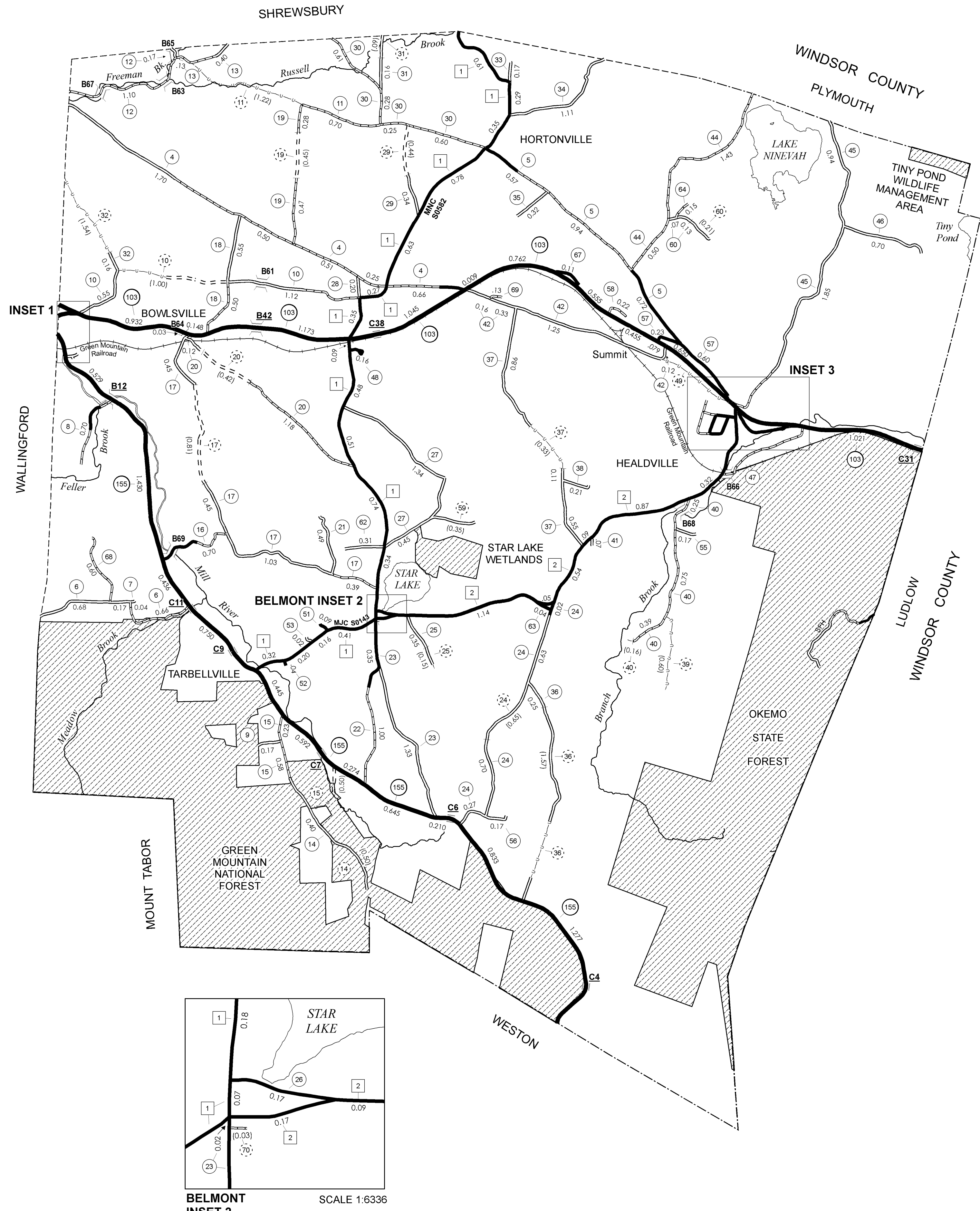
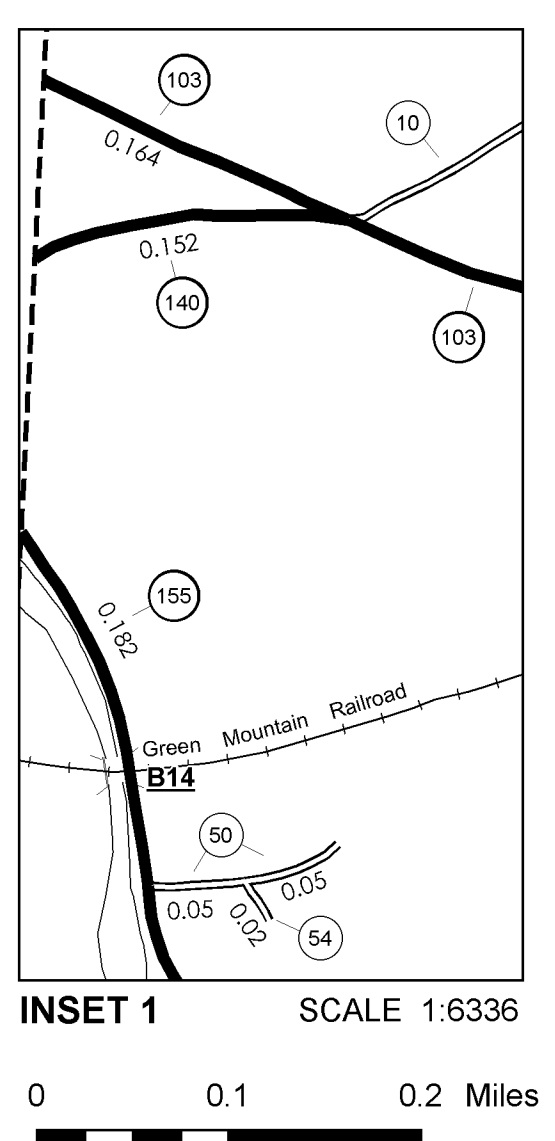
MILEAGE SUMMARY			
CLASS 2			
TH-1	6.780		
TH-2	3.830		
TOTAL CLASS 2	10.610		
CLASS 3			
TOTAL CLASS 3	47.620		
TOTAL TOWN	58.230		
STATE HIGHWAY			
VT-103	7.683		
VT-140	0.152		
VT-155	7.603		
TOTAL STATE HIGHWAY	15.438		
TOTAL STATE	15.438		

TOTAL, TRAVELED HIGHWAYS, FEB. 10, 2008: 73.668
(Excludes Class 4 and Legal Trail Mileage)

- HIGHWAYS**
- INTERSTATE
- U.S. ROUTE
- STATE ROUTE
- CLASS 1
- CLASS 2
- CLASS 3
- CLASS 4
- LEGAL TRAIL
- INTERSTATE OR DIVIDED HIGHWAY
- STATE - HARD SURFACE OR PAVED
- TOWN - HARD SURFACE OR PAVED
- STATE FOREST - HARD SURFACE
- GRAVEL
- SOIL OR GRADED AND DRAINED EARTH
- UNIMPROVED OR PRIMITIVE
- IMPASSABLE OR UNTRAVELED
- HIGHWAY CLASS CHANGE
- LEGAL TRAIL
- DISCONTINUED
- RAILROAD
- PUBLIC LAND
- POLITICAL SUBDIVISIONS
- STATE BOUNDARY
- COUNTY BOUNDARY
- TOWN BOUNDARY
- VILLAGE BOUNDARY
- URBAN COMPACT BOUNDARY
- OPEN WATER
- STREAM OR BROOK
- BRIDGE OR CULVERT
- BRIDGE OR CULVERT GREATER THAN 20'
- BRIDGE OR CULVERT 6' - 20'
- B34 / C34 STATE BRIDGE OR CULVERT IDENTIFIER
- B34 / C34 TOWN BRIDGE OR CULVERT IDENTIFIER
- SFH STATE FOREST HIGHWAY
- FEDERAL CLASSIFICATION IDENTIFIER
- FAU URBAN ARTERIAL OR COLLECTOR
- MA MINOR ARTERIAL
- MJC MAJOR COLLECTOR
- MNC MINOR COLLECTOR
- PA PRINCIPAL ARTERIAL

DISCLAIMER:
The untraveled highways (laid-out town highways), discontinued highways, and legal trails shown hereon are those of which the Agency of Transportation has record; others may exist.
Highway and bridge data by the Agency of Transportation, Policy & Planning Division. All other data from the Vermont Center for Geographic Information.

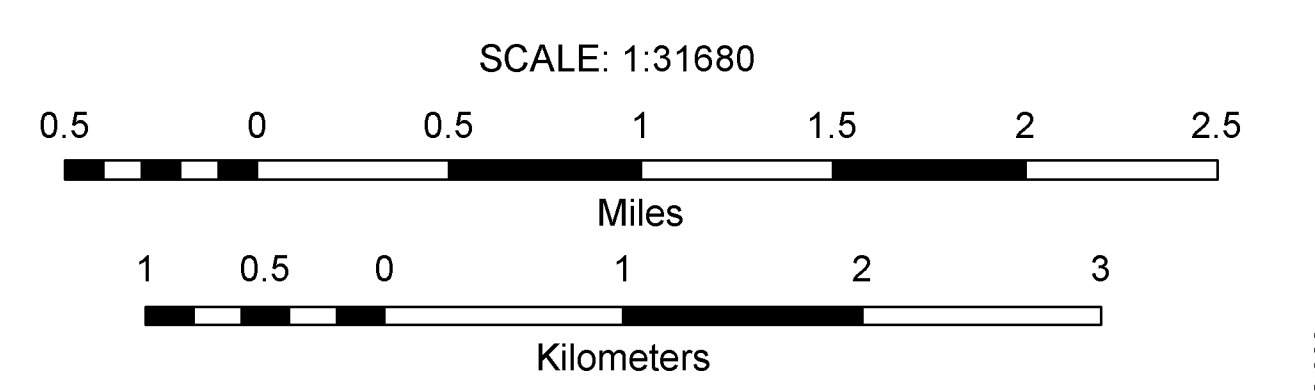
Vermont State Plane Coordinate System
North American Datum of 1983
SPCS Zone Identifier: 4400
Geodetic Reference System 80
4,000-meter grid, Easting - Northing



VERMONT
GENERAL HIGHWAY MAP
Town of Mount Holly
RUTLAND COUNTY
Transportation District #3

Prepared by the
Vermont Agency of Transportation
Policy & Planning Division
in cooperation with
U.S. Department of Transportation
Federal Highway Administration

Mileage as of: Feb. 10, 2008
Map generated: September, 2008



STRUCTURES - SURFACE WATER NOTE:
Town short structures (bridges or culverts from 6-feet to less than 20-feet) were not represented due to inconsistencies in the data.
The surface waters are from the Vermont Hydrological Dataset (VHD). Only the named streams are shown.