

TOWN HWY. No.	LENGTH IN MILES CLASS 3	CLASS 4
5	3.23	
6	0.23	
7	2.50	
8	0.10	
9	0.30	(0.45)
10	0.35	
11	0.25	
12	0.10	
13	0.40	
14	2.85	(1.85)
15	0.40	
16	2.15	
17	0.40	(0.15)
18	1.57	(0.57)
19		(0.03)
21		(0.20)
22	0.32	
23	2.27	(0.40)
25	0.13	
26	0.13	
27	0.37	
28	0.04	
29	0.03	
30	0.06	(0.09)
31	0.18	
32	0.95	(1.15)
33	0.20	
34	2.94	
35		(0.60)
36	1.00	
37	2.95	
38	0.65	
39	0.30	
40	0.68	
41	0.64	
42	0.70	
44	0.20	
45	0.15	
47	2.25	(0.66)
48	1.28	(0.02)
49		
50	0.30	
51	0.65	
52	0.29	
53	0.06	
54	0.85	(0.10)
56	0.12	(0.33)
60	0.10	
62	0.12	
63	0.10	
64	0.06	
65	0.06	
66	0.04	
67	0.07	
68	0.04	
69	0.02	
70	0.06	
71	0.11	
72	0.08	
73	0.14	
74	0.24	
75	0.16	
76	0.12	
77	0.05	
78	0.10	
80	0.10	
TOTAL	37.29	6.60

MILEAGE SUMMARY

CLASS 2		
TH-1	3.320	
TH-2	6.900	
TH-3	2.880	
TH-4	1.220	
TOTAL CLASS 2		14.320
CLASS 3		
TOTAL CLASS 3		37.29
TOTAL TOWN		51.610
STATE HIGHWAY		
VT-16	6.700	
VT-122	1.559	
TOTAL STATE HIGHWAY		8.259
TOTAL STATE		8.259
INTERSTATE		
I-91	0.558	
TOTAL INTERSTATE		0.558
TOTAL INTERSTATES		0.558
TOTAL, TRAVELED HIGHWAYS, FEB. 10, 2015:		60.427

(Excludes Class 4, Legal Trail, and Unidentified Corridor Mileage)

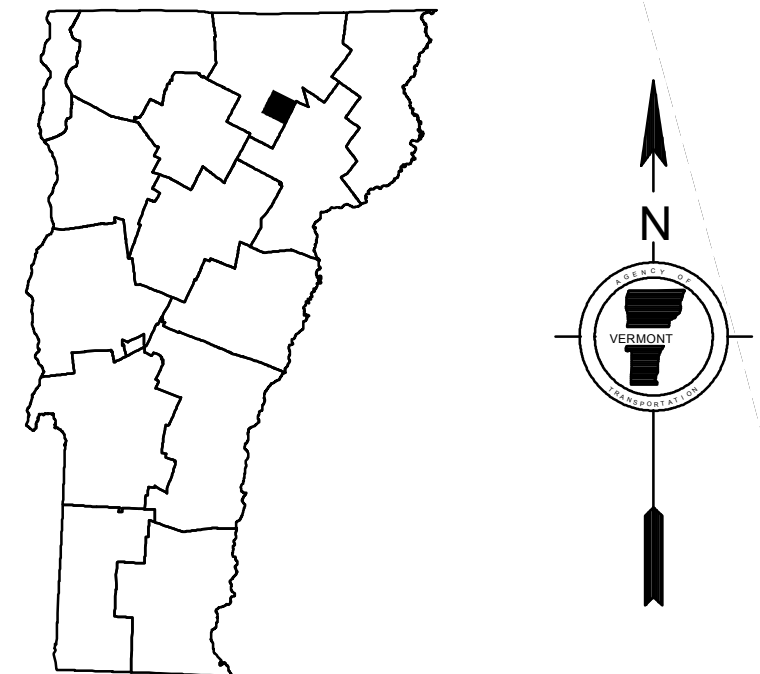
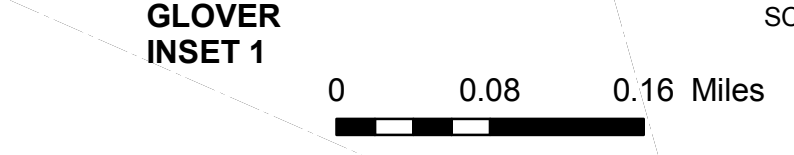
TOWN HWY. No. LENGTH IN MILES "NOT UP TO STANDARD"

61	(0.10)
79	(0.13)
TOTAL	0.23

* The sections of the town highways listed above are legally Class 3, but have been deemed "Not Up To Standard" and are functionally Class 4 Town Highways

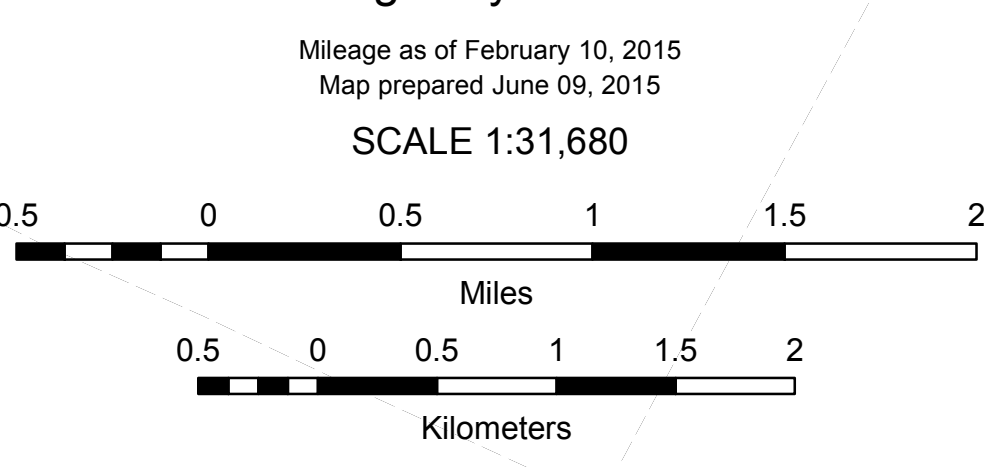
LEGAL TRAIL No. LENGTH IN MILES LEGAL TRAIL

1	(0.55)
2	(0.22)
3	(0.35)
TOTAL	1.12



VERMONT
GENERAL HIGHWAY MAP
Town of Glover
 ORLEANS COUNTY

Transportation District #9
 Prepared by the
 Vermont Agency of Transportation
 Division of Policy, Planning and Intermodal Development
 in cooperation with
 U.S. Department of Transportation
 Federal Highway Administration



DISCLAIMER:
 The untraveled highways (laid-out town highways), discontinued highways, and legal trails hereon are those of which the Agency of Transportation has record; others may exist.

Highway and bridge data by the Agency of Transportation. Town short structures are drawn from the Vermont Online Bridge & Culvert Inventory Tool (VOBCIT) database. All other data from the Vermont Center for Geographic Information. Only named streams are shown.

Vermont State Plane Coordinate System
 North American Datum of 1983
 SPCS_Zone_Identifier: 4400
 Geodetic Reference System 80
 4,000-meter grid, Easting - Northing