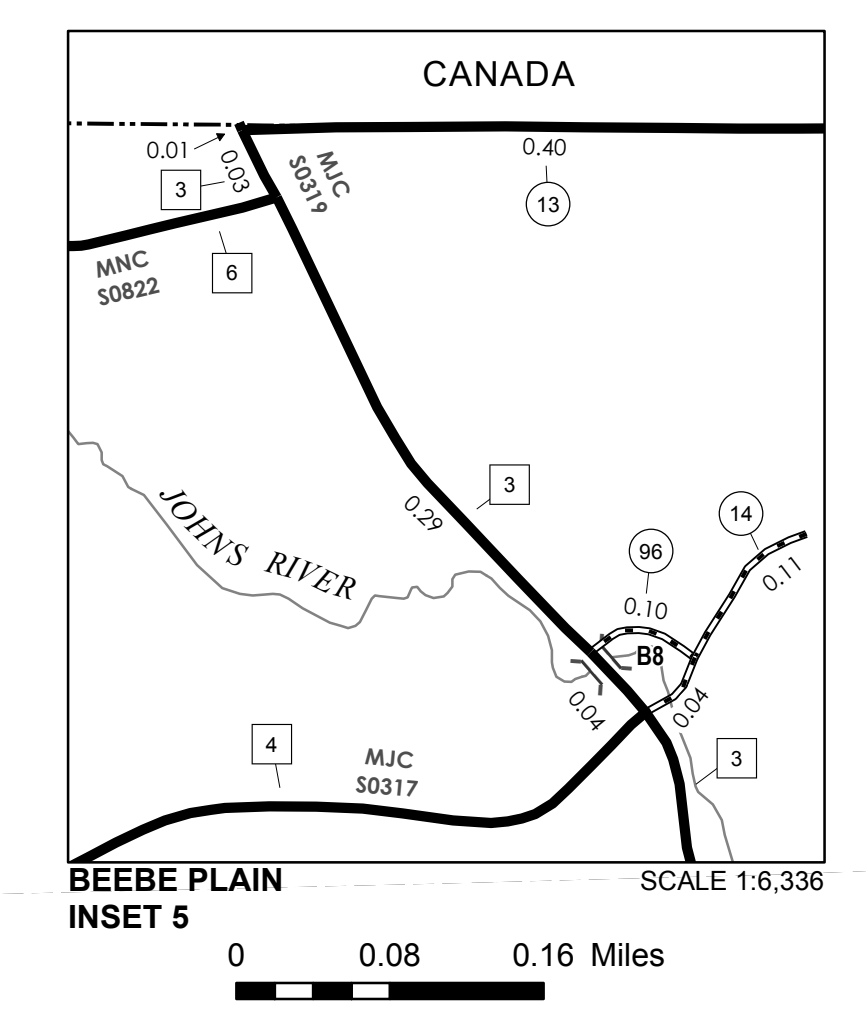
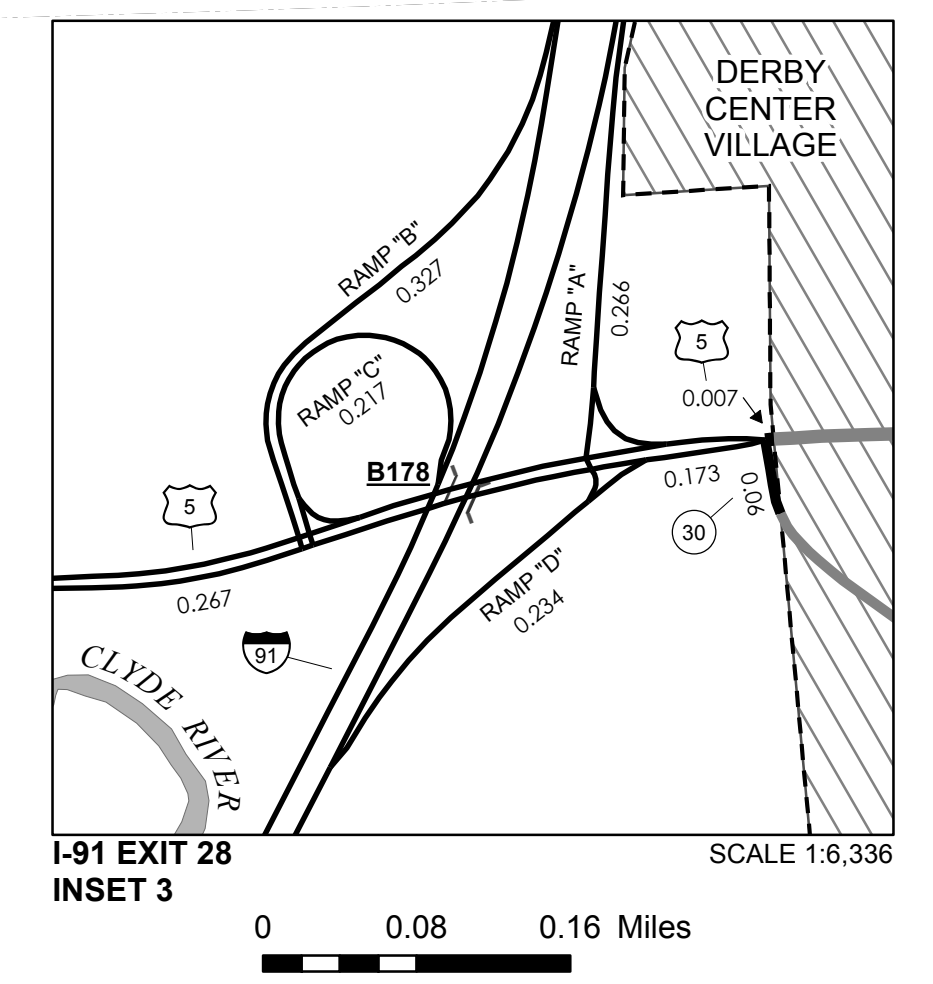
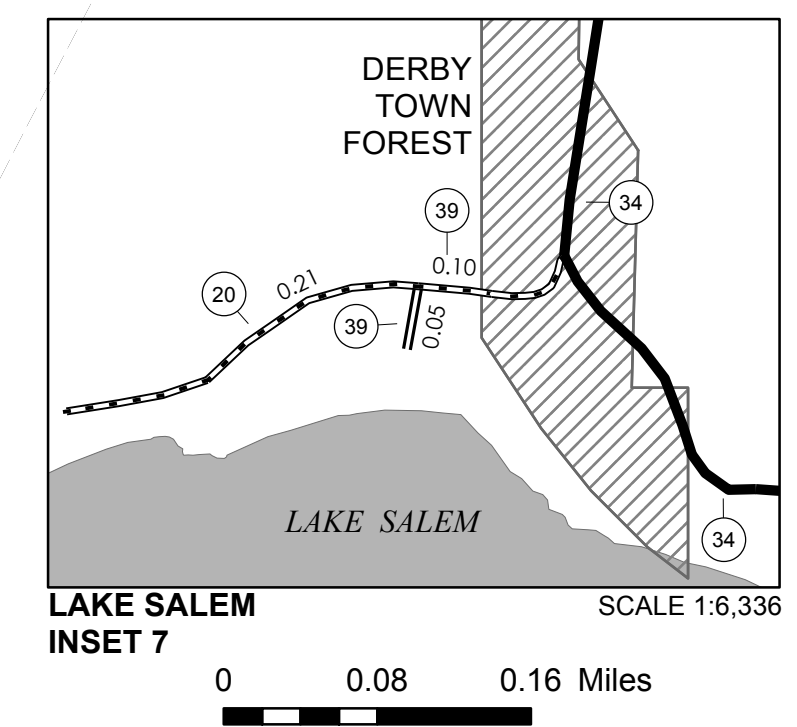
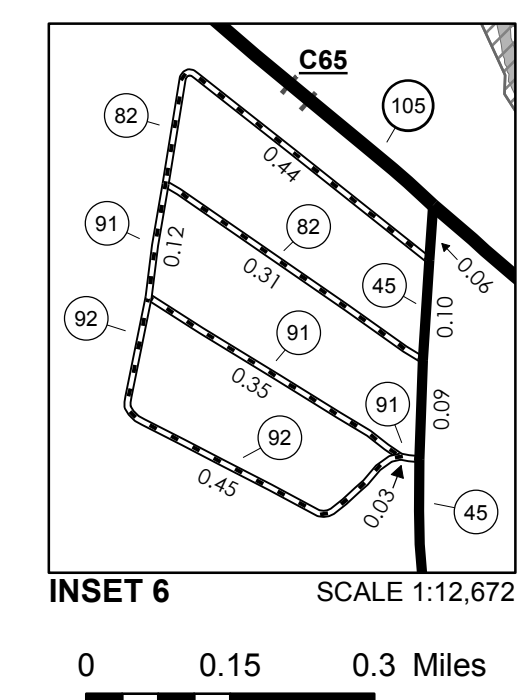
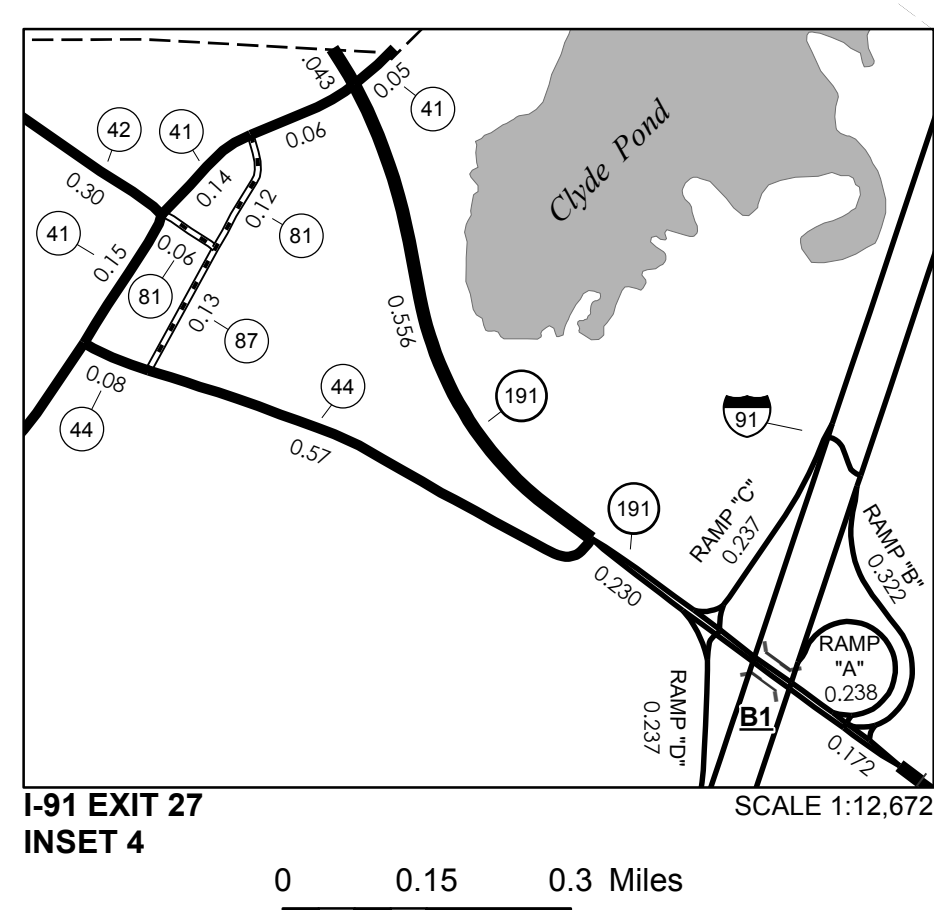
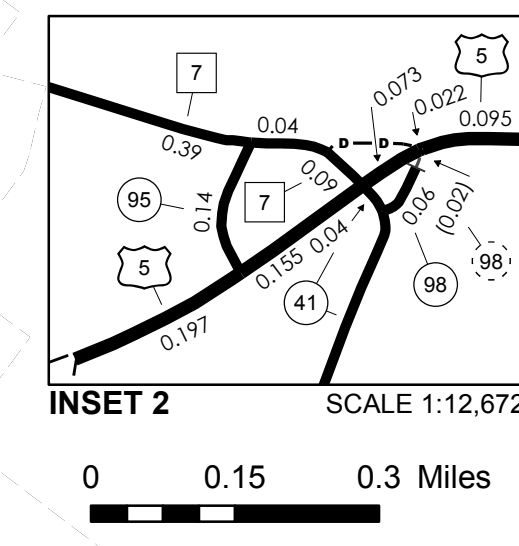
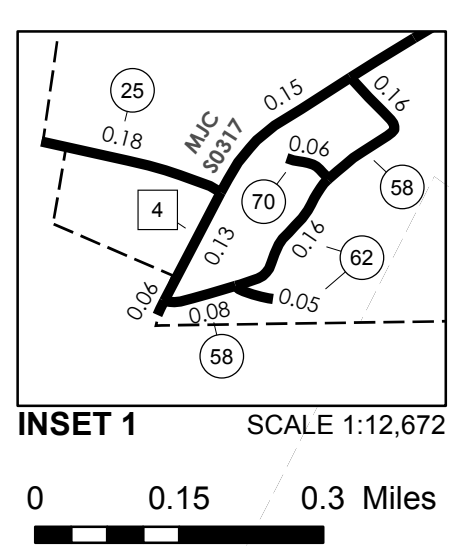


TOWN HWY. No.	LENGTH IN MILES CLASS 3	CLASS 4
6	0.14	
8	0.16	
11	0.20	
12	0.55	
13	0.40	
14	0.15	
16	0.50	(0.51)
17	1.77	
18	1.68	
19	0.07	
20	0.21	
21	0.75	
22	5.98	
23	0.95	
24	0.40	
25	0.18	
27	1.50	
28	0.60	
29	0.15	
30	0.85	
31	0.95	
32	0.53	
33	0.90	(0.45)
34	1.02	
35	1.30	
36	0.57	
37	0.18	
38	2.30	(0.75)
39	0.15	
40	0.80	
41	4.21	
42	0.30	
43	0.60	(0.40)
44	0.65	
45	4.35	
46	0.10	
47	0.70	(0.40)
49	0.80	
50	1.15	
51	0.05	
52	0.15	
53	1.10	
54	3.99	
55	0.10	(0.36)
56	1.05	
57	0.15	
58	0.40	
59	0.61	
60	0.52	
61	0.50	
62	0.05	
63	0.46	
64	0.04	
65	0.17	
66	1.62	
67	0.35	
69	0.17	
70	0.06	
78	0.12	
81	0.18	
82	0.75	
83	0.21	
84	0.10	
86	0.58	
87	0.13	
88	0.24	
89	0.32	
90	0.43	
91	0.50	
92	0.45	
93	0.08	
94	0.37	
95	0.14	
96	0.10	
97	0.08	
98	0.06	
99	0.33	
TOTAL	55.46	2.87

MILEAGE SUMMARY

CLASS	LENGTH IN MILES	TOTAL
CLASS 2		
TH-1	2.240	
TH-2	1.390	
TH-3	3.160	
TH-4	4.780	
TH-5	4.660	
TH-6	4.320	
TH-7	1.300	
TOTAL CLASS 2		21.850
CLASS 3		
TOTAL CLASS 3		55.46
TOTAL TOWN		77.310
STATE HIGHWAY		
VT-105	4.839	
VT-111	3.775	
VT-191	1.001	
TOTAL STATE HIGHWAY		9.615
US HIGHWAY		
US-5	5.118	
TOTAL US HIGHWAY		5.118
TOTAL STATE HIGHWAY		14.733
INTERSTATE		
I-91	8.533	
TOTAL INTERSTATE		8.533
INTERSTATE - Ramps		
I-91	2.196	
TOTAL INTERSTATE - Ramps		2.196
TOTAL INTERSTATE		10.729
TOTAL, TRAVELED HIGHWAYS, FEB. 10, 2014:		102.772

(Excludes Class 4, Legal Trail, and Unidentified Corridor Mileage)



LEGAL TRAIL

TOWN HWY. No.	LENGTH IN MILES "NOT UP TO STANDARD"
1	(0.17)
2	(1.79)
3	(0.77)
4	(0.56)
5	(1.12)
6	(0.70)
7	(0.01)
8	(0.95)
9	(0.32)
10	(0.60)
11	(0.20)
12	(0.45)
13	(0.64)
TOTAL	8.28

TOWN HWY. No.

7 (0.21)
9 (0.05)
56 (0.10)
59 (0.35)
98 (0.02)
TOTAL 0.73

* The sections of the town highways listed above are legally Class 3, but have been deemed "Not Up To Standard" and are functionally Class 4 Town Highways

- HIGHWAYS**
- INTERSTATE OR DIVIDED HIGHWAY
 - STATE - HARD SURFACE OR PAVED
 - TOWN - HARD SURFACE OR PAVED
 - GRAVEL
 - SOIL OR GRADED AND DRAINED EARTH
 - UNIMPROVED OR PRIMITIVE
 - IMPASSABLE OR UNTRAVELED
 - LEGAL TRAIL
 - DISCONTINUED
 - HIGHWAY CLASS CHANGE
 - RAILROAD
 - INACTIVE RAILROAD
 - NATIONAL FOREST ROAD
 - STATE FOREST HIGHWAY
 - PARK AND RIDE
- POLITICAL SUBDIVISIONS**
- STATE BOUNDARY
 - COUNTY BOUNDARY
 - TOWN BOUNDARY
 - VILLAGE BOUNDARY
 - URBAN COMPACT BOUNDARY
 - WATER BODY
 - STREAM OR BROOK
- BRIDGE OR CULVERT**
- BRIDGE OR CULVERT > 20'
 - BRIDGE OR CULVERT 6' - 20'
 - VOBCIT BRIDGE
 - VOBCIT CULVERT > 6'
 - STATE BRIDGE OR CULVERT IDENTIFIER
 - TOWN BRIDGE OR CULVERT IDENTIFIER
- FEDERAL CLASSIFICATION IDENTIFIER**
- FAU - URBAN ARTERIAL OR COLLECTOR
 - MA - MINOR ARTERIAL
 - MJC - MAJOR COLLECTOR
 - MNC - MINOR COLLECTOR
 - PA - PRINCIPAL ARTERIAL

DISCLAIMER:
The untraveled highways (laid-out town highways), discontinued highways, and legal trails herein are those of which the Agency of Transportation has record; others may exist.

Highway and bridge data by the Agency of Transportation. Town short structures are drawn from the Vermont Online Bridge & Culvert Inventory Tool (VOBCIT) database. All other data from the Vermont Center for Geographic Information. Only named streams are shown.

VERMONT GENERAL HIGHWAY MAP
Town of Derby
ORLEANS COUNTY
Transportation District #9

Prepared by the
Vermont Agency of Transportation
Division of Policy, Planning and Intermodal Development
in cooperation with
U.S. Department of Transportation
Federal Highway Administration

Mileage as of February 10, 2014
Map prepared October 02, 2014
SCALE 1:31,680

0.5 0 0.5 1 1.5 2 Miles
0.5 0 0.5 1 1.5 2 Kilometers