

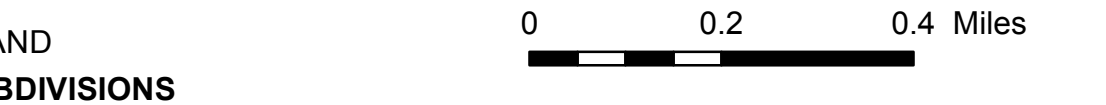
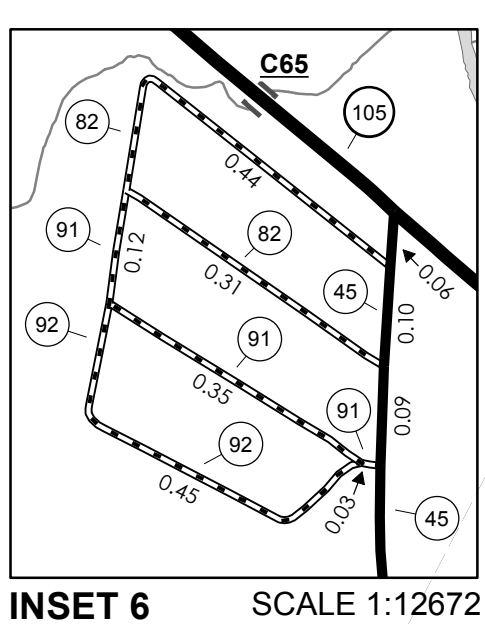
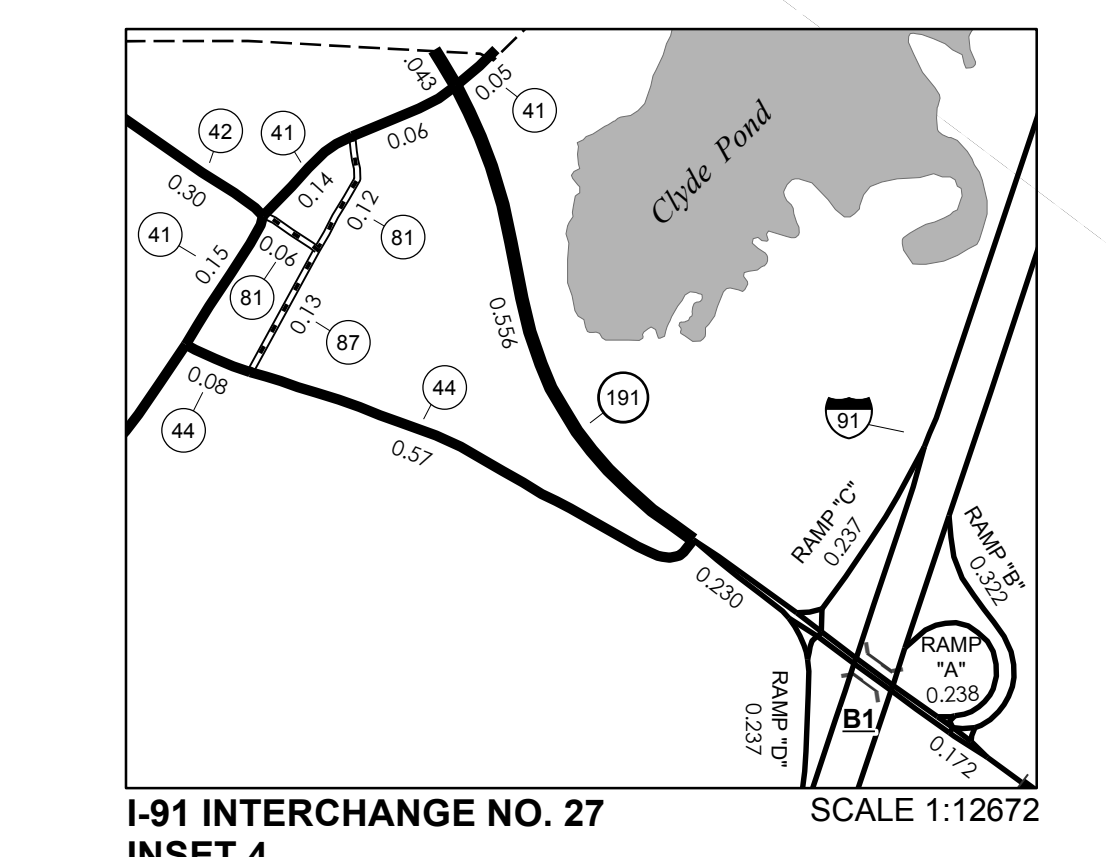
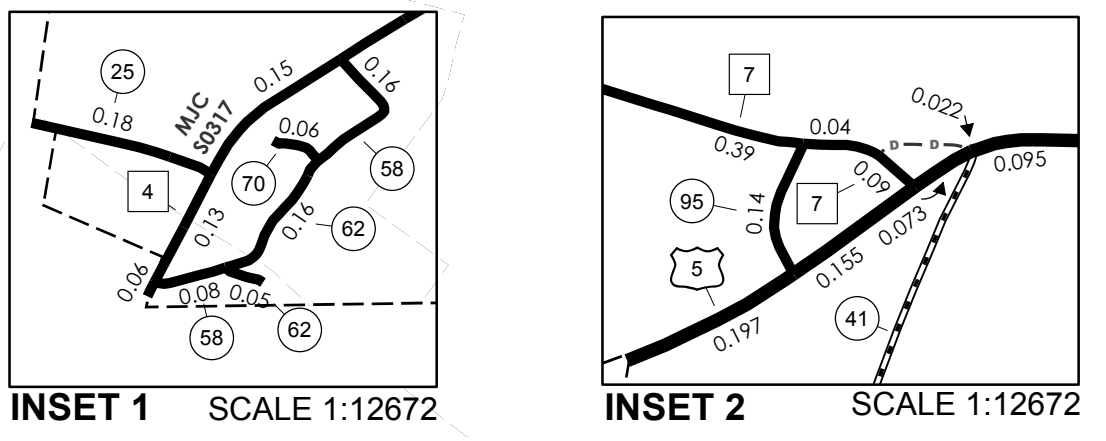
TOWN HWY. NO.	LENGTH IN MILES	CLASS	CLASS 4
6	0.140		47
7		(0.210)	49
8	0.160		50
9		(0.050)	51
11	0.200		52
12	0.550		53
13	0.400		54
14	0.150		55
16		(0.510)	56
16	0.500		56
17	1.770		56
18	1.680		57
19	0.070		58
20	0.210		59
21	0.750		59
22	5.980		60
23	0.950		61
24	0.400		62
25	0.180		63
27	1.500		64
28	0.600		65
29	0.150		66
30	0.850		67
31	0.950		69
32	0.530		70
33	0.900		78
34		(0.450)	81
35	1.020		82
36	1.300		83
37	0.570		84
37	0.180		86
37		(0.750)	87
38	2.300		88
39	0.150		89
40	0.800		90
41	4.250		91
42	0.300		92
43	0.600		93
44	0.650		94
45	4.350		96
46	0.100		97
47	0.700		97
TOTAL	55.110		3,580

LEGAL TRAIL NO.	LENGTH IN MILES
1	(0.17)
2	(1.79)
3	(0.77)
4	(0.56)
5	(1.12)
6	(0.13)
7	(0.01)
8	(0.95)
9	(0.32)
10	(0.60)
11	(0.20)
12	(0.45)
13	(0.64)
TOTAL	8.28

* Portion of this town highway is Class 3, but is functionally Class 4

MILEAGE SUMMARY	
CLASS 2	
TH-1	2.240
TH-2	1.390
TH-3	3.160
TH-4	4.780
TH-5	4.750
TH-6	4.320
TH-7	1.300
TOTAL CLASS 2	21.940
CLASS 3	
TOTAL CLASS 3	55.110
TOTAL TOWN	77.050
STATE HIGHWAY	
VT-105	4.839
VT-111	3.775
VT-191	1.001
TOTAL STATE HIGHWAY	9.615
US HIGHWAY	
US-5	5.118
TOTAL US HIGHWAY	5.118
US HIGHWAY - Ramp	
US-5	0.000
TOTAL US HIGHWAY - Ramp	0.000
TOTAL STATE	14.733
INTERSTATE	
I-91	8.533
TOTAL INTERSTATE	8.533
INTERSTATE - Ramp	
I-91	2.196
TOTAL INTERSTATE - Ramp	2.196
TOTAL INTERSTATE	10.729

TOTAL, TRAVELED HIGHWAYS, FEB. 10, 2011: 102.512
(Excludes Class 4, Legal Trail, and Unidentified Corridor Mileage)

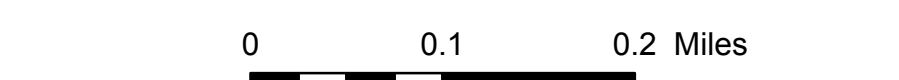
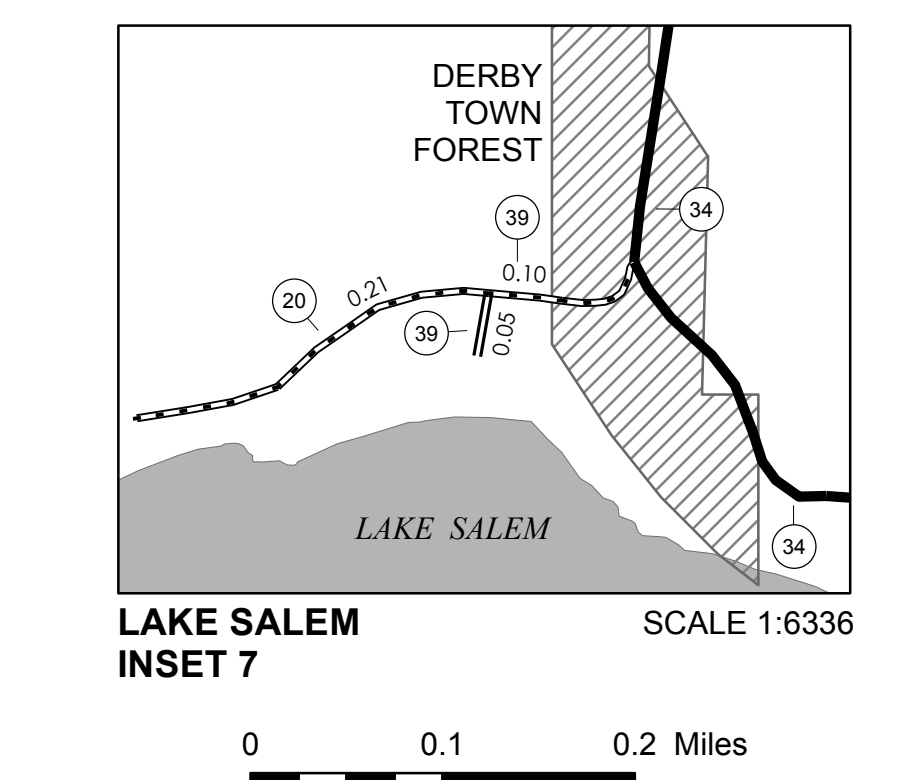
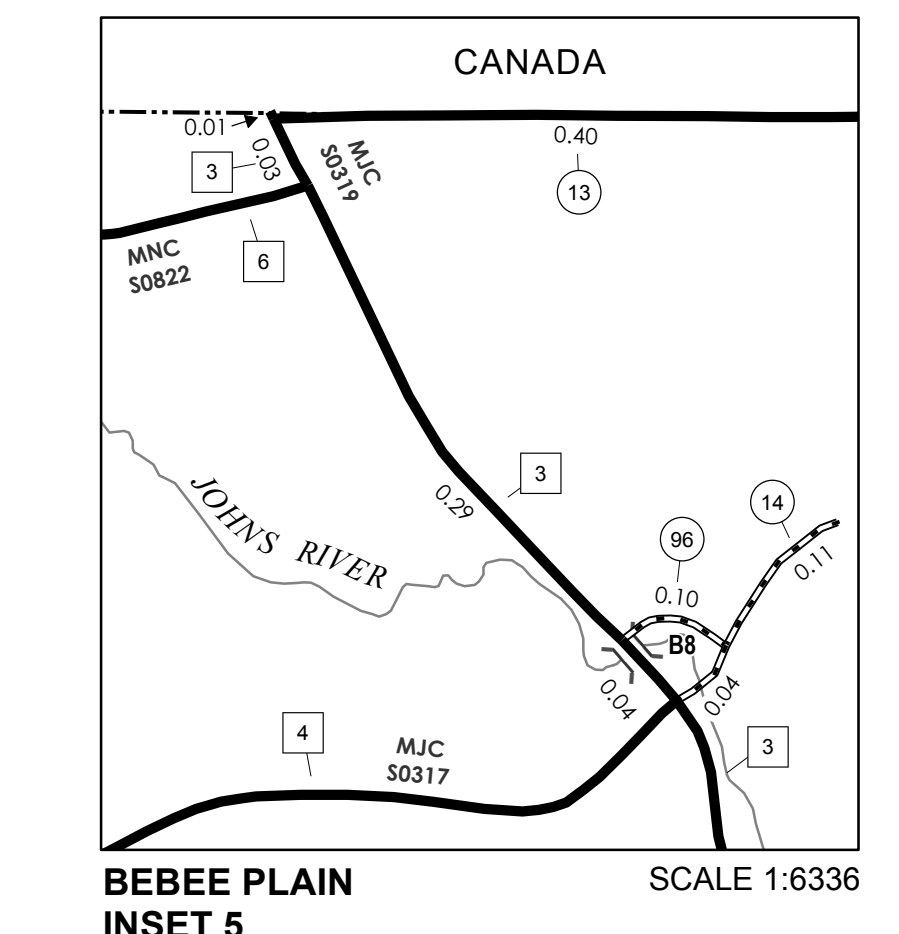
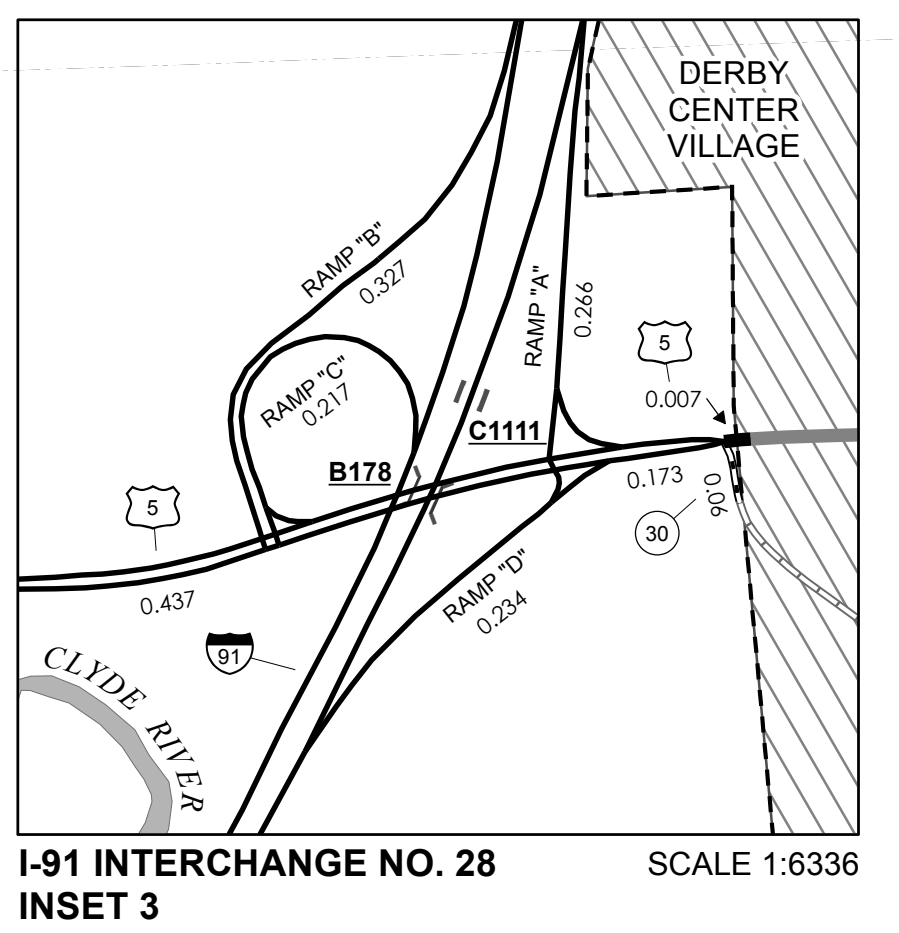
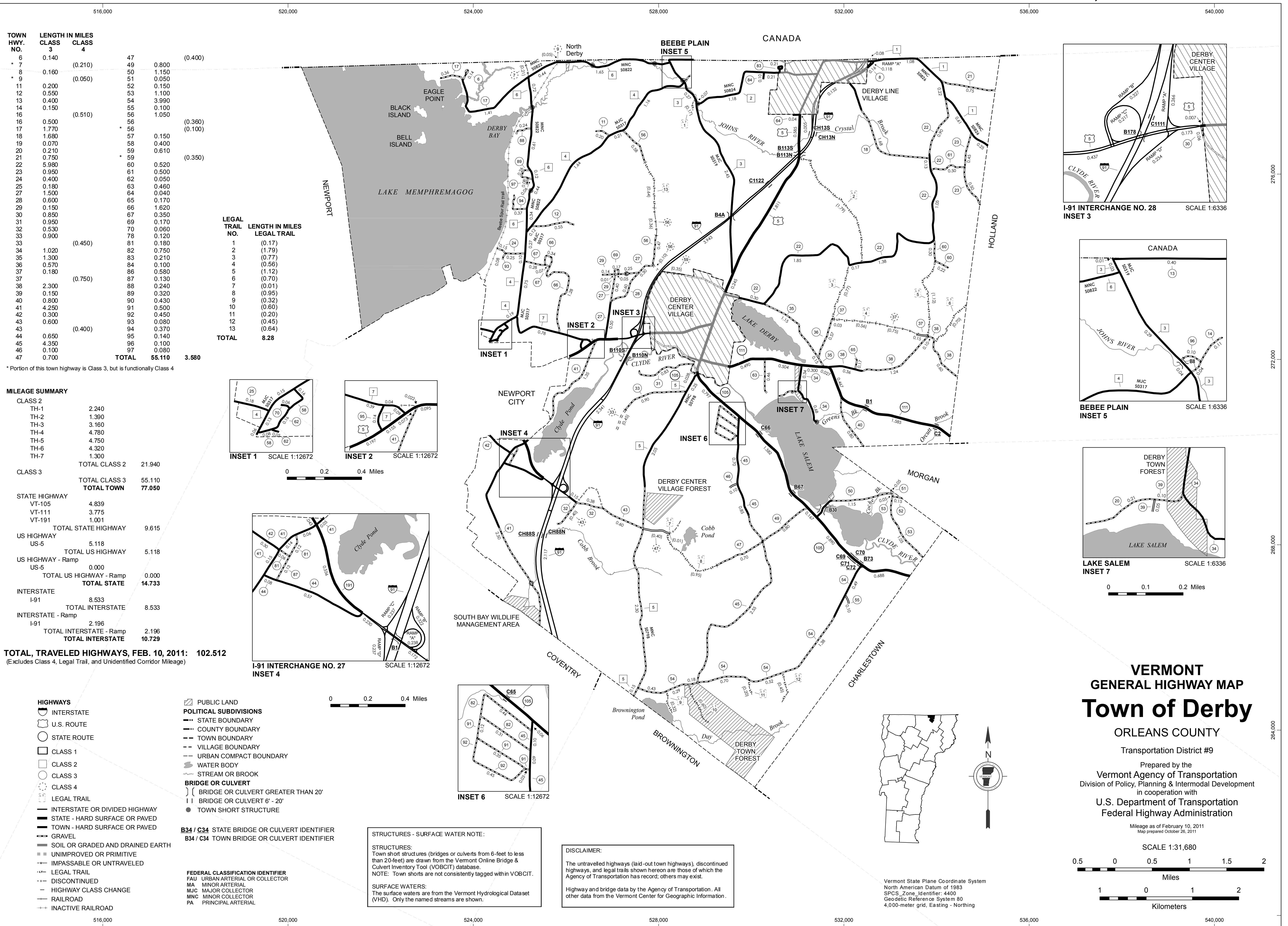


- HIGHWAYS**
 - INTERSTATE
 - U.S. ROUTE
 - STATE ROUTE
 - CLASS 1
 - CLASS 2
 - CLASS 3
 - CLASS 4
 - LEGAL TRAIL
 - INTERSTATE OR DIVIDED HIGHWAY
 - STATE - HARD SURFACE OR PAVED
 - TOWN - HARD SURFACE OR PAVED
 - GRAVEL
 - SOIL OR GRADED AND DRAINED EARTH
 - UNIMPROVED OR PRIMITIVE
 - IMPASSABLE OR UNTRAVELED
 - LEGAL TRAIL
 - DISCONTINUED
 - HIGHWAY CLASS CHANGE
 - RAILROAD
 - INACTIVE RAILROAD
- PUBLIC LAND**
- POLITICAL SUBDIVISIONS**
 - STATE BOUNDARY
 - COUNTY BOUNDARY
 - TOWN BOUNDARY
 - VILLAGE BOUNDARY
 - URBAN COMPACT BOUNDARY
 - WATER BODY
 - STREAM OR BROOK
- BRIDGE OR CULVERT**
 - BRIDGE OR CULVERT GREATER THAN 20'
 - BRIDGE OR CULVERT 6' - 20'
 - TOWN SHORT STRUCTURE
- FEDERAL CLASSIFICATION IDENTIFIER**
 - FAU URBAN ARTERIAL OR COLLECTOR
 - MA MINOR ARTERIAL
 - MJC MAJOR COLLECTOR
 - MNC MINOR COLLECTOR
 - PA PRINCIPAL ARTERIAL

B34 / C34 STATE BRIDGE OR CULVERT IDENTIFIER
B34 / C34 TOWN BRIDGE OR CULVERT IDENTIFIER

STRUCTURES - SURFACE WATER NOTE:
STRUCTURES: Town short structures (bridges or culverts from 6-feet to less than 20-feet) are drawn from the Vermont Online Bridge & Culvert Inventory Tool (VOBCIT) database.
NOTE: Town shorts are not consistently tagged within VOBCIT.
SURFACE WATERS: The surface waters are from the Vermont Hydrological Dataset (VHD). Only the named streams are shown.

DISCLAIMER:
The untraveled highways (laid-out town highways), discontinued highways, and legal trails shown hereon are those of which the Agency of Transportation has record; others may exist.
Highway and bridge data by the Agency of Transportation. All other data from the Vermont Center for Geographic Information.



VERMONT GENERAL HIGHWAY MAP
Town of Derby
ORLEANS COUNTY
Transportation District #9
Prepared by the Vermont Agency of Transportation
Division of Policy, Planning & Intermodal Development
in cooperation with
U.S. Department of Transportation
Federal Highway Administration
Mileage as of February 10, 2011
Map prepared October 26, 2011
SCALE 1:31,680
0.5 0 0.5 1 1.5 2 Miles
1 0 1 2 Kilometers