

MILEAGE SUMMARY

CLASS 1			
TH-1	0.950		
TH-2	0.746		
TH-3	1.126		
	TOTAL CLASS 1	2.822	
CLASS 2			
TH-2	2.470		
TH-3	0.450		
TH-4	1.410		
TH-5	5.880		
TH-6	5.200		
	TOTAL CLASS 2	15.410	
CLASS 3			
	TOTAL CLASS 3	71.510	
	TOTAL TOWN	89.742	
STATE HIGHWAY			
VT-12	2.181		
VT-15	4.367		
VT-15A	1.464		
VT-100	5.265		
	TOTAL STATE HIGHWAY	13.277	
	TOTAL STATE	13.277	

TOTAL, TRAVELED HIGHWAYS, FEB. 10, 2007: 103.019
(Excludes Class 4 and Legal Trail Mileage)

TOWN HWY. NO.	LENGTH IN MILES CLASS 3	LENGTH IN MILES CLASS 4	
6	6.900		
7	0.320		
8	3.050		
9	0.100		
10	0.450		
11	0.650		
12	0.950		
13	0.350		
14	1.410		
15	0.400		
16	1.050		
17	0.100		
18	0.820		
19	0.090		
20	1.500		
21	0.100		
22	0.470		
23	0.750		
24	3.650		
25	0.850		
26	0.030		
27	0.780		
28	0.450		
29	0.380		
30	6.250		
31	0.350		
32	0.550		
33	0.550		
34	0.100		
35	0.150		
36	0.750		
37	2.100		
38	0.100		
39	1.560		
40	1.150		
41	1.750		
42			
43	1.100		
44	0.150		
45	0.450		
46			
47			
48			
49	0.330		
50	2.900		
51			
52	1.600		
53	0.060		
54	1.560		
55	0.550		
56	0.600		
57	1.500		
58	0.350		
59	0.690		
	TOTAL	71.510	10.570

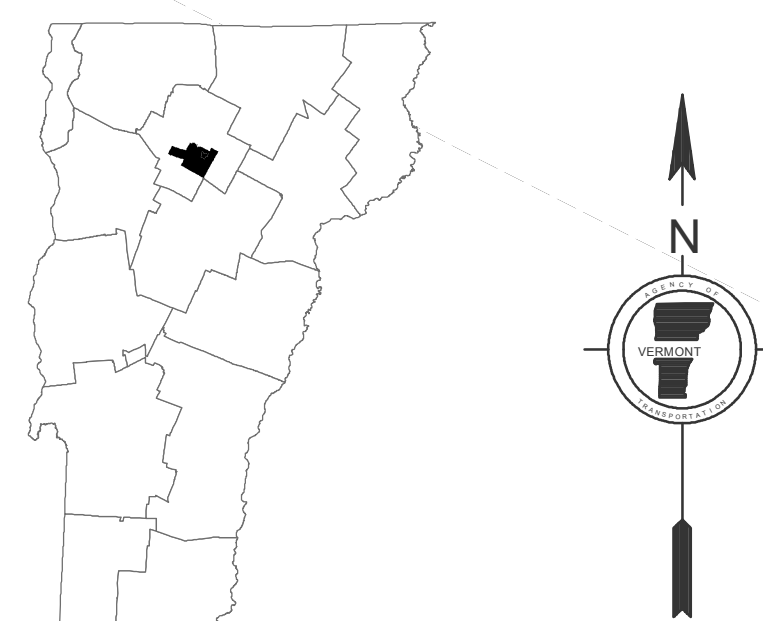
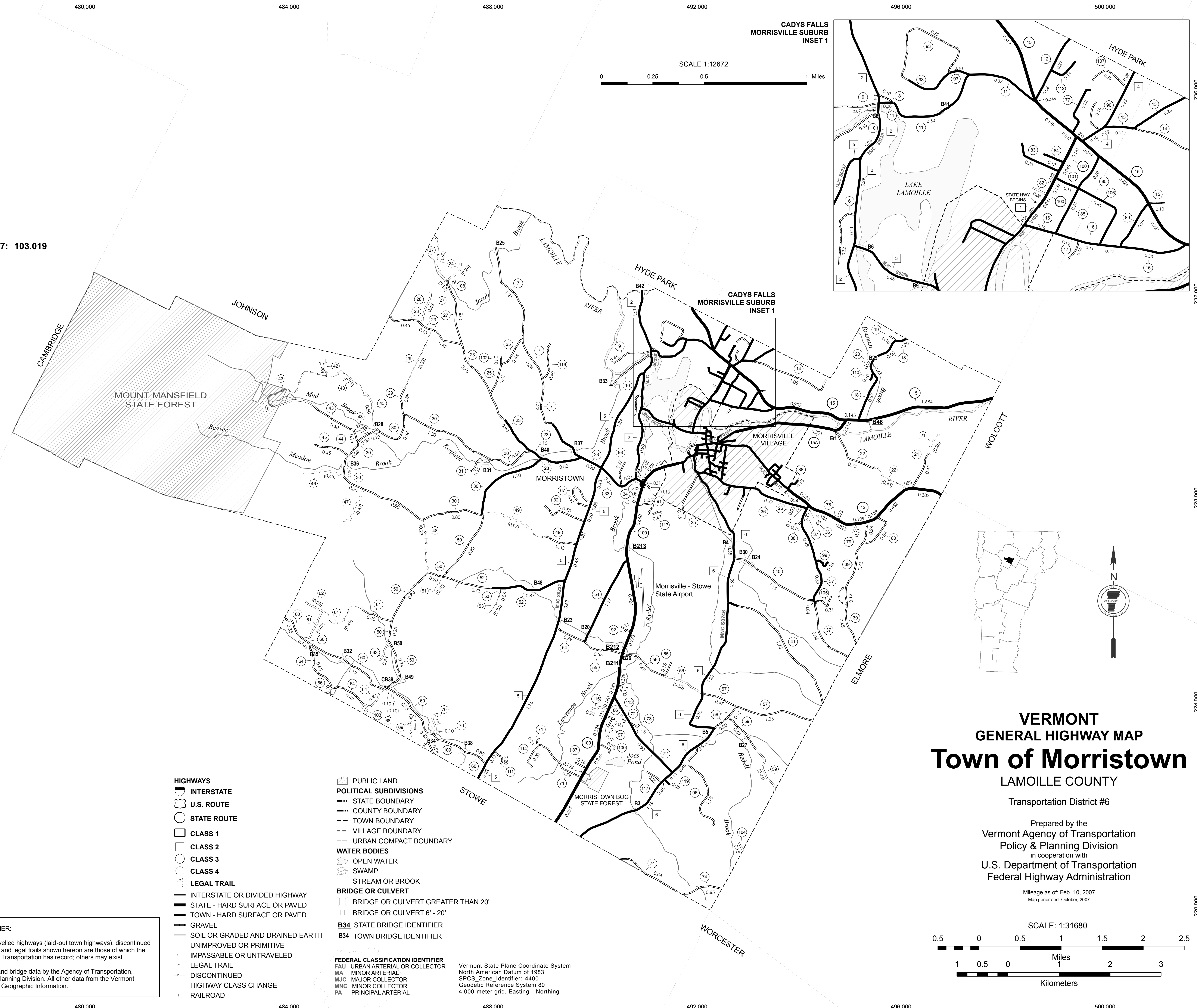
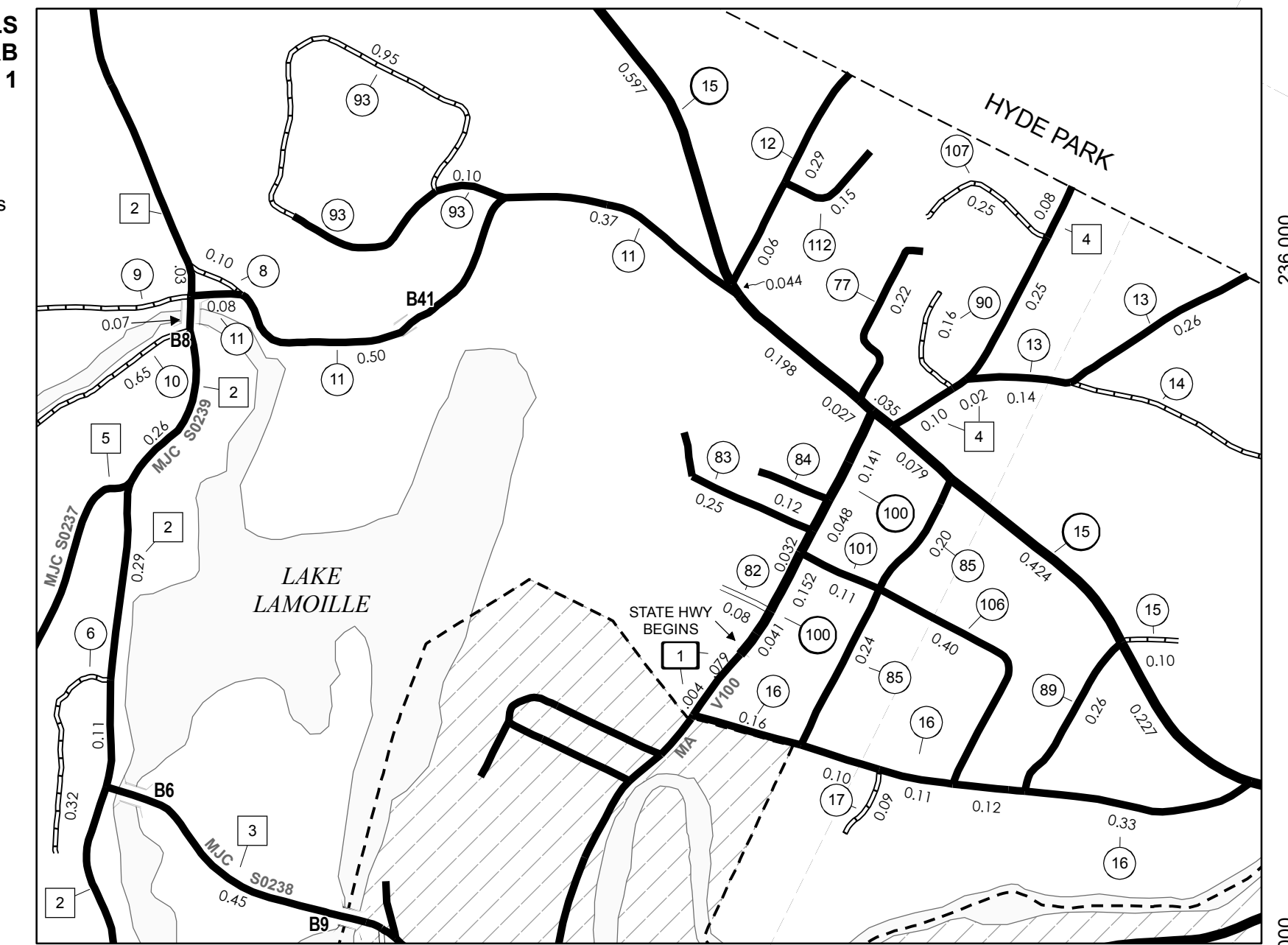
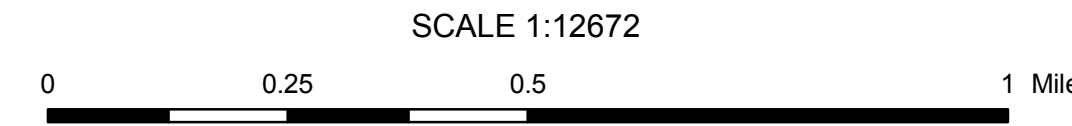
* This portion of town highway is Class 3, but is functionally Class 4

DISCLAIMER:
The untraveled highways (laid-out town highways), discontinued highways, and legal trails shown hereon are those of which the Agency of Transportation has record; others may exist.
Highway and bridge data by the Agency of Transportation, Policy & Planning Division. All other data from the Vermont Center for Geographic Information.



- HIGHWAYS**
- INTERSTATE
 - U.S. ROUTE
 - STATE ROUTE
 - CLASS 1
 - CLASS 2
 - CLASS 3
 - CLASS 4
 - LEGAL TRAIL
 - INTERSTATE OR DIVIDED HIGHWAY
 - STATE - HARD SURFACE OR PAVED
 - TOWN - HARD SURFACE OR PAVED
 - GRAVEL
 - SOIL OR GRADED AND DRAINED EARTH
 - UNIMPROVED OR PRIMITIVE
 - IMPASSABLE OR UNTRAVELED
 - LEGAL TRAIL
 - DISCONTINUED
 - HIGHWAY CLASS CHANGE
 - RAILROAD
- POLITICAL SUBDIVISIONS**
- STATE BOUNDARY
 - COUNTY BOUNDARY
 - TOWN BOUNDARY
 - VILLAGE BOUNDARY
 - URBAN COMPACT BOUNDARY
- WATER BODIES**
- OPEN WATER
 - SWAMP
 - STREAM OR BROOK
- BRIDGE OR CULVERT**
- BRIDGE OR CULVERT GREATER THAN 20'
 - BRIDGE OR CULVERT 6' - 20'
 - B34 STATE BRIDGE IDENTIFIER
 - B34 TOWN BRIDGE IDENTIFIER
- FEDERAL CLASSIFICATION IDENTIFIER**
- FAU URBAN ARTERIAL OR COLLECTOR
 - MA MINOR ARTERIAL
 - MJC MAJOR COLLECTOR
 - MNC MINOR COLLECTOR
 - PA PRINCIPAL ARTERIAL

Vermont State Plane Coordinate System
North American Datum of 1983
SPCS_Zone_Identifier: 4400
Geodetic Reference System 80
4,000-meter grid, Easting - Northing



VERMONT GENERAL HIGHWAY MAP
Town of Morrystown
LAMOILLE COUNTY

Transportation District #6

Prepared by the
Vermont Agency of Transportation
Policy & Planning Division
in cooperation with
U.S. Department of Transportation
Federal Highway Administration

Mileage as of: Feb. 10, 2007
Map generated: October, 2007

