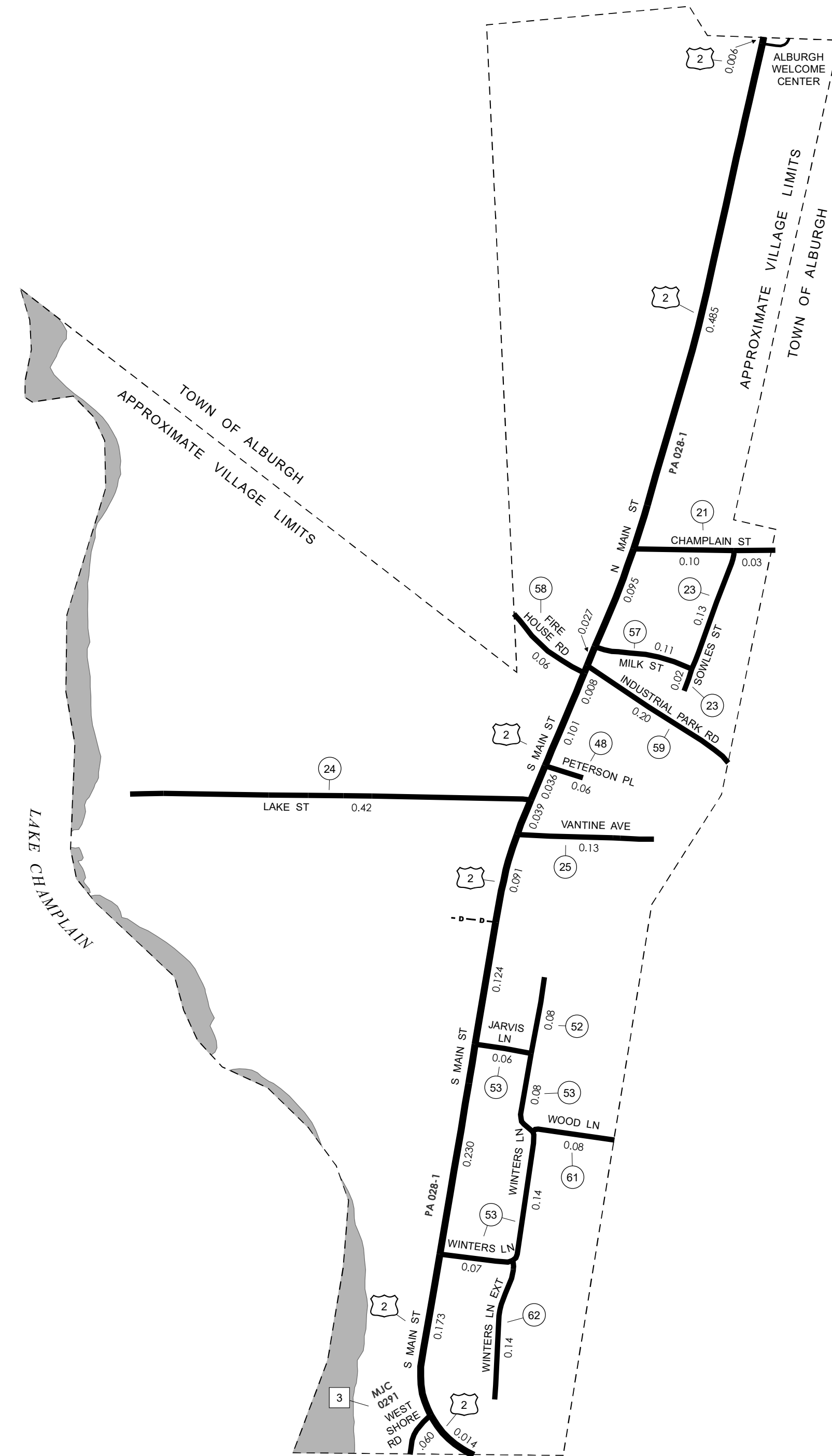


TOWN HWY. No.	LENGTH IN MILES		TOWN ROAD NAME
	CLASS 3	CLASS 4	
21	0.13		CHAMPLAIN ST
23	0.15		SOWLES ST
24	0.42		LAKE ST
25	0.13		VANTINE AVE
48	0.06		PETERSON PL
52	0.08		WINTERS LN
53	0.06		JARVIS LN
53	0.29		WINTERS LN
57	0.11		MILK ST
58	0.06		FIRE HOUSE RD
59	0.20		INDUSTRIAL PARK RD
61	0.08		WOOD LN
62	0.14		WINTERS LANE EXT
<b>TOTAL</b>	<b>1.91</b>	<b>0.00</b>	

**MILEAGE SUMMARY**

CLASS 2			
TH-3	0.060		0.060
	<b>TOTAL CLASS 2</b>		<b>0.060</b>
CLASS 3			
	<b>TOTAL CLASS 3</b>		<b>1.91</b>
		<b>TOTAL TOWN</b>	<b>1.970</b>
US HIGHWAY			
US-2	1.429		1.429
	<b>TOTAL US HIGHWAY</b>		<b>1.429</b>
		<b>TOTAL STATE</b>	<b>1.429</b>
<b>TOTAL, TRAVELED HIGHWAYS, FEB. 10, 2024:</b>			<b>3.399</b>

(Excludes Class 4 and Legal Trail Mileage)

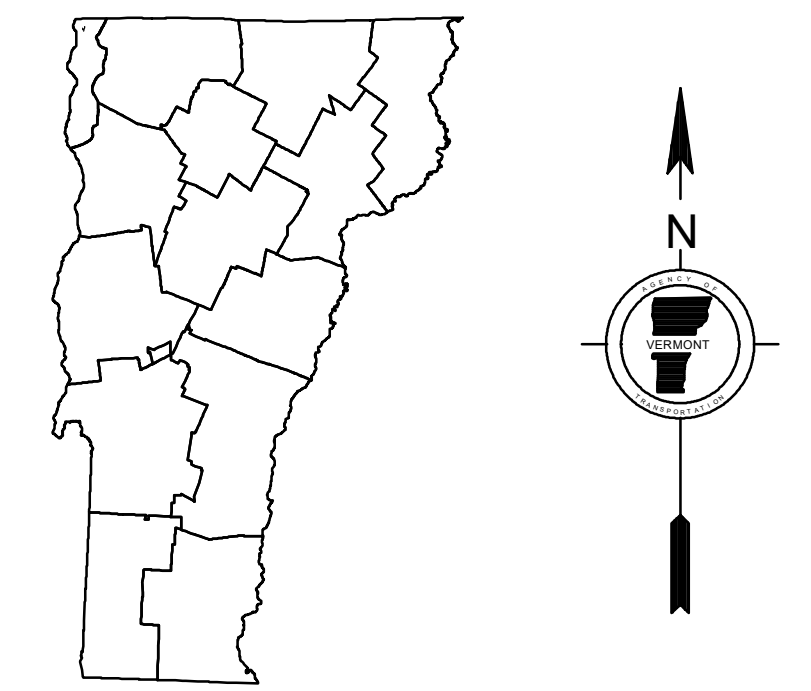


- HIGHWAYS**
- INTERSTATE
  - U.S. ROUTE
  - STATE ROUTE
  - CLASS 1
  - CLASS 2
  - CLASS 3
  - CLASS 4
  - LEGAL TRAIL
  - PARK AND RIDE
  - INTERSTATE OR DIVIDED HIGHWAY
  - STATE - HARD SURFACE OR PAVED
  - TOWN - HARD SURFACE OR PAVED
  - GRAVEL
  - SOIL OR GRADED AND DRAINED EARTH
  - UNIMPROVED OR PRIMITIVE
  - IMPASSABLE OR UNTRAVELED
  - LEGAL TRAIL
  - DISCONTINUED
  - HIGHWAY CLASS CHANGE
  - RAILROAD
  - INACTIVE RAILROAD
  - PUBLIC LAND - NATIONAL FOREST
  - PUBLIC LAND - STATE/MUNICIPAL
  - NFR NATIONAL FOREST ROAD
  - ACE ARMY CORPS OF ENGINEERS
  - USGH UNITED STATES GOV. HWY.
- POLITICAL SUBDIVISIONS**
- STATE BOUNDARY
  - COUNTY BOUNDARY
  - TOWN BOUNDARY
  - VILLAGE BOUNDARY
  - URBAN COMPACT BOUNDARY
  - WATER BODY
  - STREAM OR BROOK
- BRIDGE OR CULVERT**
- BRIDGE OR CULVERT > 20'
  - BRIDGE OR CULVERT 6' - 20'
  - BIKE PATH STRUCTURE
  - VT CULVERTS BRIDGE
  - VT CULVERTS CULVERT > 6'
- FEDERAL CLASSIFICATION IDENTIFIER**
- MA MINOR ARTERIAL
  - MJC MAJOR COLLECTOR
  - MNC MINOR COLLECTOR
  - PA PRINCIPAL ARTERIAL
- B34 / C34 STATE BRIDGE OR CULVERT IDENTIFIER**
- B34 / C34 TOWN BRIDGE OR CULVERT IDENTIFIER**

**DISCLAIMER:**  
The untraveled highways (laid-out town highways), discontinued highways, and legal trails hereon are those of which the Agency of Transportation has record; others may exist.

Highway and bridge data by the Agency of Transportation. Town short structures drawn from the VTCULVERTS (formerly VOBCT) online database. All other data from the Vermont Open Geodata Portal. Only named streams shown.

Vermont State Plane Coordinate System  
North American Datum of 1983  
SPCS\_Zone\_Identifier: 4400  
Geodetic Reference System 80  
2,000-meter grid, Easting - Northing



**VERMONT**  
**GENERAL HIGHWAY MAP**  
**Village of Alburgh**

GRAND ISLE COUNTY

Transportation District #8

Prepared by the  
Vermont Agency of Transportation  
Division of Policy, Planning and Intermodal Development  
in cooperation with  
U.S. Department of Transportation  
Federal Highway Administration

Mileage as of February 10, 2024  
Map prepared August 06, 2024

SCALE 1:6,336

