

456,000 460,000 464,000 468,000 472,000 476,000

TOWN HWY. NO.	LENGTH IN MILES CLASS 3	CLASS 4
8	1.10	
9	2.10	
10	1.05	
11	1.85	
12	0.30	
13	0.50	
14	0.30	
15	0.77	
16	5.65	(1.15)
17	0.90	(0.40)
18		
19	0.40	
20	0.10	
21	0.40	(0.13)
22	1.10	
23	0.20	
24	0.89	
26		(0.45)
28	2.10	
29	1.10	
30	0.15	
32		(0.19)
33	1.74	
34	0.30	
35	0.60	
36	1.38	
38	0.25	
39	0.32	
40	0.30	
41	0.13	(0.14)
43	0.42	
44	0.39	
45	0.15	
46	0.07	
47	0.23	
48	0.20	
49	0.24	
50	0.29	
51	0.88	
52	0.12	
53	0.10	
TOTAL	29.07	2.46

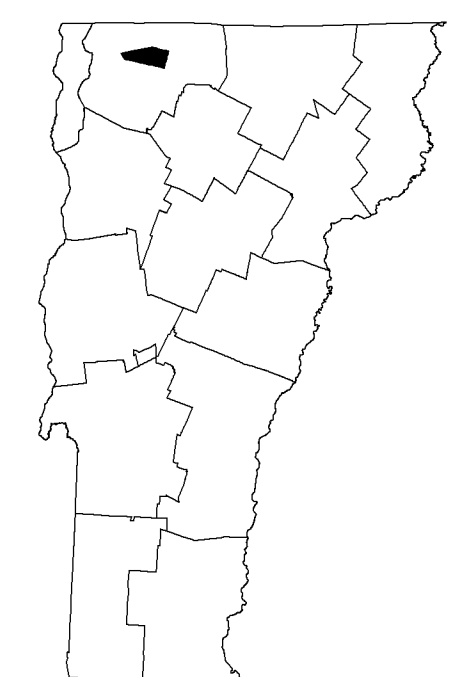
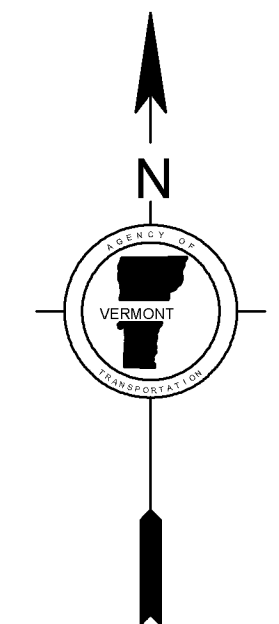
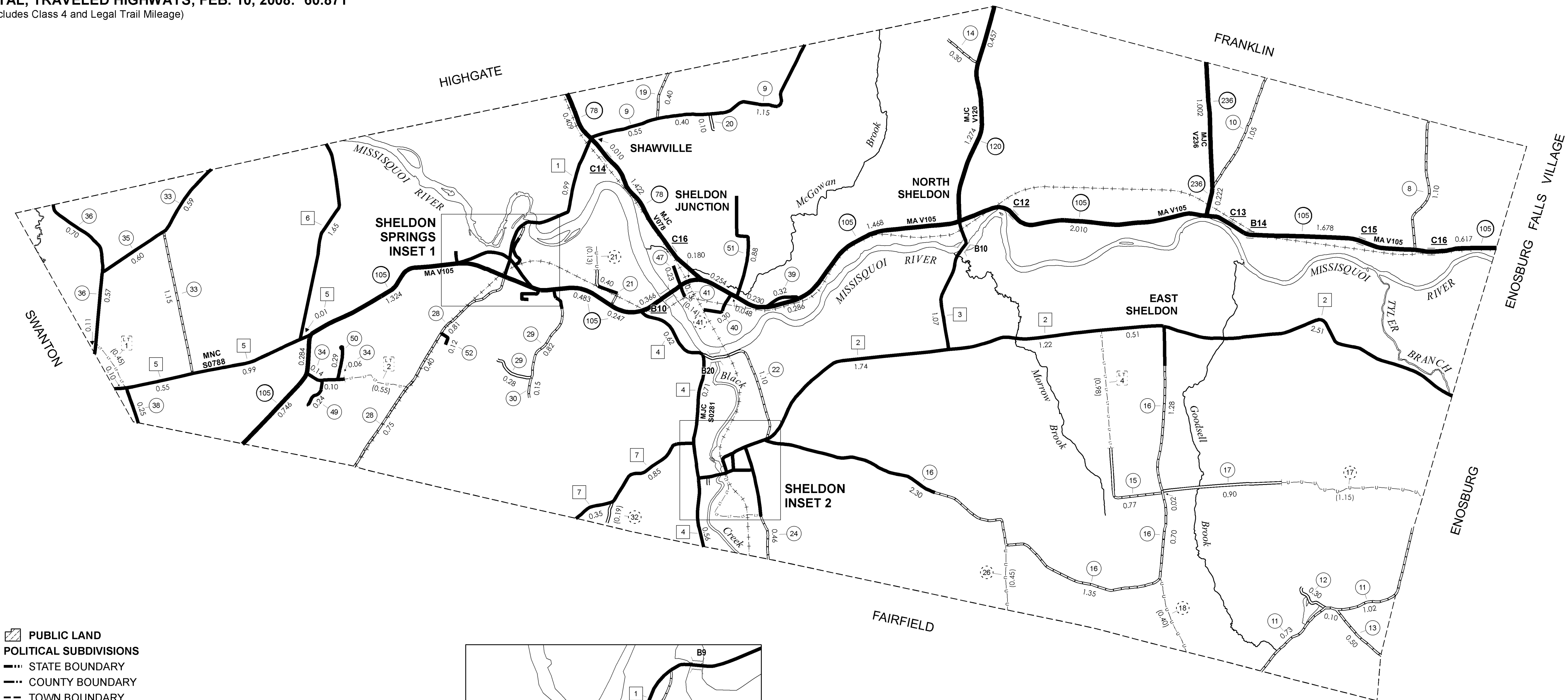
MILEAGE SUMMARY

CLASS	TH-1	TH-2	TH-3	TH-4	TH-5	TH-6	TH-7	TOTAL CLASS 2
CLASS 2	1.580	6.680	1.070	2.160	1.650	1.650	1.200	15.990
CLASS 3								
STATE HIGHWAY	VT-78	1.841	VT-105	11.015	VT-120	1.731	VT-236	1.224
	TOTAL CLASS 3							29.070
	TOTAL TOWN							45.060
	TOTAL STATE HIGHWAY							15.811
	TOTAL STATE							15.811

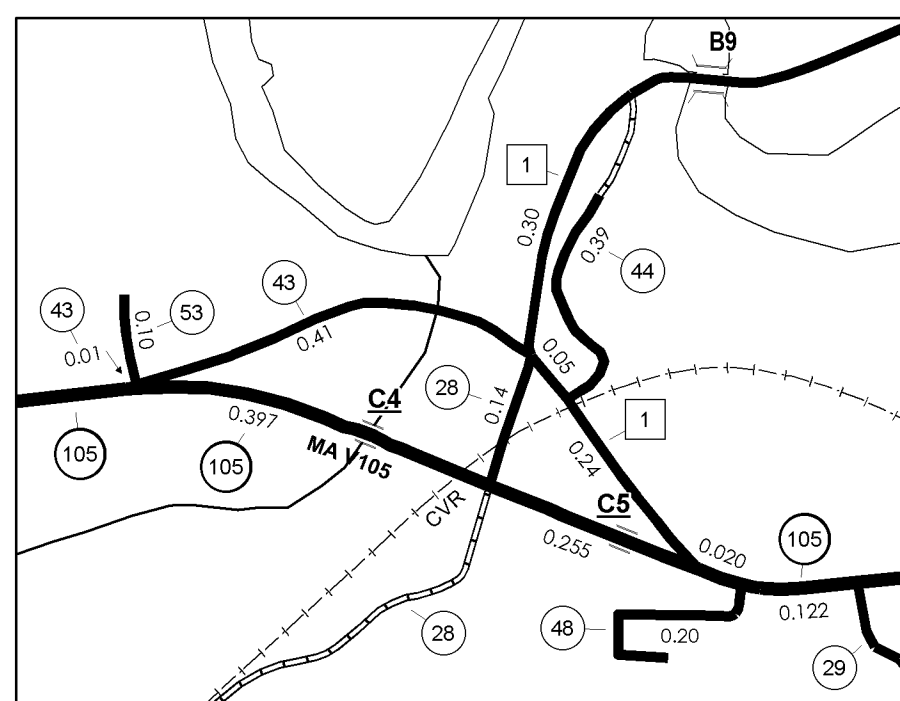
TOTAL, TRAVELED HIGHWAYS, FEB. 10, 2008: 60.871
(Excludes Class 4 and Legal Trail Mileage)

LEGAL TRAIL

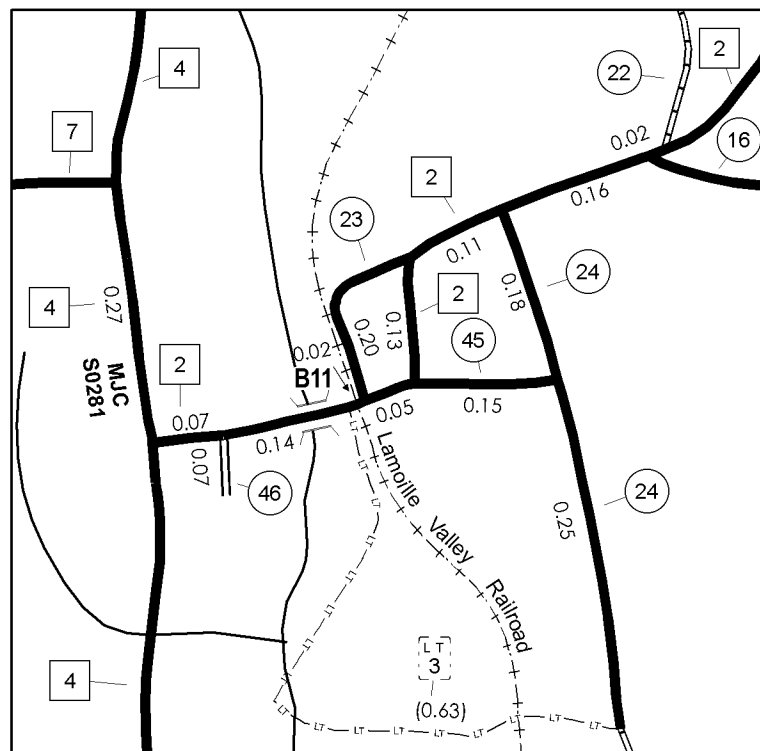
TRAIL NO.	LENGTH IN MILES
1	(0.45)
2	(0.55)
3	(0.63)
4	(0.98)
TOTAL	2.61



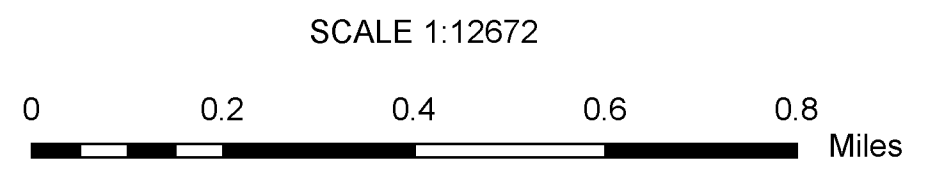
- HIGHWAYS**
 - INTERSTATE
 - U.S. ROUTE
 - STATE ROUTE
 - CLASS 1
 - CLASS 2
 - CLASS 3
 - CLASS 4
 - LEGAL TRAIL
 - INTERSTATE OR DIVIDED HIGHWAY
 - STATE - HARD SURFACE OR PAVED
 - TOWN - HARD SURFACE OR PAVED
 - GRAVEL
 - SOIL OR GRADED AND DRAINED EARTH
 - UNIMPROVED OR PRIMITIVE
 - IMPASSABLE OR UNTRAVELED
 - LEGAL TRAIL
 - DISCONTINUED
 - HIGHWAY CLASS CHANGE
 - RAILROAD
 - INACTIVE RAILROAD
- PUBLIC LAND POLITICAL SUBDIVISIONS**
 - STATE BOUNDARY
 - COUNTY BOUNDARY
 - TOWN BOUNDARY
 - VILLAGE BOUNDARY
 - URBAN COMPACT BOUNDARY
 - OPEN WATER
 - STREAM OR BROOK
 - BRIDGE OR CULVERT
 - BRIDGE OR CULVERT GREATER THAN 20'
 - BRIDGE OR CULVERT 6' -20'
 - B34 / C34 STATE BRIDGE OR CULVERT IDENTIFIER
 - B34 / C34 TOWN BRIDGE OR CULVERT IDENTIFIER
- FEDERAL CLASSIFICATION IDENTIFIER**
 - FAU URBAN ARTERIAL OR COLLECTOR
 - MA MINOR ARTERIAL
 - MJC MAJOR COLLECTOR
 - MNC MINOR COLLECTOR
 - PA PRINCIPAL ARTERIAL



SHELDON SPRINGS INSET 1



SHELDON INSET 2

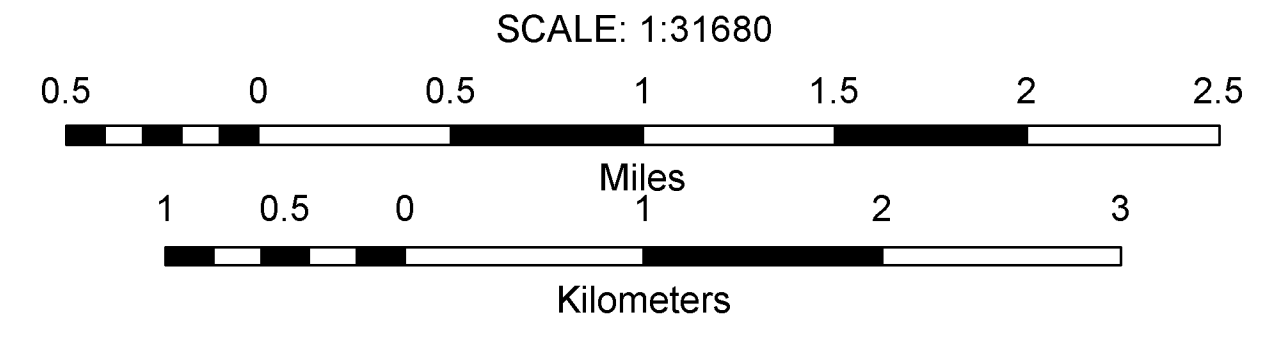


SCALE FOR INSETS (unless otherwise noted)

DISCLAIMER:
The untraveled highways (laid-out town highways), discontinued highways, and legal trails shown hereon are those of which the Agency of Transportation has record; others may exist.
Highway and bridge data by the Agency of Transportation, Policy & Planning Division. All other data from the Vermont Center for Geographic Information.

STRUCTURES - SURFACE WATER NOTE:
Town short structures (bridges or culverts from 6-feet to less than 20-feet) were not represented due to inconsistencies in the data.
The surface waters are from the Vermont Hydrological Dataset (VHD). Only the named streams are shown.

Vermont State Plane Coordinate System
North American Datum of 1983
SPCS Zone Identifier: 4400
Geodetic Reference System 80
4,000-meter grid, Easting - Northing



VERMONT GENERAL HIGHWAY MAP
Town of Sheldon
FRANKLIN COUNTY

Transportation District #8
Prepared by the
Vermont Agency of Transportation
Policy & Planning Division
in cooperation with
U.S. Department of Transportation
Federal Highway Administration

Mileage as of: Feb. 10, 2008
Map generated: September, 2008

