

TOWN HWY. NO.	LENGTH IN MILES CLASS 3	LENGTH IN MILES CLASS 4		
5	1.260	39	0.170	
6	5.630	40	0.130	
7	0.140	41	0.030	
8	0.750	43	1.420	
10	1.800	45		(0.460)
11	0.130	46	0.680	
12		48	0.720	(1.700)
13	1.300	49	0.270	
14	2.000	52	0.080	
15	0.620	53	0.300	(0.820)
17	1.900	54	0.670	
18	0.700	55	0.300	
19		56	0.350	(0.780)
20	1.920	57	0.310	(1.360)
21	1.550	58	0.350	
22		59	0.700	(0.150)
23	0.120	60	0.450	
24	0.830	61	0.200	(1.030)
25	0.600	62	0.030	(0.200)
26	0.240	63	0.150	
27	1.400	64	0.150	
28	1.200	65	0.400	
29	1.200	66	0.170	
30		67	0.400	(0.600)
31	2.910	68	0.150	
32	0.100	69	0.480	
33	1.350	70	0.100	
34	0.350	71	1.210	
35	0.670	72	0.150	
36	1.650	73	0.060	(0.620)
37	0.160	74	0.090	
TOTAL	43.150	7.720	2.590	

LEGAL TRAIL NO.	LENGTH IN MILES
1	(0.800)
3	(0.400)
4	(0.500)
5	(0.400)
6	(0.490)
TOTAL	2.590

MILEAGE SUMMARY

CLASS 2		
TH-1	0.800	
TH-2	2.600	
TH-3	6.100	
TH-4	3.830	
TH-5	4.300	
TH-6	1.900	
TOTAL CLASS 2	19.530	
CLASS 3		
TOTAL CLASS 3	43.150	
TOTAL TOWN	62.680	
STATE HIGHWAY		
VT-104	0.130	
VT-104A	3.362	
TOTAL STATE HIGHWAY	3.492	
US HIGHWAY		
US-7	7.600	
TOTAL US HIGHWAY	7.600	
TOTAL STATE	11.092	
INTERSTATE		
I-89	5.804	
TOTAL INTERSTATE	5.804	
INTERSTATE - Ramp		
I-89	0.726	
TOTAL INTERSTATE - Ramp	0.726	
TOTAL INTERSTATE	6.530	

TOTAL, TRAVELED HIGHWAYS, FEB. 10, 2007: 80.302
(Excludes Class 4 and Legal Trail Mileage)

HIGHWAYS

- INTERSTATE
- U.S. ROUTE
- STATE ROUTE
- CLASS 1
- CLASS 2
- CLASS 3
- CLASS 4
- LEGAL TRAIL
- INTERSTATE OR DIVIDED HIGHWAY
- STATE - HARD SURFACE OR PAVED
- TOWN - HARD SURFACE OR PAVED
- GRAVEL
- SOIL OR GRADED AND DRAINED EARTH
- UNIMPROVED OR PRIMITIVE
- IMPASSABLE OR UNTRAVELED
- LEGAL TRAIL
- DISCONTINUED
- HIGHWAY CLASS CHANGE
- RAILROAD

FEDERAL CLASSIFICATION IDENTIFIER

- FAU URBAN ARTERIAL OR COLLECTOR
- MA MINOR ARTERIAL
- MJC MAJOR COLLECTOR
- MNC MINOR COLLECTOR
- PA PRINCIPAL ARTERIAL

PUBLIC LAND

POLITICAL SUBDIVISIONS

- STATE BOUNDARY
- COUNTY BOUNDARY
- TOWN BOUNDARY
- VILLAGE BOUNDARY
- URBAN COMPACT BOUNDARY

WATER BODIES

- OPEN WATER
- SWAMP
- STREAM OR BROOK

BRIDGE OR CULVERT

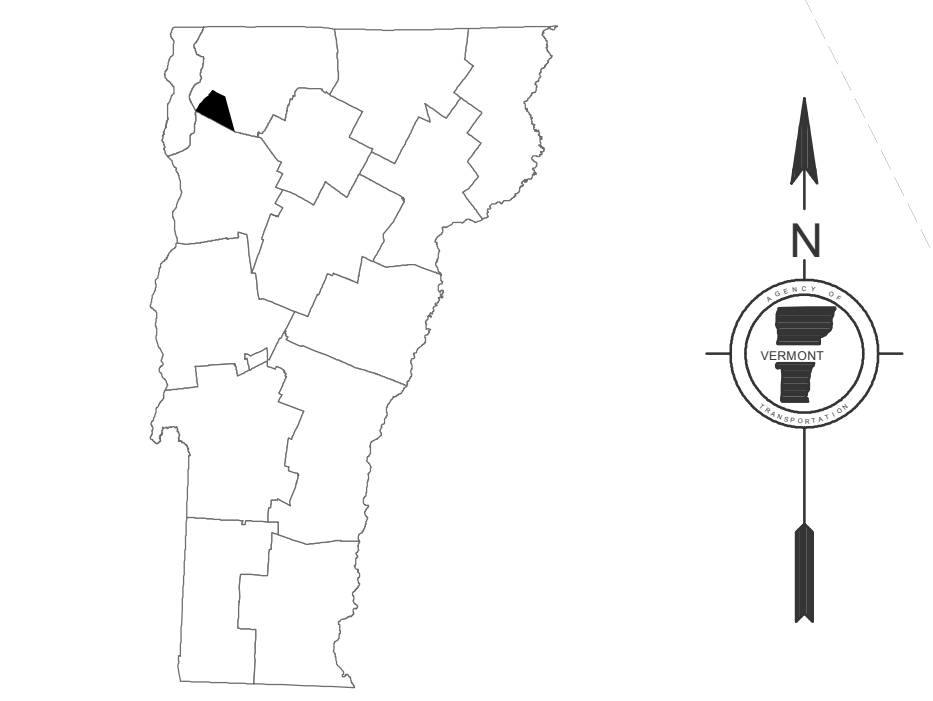
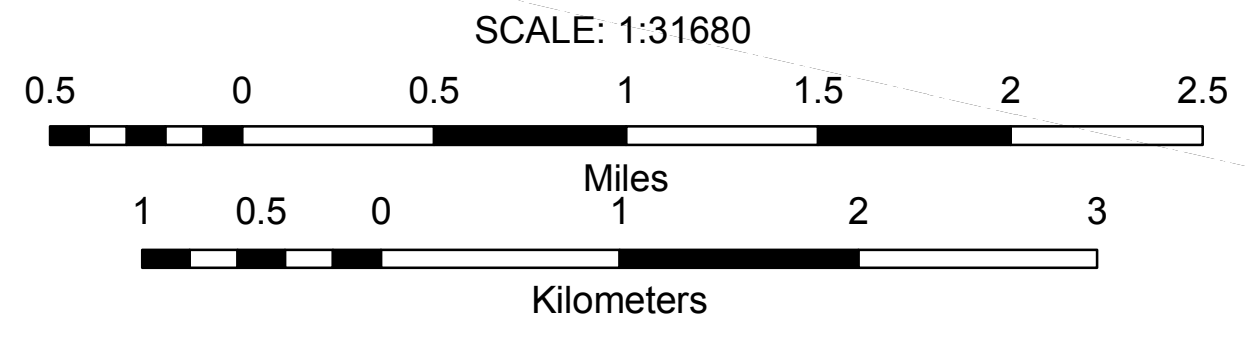
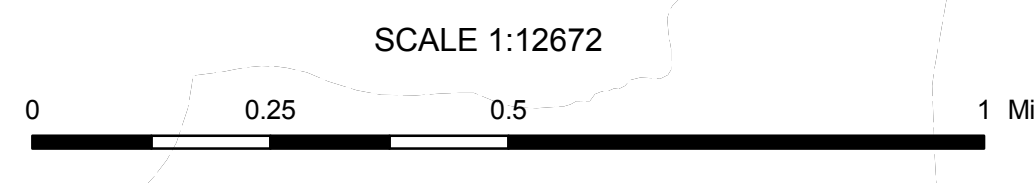
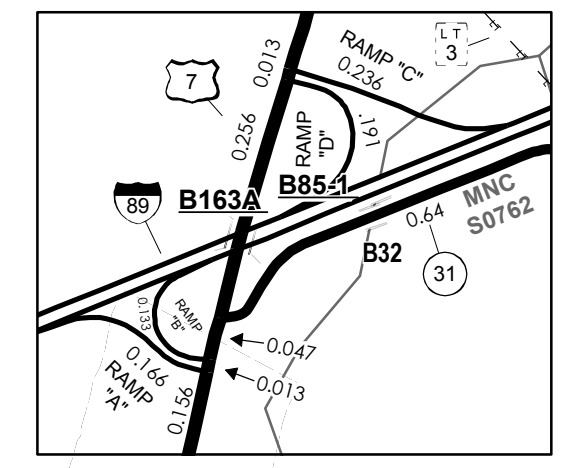
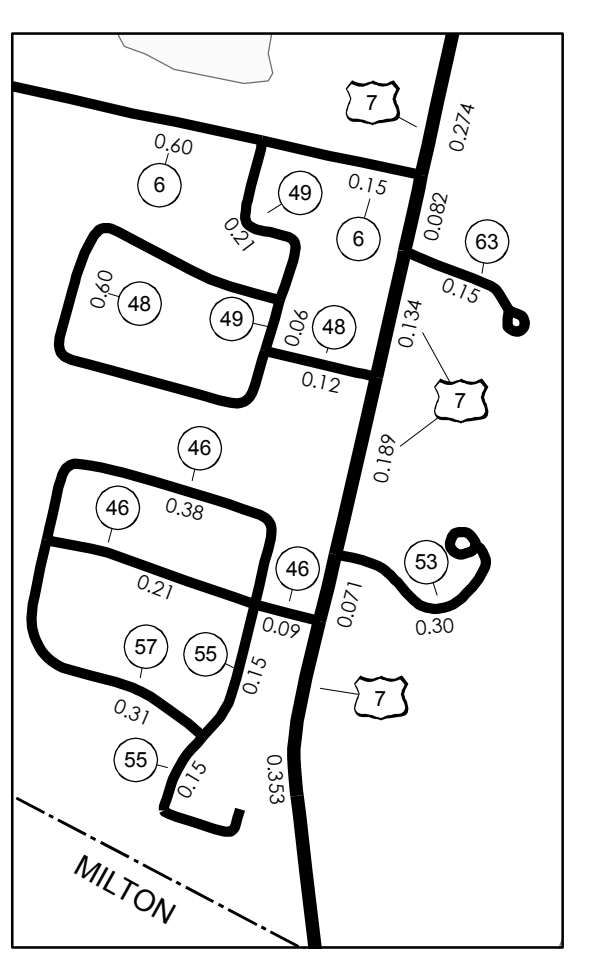
- BRIDGE OR CULVERT GREATER THAN 20'
- BRIDGE OR CULVERT 6' - 20'

B34 STATE BRIDGE IDENTIFIER

B34 TOWN BRIDGE IDENTIFIER

DISCLAIMER:
The untraveled highways (laid-out town highways), discontinued highways, and legal trails shown hereon are those of which the Agency of Transportation has record; others may exist.
Highway and bridge data by the Agency of Transportation, Policy & Planning Division. All other data from the Vermont Center for Geographic Information.

Vermont State Plane Coordinate System
North American Datum of 1983
SPCS_Zone_Identifier: 4400
Geodetic Reference System 80
4,000-meter grid, Easting - Northing



VERMONT GENERAL HIGHWAY MAP
Town of Georgia
FRANKLIN COUNTY

Transportation District #8

Prepared by the
Vermont Agency of Transportation
Policy & Planning Division
in cooperation with
U.S. Department of Transportation
Federal Highway Administration

Mileage as of: Feb. 10, 2007
Map generated: October, 2007