

TOWN HWY. NO.	LENGTH IN MILES CLASS 3	LENGTH IN MILES CLASS 4	LEGAL TRAIL NO.	LENGTH IN MILES
4	3.690	(0.070)	62	0.660
6	1.200		63	0.100
7	0.470		64	0.080
8	0.630		65	0.300
10	1.910	(0.420)	66	0.140
10		(0.290)	67	0.620
11	0.670		68	0.360
12	1.710		69	0.160
13	0.240		70	0.210
14	2.700		71	0.280
15	0.130		72	0.330
16	0.650		73	0.280
17	0.700		74	0.060
18	0.650		75	0.380
19	0.190		76	1.010
20	0.300		77	0.450
21	1.400		78	0.390
22	0.270	(0.530)	79	0.180
23	0.900		80	0.520
24	0.650	(0.100)	81	0.140
25	0.530		82	0.430
25		(0.070)	83	0.310
26	2.100		84	0.710
27		(0.550)	85	0.290
28	0.250		86	0.130
29	0.450		87	0.670
30	0.040		88	0.320
31	0.200		89	0.170
32	0.150		90	0.140
33	0.130		91	0.050
34	0.360		92	0.610
35	0.070		93	0.360
36	0.430		94	0.820
37	0.450		95	0.160
38	0.360		96	0.130
39	0.250		97	0.370
40	0.220		98	0.360
41	0.340		99	0.130
42	0.100		100	0.140
43	0.150		101	0.300
44	0.300		102	0.160
45	0.290		103	0.120
46	0.220		104	0.270
47	0.380		105	0.300
48	0.180		106	0.300
49	0.240		107	0.620
50	0.180		108	0.580
51	0.110		109	0.440
52	0.370		110	0.210
53	0.180		111	0.210
54	0.280		112	1.020
55	0.300		113	0.470
56	0.180		114	0.770
57	0.460		115	0.790
58	0.510		116	0.190
59	0.100		117	0.390
60		(0.390)		
61	0.120			
<b>TOTAL</b>	<b>50.110</b>	<b>2.420</b>		

\* This portion of town highway is Class 3, but is functionally Class 4

**MILEAGE SUMMARY**

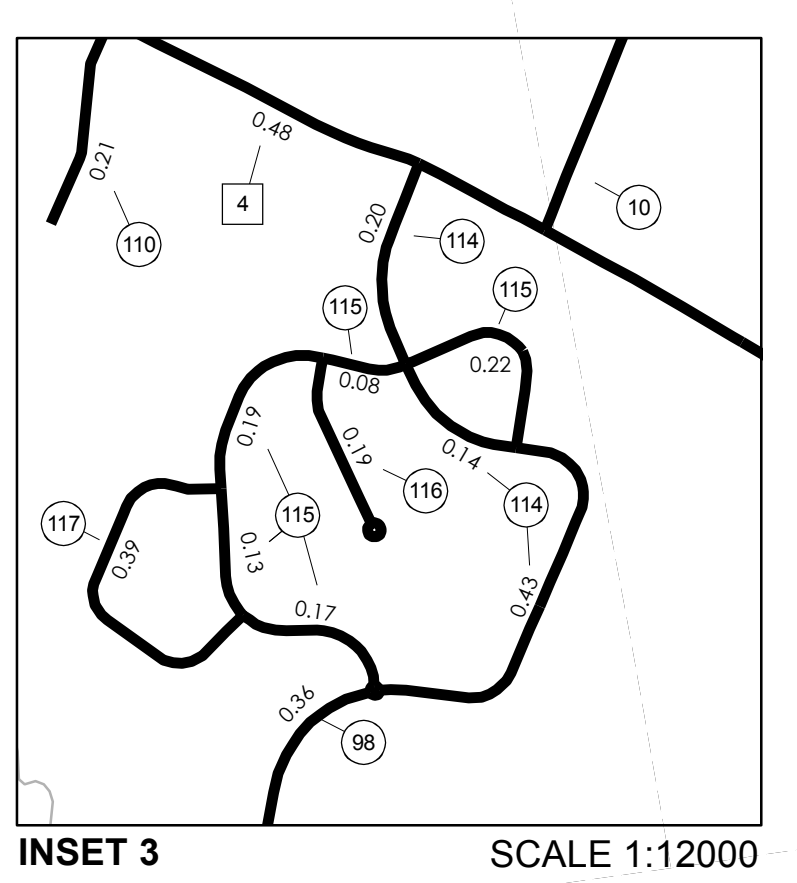
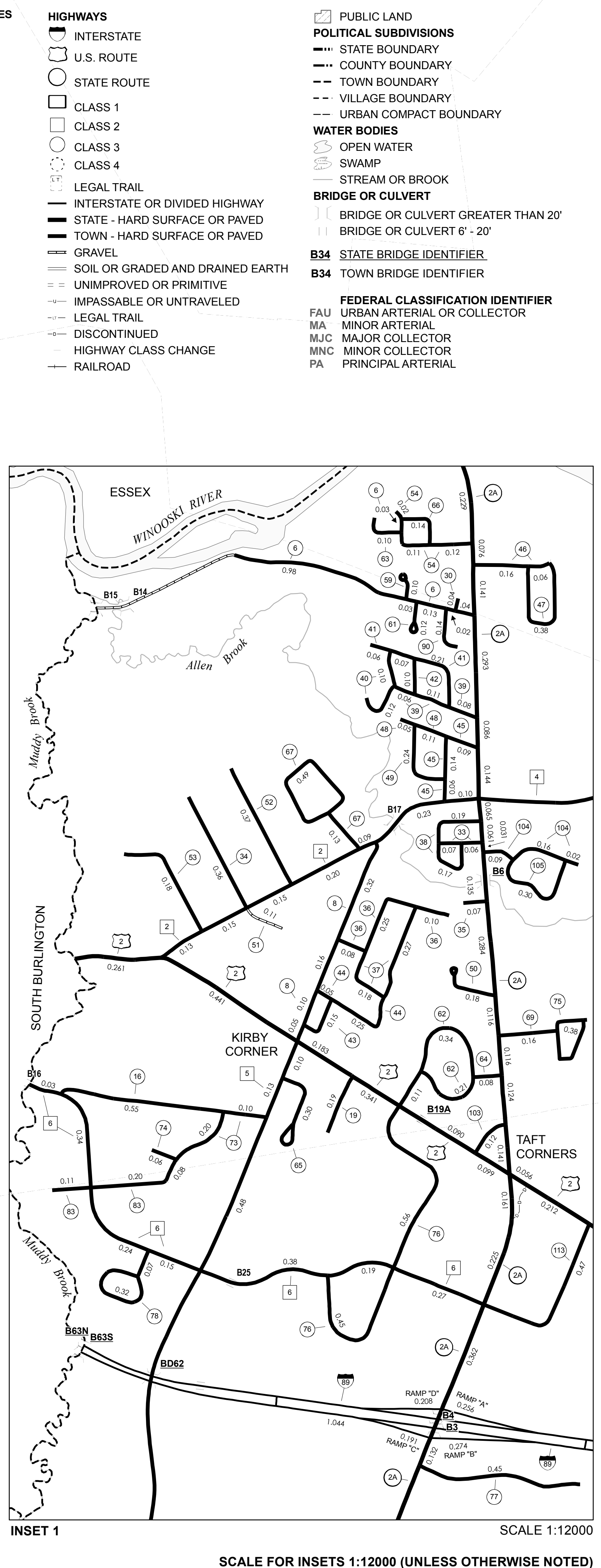
<b>CLASS 2</b>		
TH-1	7.700	
TH-2	1.050	
TH-3	2.100	
TH-4	2.950	
TH-5	3.880	
TH-6	1.600	
<b>TOTAL CLASS 2</b>	<b>19.280</b>	
<b>CLASS 3</b>		
<b>TOTAL CLASS 3</b>	<b>50.110</b>	
<b>TOTAL TOWN</b>	<b>69.390</b>	
<b>STATE HIGHWAY</b>		
VT-2A	5.940	
VT-116	0.417	
<b>TOTAL STATE HIGHWAY</b>	<b>6.357</b>	
<b>US HIGHWAY</b>		
US-2	5.897	
<b>TOTAL US HIGHWAY</b>	<b>5.897</b>	
<b>TOTAL STATE</b>	<b>12.254</b>	
<b>INTERSTATE</b>		
I-89	5.459	
<b>TOTAL INTERSTATE</b>	<b>5.459</b>	
<b>INTERSTATE - Ramp</b>		
I-89	0.929	
<b>TOTAL INTERSTATE - Ramp</b>	<b>0.929</b>	
<b>TOTAL INTERSTATE</b>	<b>6.388</b>	

**TOTAL, TRAVELED HIGHWAYS, FEB. 10, 2007: 88.032**  
(Excludes Class 4 and Legal Trail Mileage)

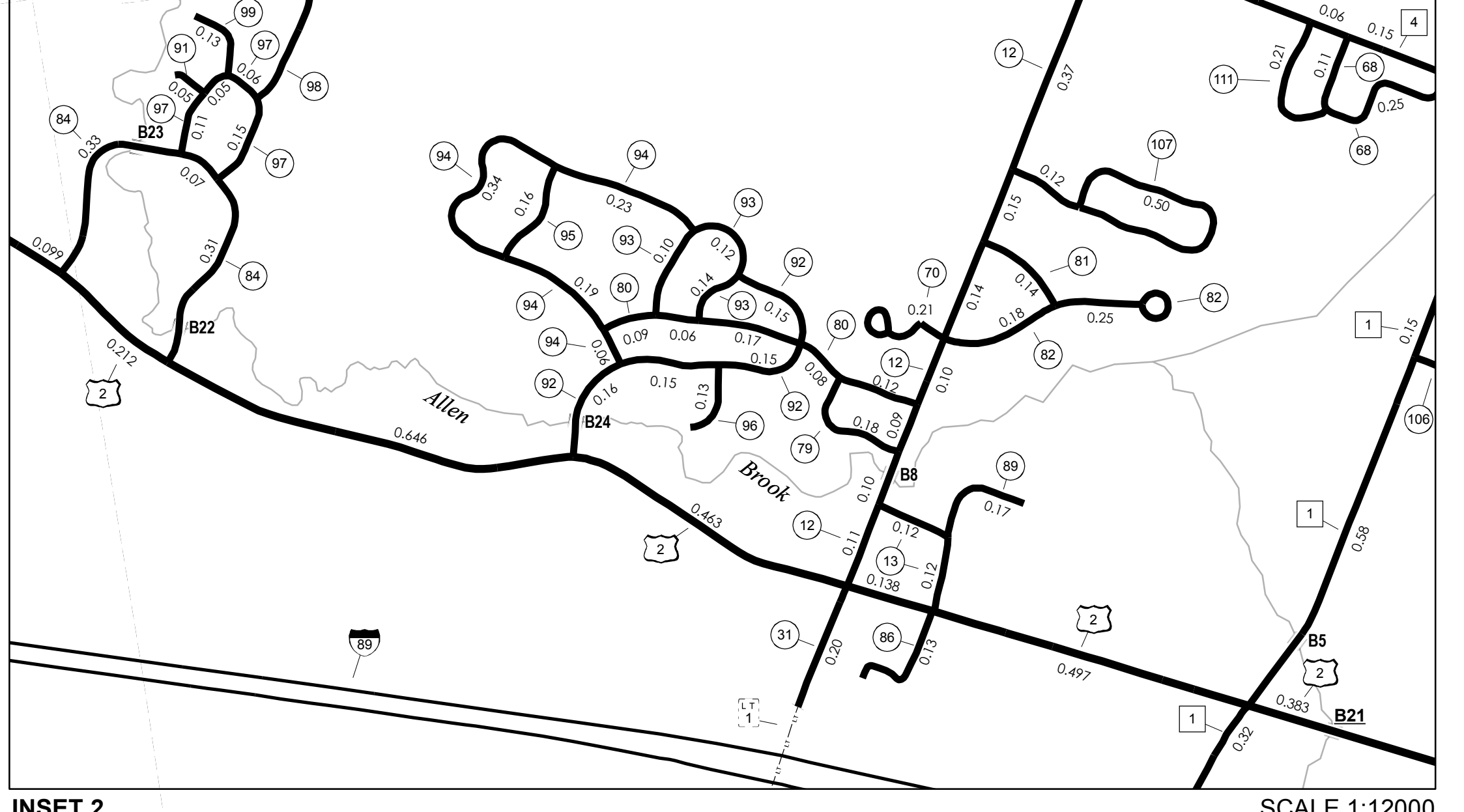
**DISCLAIMER:**  
The untraveled highways (laid-out town highways), discontinued highways, and legal trails shown hereon are those of which the Agency of Transportation has record; others may exist.  
Highway and bridge data by the Agency of Transportation, Policy & Planning Division. All other data from the Vermont Center for Geographic Information.



Vermont State Plane Coordinate System  
North American Datum of 1983  
SPCS\_Zone\_Identifier: 4400  
Geodetic Reference System 80  
4,000-meter grid, Easting - Northing



INSET 3 SCALE 1:12000



INSET 2 SCALE 1:12000

SCALE FOR INSETS 1:12000 (UNLESS OTHERWISE NOTED)



SCALE FOR INSETS 1:12000

**VERMONT GENERAL HIGHWAY MAP**  
**Town of Williston**  
CHITTENDEN COUNTY

Transportation District #5  
Prepared by the Vermont Agency of Transportation Policy & Planning Division in cooperation with U.S. Department of Transportation Federal Highway Administration  
Mileage as of: Feb. 10, 2007  
Map generated: October, 2007  
SCALE: 1:31680

