

TOWN HWY. No.	LENGTH IN MILES CLASS 3	LENGTH IN MILES CLASS 4	TOWN HWY. No.	LENGTH IN MILES CLASS 3	LENGTH IN MILES CLASS 4
2	2.49		34	0.06	
3	7.11	(0.15)	35	0.95	
4	6.52		36	1.35	
5	0.55		37	1.67	(1.04)
6	0.31	(0.40)	38		(0.11)
7	0.30		40	1.48	
8	0.30		41	0.09	
9	0.90		42	0.61	(0.07)
10	0.45		43	0.30	
11		(0.60)	44	0.70	
13	0.19		45	0.40	
14	0.30		46	0.01	
15	0.15	(1.10)	47	0.06	
17	0.88	(0.27)	48	0.18	
18	0.36		49	0.04	
19	0.25		50	0.01	
20	0.14		51	0.10	
21	0.95		52	0.95	
22	0.10		53	0.68	
23	0.17	(0.33)	54	0.70	
24	3.50	(0.31)	55	0.13	
25	0.24		56	0.27	
26	0.75	(1.30)	57	0.22	
27	0.82		58	0.29	
28	0.10		59	0.35	
30	1.55		60	0.15	
31	0.06		61	0.35	
32		(0.73)	62	0.44	
33	1.15		63	0.29	
TOTAL			43.42	6.41	

TOWN HWY. No.	LENGTH IN MILES "NOT UP TO STANDARD"
2	(0.33)
21	(0.04)
TOTAL	0.37

* The sections of the town highways listed above are legally Class 3, but have been deemed "Not Up To Standard" and are functionally Class 4 Town Highways

LEGAL TRAIL No.	LENGTH IN MILES LEGAL TRAIL
1	(0.55)
TOTAL	0.55

MILEAGE SUMMARY		
CLASS 2		
TH-1	8.750	
TOTAL CLASS 2		8.750
CLASS 3		
TOTAL CLASS 3		43.42
TOTAL TOWN		52.170
STATE HIGHWAY		
VT-15	4.944	
TOTAL STATE HIGHWAY		4.944
TOTAL STATE		4.944

TOTAL, TRAVELED HIGHWAYS, FEB. 10, 2015: 57.114
(Excludes Class 4, Legal Trail, and Unidentified Corridor Mileage)

- HIGHWAYS**
- INTERSTATE OR DIVIDED HIGHWAY
 - INTERSTATE
 - U.S. ROUTE
 - STATE ROUTE
 - CLASS 1
 - CLASS 2
 - CLASS 3
 - CLASS 4
 - LEGAL TRAIL
 - DISCONTINUED
 - HIGHWAY CLASS CHANGE
 - RAILROAD
 - INACTIVE RAILROAD
 - NATIONAL FOREST ROAD
 - STATE FOREST HIGHWAY
 - PARK AND RIDE

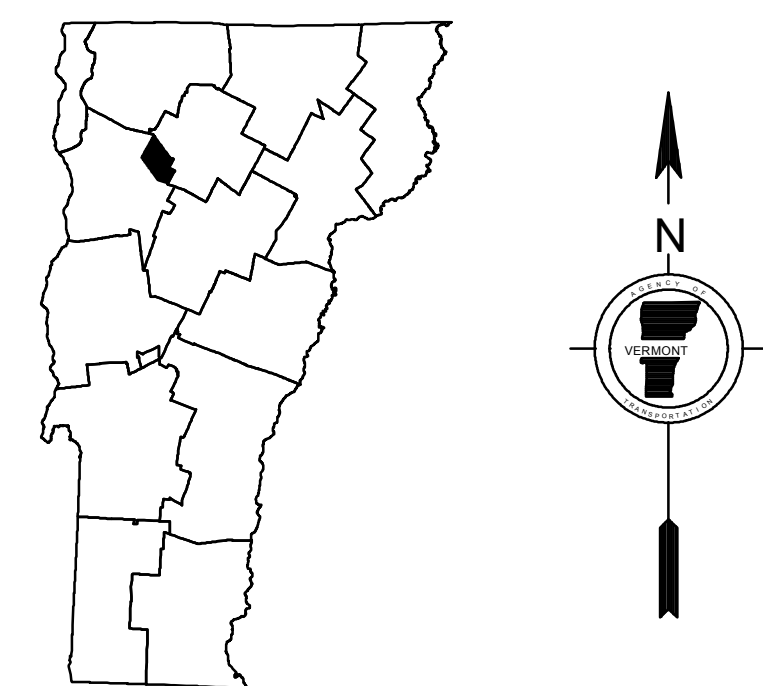
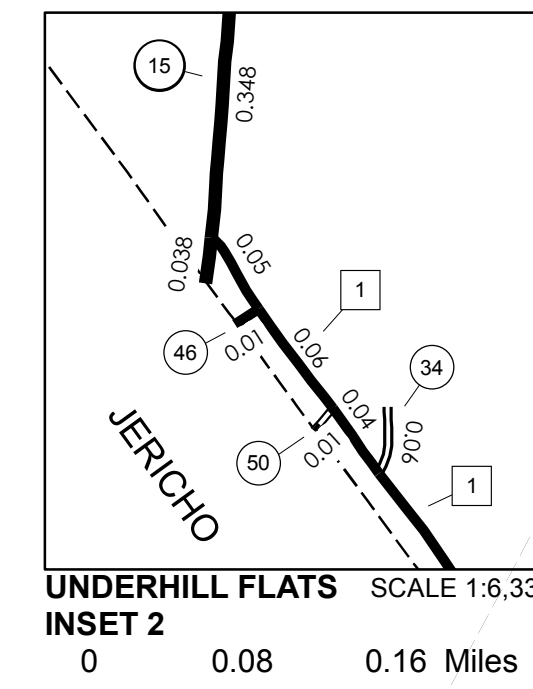
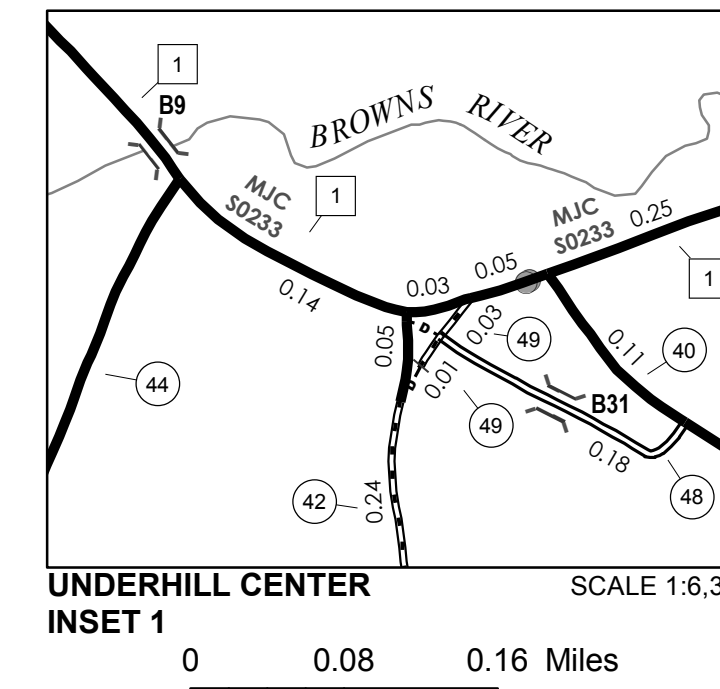
- PUBLIC LAND - GREEN MOUNTAIN NATIONAL FOREST
- PUBLIC LAND - STATE/MUNICIPAL
- POLITICAL SUBDIVISIONS**
- STATE BOUNDARY
- COUNTY BOUNDARY
- TOWN BOUNDARY
- VILLAGE BOUNDARY
- URBAN COMPACT BOUNDARY
- WATER BODY
- STREAM OR BROOK
- BRIDGE OR CULVERT**
- BRIDGE OR CULVERT > 20'
- BRIDGE OR CULVERT 6' - 20'
- VOBICIT BRIDGE
- VOBICIT CULVERT > 6'
- STATE BRIDGE OR CULVERT IDENTIFIER
- TOWN BRIDGE OR CULVERT IDENTIFIER

- FEDERAL CLASSIFICATION IDENTIFIER**
- FAU URBAN ARTERIAL OR COLLECTOR
 - MA MINOR ARTERIAL
 - MJC MAJOR COLLECTOR
 - MNC MINOR COLLECTOR
 - PA PRINCIPAL ARTERIAL

DISCLAIMER:
The untraveled highways (laid-out town highways), discontinued highways, and legal trails hereon are those of which the Agency of Transportation has record; others may exist.

Highway and bridge data by the Agency of Transportation. Town short structures are drawn from the Vermont Online Bridge & Culvert Inventory Tool (VOBCIT) database. All other data from the Vermont Center for Geographic Information. Only named streams are shown.

Vermont State Plane Coordinate System
North American Datum of 1983
SPCS_Zone_Identifier: 4400
Geodetic Reference System 80
4,000-meter grid, Easting - Northing



VERMONT GENERAL HIGHWAY MAP

Town of Underhill

CHITTENDEN COUNTY

Transportation District #5

Prepared by the
Vermont Agency of Transportation
Division of Policy, Planning and Intermodal Development
in cooperation with
U.S. Department of Transportation
Federal Highway Administration

Mileage as of February 10, 2015
Map prepared June 04, 2015

SCALE 1:31,680

