

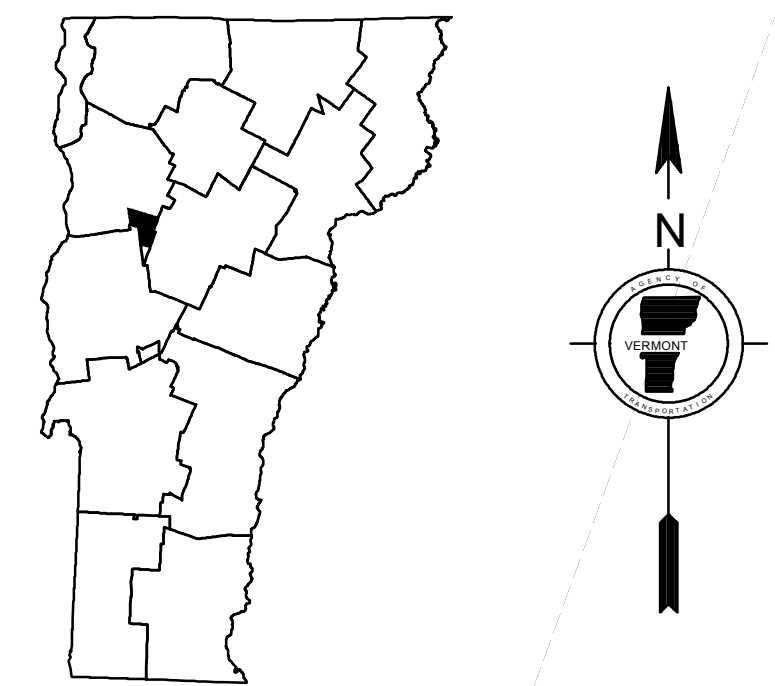
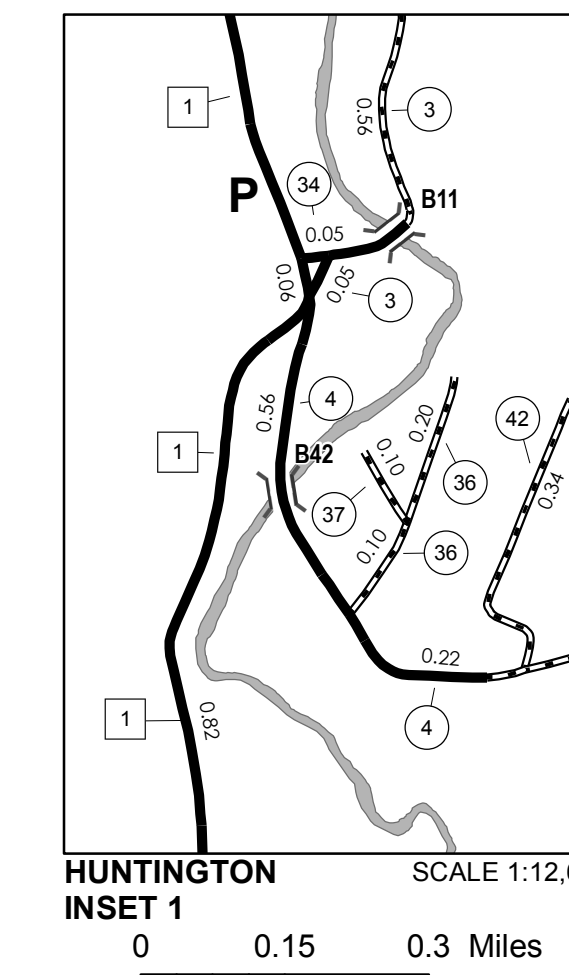
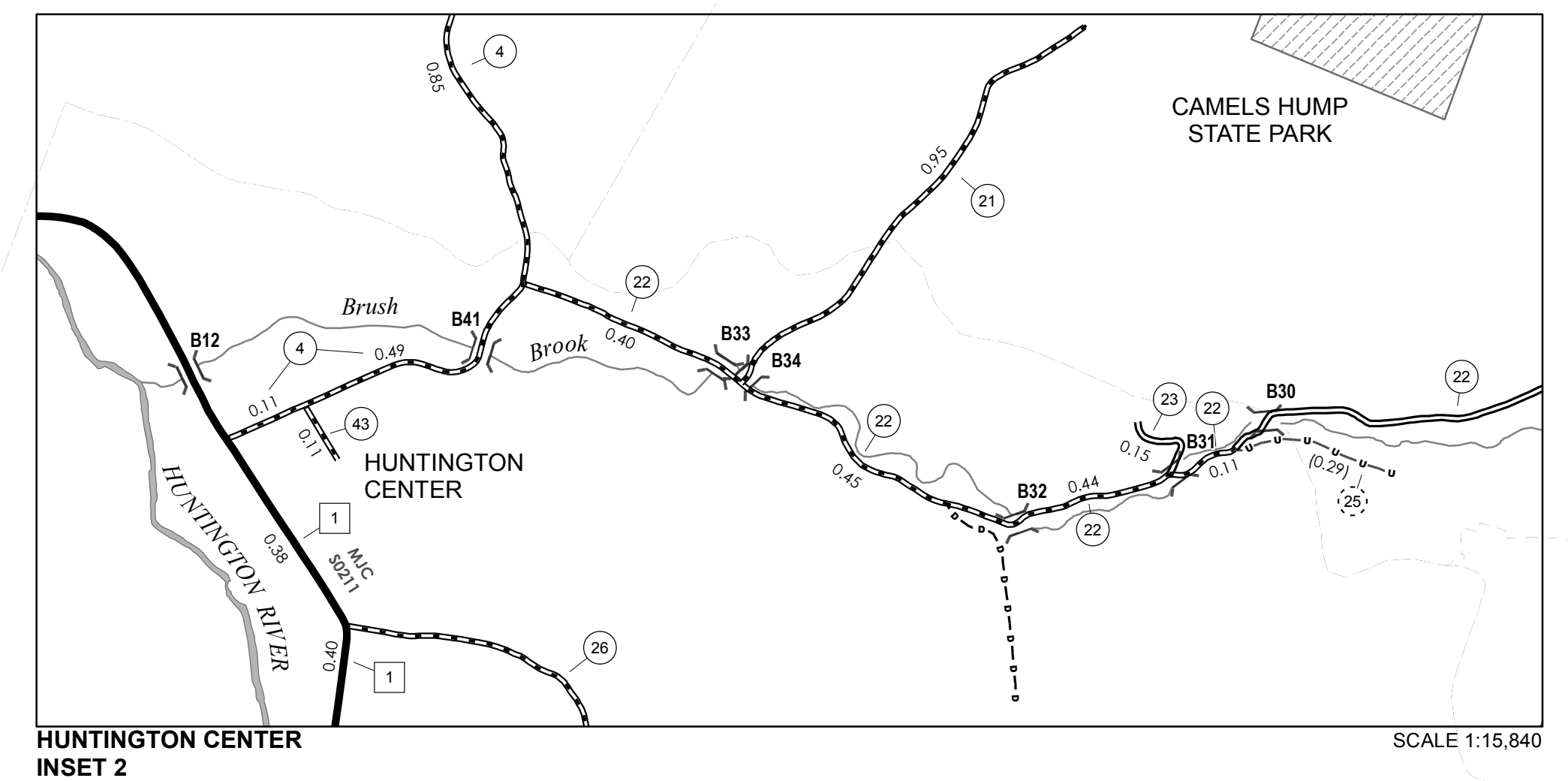
TOWN HWY. No.	LENGTH IN MILES	
	CLASS 3	CLASS 4
3	2.11	
4	3.98	
5	2.55	
6	1.40	
7	1.84	
8	0.25	
9	0.06	
10	1.62	
11	1.05	
12	1.40	
13	0.50	
14	0.55	
16	1.45	
17	0.26	
18	0.75	
19	0.15	
20	0.30	
21	0.95	
22	2.70	
23	0.15	
25		(0.29)
26	1.85	
28	0.55	
29	0.20	(1.45)
30	1.55	
31	1.40	
32	0.40	
33	1.20	
34	0.05	
36	0.30	
37	0.10	
38	0.14	
41	0.10	
42	0.34	
43	0.11	
44	0.24	
45	0.13	
<b>TOTAL</b>	<b>32.78</b>	<b>1.74</b>

TOWN HWY. No.	LENGTH IN MILES	
	"NOT UP TO STANDARD"	
15		(0.33)
<b>TOTAL</b>		<b>0.33</b>

\* The sections of the town highways listed above are legally Class 3, but have been deemed "Not Up To Standard" and are functionally Class 4 Town Highways

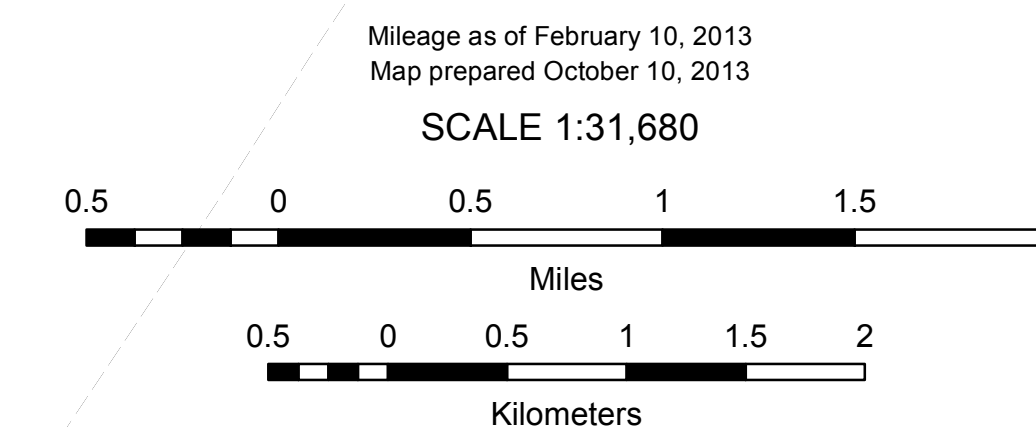
MILEAGE SUMMARY		
CLASS 2		
TH-1	9.700	
TH-2	1.480	
<b>TOTAL CLASS 2</b>	<b>11.180</b>	
CLASS 3		
<b>TOTAL CLASS 3</b>	<b>32.78</b>	
<b>TOTAL TOWN</b>	<b>43.960</b>	
<b>TOTAL STATE</b>	<b>0.000</b>	

**TOTAL, TRAVELED HIGHWAYS, FEB. 10, 2013: 43.960**  
(Excludes Class 4, Legal Trail, and Unidentified Corridor Mileage)



**VERMONT**  
**GENERAL HIGHWAY MAP**  
**Town of Huntington**  
CHITTENDEN COUNTY

Transportation District #5  
Prepared by the  
Vermont Agency of Transportation  
Division of Policy, Planning and Intermodal Development  
in cooperation with  
U.S. Department of Transportation  
Federal Highway Administration



Vermont State Plane Coordinate System  
North American Datum of 1983  
SPCS Zone Identifier: 4400  
Geodetic Reference System 80  
4,000-meter grid, Easting - Northing

**DISCLAIMER:**  
The untraveled highways (laid-out town highways), discontinued highways, and legal trails hereon are those of which the Agency of Transportation has record; others may exist.

Highway and bridge data by the Agency of Transportation. All other data from the Vermont Center for Geographic Information. Only named streams are shown.