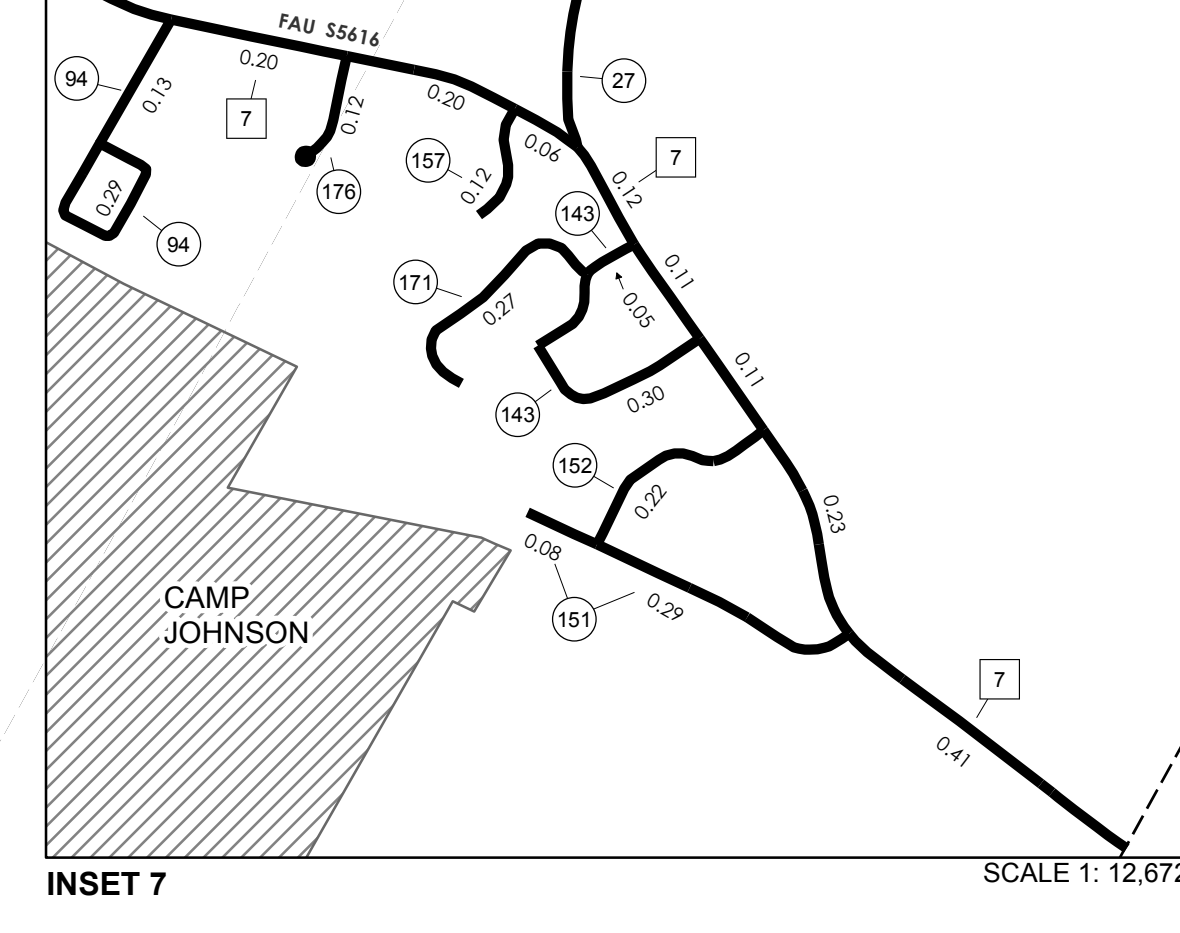
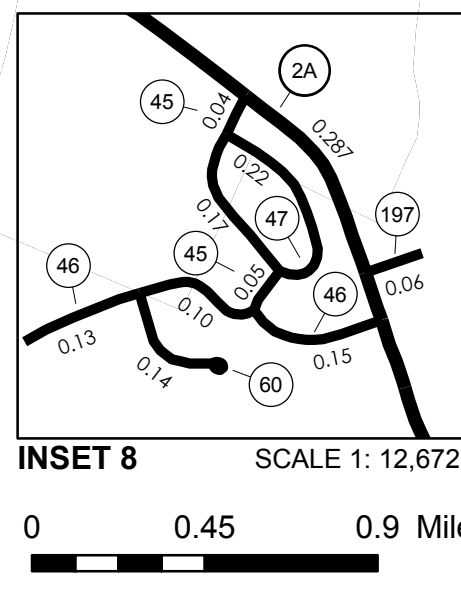
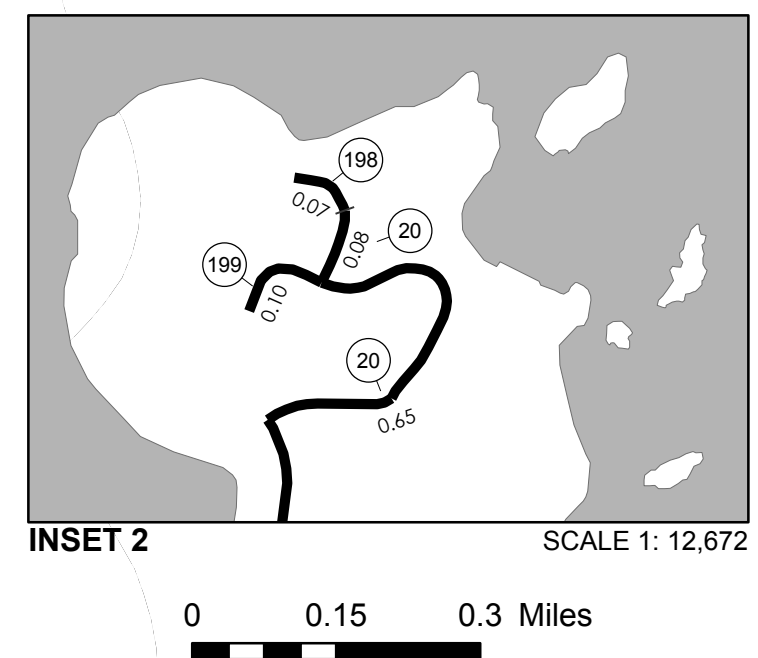
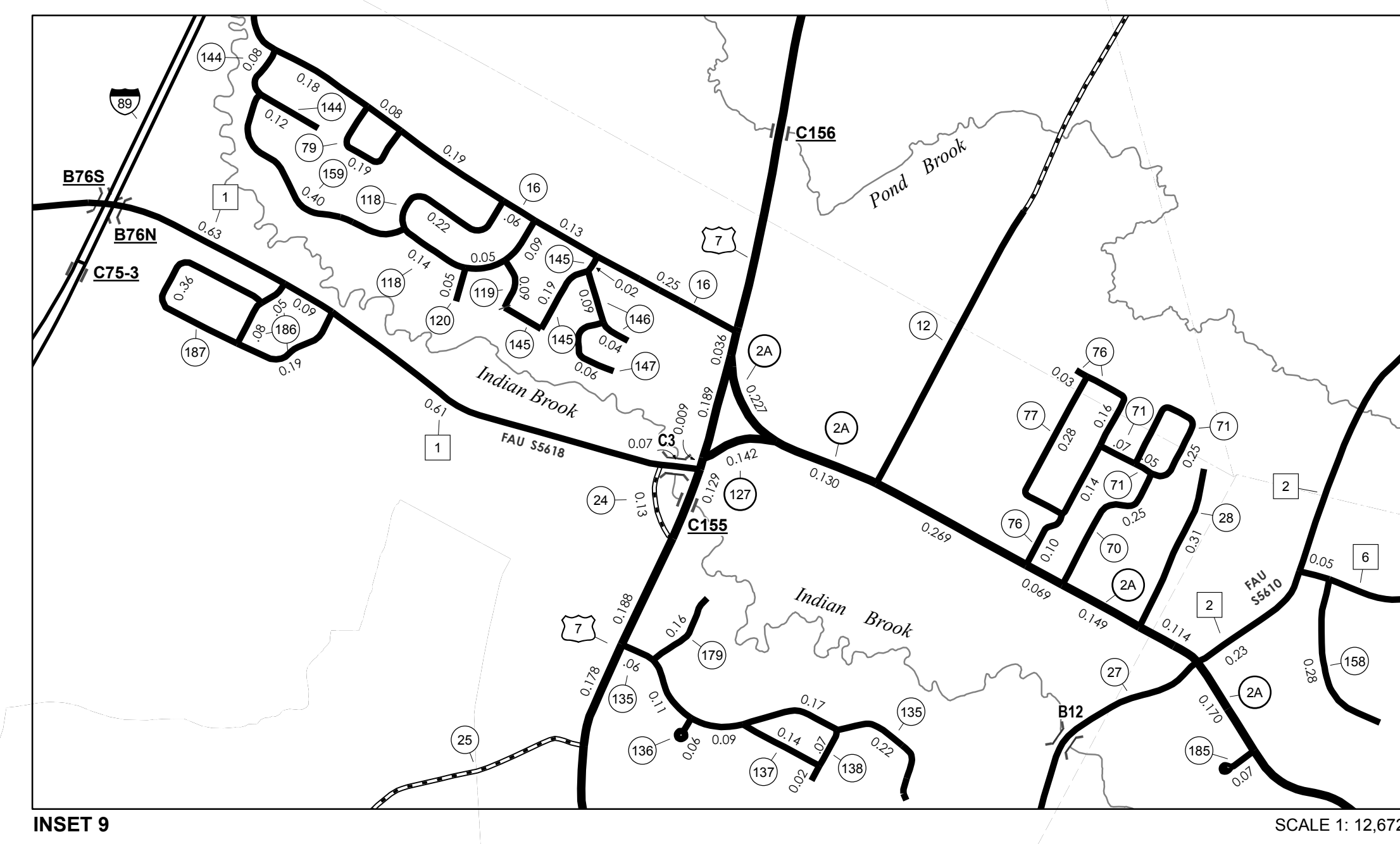
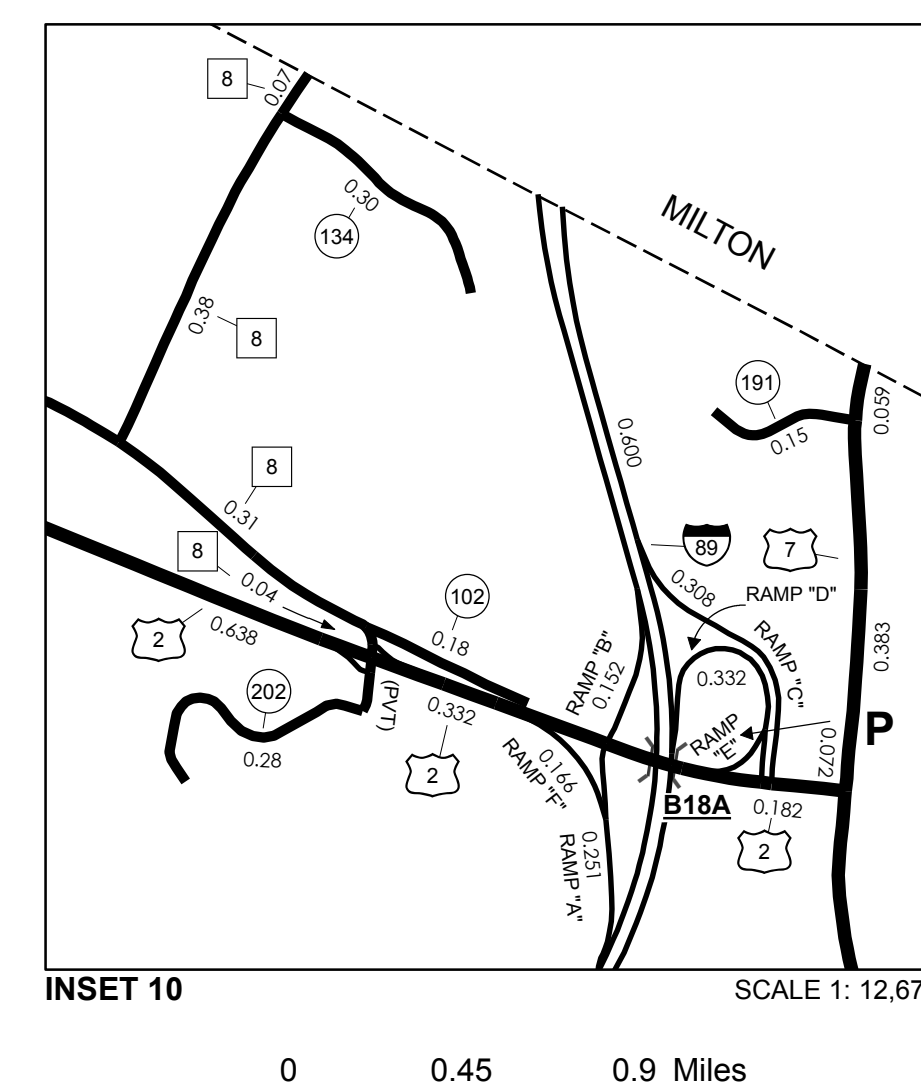
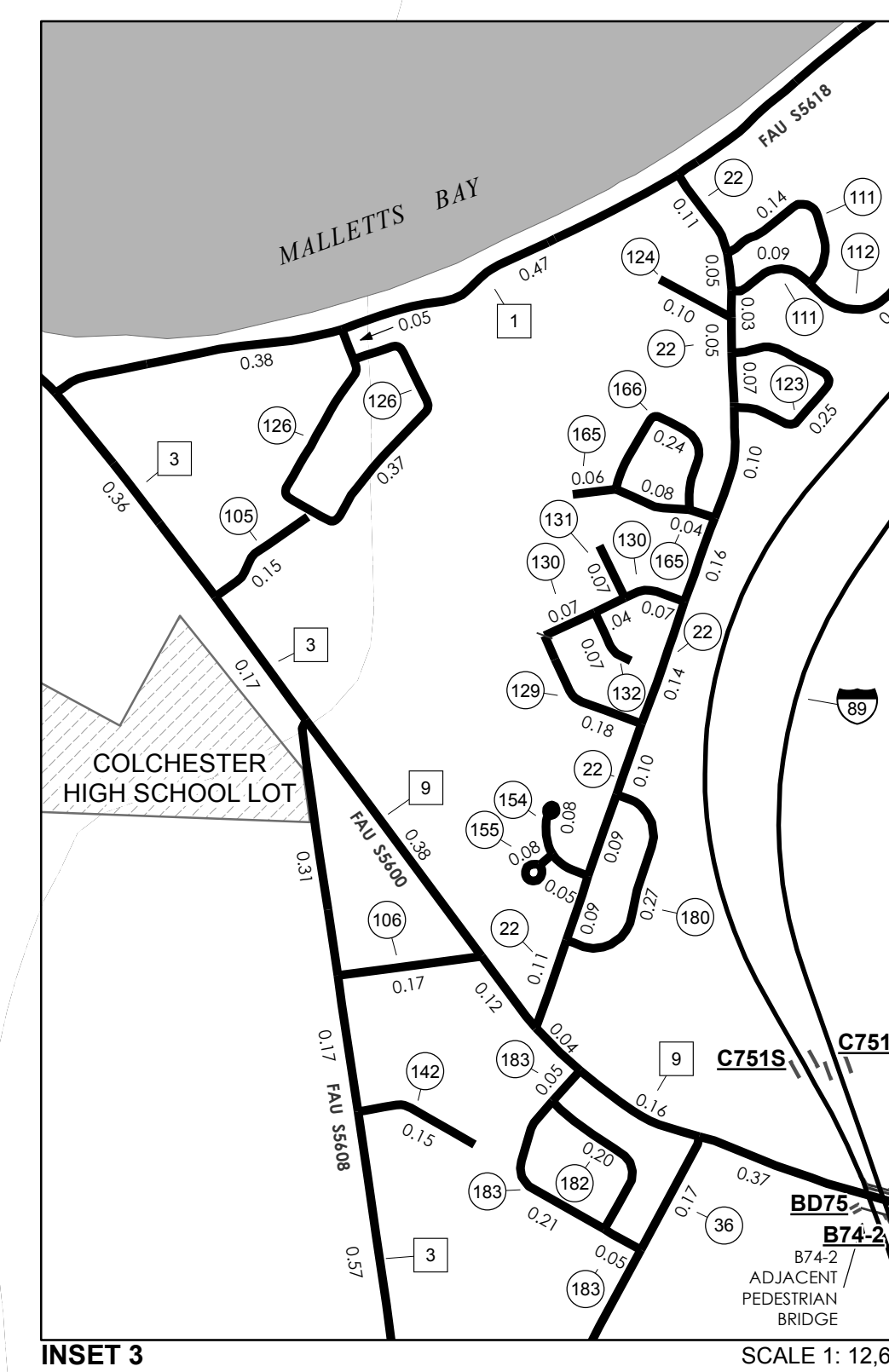
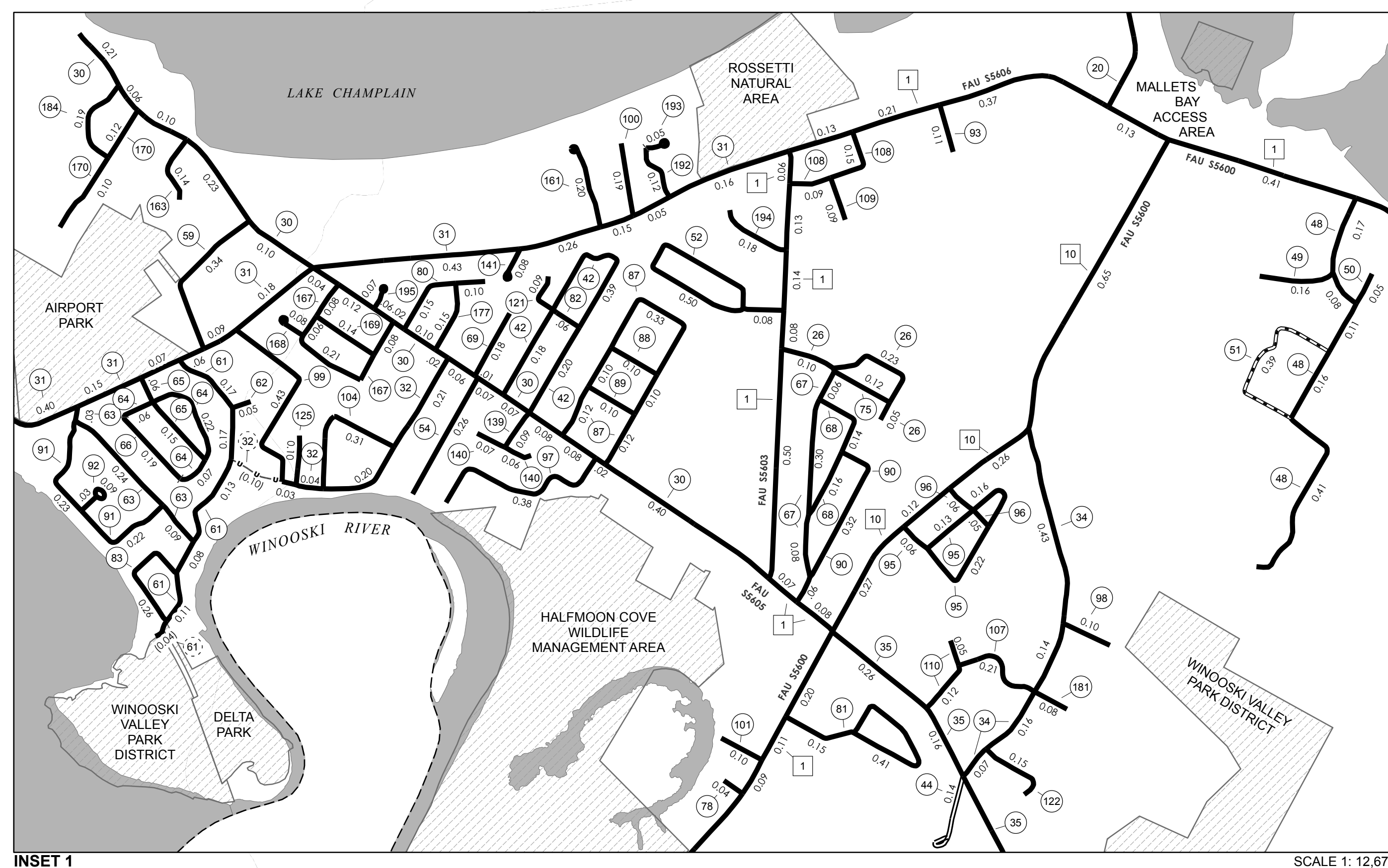


TOWN HWY. No.	LENGTH IN MILES CLASS 3	TOWN HWY. No.	LENGTH IN MILES CLASS 4
9	0.85	108	0.24
10	1.03	109	0.09
11	0.60	110	0.17
12	3.05	111	0.23
13	0.60	112	0.12
14	0.35	113	0.21
15	0.40	114	0.22
16	1.31	115	0.38
17	0.90	116	0.13
18	0.83	117	0.20
19	0.11	118	0.50
20	1.37	119	0.09
21		120	0.05
22	1.10	121	0.09
24	0.13	122	0.15
25	1.05	123	0.25
26	0.38	124	0.10
27	1.60	125	0.10
28	0.31	126	0.42
30	1.85	127	0.20
31	2.00	128	0.10
32	0.48	129	0.18
34	0.80	130	0.18
35	1.08	131	0.07
36	0.57	132	0.20
37	0.98	133	0.13
39	0.30	134	0.36
40	0.50	135	0.55
41	0.05	136	0.06
42	0.77	137	0.14
43	0.55	138	0.09
44	0.14	139	0.09
45	0.26	140	0.13
46	0.38	141	0.08
47	0.22	142	0.15
48	0.33	143	0.35
49	0.16	144	0.20
50	0.05	145	0.21
51	0.39	146	0.13
52	0.58	147	0.06
53	0.57	148	0.17
54	0.26	149	0.37
55	0.19	150	0.10
56	0.90	151	0.37
57	1.40	152	0.22
58	1.62	153	0.50
59	0.34	154	0.13
60	0.14	155	0.08
61	0.66	156	0.36
62	0.05	157	0.12
63	0.38	158	0.28
64	0.35	159	0.40
65	0.21	160	0.55
66	0.19	161	0.20
67	0.44	162	0.17
68	0.30	163	0.14
69	0.18	164	0.18
70	0.25	165	0.18
71	0.37	166	0.24
72	0.09	167	0.43
73	0.38	168	0.08
74	0.36	169	0.14
75	0.12	170	0.22
76	0.43	171	0.27
77	0.28	172	0.67
78	0.04	173	0.46
79	0.19	174	0.06
80	0.25	175	0.84
81	0.56	176	0.12
82	0.06	177	0.15
83	0.26	178	0.22
84	0.13	179	0.16
85	0.12	180	0.27
86	0.28	181	0.08
87	0.77	182	0.20
88	0.10	183	0.31
89	0.10	184	0.19
90	0.38	185	0.07
91	0.45	186	0.32
92	0.12	187	0.36
93	0.11	188	0.15
94	0.42	189	0.07
95	0.57	190	0.15
96	0.11	192	0.12
97	0.38	193	0.05
98	0.10	194	0.18
99	0.43	195	0.07
100	0.19	196	0.10
101	0.10	197	0.06
102	0.18	198	0.07
103	1.31	199	0.10
104	0.31	200	
105	0.15	201	0.26
106	0.17	202	0.28
107	0.21		
TOTAL		67.25	1.15



MILEAGE SUMMARY

CLASS 2	6,680	TH-1	2,960
TH-1	2,960	TH-2	3,440
TH-2	3,440	TH-3	0,210
TH-3	0,210	TH-4	0,750
TH-4	0,750	TH-5	0,750
TH-5	0,750	TH-6	2,030
TH-6	2,030	TH-7	0,800
TH-7	0,800	TH-8	2,200
TH-8	2,200	TH-9	1,300
TH-9	1,300	TH-10	
TH-10		TOTAL CLASS 2	21,120
TOTAL CLASS 2	21,120	TOTAL CLASS 3	67.25
TOTAL CLASS 3	67.25	TOTAL TOWN	88.370

STATE HIGHWAY	2,431	VT-2A	1,361
VT-2A	1,361	VT-15	0,142
VT-15	0,142	VT-127	
VT-127		TOTAL STATE HIGHWAY	3,934
TOTAL STATE HIGHWAY	3,934	TOTAL STATE HIGHWAY - Ramps	0,000
TOTAL STATE HIGHWAY - Ramps	0,000	US HIGHWAY	2,196
US HIGHWAY	2,196	US-7	6,960
US-7	6,960	TOTAL US HIGHWAY	9,156
TOTAL US HIGHWAY	9,156	TOTAL US HIGHWAY - Ramps	0,000
TOTAL US HIGHWAY - Ramps	0,000	TOTAL STATE	13,09
TOTAL STATE	13,09	INTERSTATE	7,568
INTERSTATE	7,568	I-89	7,568
I-89	7,568	TOTAL INTERSTATE	7,568
TOTAL INTERSTATE	7,568	INTERSTATE - Ramps	2,206
INTERSTATE - Ramps	2,206	I-89	2,206
I-89	2,206	TOTAL INTERSTATE - Ramps	2,206
TOTAL INTERSTATE - Ramps	2,206	TOTAL INTERSTATE	9,774
TOTAL INTERSTATE	9,774	TOTAL, TRAVELED HIGHWAYS, FEB. 10, 2012:	111,234
TOTAL, TRAVELED HIGHWAYS, FEB. 10, 2012:	111,234	(Excludes Class 4, Legal Trail, and Undeveloped Corridor Mileage)	

TOWN HWY. No.	LENGTH IN MILES "NOT UP TO STANDARD"	LEGAL TRAIL No.	LENGTH IN MILES LEGAL TRAIL
18	(0.08)	1	(0.39)
61	(0.04)	2	(0.09)
TOTAL	0.12	TOTAL	0.48

*The sections of the town highways listed above are legally Class 3, but have been deemed "Not Up To Standard" and are functionally Class 4 Town Highways

- HIGHWAYS**
- INTERSTATE
 - U.S. ROUTE
 - STATE ROUTE
 - CLASS 1
 - CLASS 2
 - CLASS 3
 - CLASS 4
 - LEGAL TRAIL
 - INTERSTATE OR DIVIDED HIGHWAY
 - STATE - HARD SURFACE OR PAVED
 - TOWN - HARD SURFACE OR PAVED
 - GRAVEL
 - SOIL OR GRADED AND DRAINED EARTH
 - UNIMPROVED OR PRIMITIVE
 - IMPASSABLE OR UNTRAVELED
 - LEGAL TRAIL
 - DISCONTINUED
 - HIGHWAY CLASS CHANGE
 - RAILROAD
 - INACTIVE RAILROAD
 - PUBLIC LAND - GREEN MOUNTAIN NATIONAL FOREST
 - PUBLIC LAND - STATE/MUNICIPAL
- POLITICAL SUBDIVISIONS**
- STATE BOUNDARY
 - COUNTY BOUNDARY
 - TOWN BOUNDARY
 - VILLAGE BOUNDARY
 - URBAN COMPACT BOUNDARY
 - WATER BODY
 - STREAM OR BROOK
- BRIDGE OR CULVERT**
- BRIDGE OR CULVERT GREATER THAN 20'
 - BRIDGE OR CULVERT 6' - 20'
 - STATE BRIDGE OR CULVERT IDENTIFIER
 - TOWN BRIDGE OR CULVERT IDENTIFIER
 - PARK AND RIDE
- FEDERAL CLASSIFICATION IDENTIFIER**
- FAU URBAN ARTERIAL OR COLLECTOR
 - MA MINOR ARTERIAL
 - MJC MAJOR COLLECTOR
 - MNC MINOR COLLECTOR
 - PA PRINCIPAL ARTERIAL

DISCLAIMER:
 The untraveled highways (dashed town highways), discontinued highways, and legal trails herein are those of which the Agency of Transportation has record; others may exist.
 Highway and bridge data by the Agency of Transportation. All other data from the Vermont Center for Geographic Information. Only named streams are shown.

Vermont State Plane Coordinate System
 North American Datum of 1983
 SPCS, Zone Identifier: 4400
 Geocentric Reference System 80
 4,000-meter grid, Easting - Northing

VERMONT GENERAL HIGHWAY MAP
Town of Colchester
 CHITTENDEN COUNTY
 Transportation District #5

Prepared by the
 Vermont Agency of Transportation
 in cooperation with
 U.S. Department of Transportation
 Federal Highway Administration

Mileage as of February 10, 2012
 Map prepared October 10, 2012
 SCALE 1: 31,680