

428,000 432,000 436,000 440,000 444,000 448,000 452,000

TOWN HWY. NO.	LENGTH IN MILES CLASS 3	CLASS 4
8	1.630	
9	5.050	
10	0.190	
11	1.550	
12	2.500	
14	1.750	
15	0.350	
17	1.500	
18	1.010	
19	0.260	
20	0.070	(0.200)
21	3.300	
22	1.400	
23	0.650	
24	2.550	
25	0.150	
26	1.150	
27	1.000	
28	0.100	
29	0.730	
30	0.100	
31	1.300	
32	1.140	
33	0.390	
34	0.300	
35	2.650	
36	0.600	
37	1.600	
38	0.230	(0.170)
39	1.650	
40	0.120	
41	0.300	
42	0.380	
43	0.760	
44	1.600	
45	0.250	
46	1.180	
47	0.160	
48	0.070	
49	0.740	
50	0.050	
51	0.150	
TOTAL	42.610	0.370

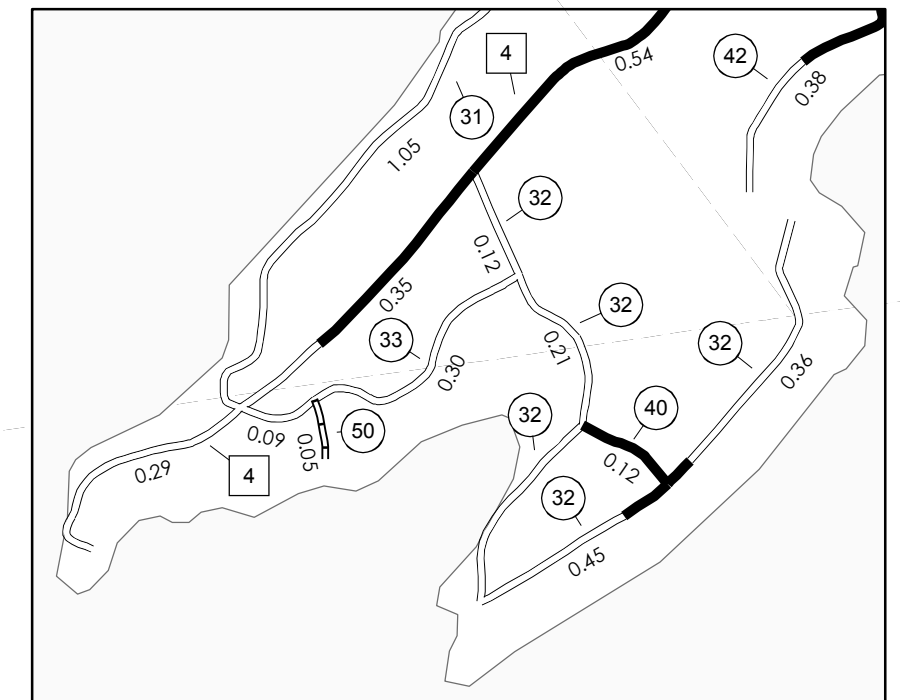
MILEAGE SUMMARY

CLASS	LENGTH IN MILES
CLASS 2	
TH-1	6.070
TH-2	4.640
TH-3	2.890
TH-4	7.760
TH-5	1.500
TH-6	2.150
TH-7	1.070
TH-8	2.810
TH-9	2.900
TOTAL CLASS 2	31.790
CLASS 3	
TOTAL CLASS 3	42.610
TOTAL TOWN	74.400
US HIGHWAY	
US-7	6.550
TOTAL US HIGHWAY	6.550
TOTAL STATE	6.550

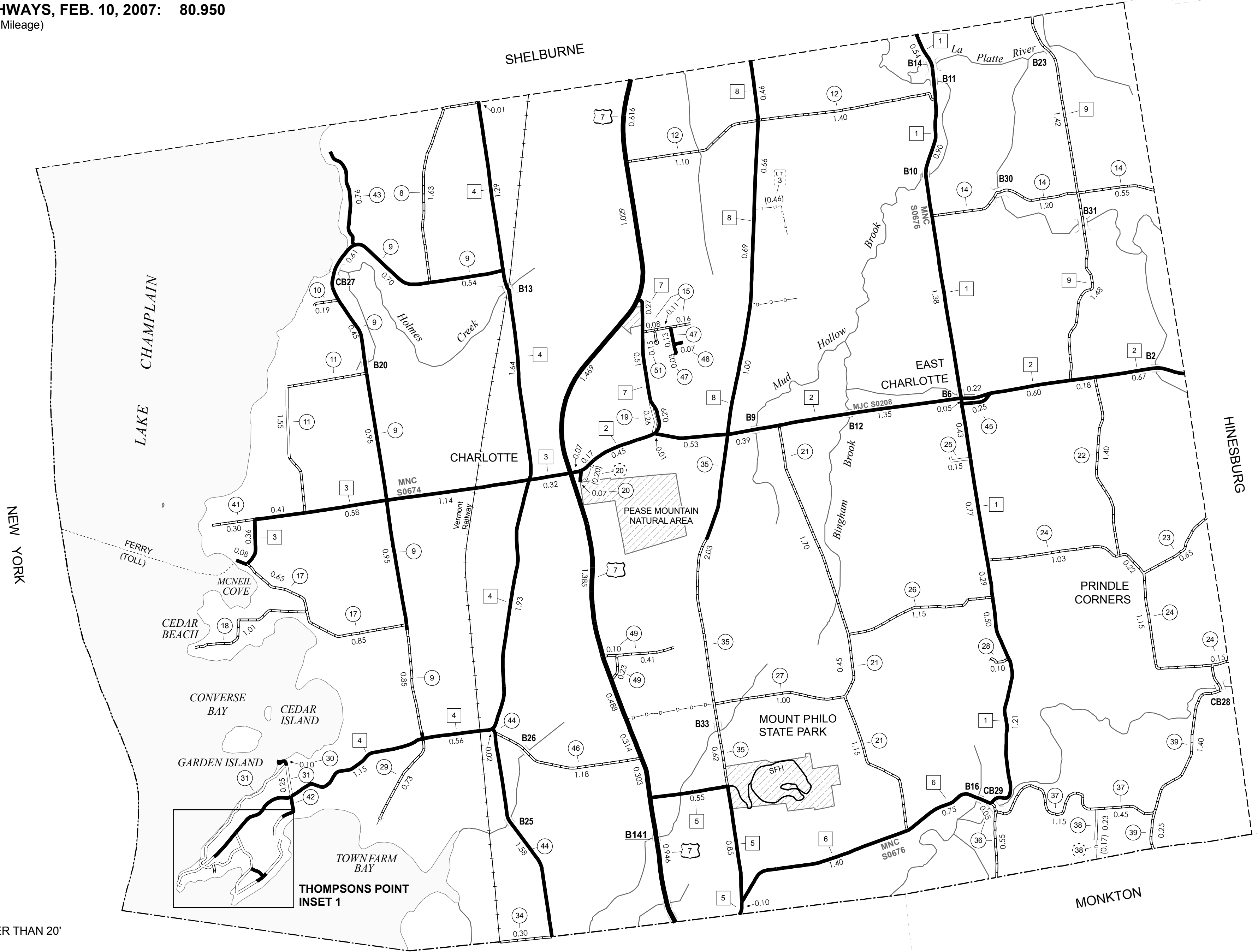
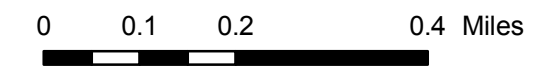
TOTAL, TRAVELED HIGHWAYS, FEB. 10, 2007: 80.950
(Excludes Class 4 and Legal Trail Mileage)

LEGAL TRAIL

LEGAL TRAIL NO.	LENGTH IN MILES
3	(0.460)
TOTAL	0.460



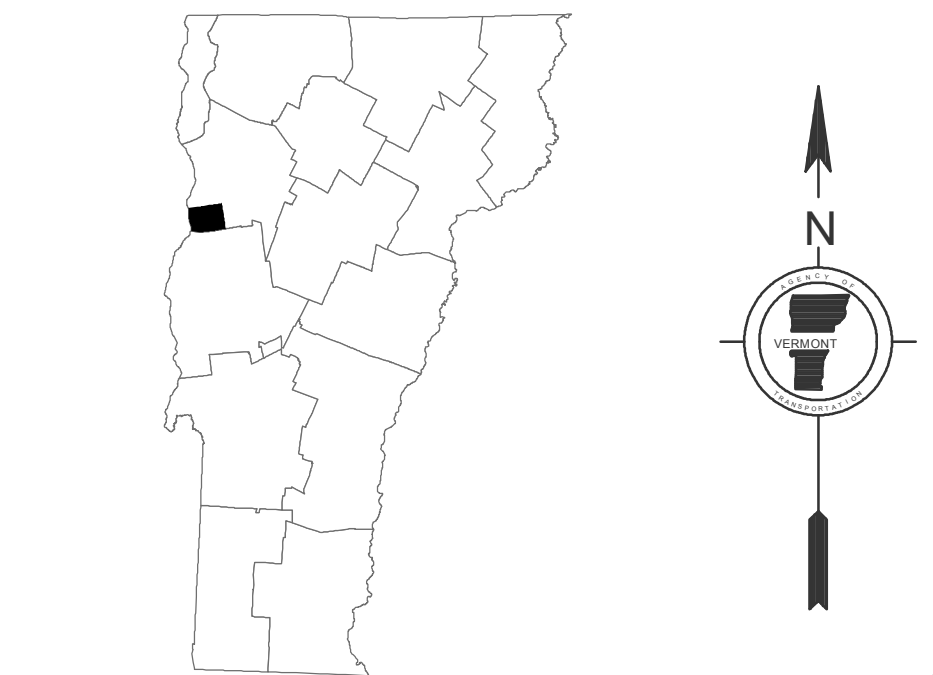
THOMPSONS POINT INSET 1 SCALE 1:12762



- HIGHWAYS**
- INTERSTATE
 - U.S. ROUTE
 - STATE ROUTE
 - CLASS 1
 - CLASS 2
 - CLASS 3
 - CLASS 4
 - LEGAL TRAIL
 - INTERSTATE OR DIVIDED HIGHWAY
 - STATE - HARD SURFACE OR PAVED
 - TOWN - HARD SURFACE OR PAVED
 - STATE FOREST - HARD SURFACE
 - GRAVEL
 - SOIL OR GRADED AND DRAINED EARTH
 - UNIMPROVED OR PRIMITIVE
 - IMPASSABLE OR UNTRAVELED
 - LEGAL TRAIL
 - DISCONTINUED
 - HIGHWAY CLASS CHANGE
 - RAILROAD
 - FERRY
- POLITICAL SUBDIVISIONS**
- STATE BOUNDARY
 - COUNTY BOUNDARY
 - TOWN BOUNDARY
 - VILLAGE BOUNDARY
 - URBAN COMPACT BOUNDARY
- WATER BODIES**
- OPEN WATER
 - SWAMP
 - STREAM OR BROOK
- BRIDGE OR CULVERT**
- BRIDGE OR CULVERT GREATER THAN 20'
 - BRIDGE OR CULVERT 6' - 20'
 - B34 STATE BRIDGE IDENTIFIER
 - B34 TOWN BRIDGE IDENTIFIER
- FEDERAL CLASSIFICATION IDENTIFIER**
- FAU URBAN ARTERIAL OR COLLECTOR
 - MA MINOR ARTERIAL
 - MJC MAJOR COLLECTOR
 - MNC MINOR COLLECTOR
 - PA PRINCIPAL ARTERIAL

DISCLAIMER:
The untraveled highways (laid-out town highways), discontinued highways, and legal trails shown hereon are those of which the Agency of Transportation has record; others may exist.
Highway and bridge data by the Agency of Transportation, Policy & Planning Division. All other data from the Vermont Center for Geographic Information.

Vermont State Plane Coordinate System
North American Datum of 1983
SPCS_Zone_Identifier: 4400
Geodetic Reference System 80
4,000-meter grid, Easting - Northing

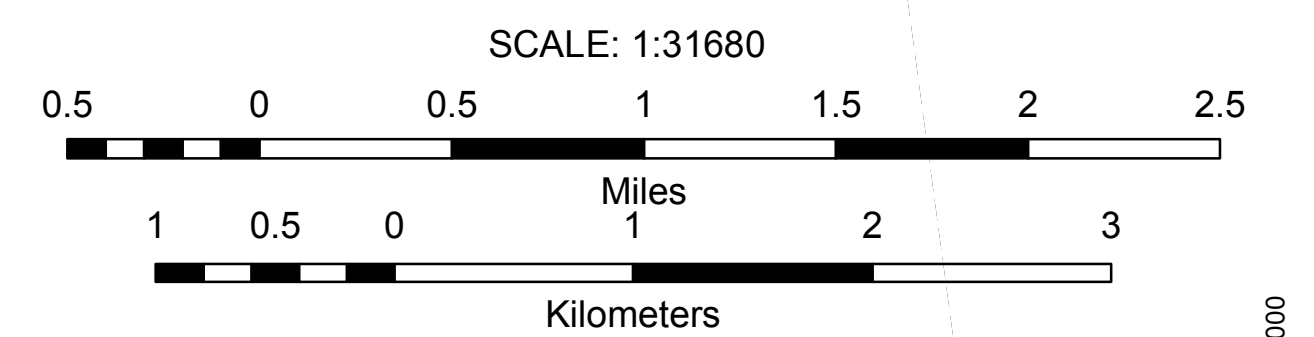


VERMONT
GENERAL HIGHWAY MAP
Town of Charlotte
CHITTENDEN COUNTY

Transportation District #5

Prepared by the
Vermont Agency of Transportation
Policy & Planning Division
in cooperation with
U.S. Department of Transportation
Federal Highway Administration

Mileage as of: Feb. 10, 2007
Map generated: October, 2007



428,000 432,000 436,000 440,000 444,000 448,000 452,000

