

TOWN HWY. No.	LENGTH IN MILES CLASS 3	CLASS 4
4		(0.20)
5	2.15	
6		(0.06)
7	1.97	(0.79)
8		(0.15)
9	3.42	
10	0.60	
11	0.60	
12	0.15	
13	0.60	
14	0.95	(0.31)
15	1.70	
16		(1.15)
17	1.50	
18	0.45	
19	1.37	
21	0.70	
22	0.11	(0.14)
23	3.15	
24	1.90	
25	0.03	
26	0.65	
28	0.34	
30	0.06	
32	0.32	(0.63)
33	0.60	
35		(0.28)
36	0.10	(0.30)
37	1.09	
38	2.98	
39	0.40	
40	0.10	
41	1.60	
42		(0.75)
43	0.40	(0.30)
44	1.85	
45	1.98	
48	0.35	
49	0.10	(0.55)
50	0.10	
51	0.38	
52	0.19	
<b>TOTAL</b>	<b>34.94</b>	<b>5.61</b>

**MILEAGE SUMMARY**

CLASS 2		
TH-1	7.820	
TH-2	1.900	
TH-3	2.590	
<b>TOTAL CLASS 2</b>	<b>12.310</b>	
CLASS 3		
<b>TOTAL CLASS 3</b>	<b>34.94</b>	
<b>TOTAL TOWN</b>	<b>47.250</b>	
STATE HIGHWAY		
VT-5A	3.204	
<b>TOTAL STATE HIGHWAY</b>	<b>3.204</b>	
US HIGHWAY		
US-5	7.329	
<b>TOTAL US HIGHWAY</b>	<b>7.329</b>	
<b>TOTAL STATE</b>	<b>10.533</b>	
<b>TOTAL, TRAVELED HIGHWAYS, FEB. 10, 2013:</b>	<b>57.783</b>	
<small>(Excludes Class 4, Legal Trail, and Unidentified Corridor Mileage)</small>		

**LEGAL TRAIL**

No.	LENGTH IN MILES
1	(0.37)
2	(1.20)
3	(0.75)
4	(1.05)
5	(0.40)
<b>TOTAL</b>	<b>3.77</b>

**HIGHWAYS**

- INTERSTATE
- STATE - HARD SURFACE OR PAVED
- TOWN - HARD SURFACE OR PAVED
- GRAVEL
- SOIL OR GRADED AND DRAINED EARTH
- UNIMPROVED OR PRIMITIVE
- IMPASSABLE OR UNTRAVELED
- LEGAL TRAIL
- DISCONTINUED
- HIGHWAY CLASS CHANGE
- RAILROAD
- INACTIVE RAILROAD
- NATIONAL FOREST ROAD
- STATE FOREST HIGHWAY
- PARK AND RIDE

**POLITICAL SUBDIVISIONS**

- STATE BOUNDARY
- COUNTY BOUNDARY
- TOWN BOUNDARY
- VILLAGE BOUNDARY
- URBAN COMPACT BOUNDARY
- WATER BODY
- STREAM OR BROOK

**BRIDGE OR CULVERT**

- BRIDGE OR CULVERT GREATER THAN 20'
- BRIDGE OR CULVERT 6' - 20'

**B34 / C34** STATE BRIDGE OR CULVERT IDENTIFIER  
**B34 / C34** TOWN BRIDGE OR CULVERT IDENTIFIER

**FEDERAL CLASSIFICATION IDENTIFIER**

- FAU URBAN ARTERIAL OR COLLECTOR
- MA MINOR ARTERIAL
- MJC MAJOR COLLECTOR
- MNC MINOR COLLECTOR
- PA PRINCIPAL ARTERIAL

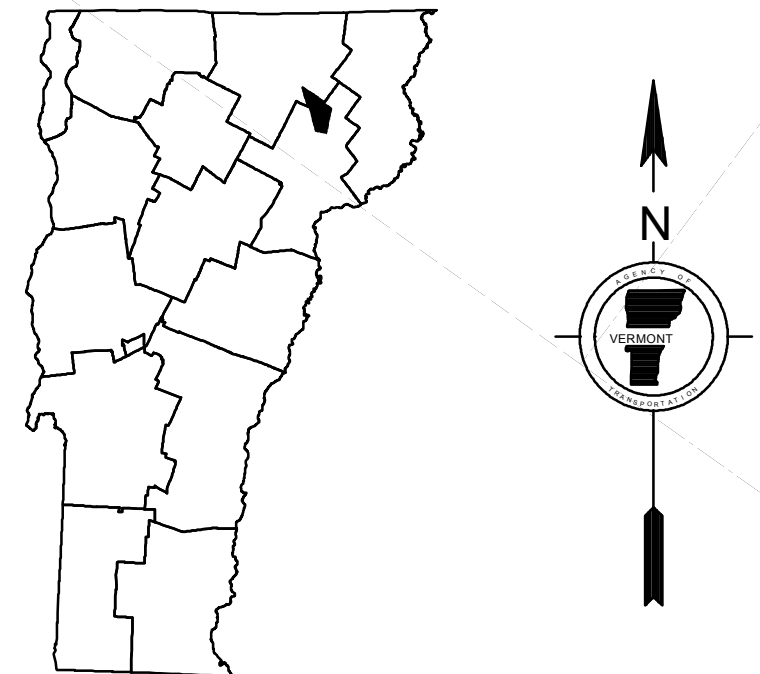
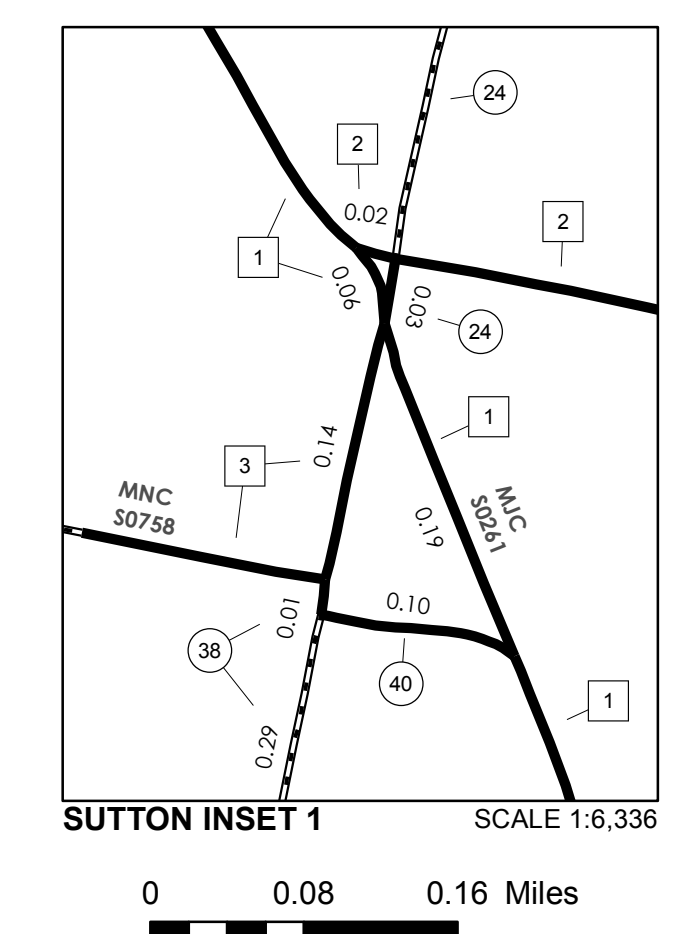
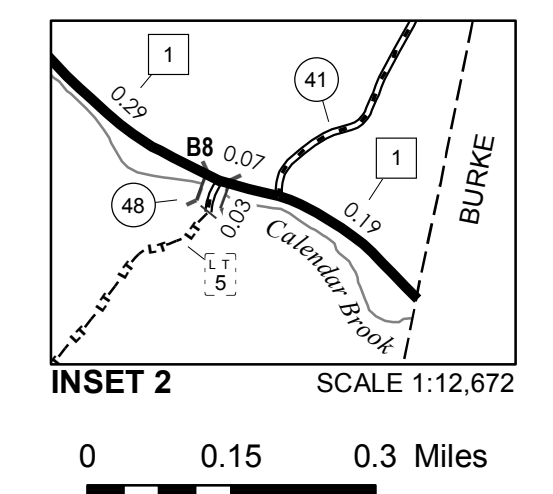
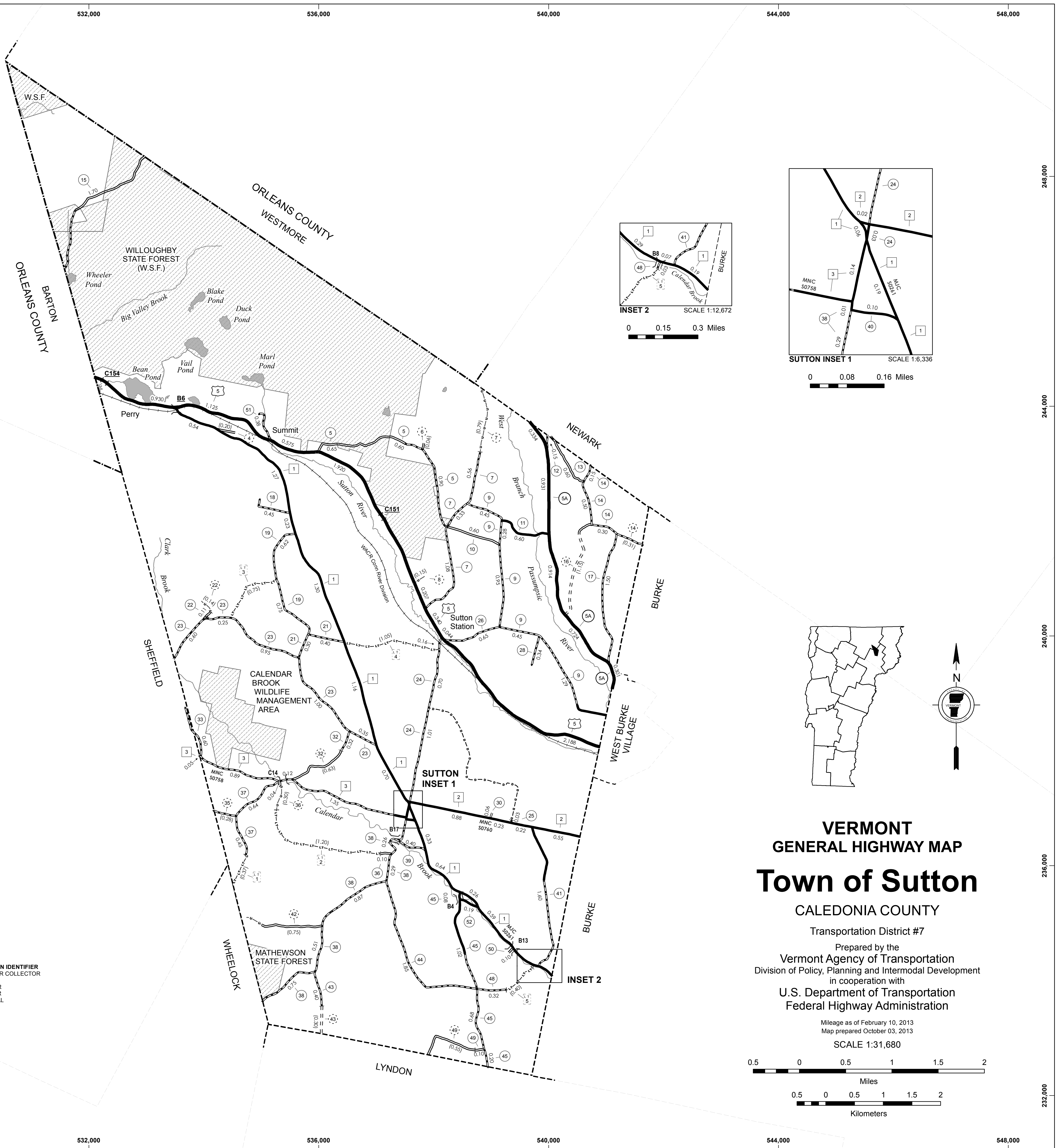
**PUBLIC LAND - GREEN MOUNTAIN NATIONAL FOREST**

**PUBLIC LAND - STATE/MUNICIPAL**

**DISCLAIMER:**  
 The untraveled highways (laid-out town highways), discontinued highways, and legal trails hereon are those of which the Agency of Transportation has record; others may exist.

Highway and bridge data by the Agency of Transportation. All other data from the Vermont Center for Geographic Information. Only named streams are shown.

Vermont State Plane Coordinate System  
 North American Datum of 1983  
 SPCS\_Zone\_Identifier: 4400  
 Geodetic Reference System 80  
 4,000-meter grid, Easting - Northing



**VERMONT**  
**GENERAL HIGHWAY MAP**  
**Town of Sutton**  
 CALEDONIA COUNTY  
 Transportation District #7  
 Prepared by the  
 Vermont Agency of Transportation  
 Division of Policy, Planning and Intermodal Development  
 in cooperation with  
 U.S. Department of Transportation  
 Federal Highway Administration

Mileage as of February 10, 2013  
 Map prepared October 03, 2013  
 SCALE 1:31,680

0.5 0 0.5 1 1.5 2  
 Miles  
 0.5 0 0.5 1 1.5 2  
 Kilometers