

TOWN HWY. No.	LENGTH IN MILES CLASS 3	CLASS 4
4		(0.20)
6	2.15	
7		(0.06)
8	1.97	(0.79)
9		(0.15)
10	3.42	
11	0.60	
12	0.60	
13	0.15	
14	0.95	(0.31)
15	1.70	
16		(1.15)
17	1.50	
18	0.45	
19	1.37	
21	0.70	
22	0.11	(0.14)
23	3.15	
24	1.90	
25	0.03	
26	0.65	
28	0.34	
30	0.06	
32	0.32	(0.63)
33	0.60	
35		(0.28)
36	0.10	(0.30)
37	1.09	
38	2.98	
39	0.40	
40	0.10	
41	1.60	
42		(0.75)
43	0.40	(0.30)
44	1.85	
45	1.98	
48	0.35	
49	0.10	(0.55)
50	0.10	
51	0.38	
52	0.19	
TOTAL	34.94	5.61

MILEAGE SUMMARY

CLASS 2	7.820	
TH-1	1.900	
TH-2	2.590	
TH-3		
TOTAL CLASS 2	12.310	
CLASS 3		
TOTAL CLASS 3	34.94	
TOTAL TOWN	47.250	
STATE HIGHWAY		
VT-5A	3.204	
TOTAL STATE HIGHWAY	3.204	
US HIGHWAY		
US-5	7.329	
TOTAL US HIGHWAY	7.329	
TOTAL STATE	10.533	
TOTAL, TRAVELED HIGHWAYS, FEB. 10, 2012:	57.783	

(Excludes Class 4, Legal Trail, and Unidentified Corridor Mileage)

LEGAL TRAIL

No.	LENGTH IN MILES LEGAL TRAIL
1	(0.37)
2	(1.20)
3	(0.75)
4	(1.05)
5	(0.40)
TOTAL	3.77

HIGHWAYS

- INTERSTATE
- U.S. ROUTE
- STATE ROUTE
- CLASS 1
- CLASS 2
- CLASS 3
- CLASS 4
- LEGAL TRAIL

INTERSTATE OR DIVIDED HIGHWAY

- STATE - HARD SURFACE OR PAVED
- TOWN - HARD SURFACE OR PAVED
- GRAVEL
- SOIL OR GRADED AND DRAINED EARTH
- UNIMPROVED OR PRIMITIVE
- IMPASSABLE OR UNTRAVELED
- LEGAL TRAIL
- DISCONTINUED
- HIGHWAY CLASS CHANGE
- RAILROAD
- INACTIVE RAILROAD
- PARK AND RIDE

PUBLIC LAND - GREEN MOUNTAIN NATIONAL FOREST

PUBLIC LAND - STATE/MUNICIPAL

POLITICAL SUBDIVISIONS

- STATE BOUNDARY
- COUNTY BOUNDARY
- TOWN BOUNDARY
- VILLAGE BOUNDARY
- URBAN COMPACT BOUNDARY
- WATER BODY
- STREAM OR BROOK

FEDERAL CLASSIFICATION IDENTIFIER

- FAU URBAN ARTERIAL OR COLLECTOR
- MA MINOR ARTERIAL
- MJC MAJOR COLLECTOR
- MNC MINOR COLLECTOR
- PA PRINCIPAL ARTERIAL

BRIDGE OR CULVERT

- BRIDGE OR CULVERT GREATER THAN 20'
- BRIDGE OR CULVERT 6' - 20'

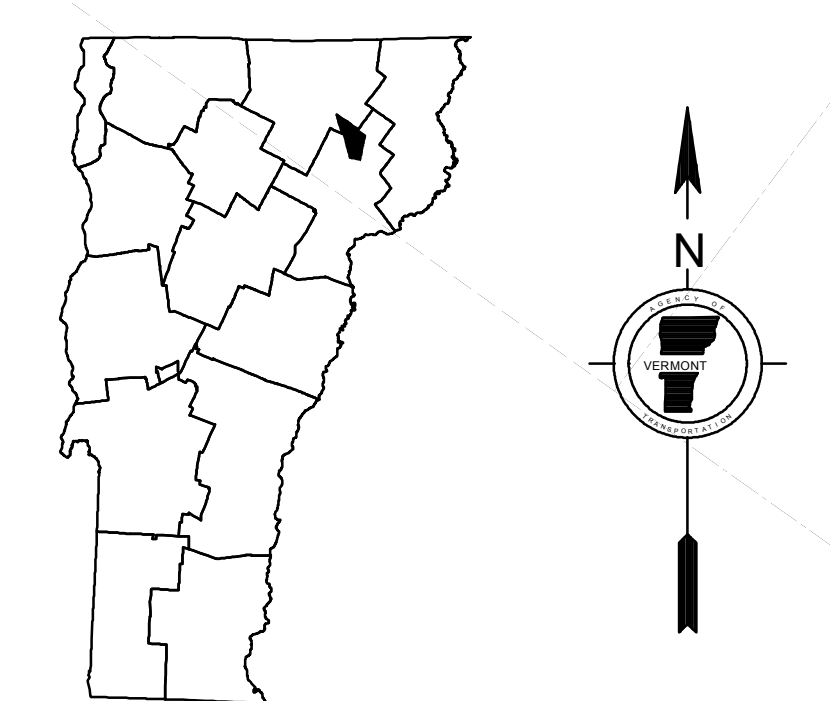
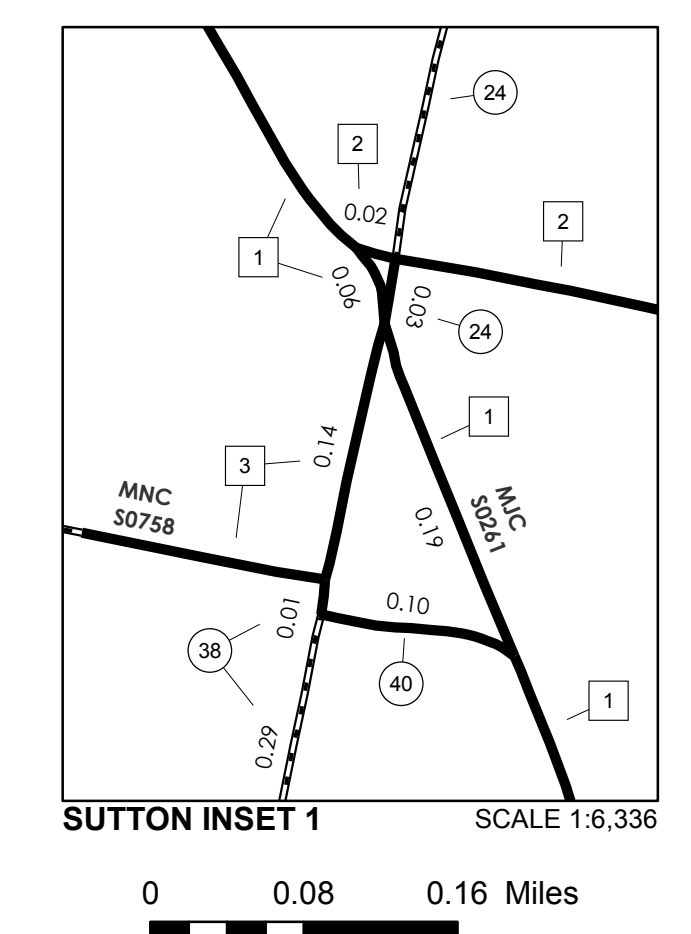
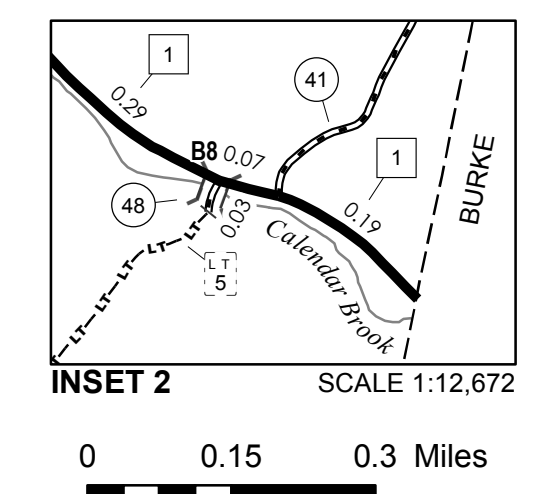
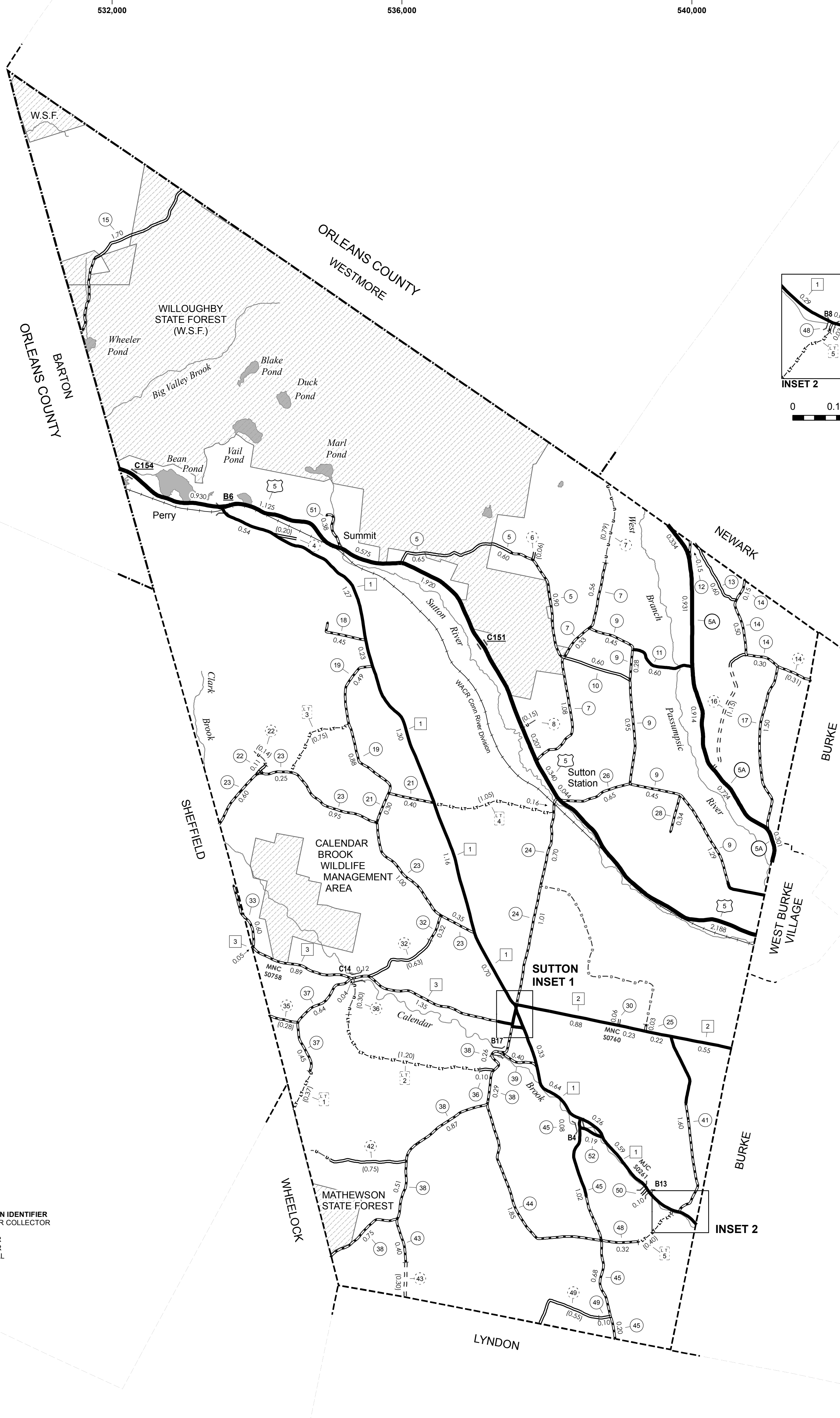
B34 / C34 STATE BRIDGE OR CULVERT IDENTIFIER

B34 / C34 TOWN BRIDGE OR CULVERT IDENTIFIER

DISCLAIMER:
The untraveled highways (laid-out town highways), discontinued highways, and legal trails herein are those of which the Agency of Transportation has record; others may exist.

Highway and bridge data by the Agency of Transportation. All other data from the Vermont Center for Geographic Information. Only named streams are shown.

Vermont State Plane Coordinate System
North American Datum of 1983
SPCS_Zone_Identifier: 4400
Geodetic Reference System 80
4,000-meter grid, Easting - Northing



VERMONT GENERAL HIGHWAY MAP

Town of Sutton

CALEDONIA COUNTY

Transportation District #7

Prepared by the
Vermont Agency of Transportation
Division of Policy, Planning and Intermodal Development
in cooperation with
U.S. Department of Transportation
Federal Highway Administration

Mileage as of February 10, 2012
Map prepared September 26, 2012

SCALE 1:31,680

0.5 0 0.5 1 1.5 2 Miles

0.5 0 0.5 1 1.5 2 Kilometers