

TOWN HWY. No.	LENGTH IN MILES		TOWN HWY. No.	LENGTH IN MILES	
	CLASS 3	CLASS 4		CLASS 3	CLASS 4
9	0.75	(0.92)	37		(0.79)
10		(0.30)	38		(0.40)
12		(0.10)	39	1.43	
13	2.82		40	0.02	
14	0.95		41	3.38	
15	2.90		42	1.85	
16	0.20		43	1.10	
17	1.25		44	1.71	
18	0.50		45	0.55	
19	1.98		46	1.70	
20		(0.32)	47		(0.40)
21		(0.06)	48	0.52	
22	0.65		49	0.20	
23		(0.62)	50	0.83	
24		(0.55)	51	0.35	(0.03)
25		(0.30)	52	0.07	(0.17)
26	0.93		53	0.05	
27		(0.25)	54	0.03	(0.12)
28	0.08		55	0.15	
29	2.24		57		(0.03)
30	0.07		58	1.47	
31	0.31		59	0.14	
32	0.43		60	0.15	
33	0.10		61	0.35	
34	0.20		62	0.09	
35	0.13		63	0.90	
36	0.16		64	0.15	
TOTAL			33.84	5.36	

MILEAGE SUMMARY

CLASS 2		
TH-1	2,380	
TH-2	4,950	
TH-3	1,400	
TH-4	1,240	
TH-5	3,410	
TH-6	1,100	
TH-7	1,950	
TH-8	1,030	
TOTAL CLASS 2		17,460
CLASS 3		
TOTAL CLASS 3		33.84
TOTAL TOWN		51,300
STATE HIGHWAY		
VT-5A	0.657	
VT-114	5.013	
TOTAL STATE HIGHWAY		5,670
US HIGHWAY		
US-5	4,320	
TOTAL US HIGHWAY		4,320
TOTAL STATE		9,990

TOTAL, TRAVELED HIGHWAYS, FEB. 10, 2015: 61,290
(Excludes Class 4, Legal Trail, and Unidentified Corridor Mileage)

LEGAL TRAIL

LEGAL TRAIL No.	LENGTH IN MILES	LEGAL TRAIL
1	0.50	
TOTAL	0.50	

HIGHWAYS

- INTERSTATE OR DIVIDED HIGHWAY
- STATE - HARD SURFACE OR PAVED
- TOWN - HARD SURFACE OR PAVED
- GRAVEL
- SOIL OR GRADED AND DRAINED EARTH
- UNIMPROVED OR PRIMITIVE
- IMPASSABLE OR UNTRAVELED
- LEGAL TRAIL
- DISCONTINUED
- HIGHWAY CLASS CHANGE
- RAILROAD
- INACTIVE RAILROAD
- NATIONAL FOREST ROAD
- STATE FOREST HIGHWAY
- PARK AND RIDE

POLITICAL SUBDIVISIONS

- STATE BOUNDARY
- COUNTY BOUNDARY
- TOWN BOUNDARY
- VILLAGE BOUNDARY
- URBAN COMPACT BOUNDARY
- WATER BODY
- STREAM OR BROOK
- BRIDGE OR CULVERT
- BRIDGE OR CULVERT > 20'
- BRIDGE OR CULVERT 6' - 20'
- VOBCIT BRIDGE
- VOBCIT CULVERT > 6'

FEDERAL CLASSIFICATION IDENTIFIER

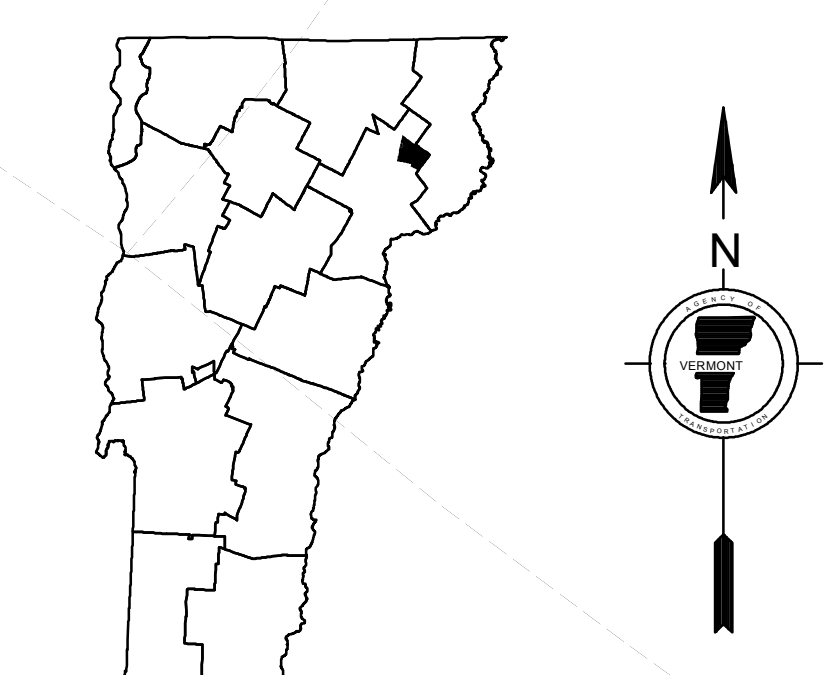
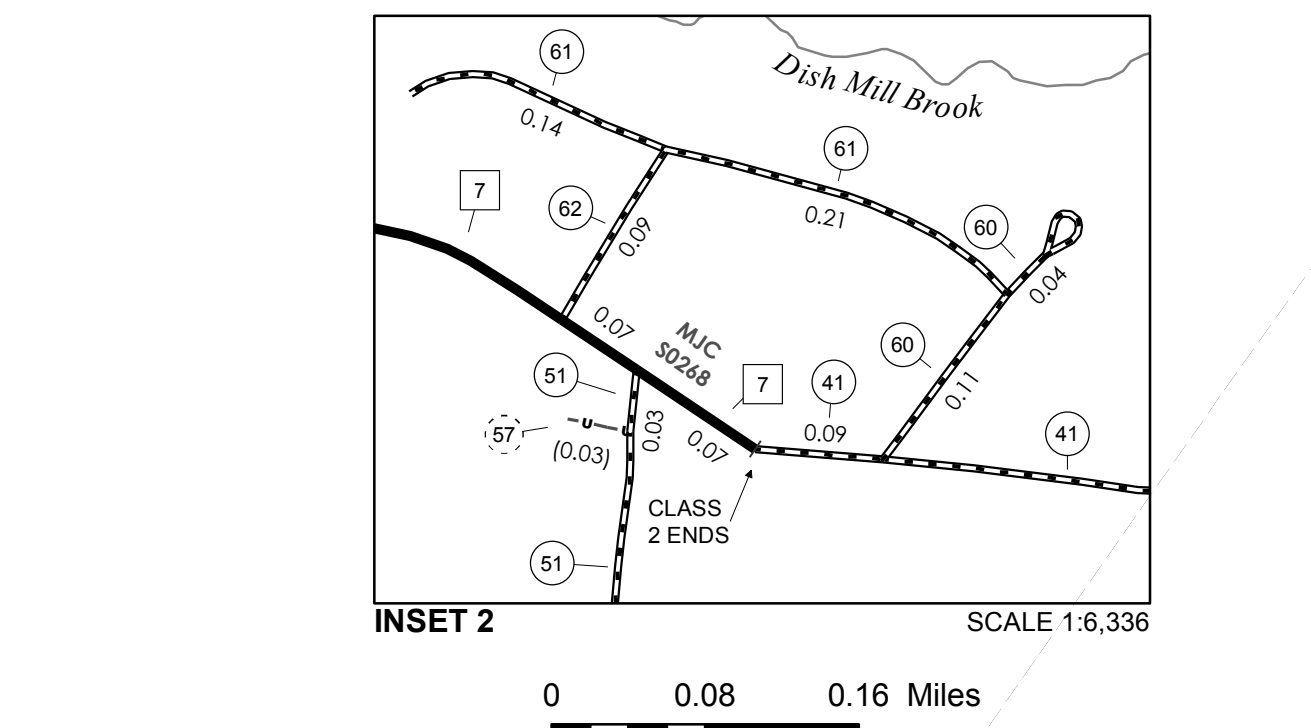
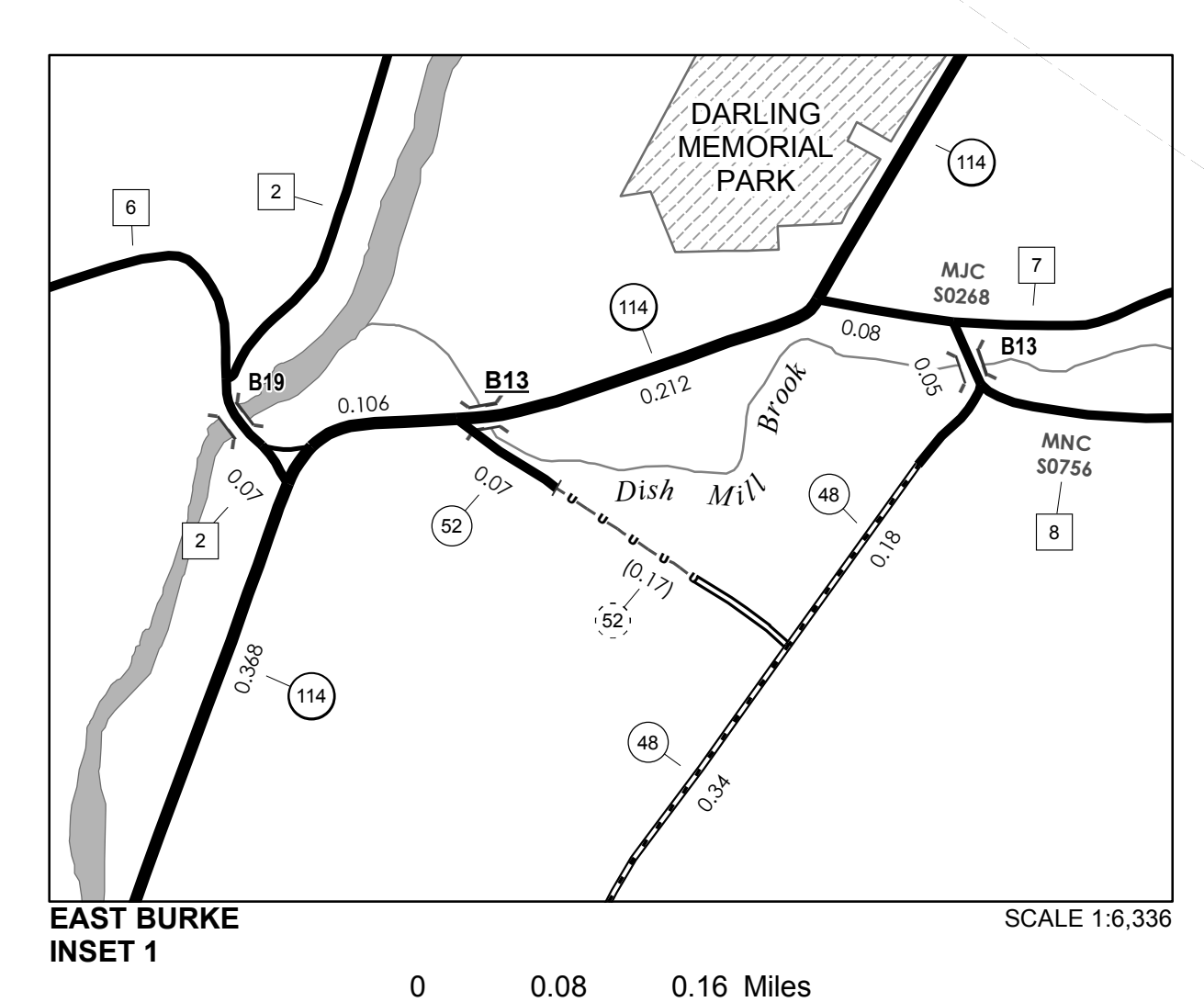
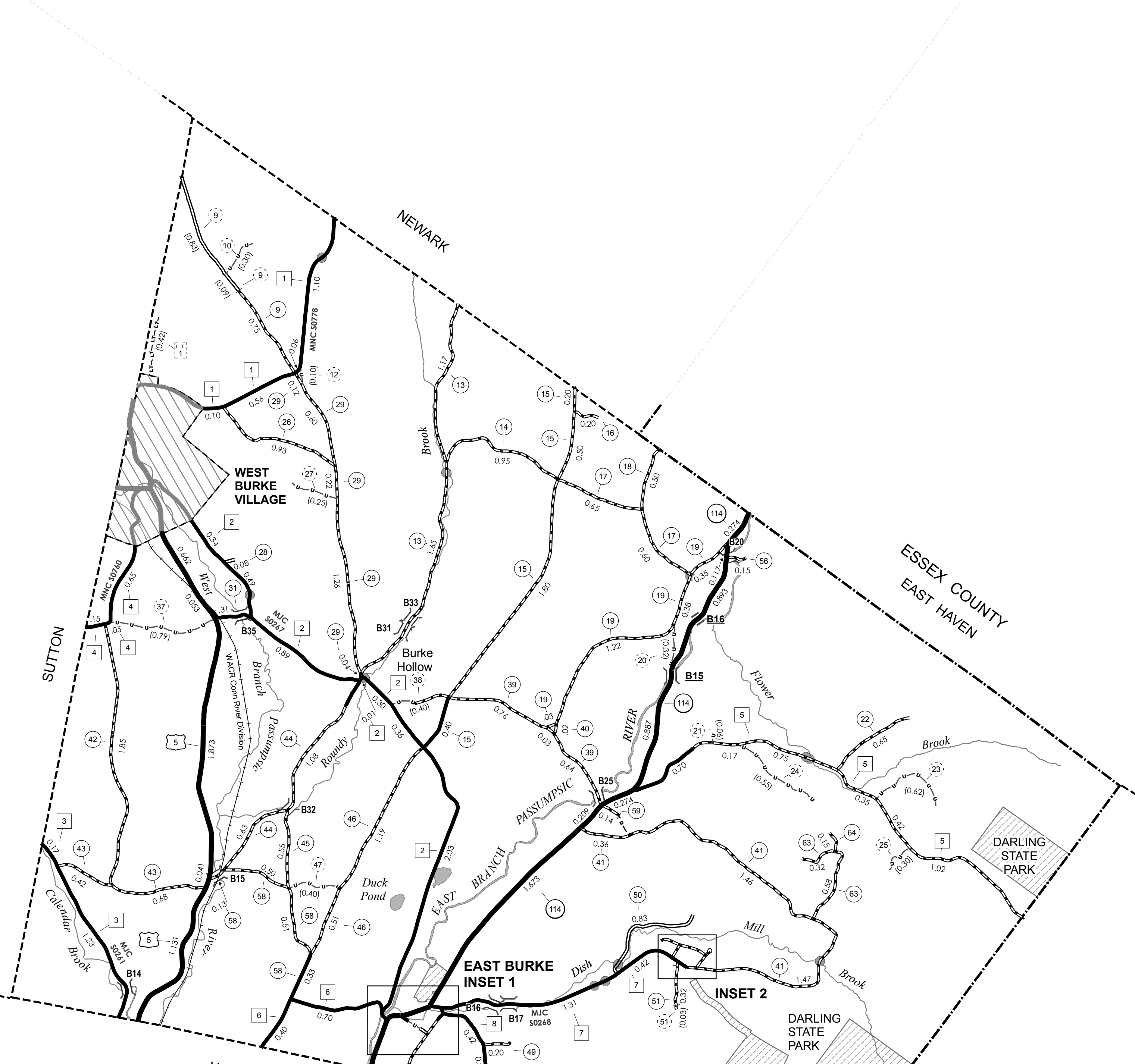
- FAU URBAN ARTERIAL OR COLLECTOR
- MA MINOR ARTERIAL
- MJC MAJOR COLLECTOR
- MNC MINOR COLLECTOR
- PA PRINCIPAL ARTERIAL

B34 / C34 STATE BRIDGE OR CULVERT IDENTIFIER
B34 / C34 TOWN BRIDGE OR CULVERT IDENTIFIER

DISCLAIMER:
The untraveled highways (laid-out town highways), discontinued highways, and legal trails hereon are those of which the Agency of Transportation has record; others may exist.

Highway and bridge data by the Agency of Transportation. Town short structures are drawn from the Vermont Online Bridge & Culvert Inventory Tool (VOBCIT) database. All other data from the Vermont Center for Geographic Information. Only named streams are shown.

Vermont State Plane Coordinate System
North American Datum of 1983
SPCS_Zone_Identifier: 4400
Geodetic Reference System: 80
4,000-meter grid, Easting - Northing



VERMONT GENERAL HIGHWAY MAP
Town of Burke
CALEDONIA COUNTY
Transportation District #7
Prepared by the Vermont Agency of Transportation
Division of Policy, Planning and Intermodal Development
in cooperation with
U.S. Department of Transportation
Federal Highway Administration

Mileage as of February 10, 2015
Map prepared June 18, 2015
SCALE 1:31,680

0.5 0 0.5 1 1.5 2
Miles
0.5 0 0.5 1 1.5 2
Kilometers