

TOWN HWY. No.	LENGTH IN MILES CLASS 3	LENGTH IN MILES CLASS 4	TOWN HWY. No.	LENGTH IN MILES CLASS 3	LENGTH IN MILES CLASS 4
9	0.75	(0.92)	37		(0.79)
10		(0.30)	38		(0.40)
12		(0.10)	39	1.43	
13	2.82		40	0.02	
14	0.95		41	3.38	
15	2.90		42	1.85	
16	0.20		43	1.10	
17	1.25		44	1.71	
18	0.50		45	0.55	
19	1.98		46	1.70	
20		(0.32)	47		(0.40)
21		(0.06)	48	0.52	
22	0.65		49	0.20	
23		(0.62)	50	0.83	
24		(0.55)	51	0.35	(0.03)
25		(0.30)	52	0.07	(0.17)
26	0.93		53	0.05	
27		(0.25)	54	0.03	(0.12)
28	0.08		56	0.15	
29	2.24		57		(0.03)
30	0.07		58	1.47	
31	0.31		59	0.14	
32	0.43		60	0.15	
33	0.10		61	0.35	
34	0.20		62	0.09	
35	0.13		63	0.90	
36	0.16		64	0.15	
<b>TOTAL</b>			<b>33.84</b>	<b>5.36</b>	

**MILEAGE SUMMARY**

CLASS 2		
TH-1	2,380	
TH-2	4,950	
TH-3	1,400	
TH-4	1,240	
TH-5	3,410	
TH-6	1,100	
TH-7	1,950	
TH-8	1,030	
<b>TOTAL CLASS 2</b>	<b>17,460</b>	
CLASS 3		
<b>TOTAL CLASS 3</b>	<b>33.84</b>	
<b>TOTAL TOWN</b>	<b>51,300</b>	
STATE HIGHWAY		
VT-5A	0.657	
VT-114	5.013	
<b>TOTAL STATE HIGHWAY</b>	<b>5,670</b>	
US HIGHWAY		
US-5	4,320	
<b>TOTAL US HIGHWAY</b>	<b>4,320</b>	
<b>TOTAL STATE</b>	<b>9,990</b>	

**TOTAL, TRAVELED HIGHWAYS, FEB. 10, 2014: 61,290**  
 (Excludes Class 4, Legal Trail, and Unidentified Corridor Mileage)

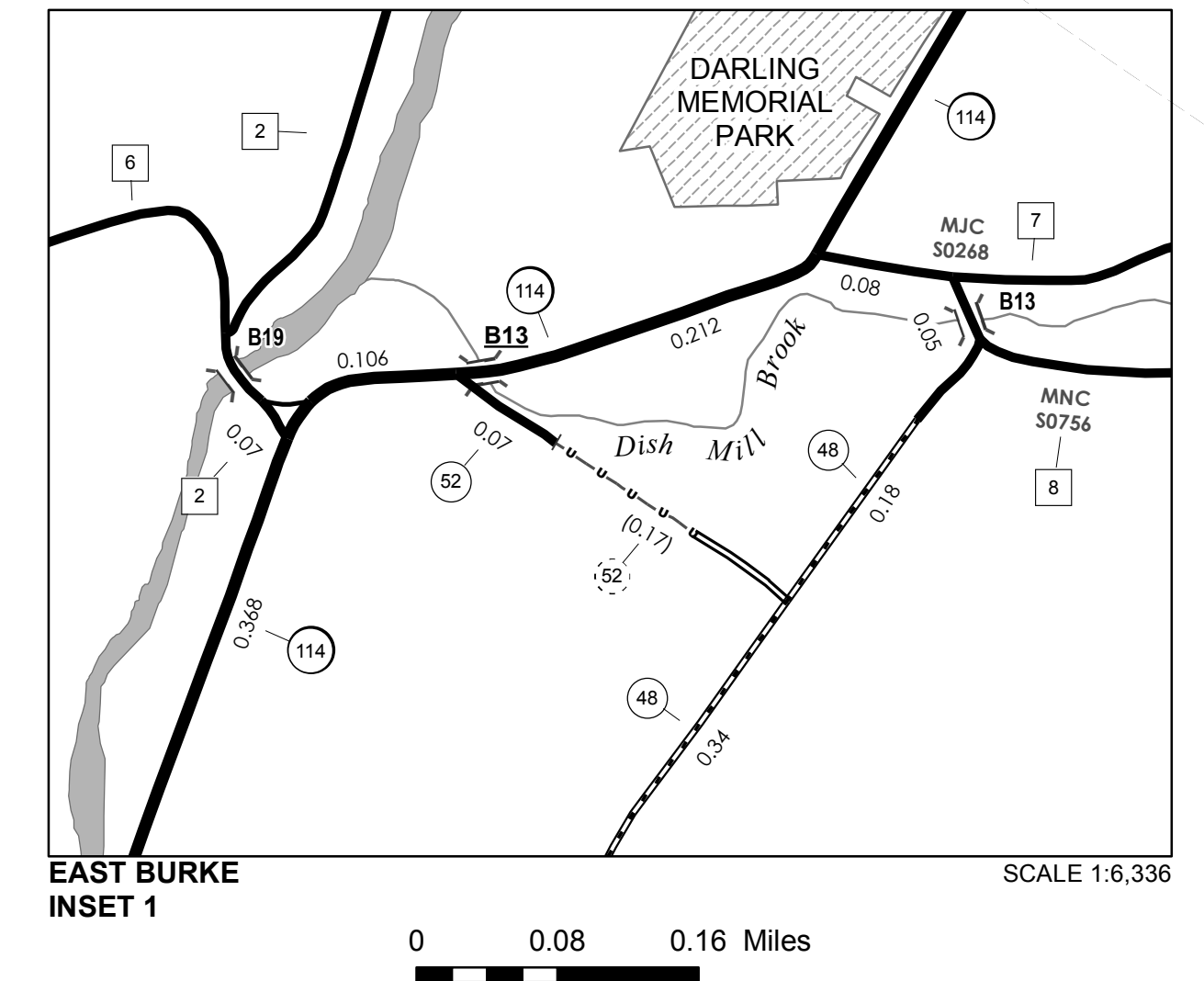
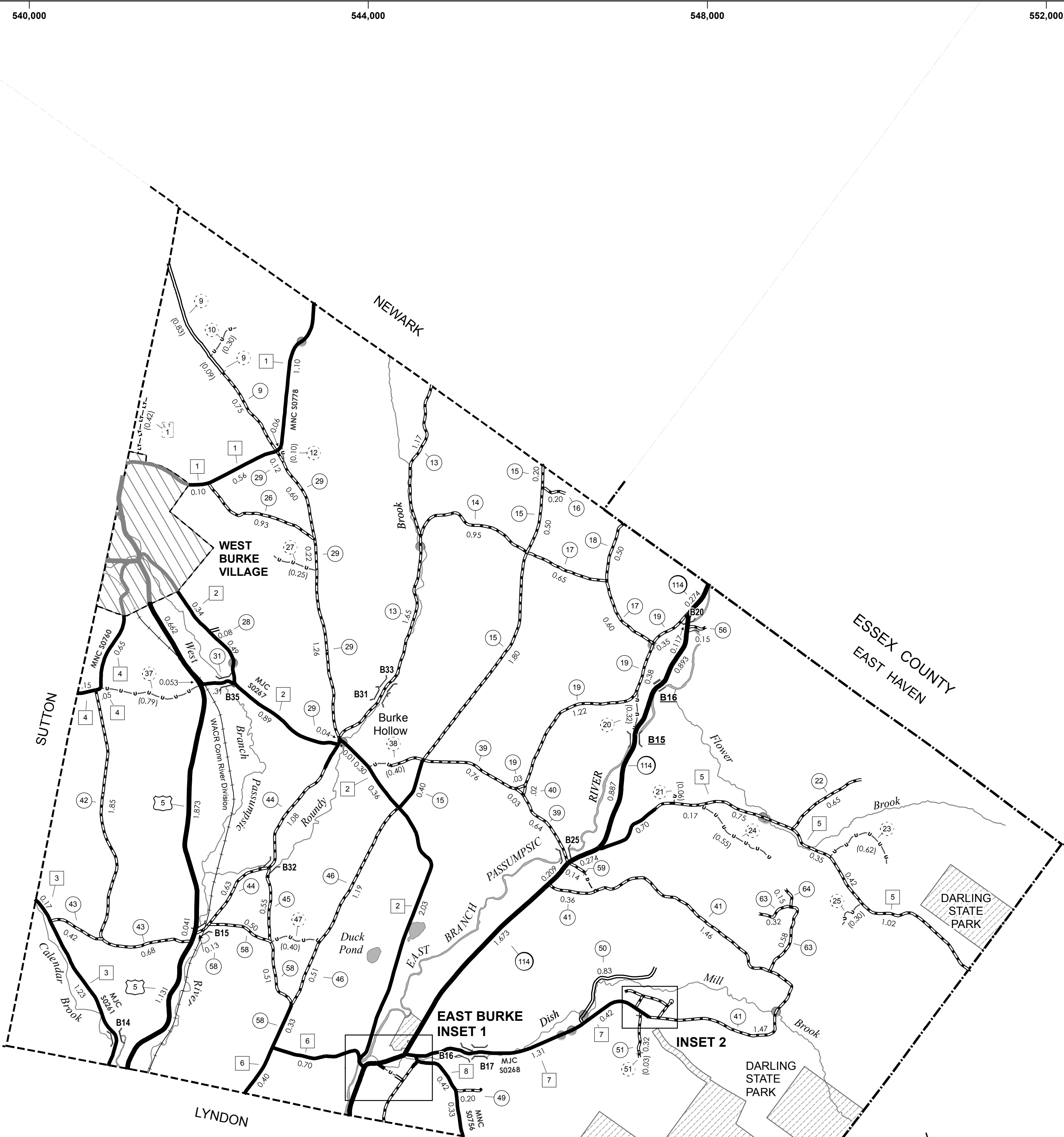
LEGAL TRAIL No.	LENGTH IN MILES LEGAL TRAIL
1	(0.50)
<b>TOTAL</b>	<b>0.50</b>

- HIGHWAYS**
- INTERSTATE OR DIVIDED HIGHWAY
  - STATE - HARD SURFACE OR PAVED
  - TOWN - HARD SURFACE OR PAVED
  - GRAVEL
  - SOIL OR GRADED AND DRAINED EARTH
  - UNIMPROVED OR PRIMITIVE
  - IMPASSABLE OR UNTRAVELED
  - LEGAL TRAIL
  - DISCONTINUED
  - HIGHWAY CLASS CHANGE
  - RAILROAD
  - INACTIVE RAILROAD
  - NATIONAL FOREST ROAD
  - STATE FOREST HIGHWAY
  - PARK AND RIDE
- PUBLIC LAND - GREEN MOUNTAIN NATIONAL FOREST**
- PUBLIC LAND - STATE/MUNICIPAL**
- POLITICAL SUBDIVISIONS**
- STATE BOUNDARY
  - COUNTY BOUNDARY
  - TOWN BOUNDARY
  - VILLAGE BOUNDARY
  - URBAN COMPACT BOUNDARY
- BRIDGE OR CULVERT**
- BRIDGE OR CULVERT > 20'
  - BRIDGE OR CULVERT 6' - 20'
  - VOBCIT BRIDGE
  - VOBCIT CULVERT > 6'
- FEDERAL CLASSIFICATION IDENTIFIER**
- FAU URBAN ARTERIAL OR COLLECTOR
  - MA MINOR ARTERIAL
  - MJC MAJOR COLLECTOR
  - MNC MINOR COLLECTOR
  - PA PRINCIPAL ARTERIAL
- B34 / C34 STATE BRIDGE OR CULVERT IDENTIFIER**
- B34 / C34 TOWN BRIDGE OR CULVERT IDENTIFIER**

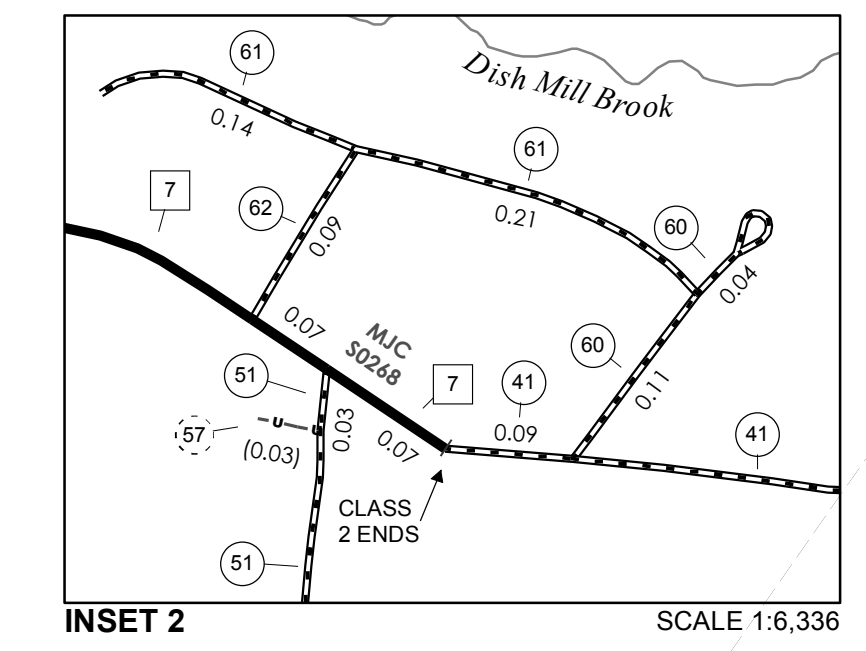
**DISCLAIMER:**  
 The untraveled highways (laid-out town highways), discontinued highways, and legal trails hereon are those of which the Agency of Transportation has record; others may exist.

Highway and bridge data by the Agency of Transportation. Town short structures are drawn from the Vermont Online Bridge & Culvert Inventory Tool (VOBCIT) database. All other data from the Vermont Center for Geographic Information. Only named streams are shown.

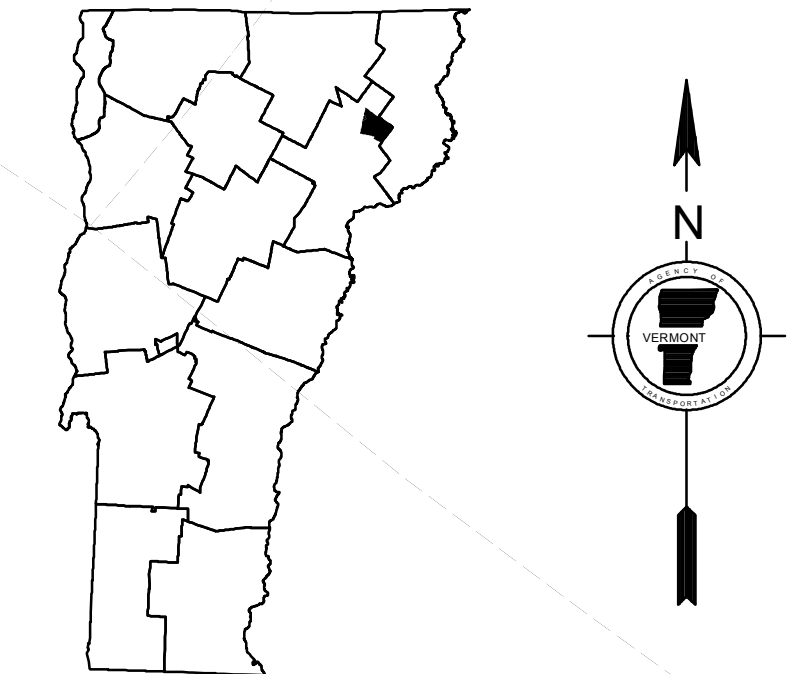
Vermont State Plane Coordinate System  
 North American Datum of 1983  
 SPCS\_Zone\_Identifier: 4400  
 Geodetic Reference System 80  
 4,000-meter grid, Easting - Northing



0 0.08 0.16 Miles



0 0.08 0.16 Miles



**VERMONT**  
**GENERAL HIGHWAY MAP**  
**Town of Burke**  
 CALEDONIA COUNTY  
 Transportation District #7  
 Prepared by the  
 Vermont Agency of Transportation  
 Division of Policy, Planning and Intermodal Development  
 in cooperation with  
 U.S. Department of Transportation  
 Federal Highway Administration

Mileage as of February 10, 2014  
 Map prepared October 02, 2014  
 SCALE 1:31,680

0.5 0 0.5 1 1.5 2  
 Miles  
 0.5 0 0.5 1 1.5 2  
 Kilometers