

TOWN HWY. No.	LENGTH IN MILES CLASS 3	LENGTH IN MILES CLASS 4	TOWN HWY. No.	LENGTH IN MILES CLASS 3	LENGTH IN MILES CLASS 4	TOWN HWY. No.	LENGTH IN MILES CLASS 3	LENGTH IN MILES CLASS 4
7	3.55		35	0.88		66	0.51	
8	1.27		36	0.19		67	1.88	
9	7.05		37	0.13		68	0.38	
10	1.55		38	0.73		71	0.43	
11	0.27		39	0.69		72	0.40	
12	0.54		40	0.75		73	0.10	
13	0.17		41	0.57		74	0.36	
14	0.35		42	1.35		76	0.14	
15	0.50		43	1.61		77	0.25	
16	0.34		44	0.85		78		(0.26)
17	0.23	(0.22)	45	1.05		81	0.55	
18	1.31		46	0.30		82	0.06	
19	0.08		47	0.51		83	0.08	
20	1.60		48	0.13		86	0.14	
21	0.25		49	0.17		87	0.07	
22	0.85		50	0.20		88	0.20	
23	0.04		52	0.28		90	0.15	
24	0.07		53	0.14		91	0.14	
25	0.60		54	2.72		92	0.32	
26	2.08		55	0.13		93	0.20	
27	1.25		56	0.13		94	0.06	
28	0.45		58	0.14		95	0.09	
29	0.71		59	0.13		96	0.48	
30	0.72		60	0.21		97	0.18	
31	0.16		61	0.12		98	0.09	
32	0.13		62	0.07		99	0.24	
33	1.18		63	0.10		100	0.13	
34	0.36		64	0.87		101		(0.95)
TOTAL							50.44	1.43

MILEAGE SUMMARY

CLASS 2		
TH-1	2.010	
TH-2	0.270	
TH-3	2.840	
TH-4	0.470	
TH-5	7.120	
TH-6	2.000	
TH-7	5.280	
TOTAL CLASS 2		19.990
CLASS 3		
TOTAL CLASS 3		50.44
TOTAL TOWN		70.430
STATE HIGHWAY		
VT-7A	6.895	
VT-67	3.590	
TOTAL STATE HIGHWAY		10.485
US HIGHWAY		
US-7	5.364	
TOTAL US HIGHWAY		5.364
TOTAL STATE		15.849

TOTAL, TRAVELED HIGHWAYS, FEB. 10, 2013: 86.279 (Excludes Class 4, Legal Trail, and Unidentified Corridor Mileage)

TOWN HWY. No.	LENGTH IN MILES "NOT UP TO STANDARD"	LEGAL TRAIL No.	LENGTH IN MILES LEGAL TRAIL
77	(0.27)	1	(0.80)
TOTAL	0.27		0.80

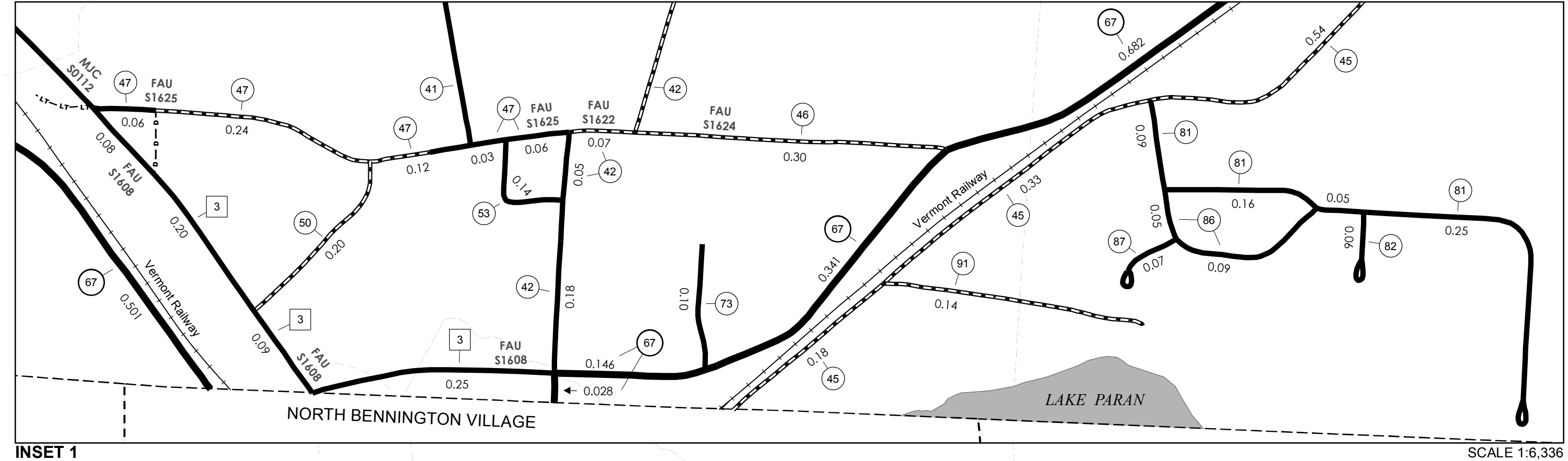
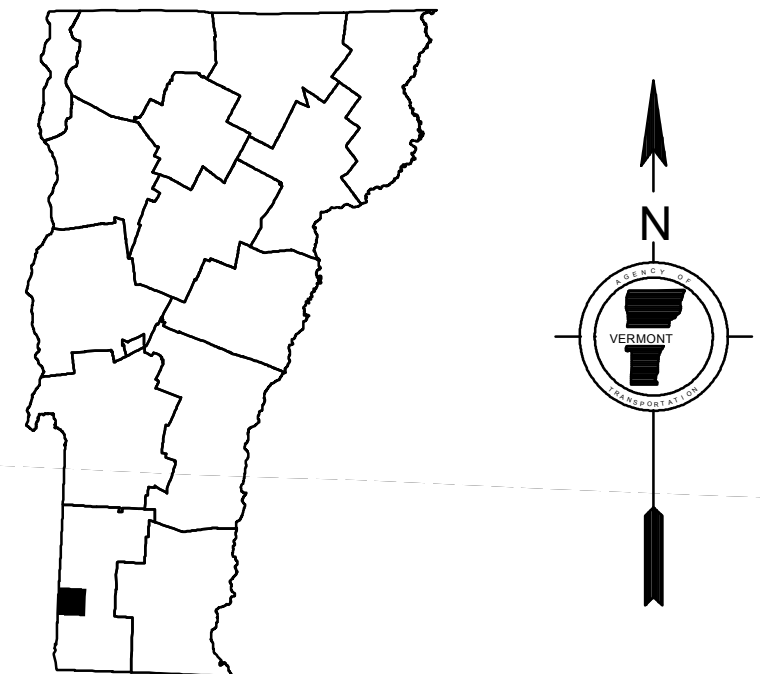
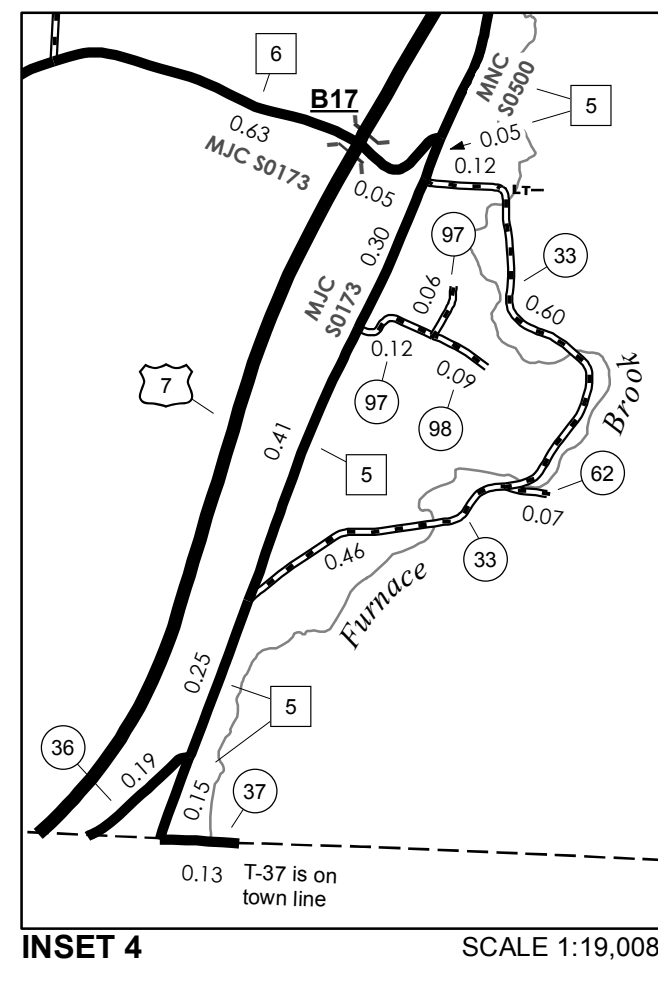
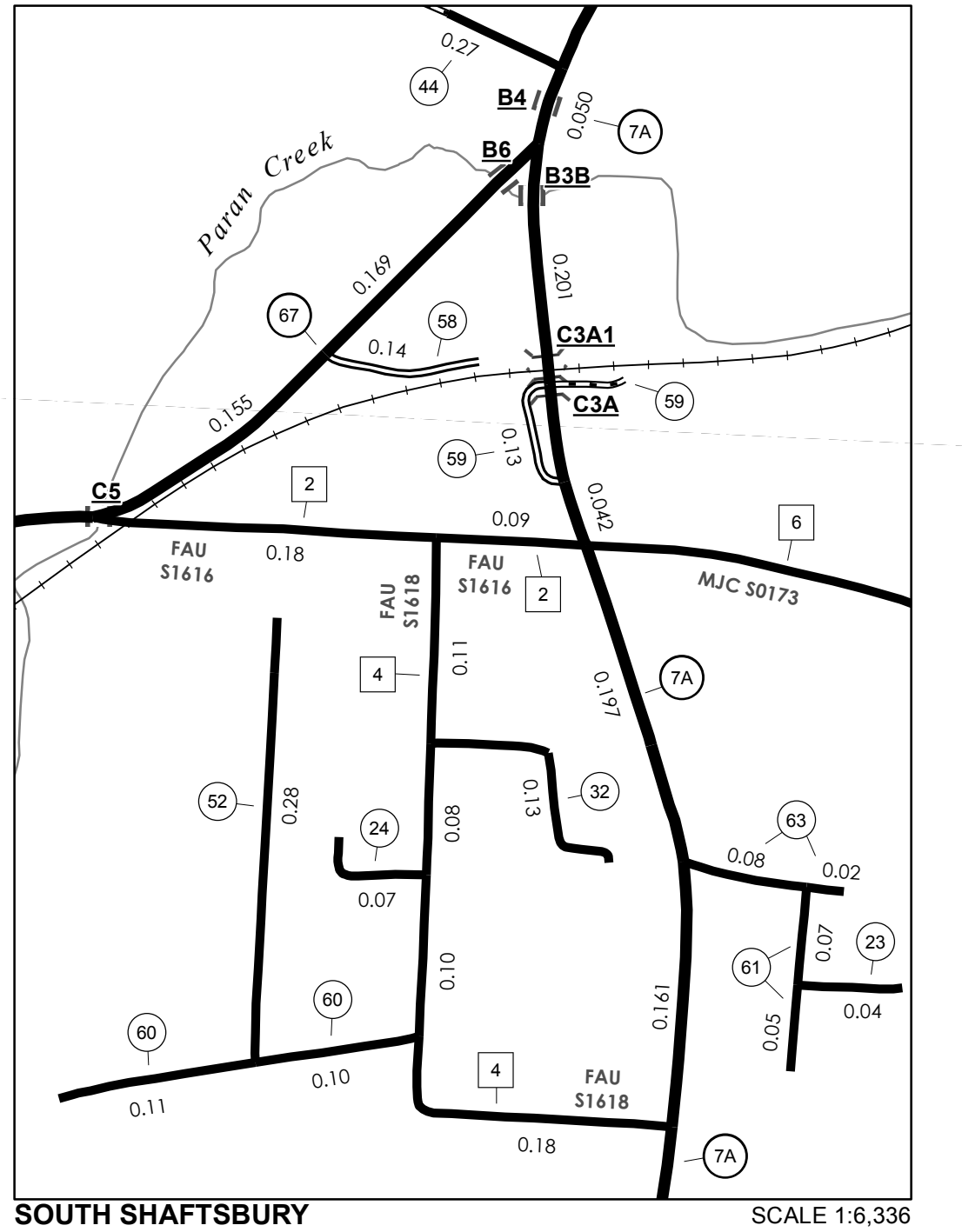
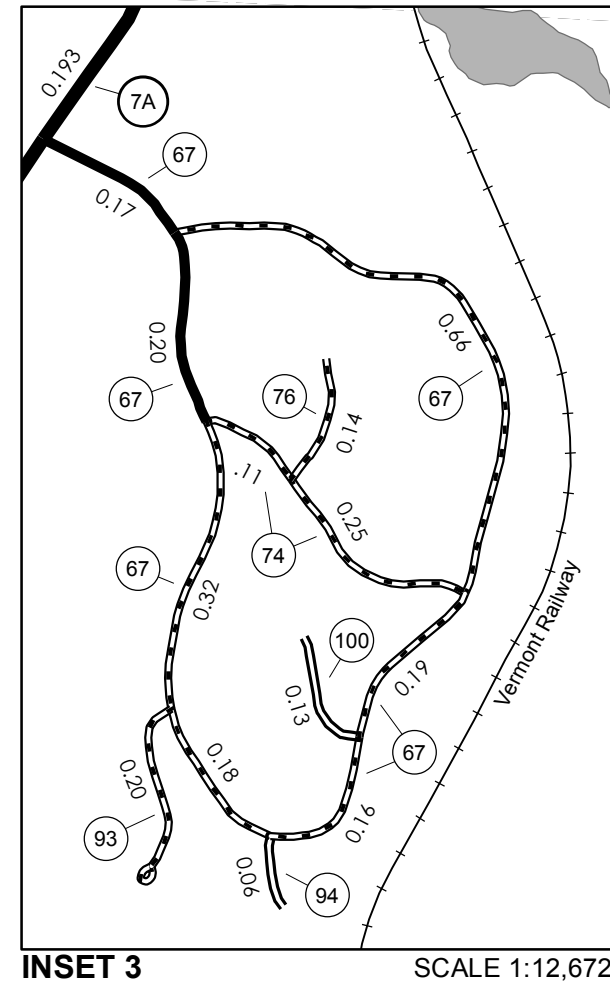
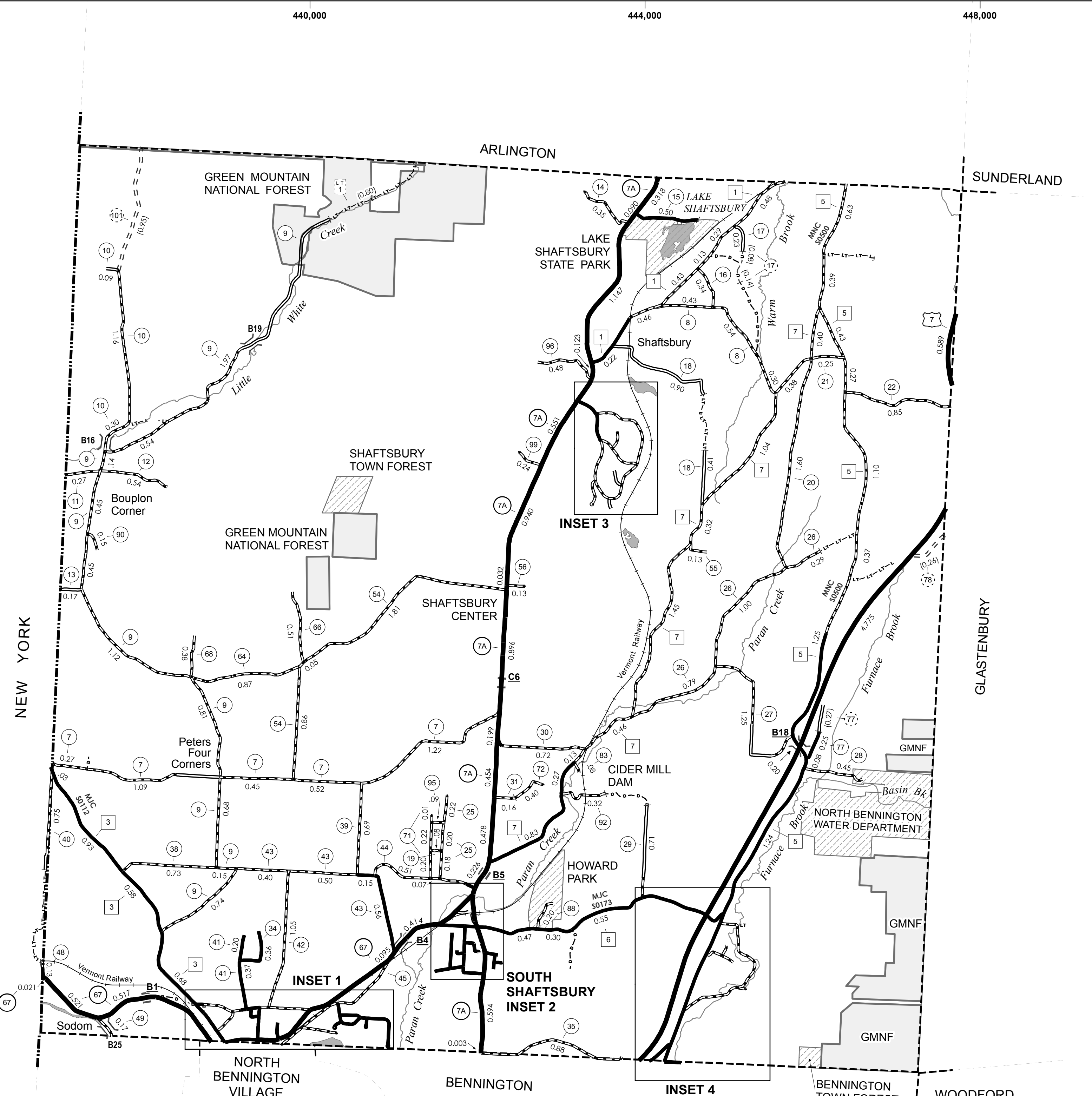
* The sections of the town highways listed above are legally Class 3, but have been deemed "Not Up To Standard" and are functionally Class 4 Town Highways

Vermont State Plane Coordinate System North American Datum of 1983 SPCS_Zone_Identifier: 4400 Geodetic Reference System 80 4,000-meter grid, Easting - Northing

DISCLAIMER: The untraveled highways (laid-out town highways), discontinued highways, and legal trails hereon are those of which the Agency of Transportation has record; others may exist.

Highway and bridge data by the Agency of Transportation. All other data from the Vermont Center for Geographic Information. Only named streams are shown.

HIGHWAYS	LEGEND	PUBLIC LAND - GREEN MOUNTAIN NATIONAL FOREST	PUBLIC LAND - STATE/MUNICIPAL
INTERSTATE	INTERSTATE OR DIVIDED HIGHWAY	[Symbol]	[Symbol]
U.S. ROUTE	STATE - HARD SURFACE OR PAVED		
STATE ROUTE	TOWN - HARD SURFACE OR PAVED		
CLASS 1	GRAVEL		
CLASS 2	SOIL OR GRADED AND DRAINED EARTH		
CLASS 3	UNIMPROVED OR PRIMITIVE		
CLASS 4	IMPASSABLE OR UNTRAVELED		
LEGAL TRAIL	LEGAL TRAIL		
	DISCONTINUED		
	HIGHWAY CLASS CHANGE		
	RAILROAD		
	INACTIVE RAILROAD		
	NFR NATIONAL FOREST ROAD		
	SFH STATE FOREST HIGHWAY		
	P PARK AND RIDE		
	BRIDGE OR CULVERT		
	STATE BRIDGE OR CULVERT IDENTIFIER		
	TOWN BRIDGE OR CULVERT IDENTIFIER		
	FEDERAL CLASSIFICATION IDENTIFIER		
	FAU URBAN ARTERIAL OR COLLECTOR		
	MA MINOR ARTERIAL		
	MJC MAJOR COLLECTOR		
	MNC MINOR COLLECTOR		
	PA PRINCIPAL ARTERIAL		



VERMONT GENERAL HIGHWAY MAP
Town of Shaftsbury
 BENNINGTON COUNTY
 Transportation District #1
 Prepared by the Vermont Agency of Transportation
 Division of Policy, Planning and Intermodal Development
 in cooperation with
 U.S. Department of Transportation
 Federal Highway Administration
 Mileage as of February 10, 2013
 Map prepared October 15, 2013
 SCALE 1:31,680

0.5 0 0.5 1 1.5 2 Miles
 0.5 0 0.5 1 1.5 2 Kilometers