

TOWN HWY. No.	LENGTH IN MILES CLASS 3	LENGTH IN MILES CLASS 4	TOWN HWY. No.	LENGTH IN MILES CLASS 3	LENGTH IN MILES CLASS 4
8	0.50		45	0.12	
9	0.22		46	0.18	
10	0.35	(0.06)	48	0.61	
11	1.80		49	0.29	
12	0.79		51	0.16	
13		(2.85)	52	0.47	
14	0.34		53	0.38	
15	0.32		54	0.25	
16	0.04	(0.86)	55	1.16	
18	0.45		56	0.45	
19	0.69		57	0.33	
20	1.04		58	0.11	
21	1.18		60	0.07	
22	0.58		61	0.22	
23	0.09		62	0.16	
24	0.38		63	0.30	
25	0.14		64	0.42	
26	0.60	(1.87)	65	0.16	
28	0.23		66	0.10	
29	0.11		67	0.28	
31	0.54		68	0.23	
32	0.34		69	0.09	
33	0.15		70	0.09	
34		(0.12)	72	0.72	
35	0.62		75	0.21	
36	0.79		76	0.17	
37	0.52	(1.00)	77	0.50	
38	0.13		78	0.37	
40	0.04		79	0.36	
41	0.19		80	0.16	
42	0.20		81	0.21	
43	0.19		82	0.27	
44	0.11		83	0.10	
<b>TOTAL</b>			<b>TOTAL</b>	<b>23.37</b>	<b>6.76</b>

TOWN HWY. No.	LENGTH IN MILES "NOT UP TO STANDARD"
13	(0.50)
39	(0.15)
<b>TOTAL</b>	<b>0.65</b>

\* The sections of the town highways listed above are legally Class 3, but have been deemed "Not Up to Standard" and are functionally Class 4 Town Highways

MILEAGE SUMMARY		
CLASS 1		
TH-1	3.019	
TH-2	0.305	
TH-3	1.259	
<b>TOTAL CLASS 1</b>	<b>4.583</b>	
CLASS 2		
TH-3	2.170	
TH-4	1.980	
TH-5	0.400	
TH-6	3.870	
TH-7	1.750	
TH-8	2.100	
TH-9	0.070	
TH-10	1.520	
TH-11	1.790	
<b>TOTAL CLASS 2</b>	<b>15.650</b>	
<b>TOTAL CLASS 3</b>	<b>23.37</b>	
<b>TOTAL TOWN</b>	<b>43.603</b>	
STATE HIGHWAY		
VT-7A	3.047	
VT-11	1.991	
VT-30	2.480	
<b>TOTAL STATE HIGHWAY</b>	<b>7.518</b>	
US HIGHWAY		
US-7	7.520	
<b>TOTAL US HIGHWAY</b>	<b>7.520</b>	
US HIGHWAY - Ramps		
US-7	1.558	
<b>TOTAL US HIGHWAY - Ramps</b>	<b>1.558</b>	
<b>TOTAL STATE</b>	<b>16.596</b>	

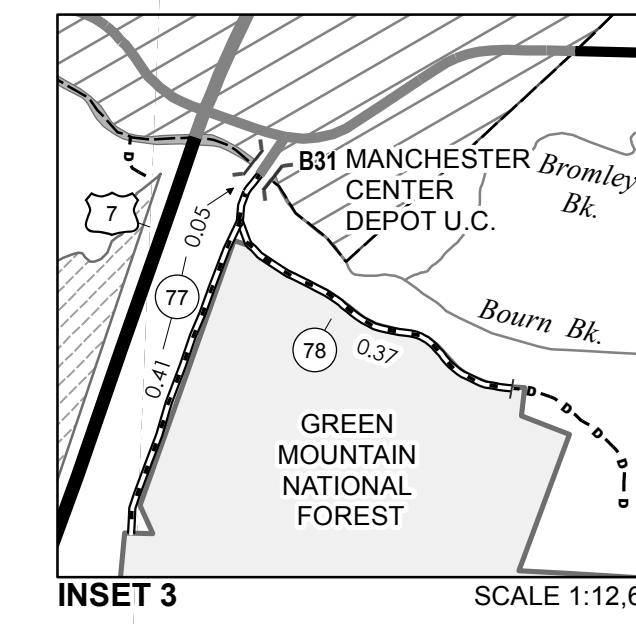
**TOTAL, TRAVELED HIGHWAYS, FEB. 10, 2016: 60.199**  
(Excludes Class 4 and Legal Trail Mileage)

**DISCLAIMER:**  
The untraveled highways (laid-out town highways), discontinued highways, and legal trails hereon are those of which the Agency of Transportation has record; others may exist.

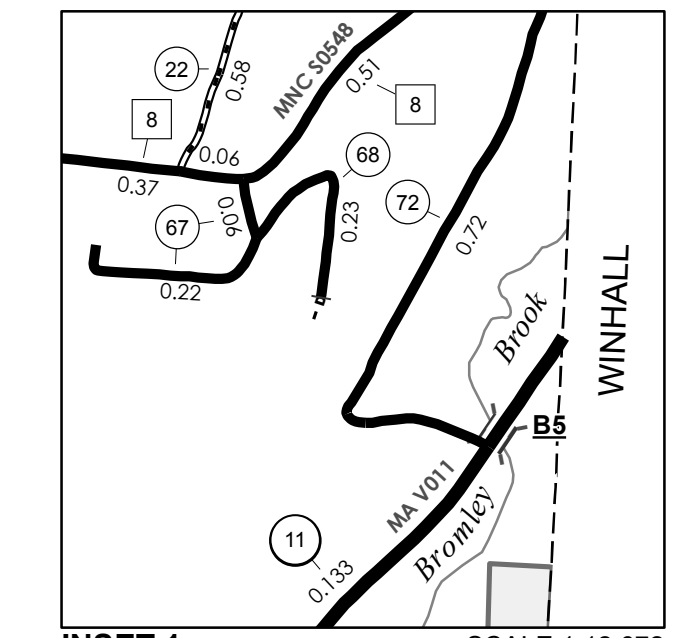
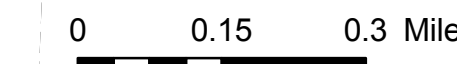
Highway and bridge data by the Agency of Transportation. Town short structures are drawn from the Vermont Online Bridge & Culvert Inventory Tool (VOBCIT) database. All other data from the Vermont Center for Geographic Information. Only named streams are shown.

Vermont State Plane Coordinate System  
North American Datum of 1983  
SPCS\_Zone\_Identifier: 4400  
Geodetic Reference System 80  
4,000-meter grid, Easting - Northing

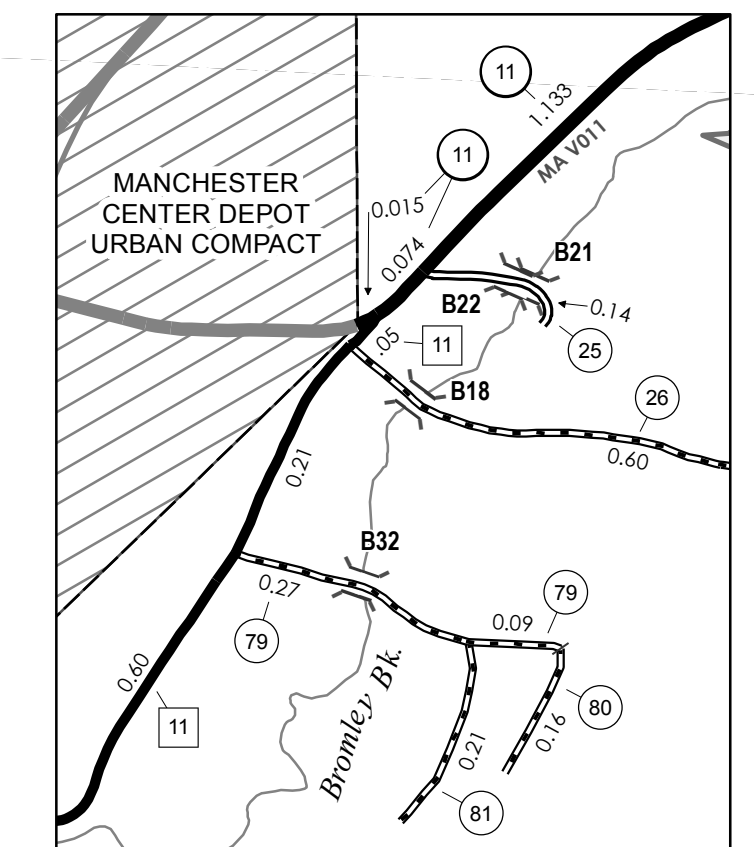
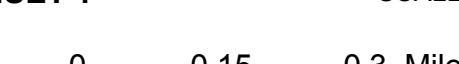
- HIGHWAYS**
- INTERSTATE
- U.S. ROUTE
- STATE ROUTE
- CLASS 1
- CLASS 2
- CLASS 3
- CLASS 4
- LEGAL TRAIL
- INTERSTATE OR DIVIDED HIGHWAY
- STATE - HARD SURFACE OR PAVED
- TOWN - HARD SURFACE OR PAVED
- GRAVEL
- SOIL OR GRADED AND DRAINED EARTH
- UNIMPROVED OR PRIMITIVE
- IMPASSABLE OR UNTRAVELED
- LEGAL TRAIL
- DISCONTINUED
- HIGHWAY CLASS CHANGE
- RAILROAD
- INACTIVE RAILROAD
- NATIONAL FOREST ROAD
- STATE FOREST HIGHWAY
- PARK AND RIDE
- PUBLIC LAND - GREEN MOUNTAIN NATIONAL FOREST
- PUBLIC LAND - STATE/MUNICIPAL
- POLITICAL SUBDIVISIONS**
- STATE BOUNDARY
- COUNTY BOUNDARY
- TOWN BOUNDARY
- VILLAGE BOUNDARY
- URBAN COMPACT BOUNDARY
- WATER BODY
- STREAM OR BROOK
- BRIDGE OR CULVERT**
- BRIDGE OR CULVERT > 20'
- BRIDGE OR CULVERT 6' - 20'
- VOBCIT BRIDGE
- VOBCIT CULVERT > 6'
- STATE BRIDGE OR CULVERT IDENTIFIER
- TOWN BRIDGE OR CULVERT IDENTIFIER
- FEDERAL CLASSIFICATION IDENTIFIER
- FAU URBAN ARTERIAL OR COLLECTOR
- MA MINOR ARTERIAL
- MJC MAJOR COLLECTOR
- MNC MINOR COLLECTOR
- PA PRINCIPAL ARTERIAL



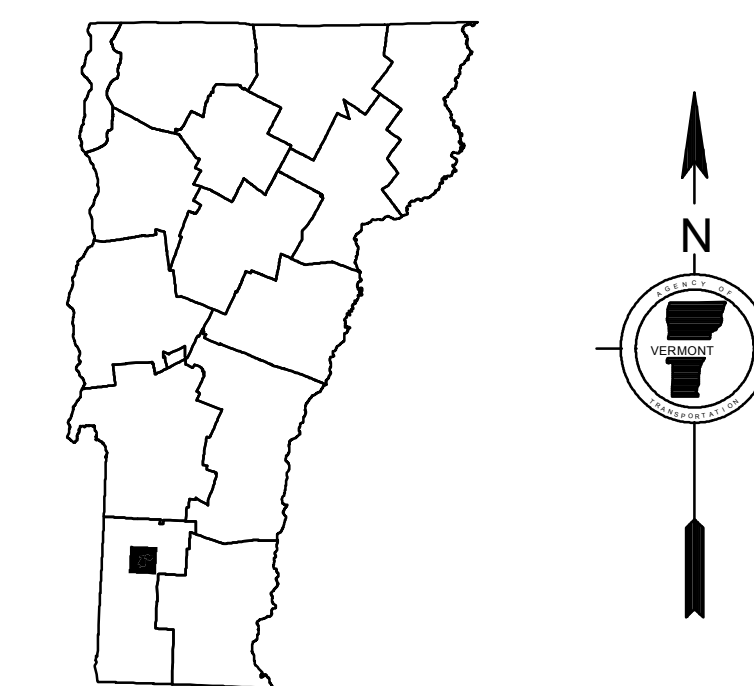
INSET 3 SCALE 1:12,672



INSET 1 SCALE 1:12,672



INSET 2 SCALE 1:12,672



# VERMONT GENERAL HIGHWAY MAP Town of Manchester

BENNINGTON COUNTY

Transportation District #1

Prepared by the  
Vermont Agency of Transportation  
Division of Policy, Planning and Intermodal Development  
in cooperation with  
U.S. Department of Transportation  
Federal Highway Administration

Mileage as of February 10, 2016  
Map prepared July 20, 2016

SCALE 1:31,680

