

TOWN HWY. No.	LENGTH IN MILES CLASS 4	TOWN HWY. No.	LENGTH IN MILES CLASS 3
6	0.17	316	0.08
7	0.34	317	0.19
8	1.78	318	0.26
9	0.63	320	0.54
10	0.77	322	0.12
11	0.50	324	0.13
12	0.36	326	0.27
13	1.36	328	0.16
14	0.35	330	0.46
15	3.18	332	0.26
16	0.95	334	0.05
17	0.88	336	0.11
18	0.88	338	0.85
19	2.60	340	0.44
20	0.57	342	0.48
21	0.12	344	0.37
22	0.10	346	0.09
23	1.33	348	0.19
24	0.86	350	0.14
25	1.59	352	0.28
26	1.40	354	0.04
28	0.36	356	0.27
30	1.19	358	0.11
31	0.05	360	0.39
32	0.31	362	0.10
36	0.23	364	0.07
37	0.11	366	0.18
38	1.55	368	0.21
39	0.29	370	0.05
40	1.37	372	0.05
41	0.15	374	0.37
42	1.50	376	0.05
44	0.10	378	0.08
45	0.40	380	0.10
46	3.29	382	0.01
47	0.98	384	0.13
48	1.34	385	0.07
49	2.37	386	0.09
50	0.09	388	0.13
51	0.95	390	0.08
52	0.60	392	0.11
53	1.15	394	0.12
54	1.62	396	0.17
55	0.40	398	0.16
56	1.20	400	0.19
57	0.16	401	0.08
58	0.75	402	0.04
59	1.08	403	0.14
60	0.29	404	0.02
61	0.20	406	0.19
62	0.41	408	0.34
64	0.41	410	0.20
66	0.43	412	0.31
71	0.75	413	0.11
72	0.03	414	0.13
73	0.05	415	0.03
74	0.29	416	0.44
80	0.26	417	0.08
81	0.27	418	0.17
82	0.05	419	0.29
83	1.31	420	0.05
84	0.35	421	0.16
85	0.15	422	0.48
86	0.32	423	0.17
87	0.22	424	0.13
88	0.95	425	0.10
89	0.38	426	0.37
90	0.32	428	0.07
91	0.28	429	0.03
92	0.10	430	0.55
93	0.22	432	0.17
94	0.29	434	0.51
95	0.20	436	0.37
96	0.23	438	0.41
97	0.51	440	0.08
98	0.14	442	0.15
99	0.05	444	0.41
100	0.63	446	0.15
101	0.13	448	0.04
102	0.70	450	0.07
103	0.26	452	0.05
104	0.22	454	0.06
105	0.40	458	0.07
106	0.15	460	0.11
107	0.50	462	0.11
108	0.48	464	0.11
109	0.21	466	0.07
110	0.19	468	0.06
111	0.10	470	0.09
112	0.12	472	0.20
113	0.28	473	0.20
114	0.26	474	0.14
115	0.42	475	0.07
116	0.11	476	0.66
117	0.09	478	0.10
118	0.20	480	0.17
119	0.30	482	0.10
120	0.89	484	0.05
121	0.12	486	0.33
122	0.26	488	0.27
123	0.04	490	0.35
124	0.13	492	0.29
125	0.08	494	0.27
126	0.14	496	0.06
127	0.37	498	0.42
128	0.03	500	0.14
129	0.03	502	0.25
130	0.07	504	0.38
300	0.10	506	0.07
306	0.19	508	0.09
308	0.27	509	0.08
310	0.40	510	0.14
312	0.08	511	0.05
314	0.06	515	0.05
TOTAL	83.73	TOTAL	3.25

TOWN HWY. No. LENGTH IN MILES "NOT UP TO STANDARD"

18 (0.37)
32 (0.08)
456 (0.05)
TOTAL 0.50

*The sections of the town highways listed above are legally Class 3, but have been deemed "Not Up To Standard" and are functionally Class 4 Town Highways

MILEAGE SUMMARY

CLASS 1	TH-1	1.651
	TH-2	1.933
	TOTAL CLASS 1	3.584
CLASS 2	TH-3	3.187
	TH-4	0.660
	TH-5	3.590
	TH-6	1.120
	TH-7	0.967
	TH-8	1.910
	TH-9	0.960
	TH-10	0.710
	TOTAL CLASS 2	12.204
CLASS 2 - Ramps	TH-7	0.027
	TOTAL CLASS 2 - Ramps	0.027
CLASS 3	TOTAL CLASS 3	83.73
	TOTAL TOWN	99.545

STATE HIGHWAY
VT-7A 3.142
VT-9 4.359
VT-67A 1.943
VT-279 6.054
NSH-BNSH 0.236
TOTAL STATE HIGHWAY 15.734

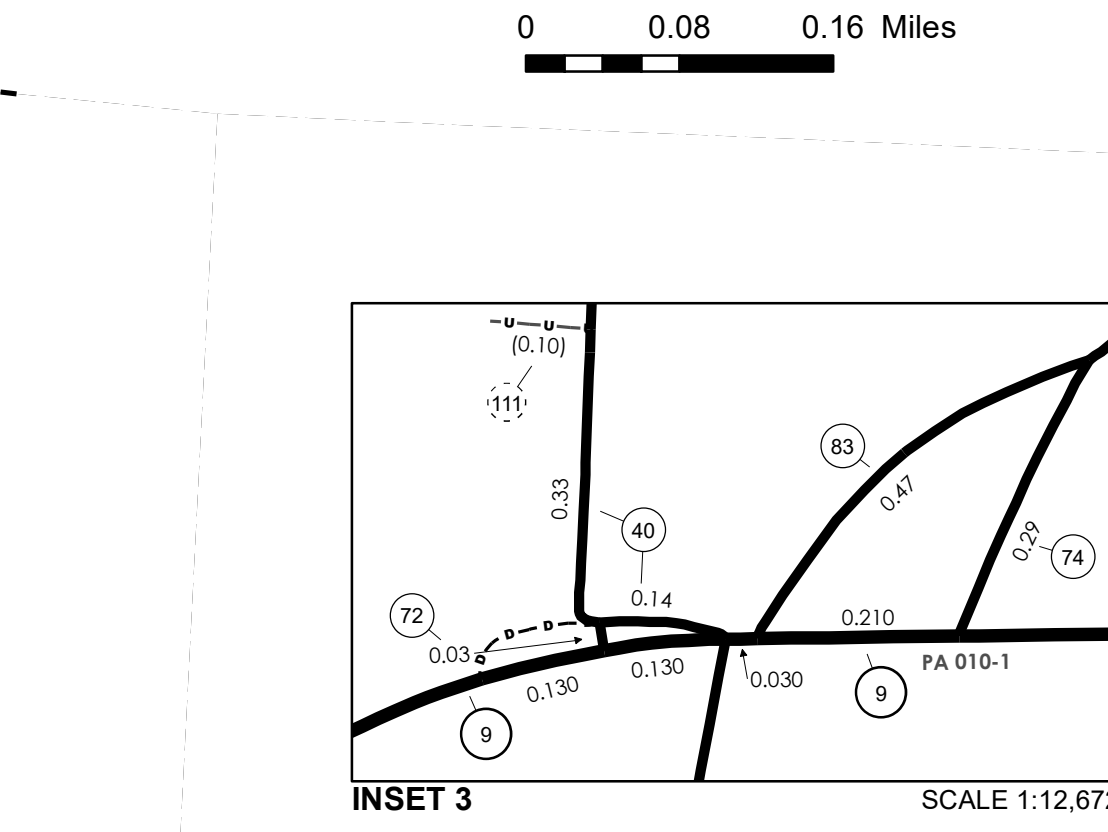
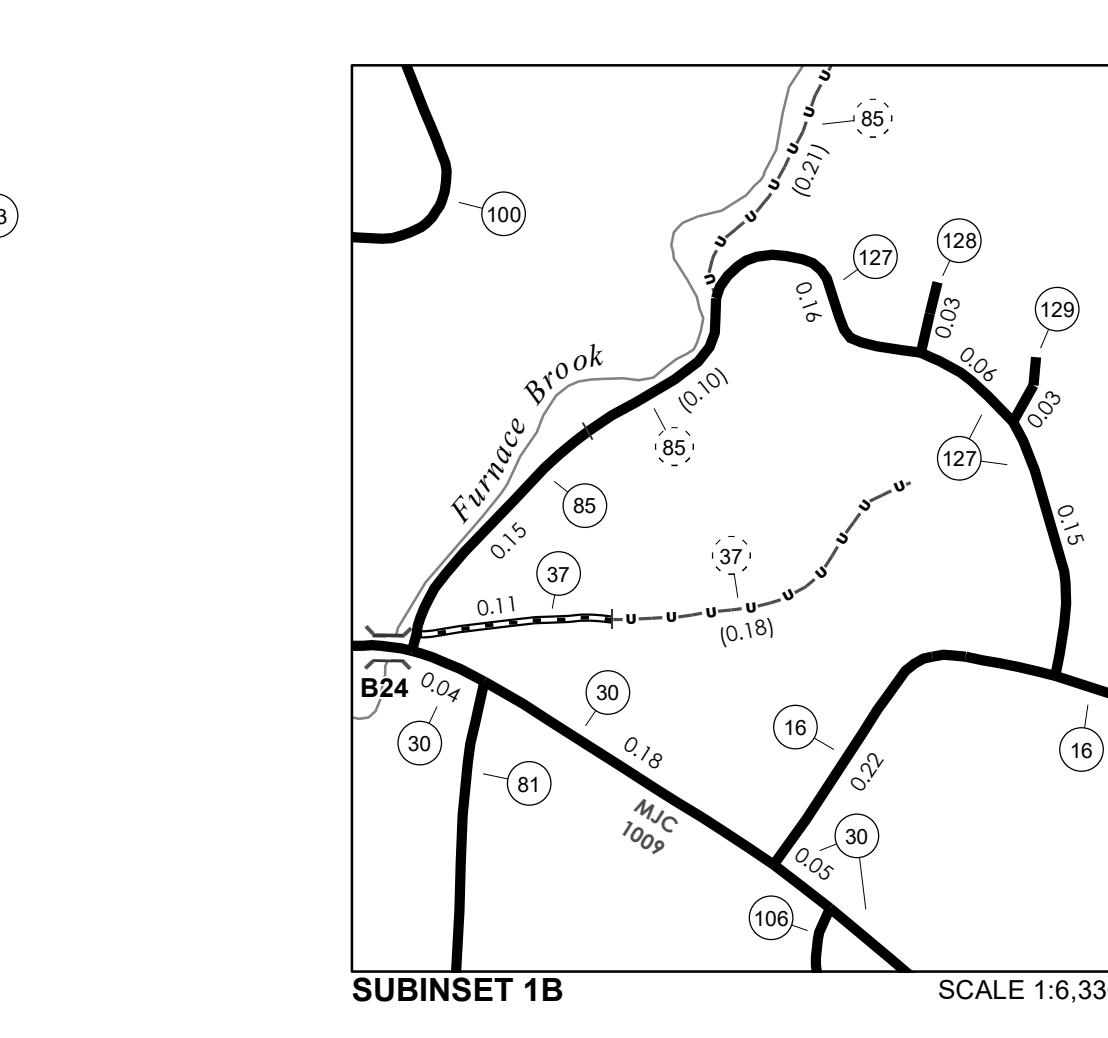
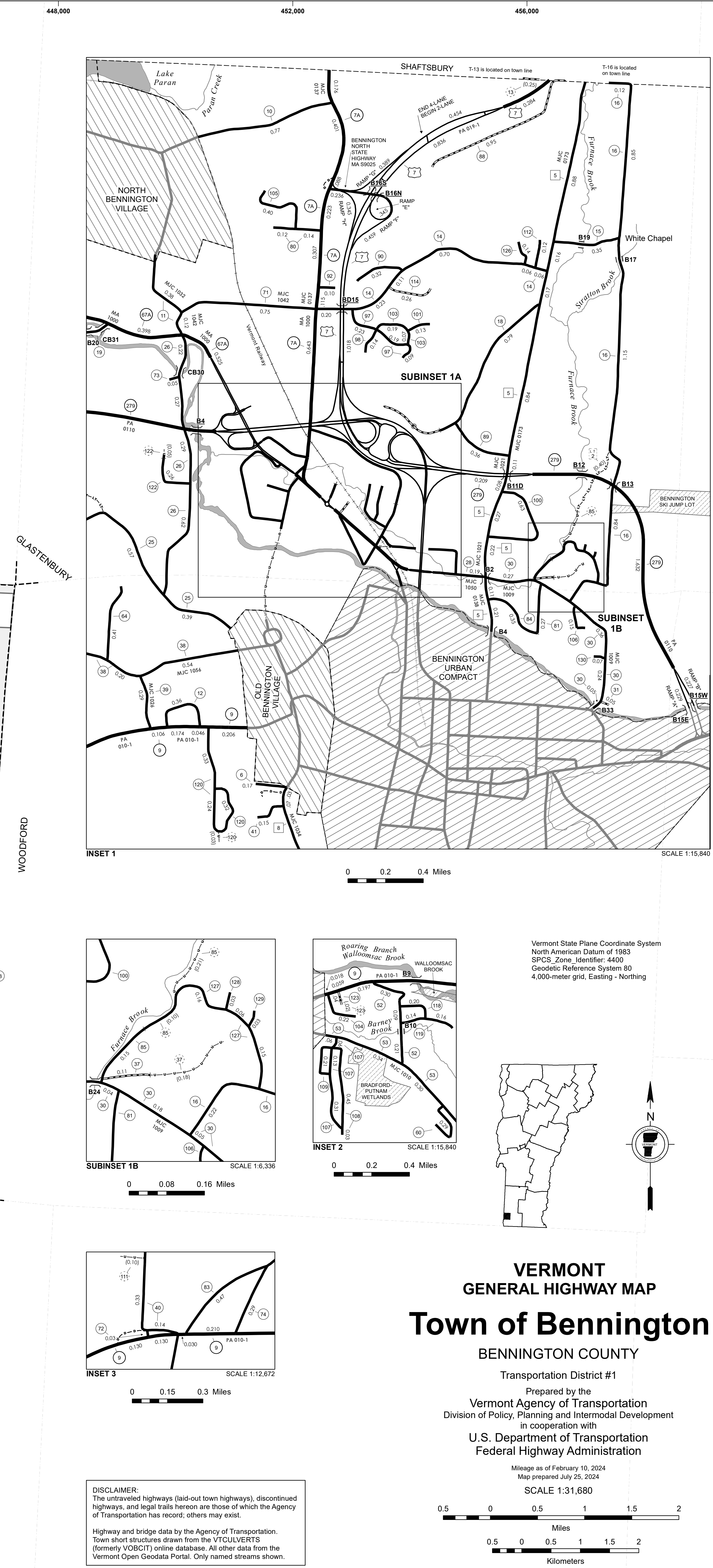
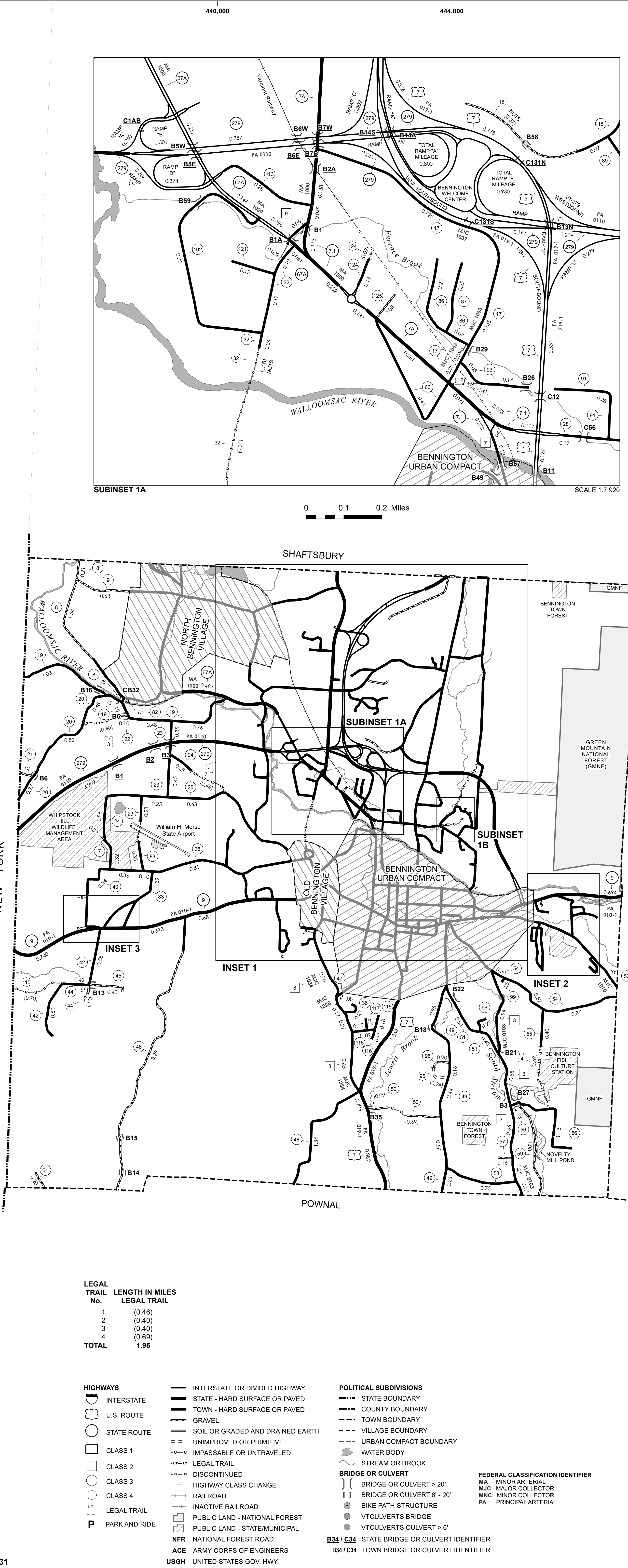
STATE HIGHWAY - Ramps
VT-7A 0.113
VT-279 3.371
TOTAL STATE HIGHWAY - Ramps 3.484

US HIGHWAY
US-7 6.328
TOTAL US HIGHWAY 6.328

US HIGHWAY - Ramps
US-7 2.840
TOTAL US HIGHWAY - Ramps 2.840

TOTAL STATE 28.186

TOTAL TRAVELED HIGHWAYS, FEB. 10, 2024: 127.731
(Excludes Class 4 and Legal Trail Mileage)



Vermont State Plane Coordinate System
North American Datum of 1983
SPCS Zone Identifier: 4400
Geoidic Reference System 80
4,000-meter grid, Easting - Northing

VERMONT GENERAL HIGHWAY MAP

Town of Bennington

BENNINGTON COUNTY
Transportation District #1

Prepared by the
Vermont Agency of Transportation
Division of Policy, Planning and Intermodal Development
in cooperation with
U.S. Department of Transportation
Federal Highway Administration

Mileage as of February 10, 2024
Map prepared July 25, 2024
SCALE 1:31,680

0.5 0 0.5 1 1.5 2 Miles
0.5 0 0.5 1 1.5 2 Kilometers

DISCLAIMER:
The untraveled highways (laid-out town highways), discontinued highways, and legal trails hereon are those of which the Agency of Transportation has record; others may exist.
Highway and bridge data by the Agency of Transportation.
Town short structures drawn from the VT/CULVERTS (formerly VOBCT) online database. All other data from the Vermont Open Geodata Portal. Only named streams shown.