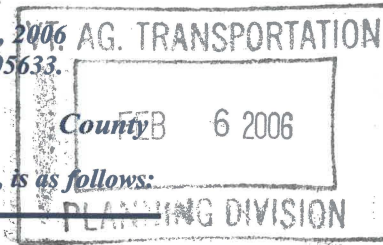


CERTIFICATE OF HIGHWAY MILEAGE

YEAR ENDING FEBRUARY 10, 2006

Fill out form, make and file copy with the Town Clerk, and mail ORIGINAL, before February 20, 2006 to: VT Agency of Transportation, Program Development Division, Drawer 33, Montpelier, VT 05633.



We, the Selectmen or Aldermen or Trustees of STOCKBRIDGE in WINDSOR

on an oath state that the mileage of highways, according to Title 19, V.S.A, Sec #305, added 1985, is as follows:

PART I - CHANGES TOTALS - Please fill in and calculate totals.

Table with 6 columns: Town Highways, Previous Mileage, Added Mileage, Subtracted Mileage, Total, Scenic Highways. Rows include Class 1, Class 1 Lane, Class 2, Class 3, State Highway, Class 4, and Total.

* Class 1 Lane Mileage and Class 4 is NOT included in total.

PART II - INFORMATION AND DESCRIPTION OF CHANGES SHOWN ABOVE.

- 1. NEW HIGHWAYS: Please attach Selectmen's "Certificate of Completion and Opening".
2. DISCONTINUED: Please attach SIGNED copy of proceedings (minutes of meeting).
3. RECLASSIFIED/REMEASURED: Please attach SIGNED copy of proceedings (minutes of meeting).
4. SCENIC HIGHWAYS: Please attach a copy of order designating/discontinuing Scenic Highways.

IF THERE ARE NO CHANGES IN MILEAGE: Check box and sign below. [X]

PART III - SIGNATURES - PLEASE SIGN.

Selectmen/ Aldermen/ Trustees Signatures:

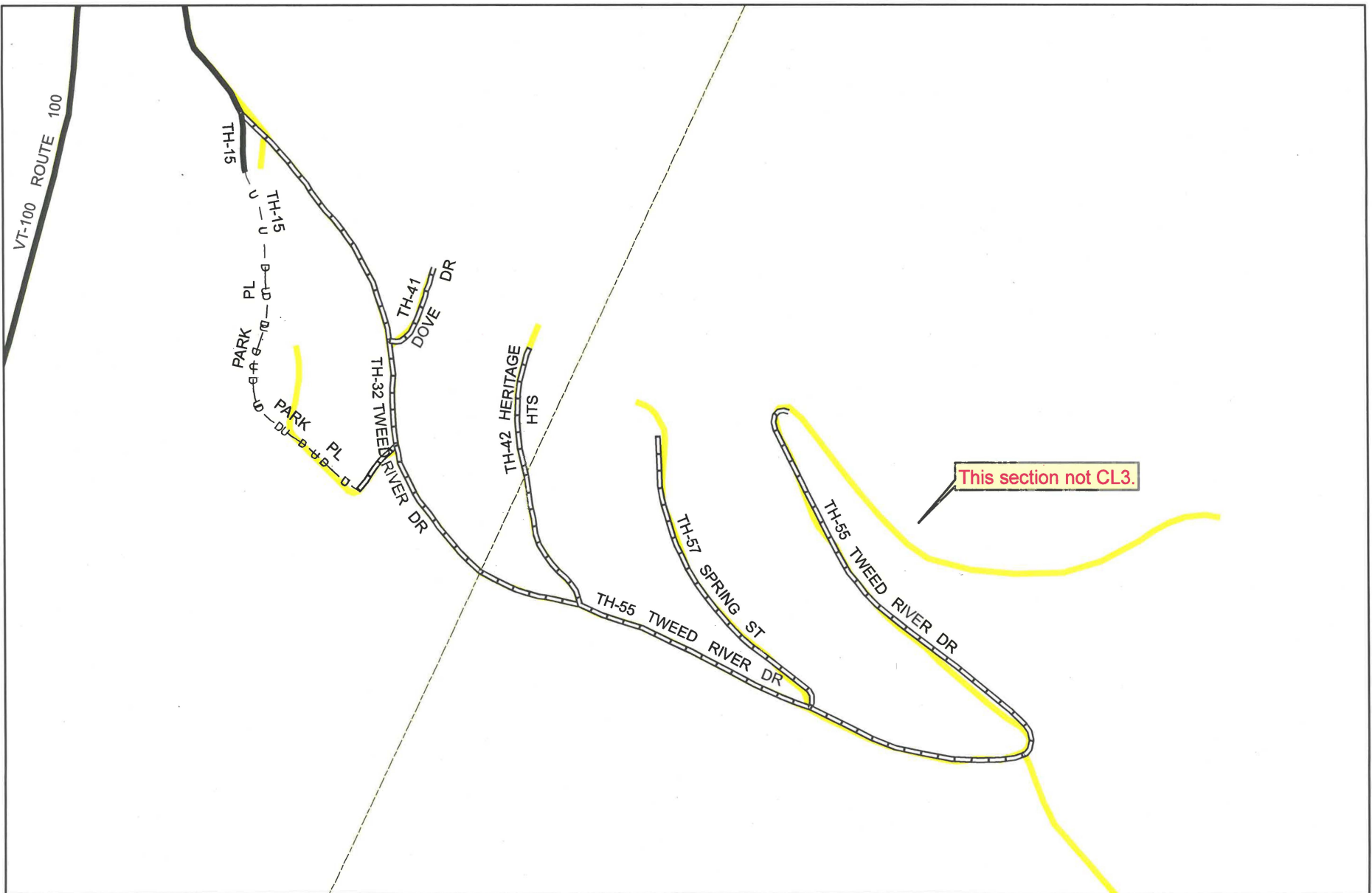
Handwritten signatures of selectmen/aldermen/trustees.

Clerk Signature: Catherine Brown Date Filed: 2/3/06

Please sign ORIGINAL and return it for Transportation signature.

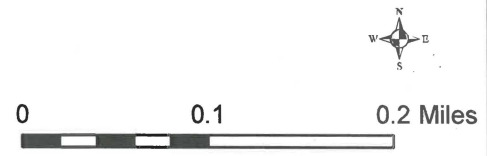
AGENCY OF TRANSPORTATION APPROVAL: Signed copy will be returned to T/C/V Clerk.

APPROVED: Jonathan Croft DATE: 2/11/2006 Representative, Agency of Transportation



Mapping Unit
 Policy & Planning Division
 Vermont Agency of Transportation -- March 2006

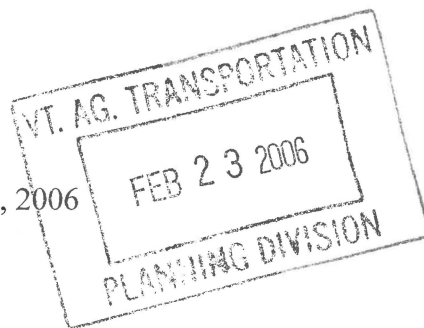
Mileage Certificate Change 2006 -- STOCKBRIDGE



TOWN OF STOCKBRIDGE

P.O. BOX 39
STOCKBRIDGE, VT 05772
(802) 234-9371

February 22, 2006



Ms. Sara Moulton
VT Agency of Transportation
National Life Building
Drawer 33
Montpelier, VT 05633-5001

RE: Change to State Highway Map

Dear Ms. Moulton:

It has been brought to the attention of the Stockbridge Selectboard that there is an error on the State Highway map. Town Highway #55, Tweed River Drive is not correct on the highway map. I have included a copy of the survey of the road and a copy of the map. If you require any further information from us to correct this error please let us know.

Thank you for your assistance with this matter.

Sincerely,

A handwritten signature in blue ink that reads "Mark Pelletier".

Mark Pelletier, Chair
Stockbridge Selectboard

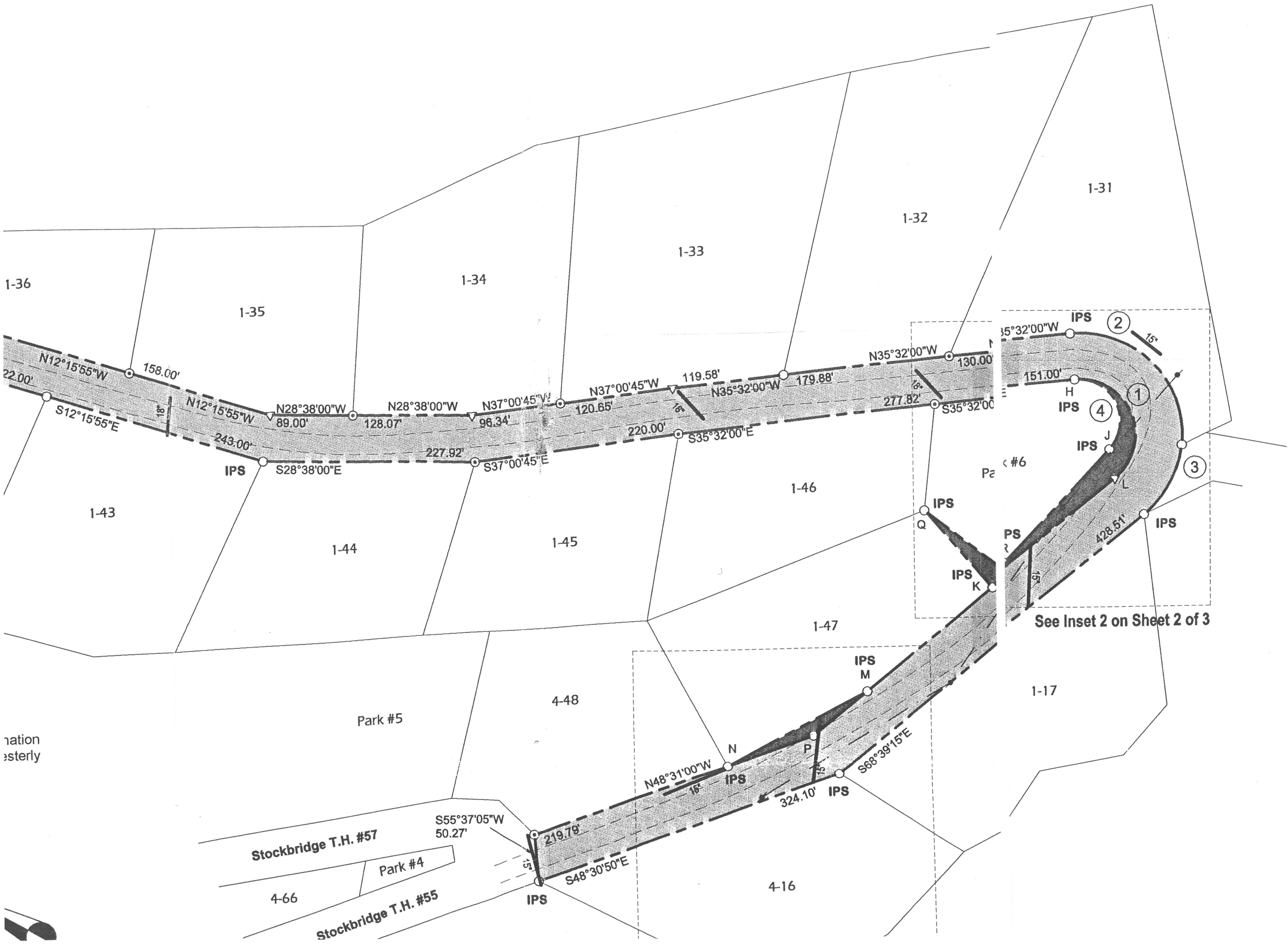
Encls.

Boundary Dimensions

A - B	N65°18'40"E	100.06'
B - C	S12°15'45"E	100.27'
C - D	S65°27'50"W	11.72'
D - E	N27°09'45"W	43.32'
E - F	S62°50'15"W	26.00'
F - G	S12°15'55"E	43.06'
G - D	N65°27'50"E	37.11'
J - K	N77°08'55"W	188.99'
K - L	S68°36'25"E	172.07'
K - M	N68°41'10"W	176.14'
M - N	N57°15'25"W	170.18'
N - P	S48°31'00"E	97.80'
P - M	S68°41'10"E	75.00'
K - Q	N19°50'40"E	111.46'
Q - R	S08°02'45"W	111.02'
R - K	N77°08'55"W	22.87'

Curve Data

①	R = 60.00' L = 153.81' Chord: S37°54'25"W 115.02'
②	R = 110.00' L = 194.98' Chord: N15°14'50"E 170.44'
③	R = 110.00' L = 87.01' Chord: N88°41'10"E 84.76'
④	R = 45.00' L = 108.69' Chord: S33°39'35"W 84.13'



See Inset 2 on Sheet 2 of 3

ation
sterly

Stockbridge T.H. #57

Park #4

Stockbridge T.H. #55

